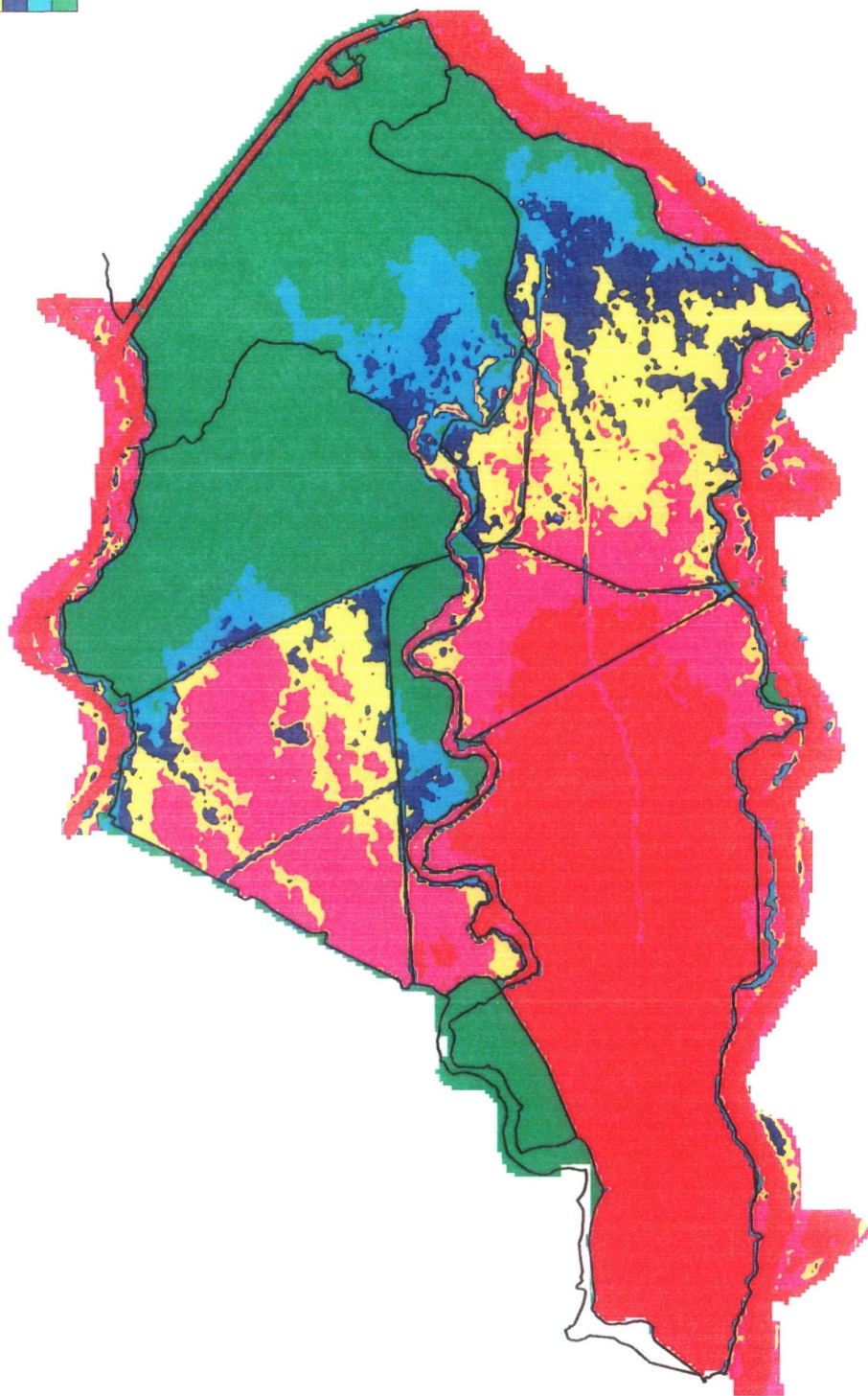


above  
2.50  
1.50  
1.00  
0.50  
0.01  
below



→ X [km]

Y [km]

DELFT HYDRAULICS

Dijkdoorbraak Heesselt

22.04.97

T = 96 hr.

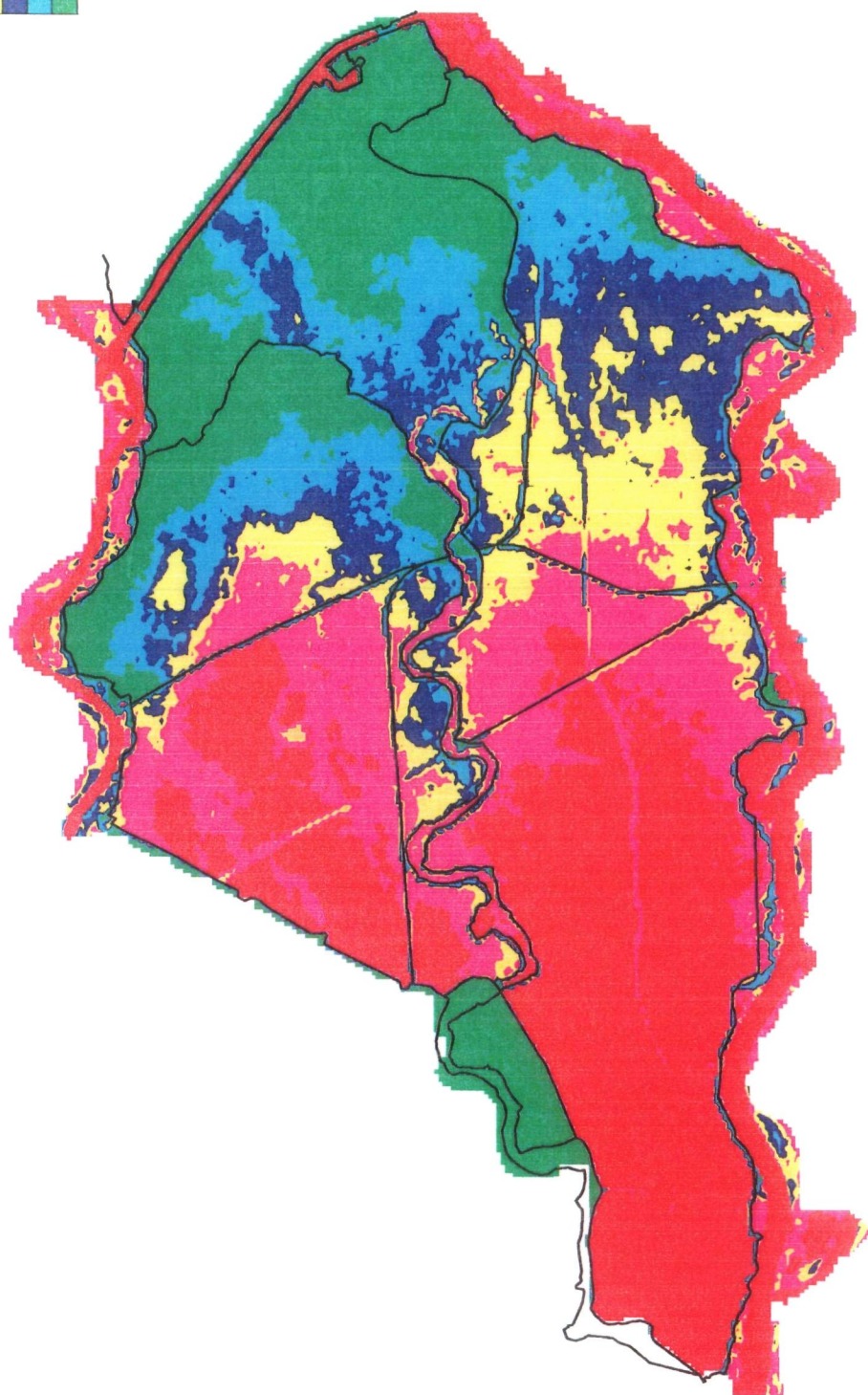
OPC = TH6

DELFT HYDRAULICS

Z993

Fig. 4.3.8

above  
2.50  
1.50  
1.00  
0.50  
0.01  
below



DELFT HYDRAULICS

Dijkdoorbraak Heesselt

22.04.97

T =120 hr.

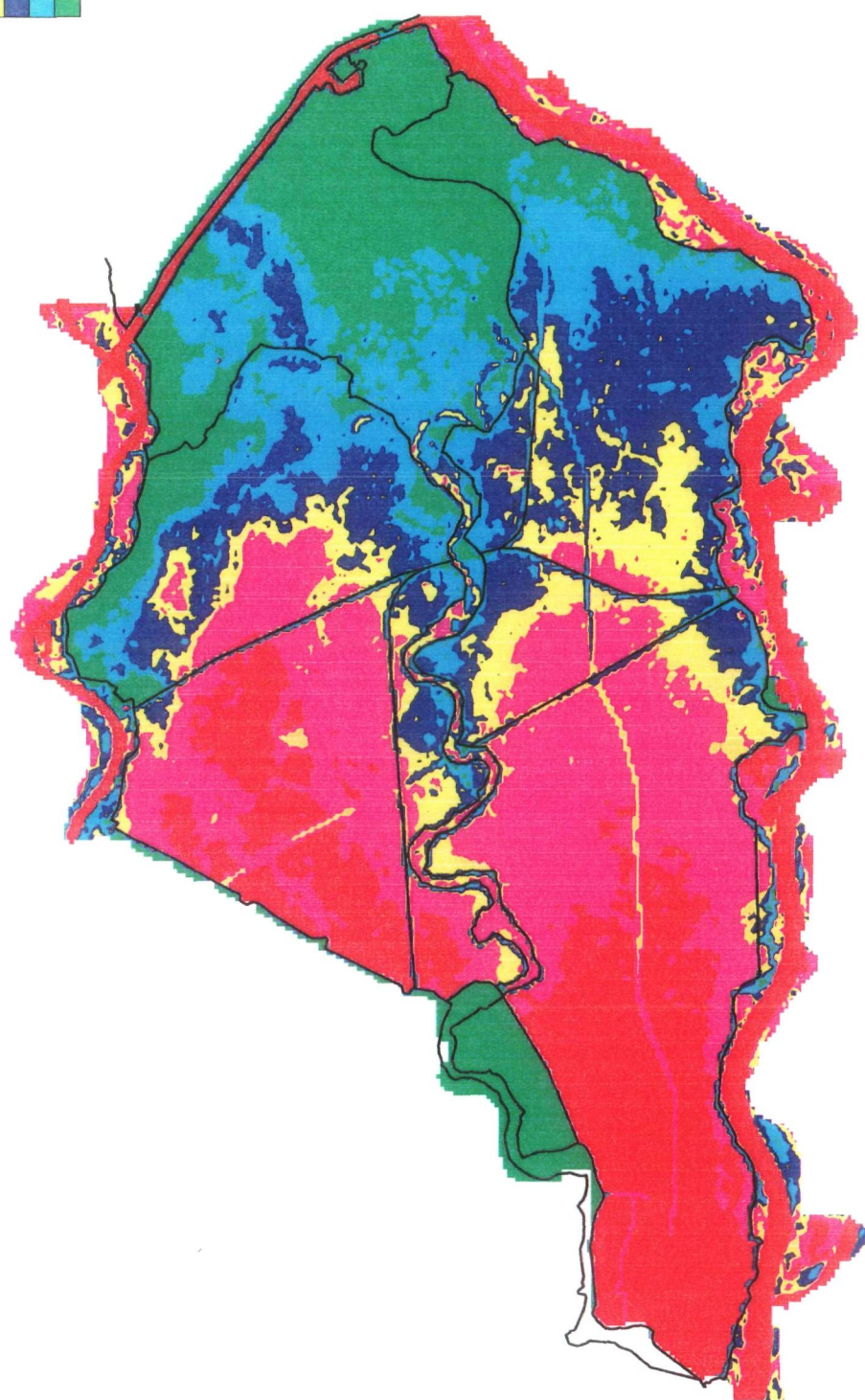
OPC = TH6

DELFT HYDRAULICS

Z993

Fig. 4.3.9





445

440

435

430

425

420

Y [km]

Dijkdoorbraak Heesselt

22.04.97

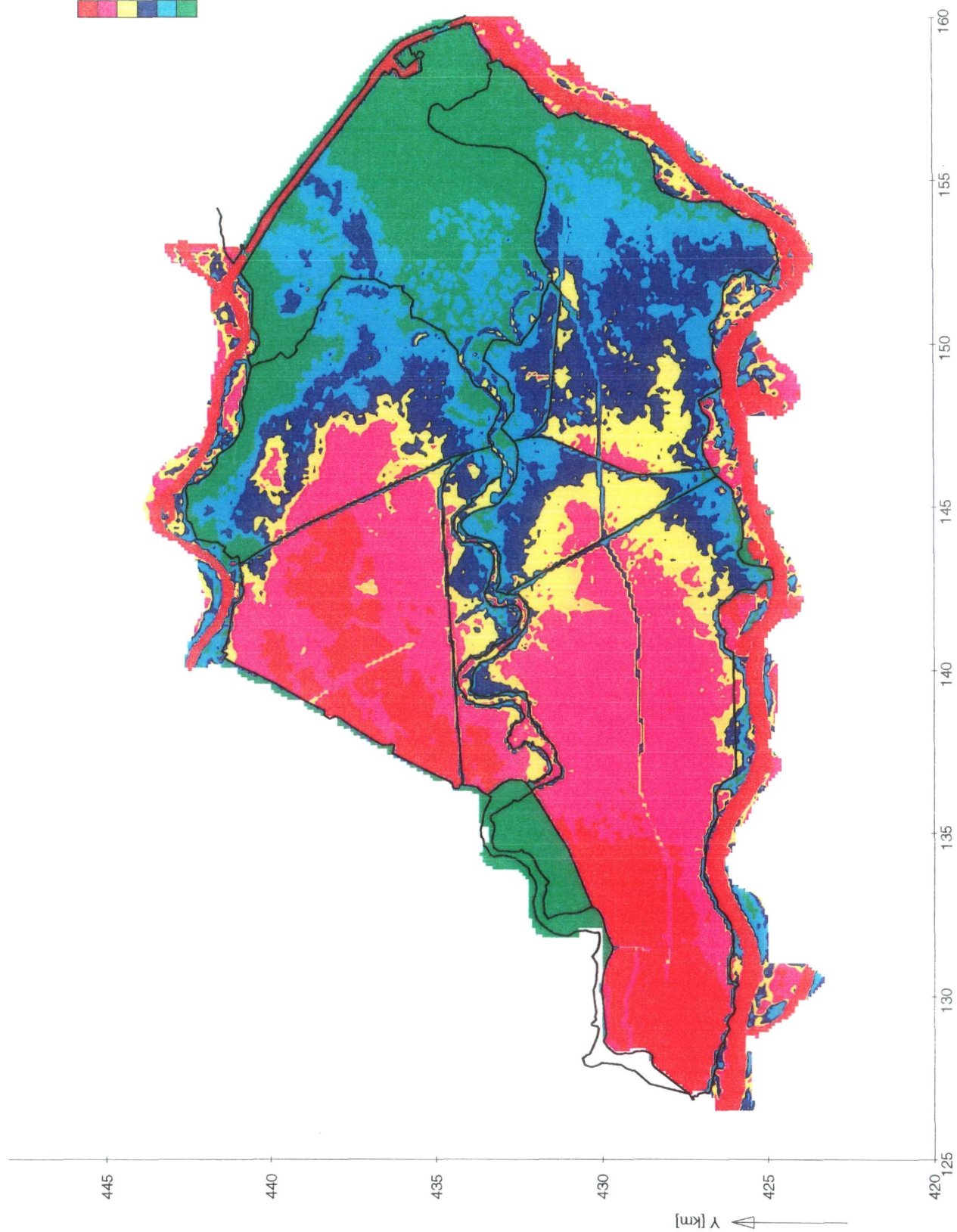
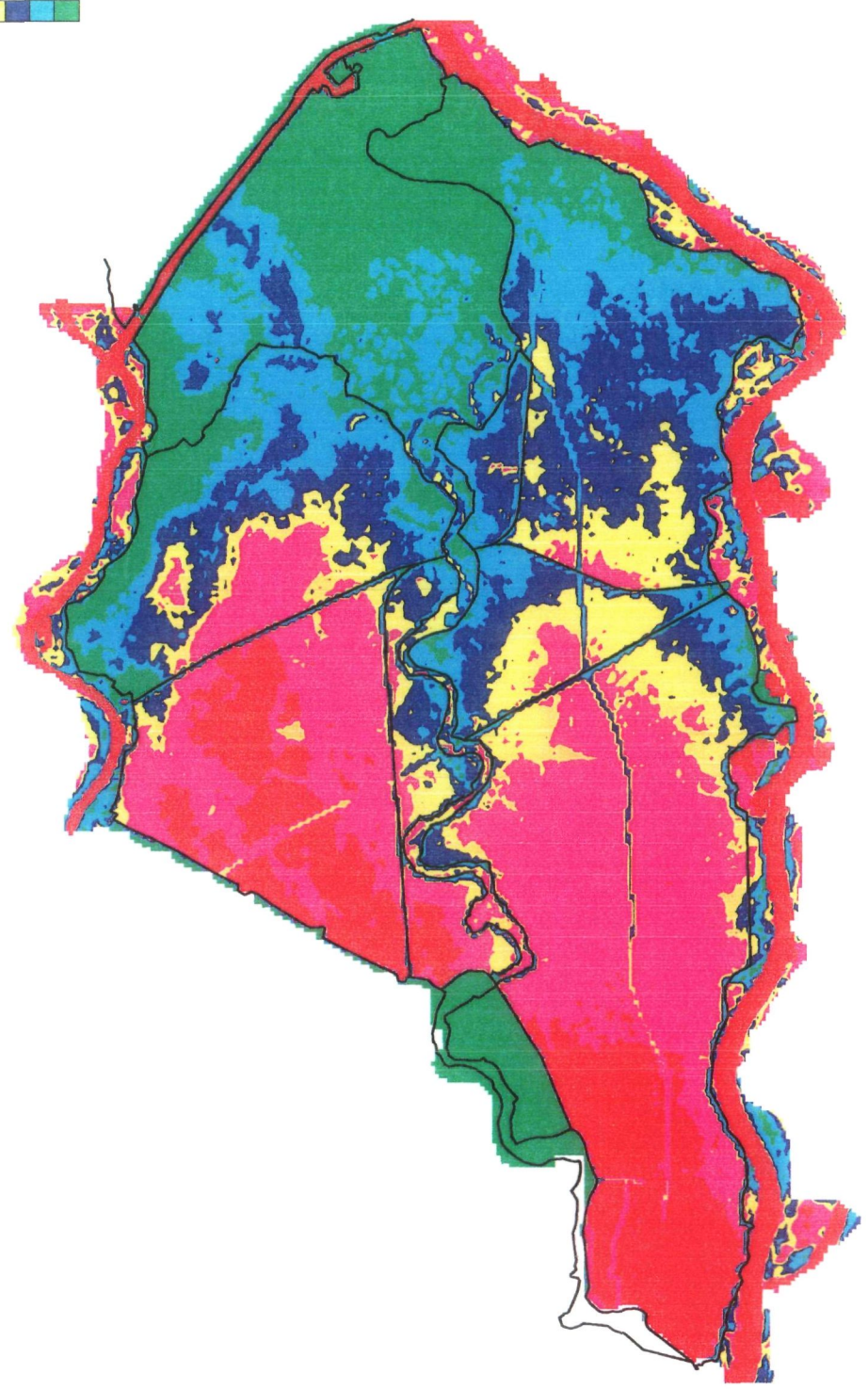
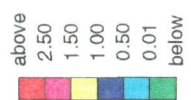
T = 168 hr.

OPC = TH6

DELFT HYDRAULICS

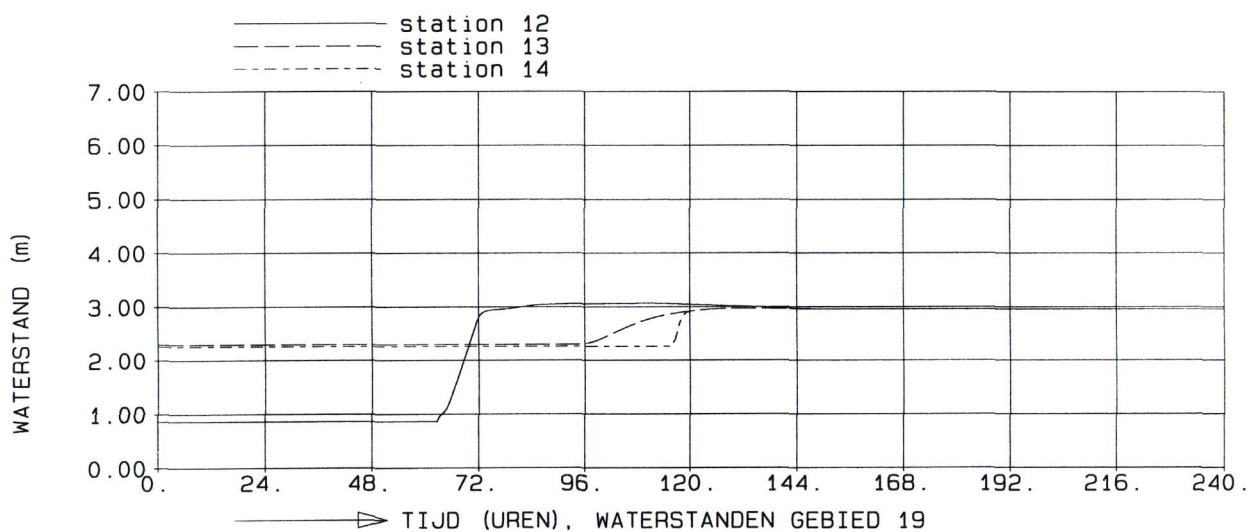
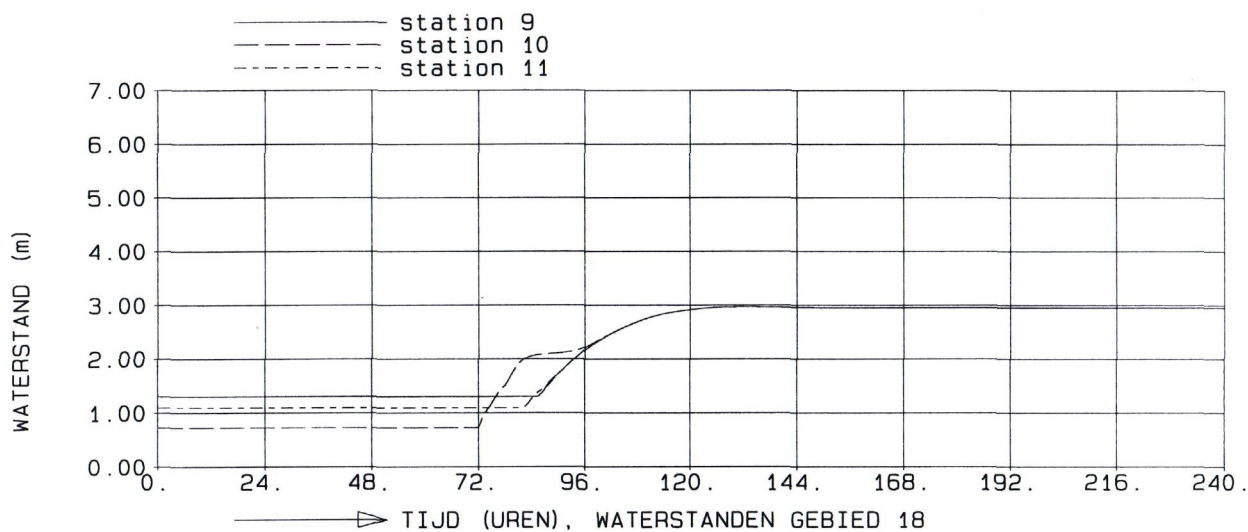
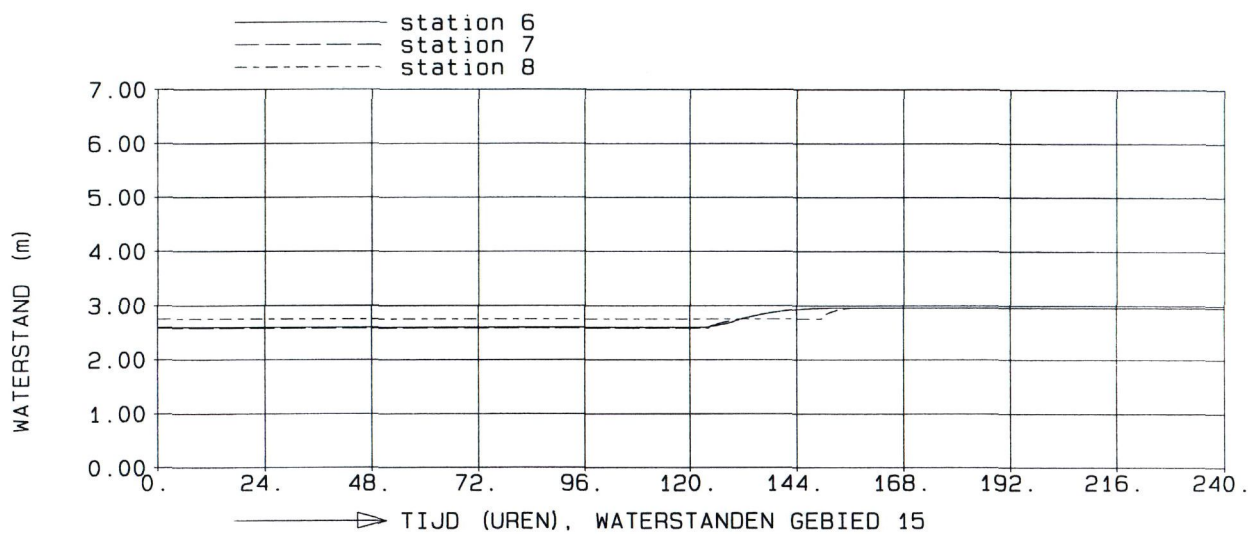
Z993

Fig. 4.3.10



Dijkdoorbraak Heesselt	22.04.97	T =216 hr.
	OPC = TH6	
DELFT HYDRAULICS	Z993	Fig. 4.3.11





DX=100 M, DIEPTE=t13, ZETA0=-2.0 M, AANTAL OPEN RANDEN=4  
 TIJDSTAP=20.00 S  
 WATERSTANDEN GEBIEDEN 15, 18 EN 19  
 DOORBRAAK DALEM

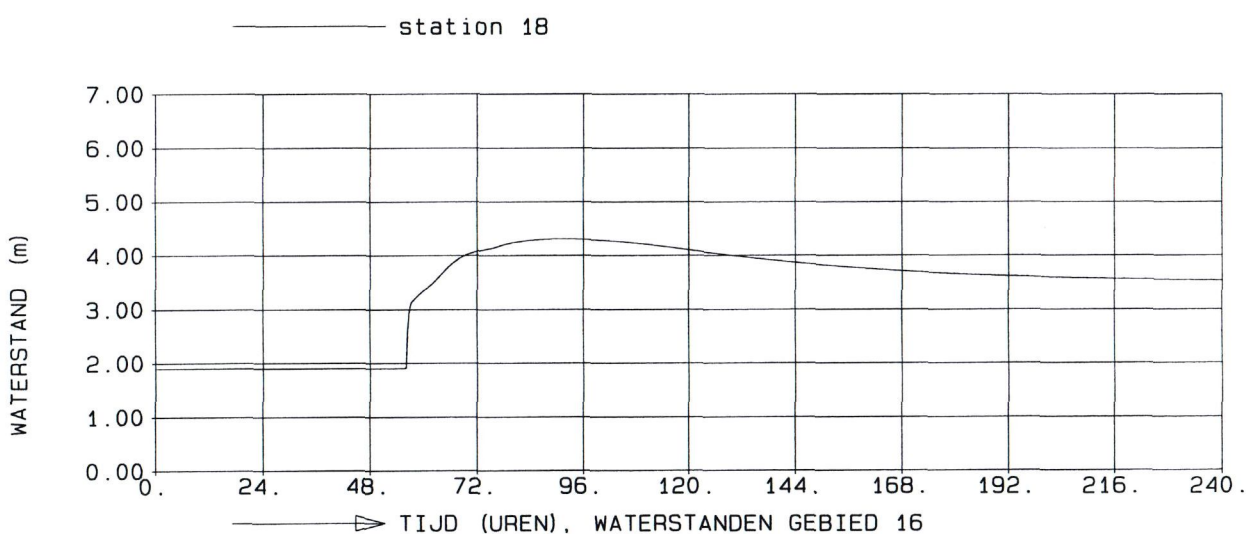
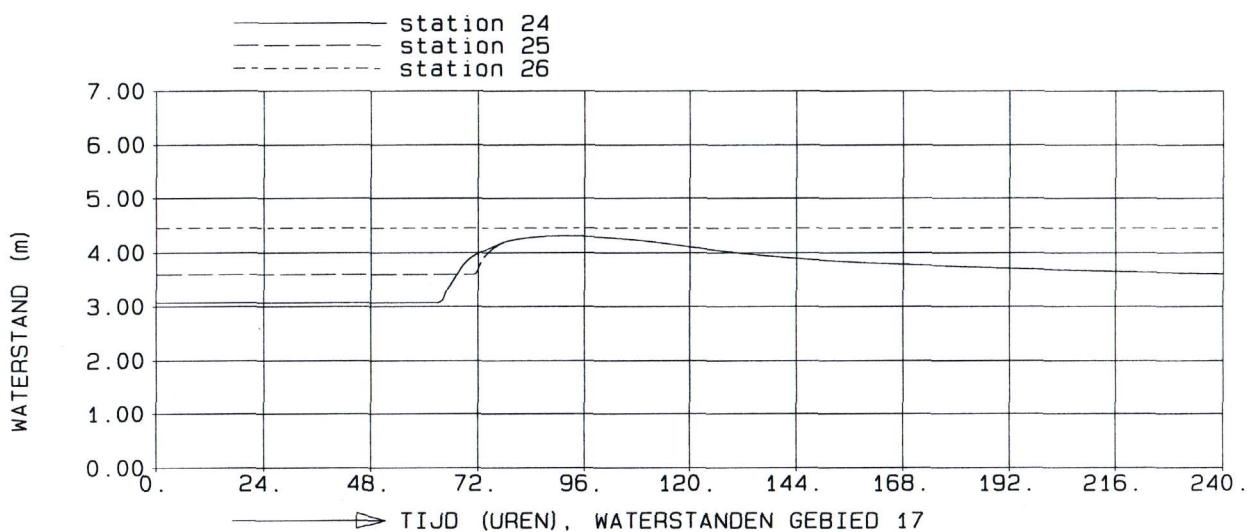
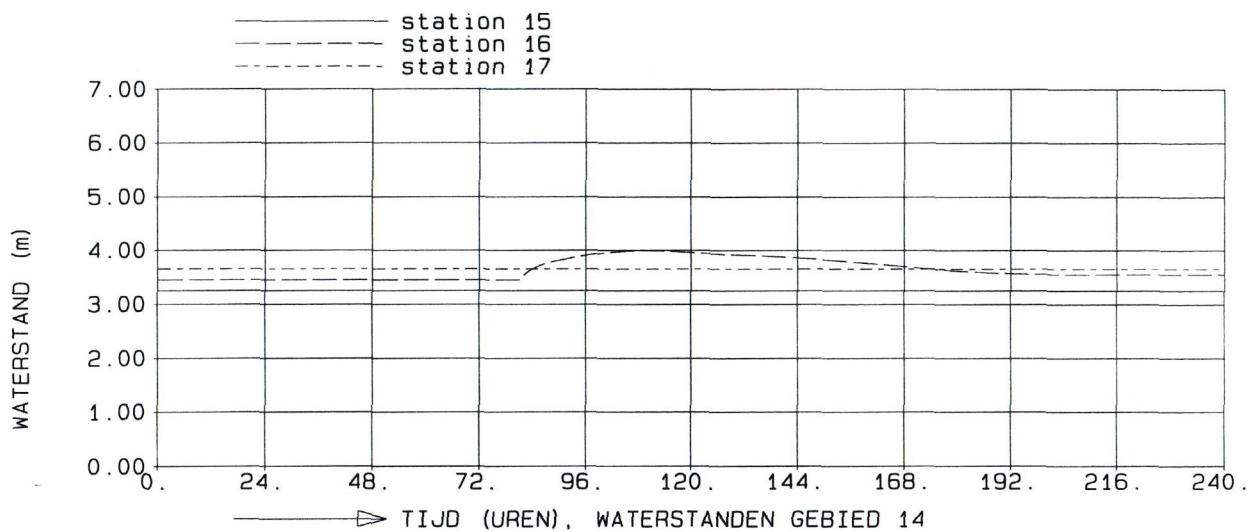
02.09.97

OPC = td6

DELFT HYDRAULICS

Z993

FIG4.4.1



DX=100 M, DIEPTE=t13, ZETA0=-2.0 M, AANTAL OPEN RANDEN=4  
 TIJDSTAP=20.00 S  
 WATERSTANDEN GEBIEDEN 14, 16 EN 17  
 DOORBRAAK DALEM

02.09.97

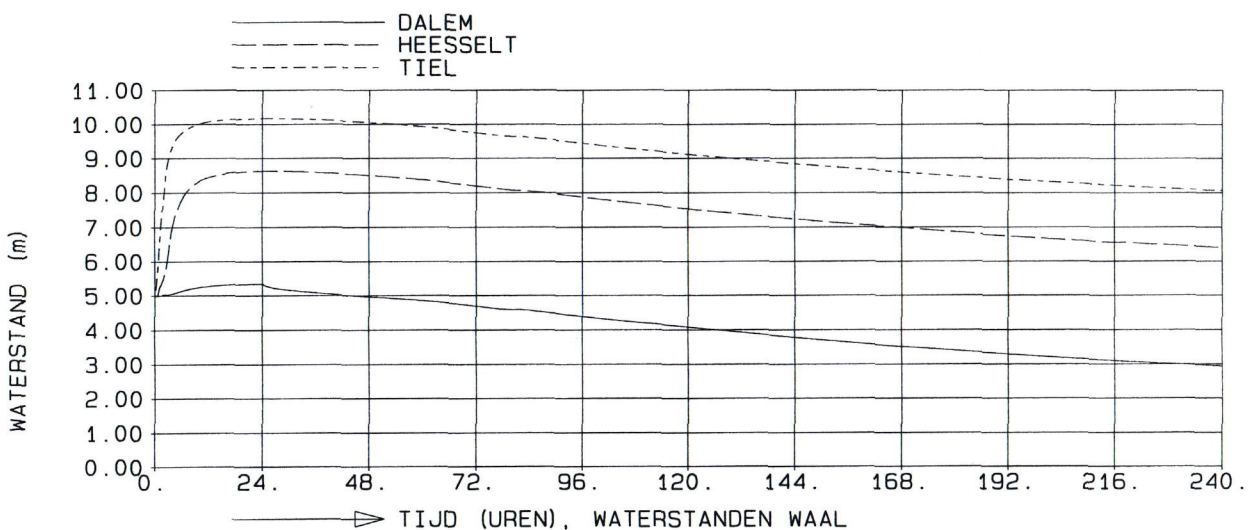
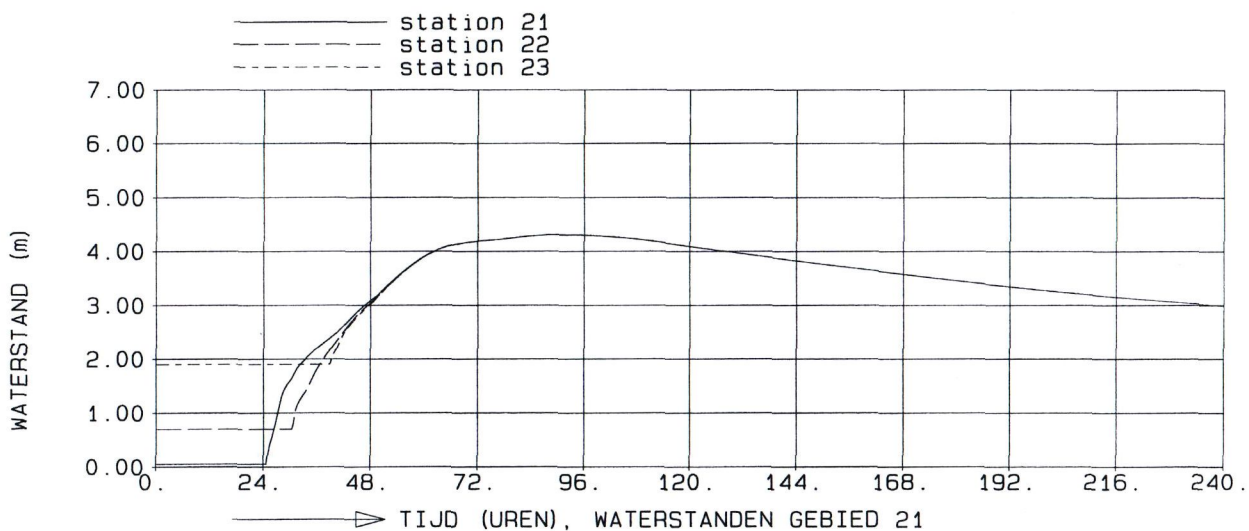
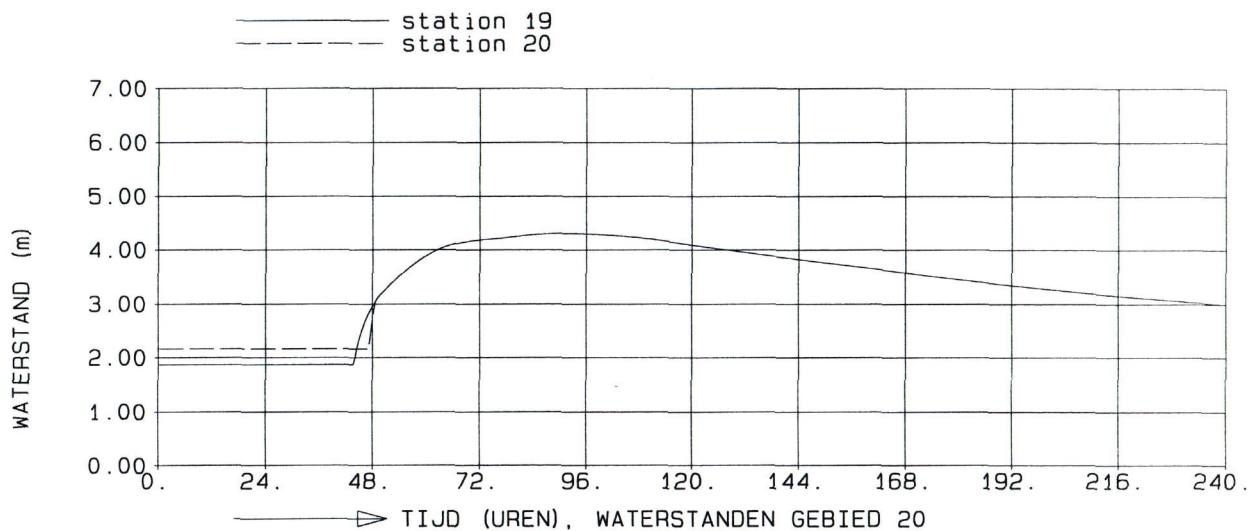
OPC = td6

DELFT HYDRAULICS

Z993

FIG4.4.2





DX=100 M, DIEPTE=t13, ZETA0=-2.0 M, AANTAL OPEN RANDEN=4  
 TIJDSTAP=20.00 S  
 WATERSTANDEN GEBIEDEN 20, 21 EN WAAL  
 DOORBRAAK DALEM

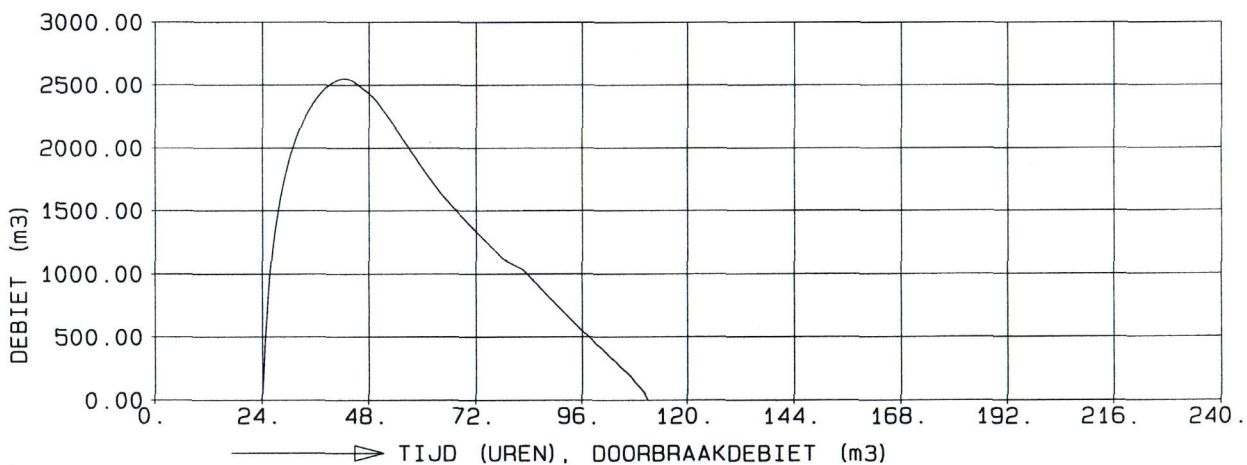
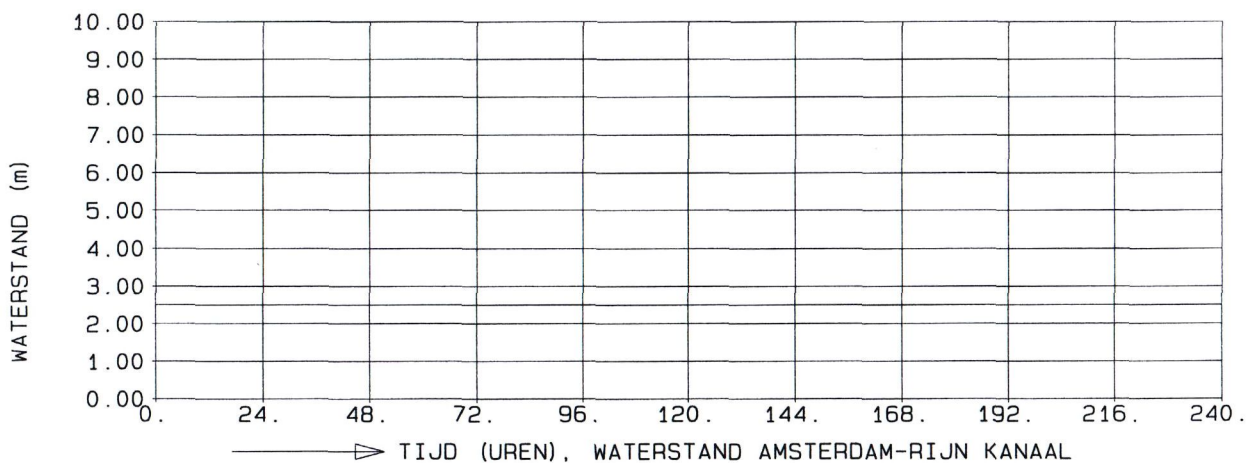
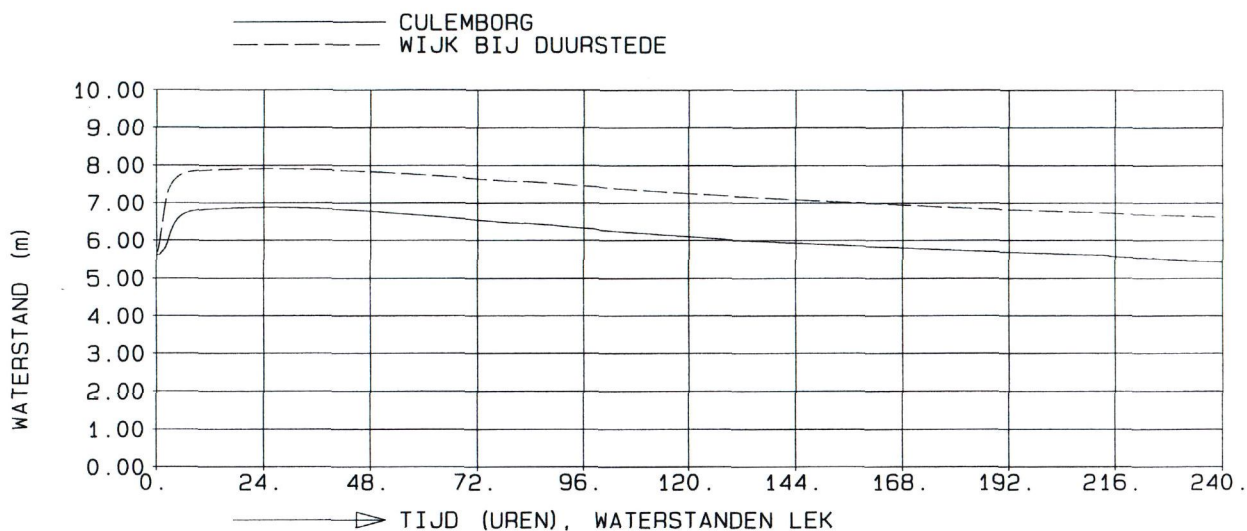
02.09.97

OPC = TD6

DELFT HYDRAULICS

Z993

FIG4.4.3



DX=100 M, DIEPTE=t13, ZETA0=-2.0 M, AANTAL OPEN RANDEN=4  
 TIJDSTAP=20.00 S  
 WATERSTANDEN LEK, A-R KANAAL EN DOORBRAAKDEBIET  
 DOORBRAAK DALEM

02.09.97

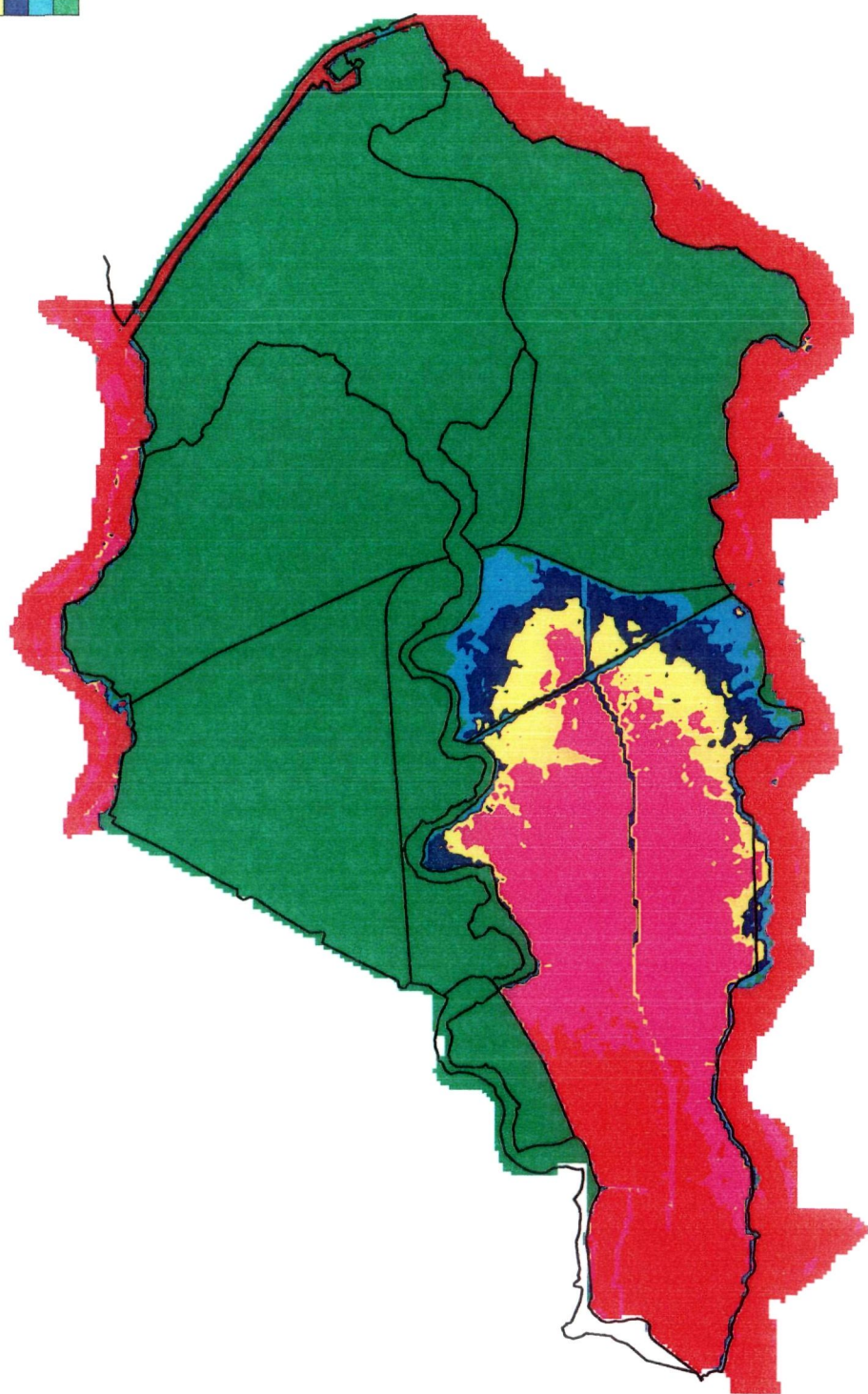
OPC = td6

DELFT HYDRAULICS

Z993

FIG4.4.4





dijkdoorbraak Dalem

22.04.97

T = 24 hr.

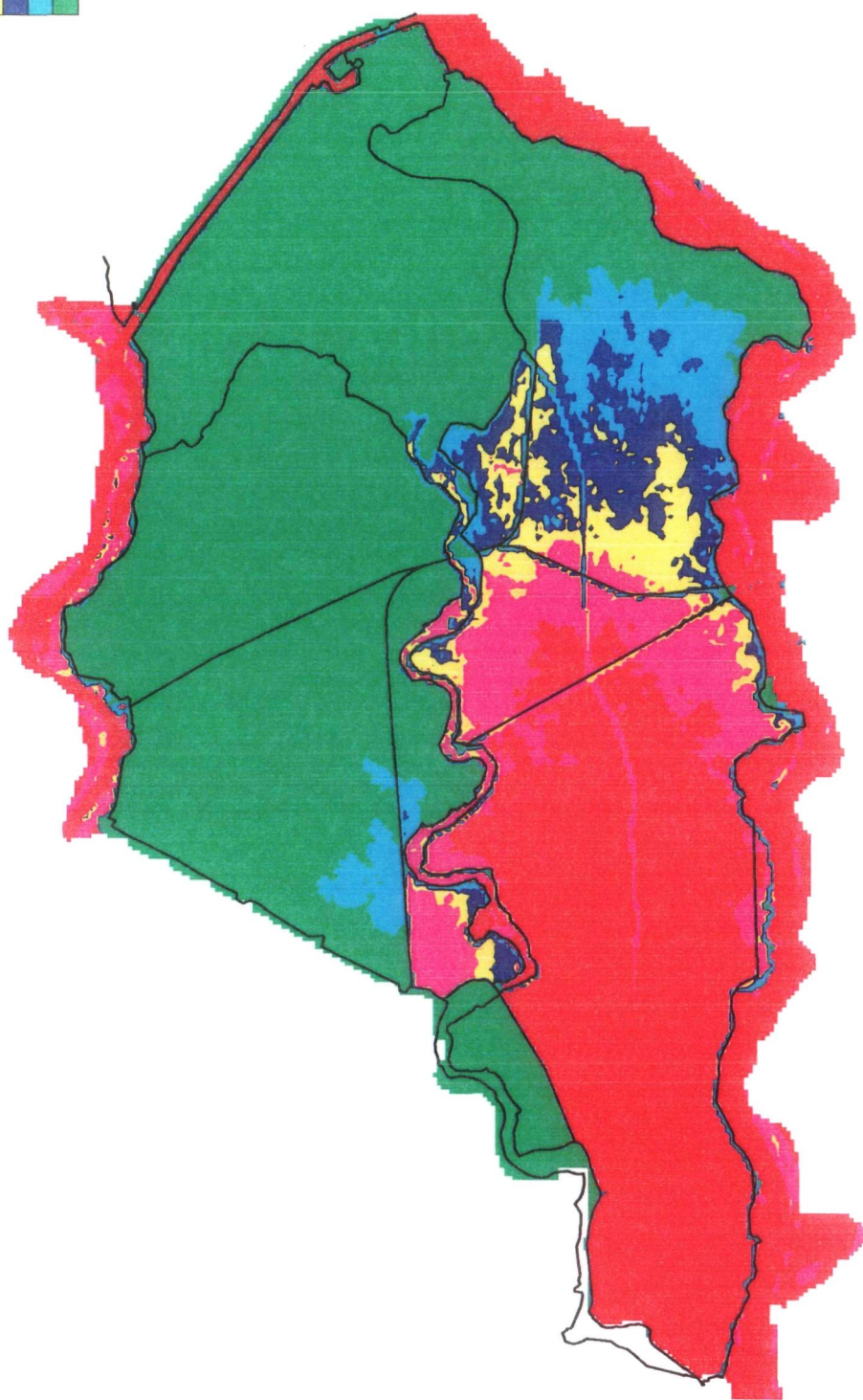
OPC = TD6

DELFT HYDRAULICS

Z993

Fig. 4.4.5

above  
2.50  
1.50  
1.00  
0.50  
0.01  
below



DELFT HYDRAULICS

dijkdoorbraak Dalem

22.04.97

T = 48 hr.

OPC = TD6

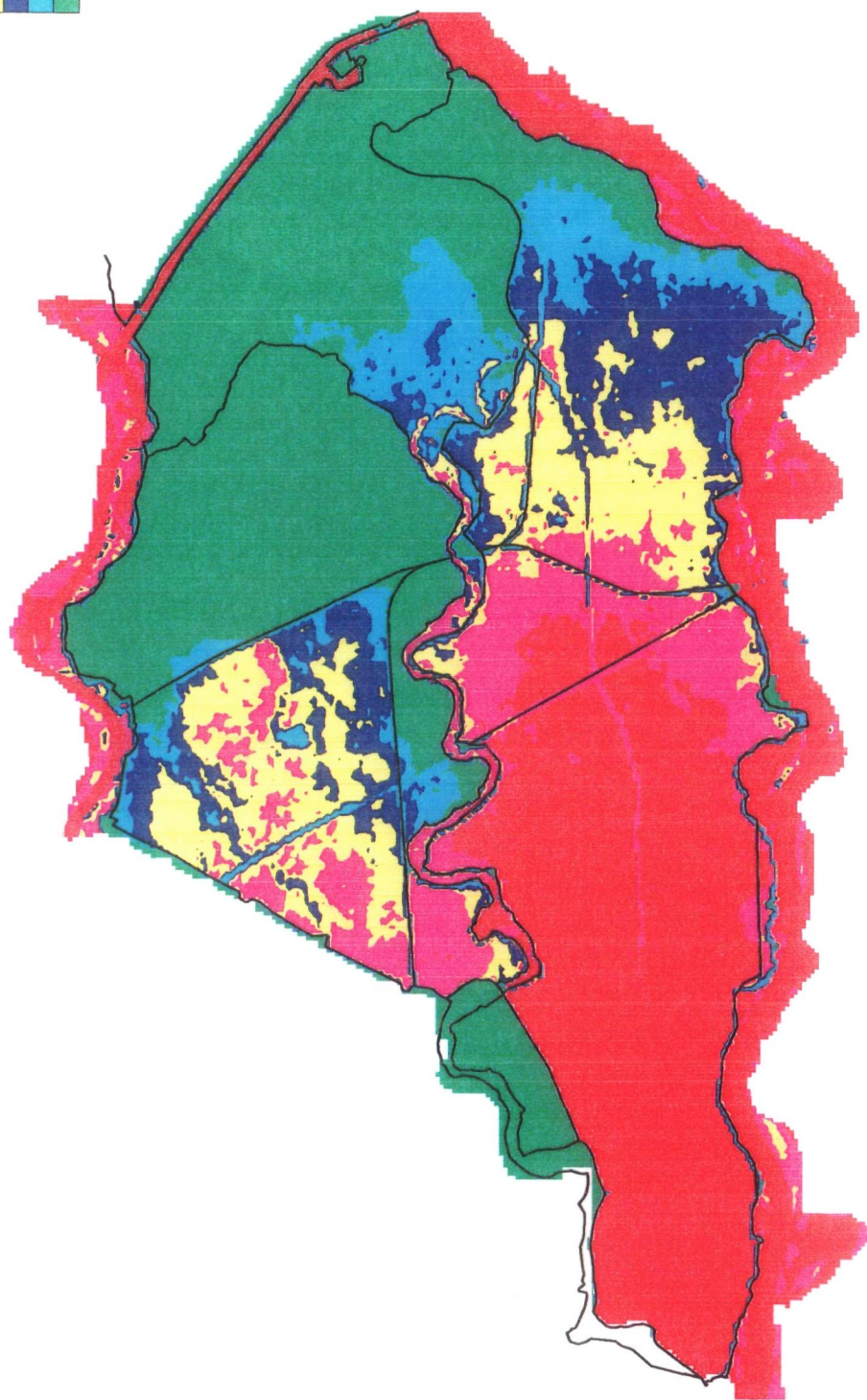
DELFT HYDRAULICS

Z993

Fig. 4.4.6



above  
2.50  
1.50  
1.00  
0.50  
0.01  
below



125 130 135 140 145 150 155 160

X [km]

Y [km]

dijkdoorbraak Dalem

22.04.97

T = 72 hr.

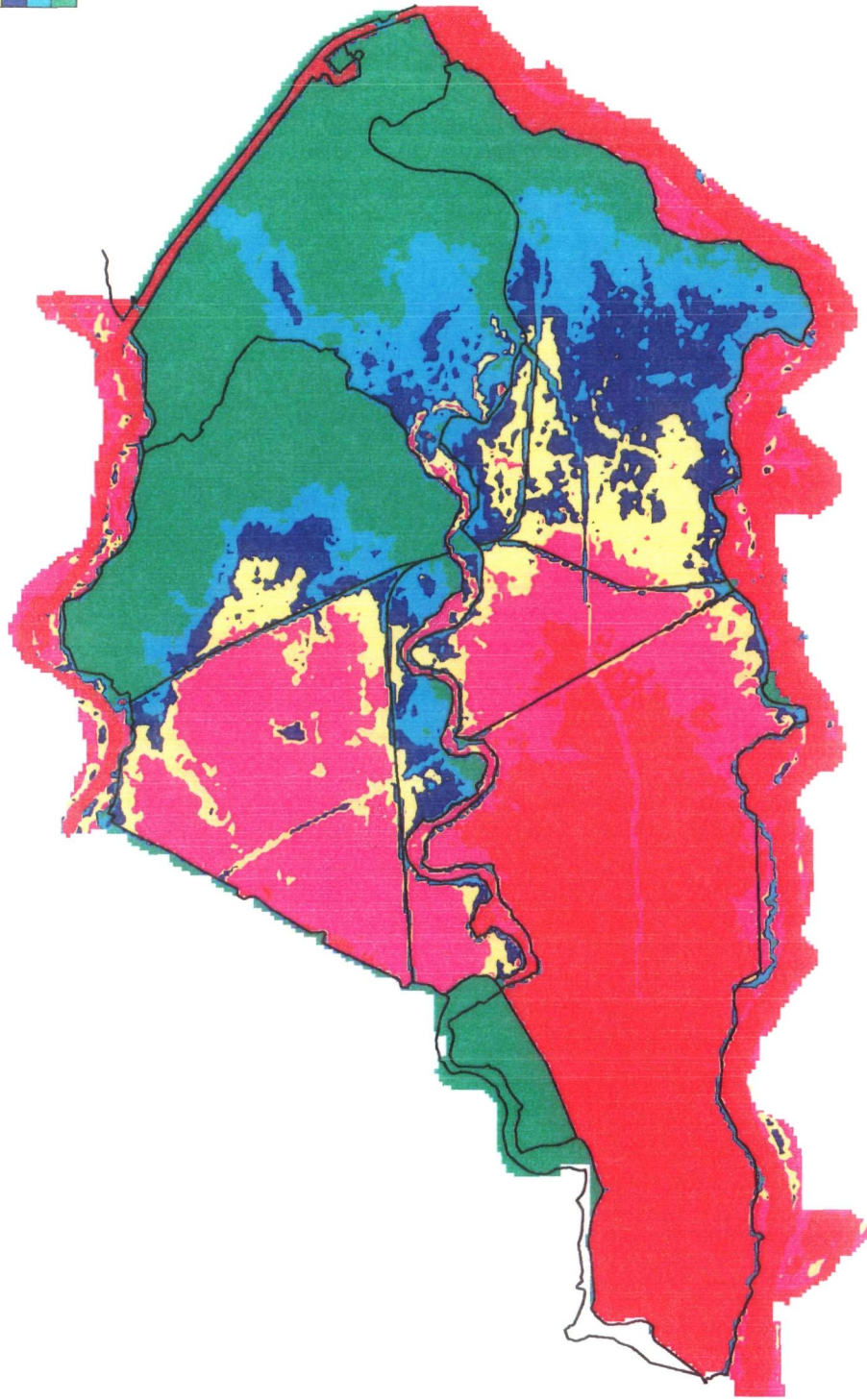
OPC = TD6

DELFT HYDRAULICS

Z993

Fig. 4.4.7

above  
2.50  
1.50  
1.00  
0.50  
0.01  
below



DELFT HYDRAULICS

X [km]

Y [km]

dijkdoorbraak Dalem

22.04.97

T = 96 hr.

OPC = TD6

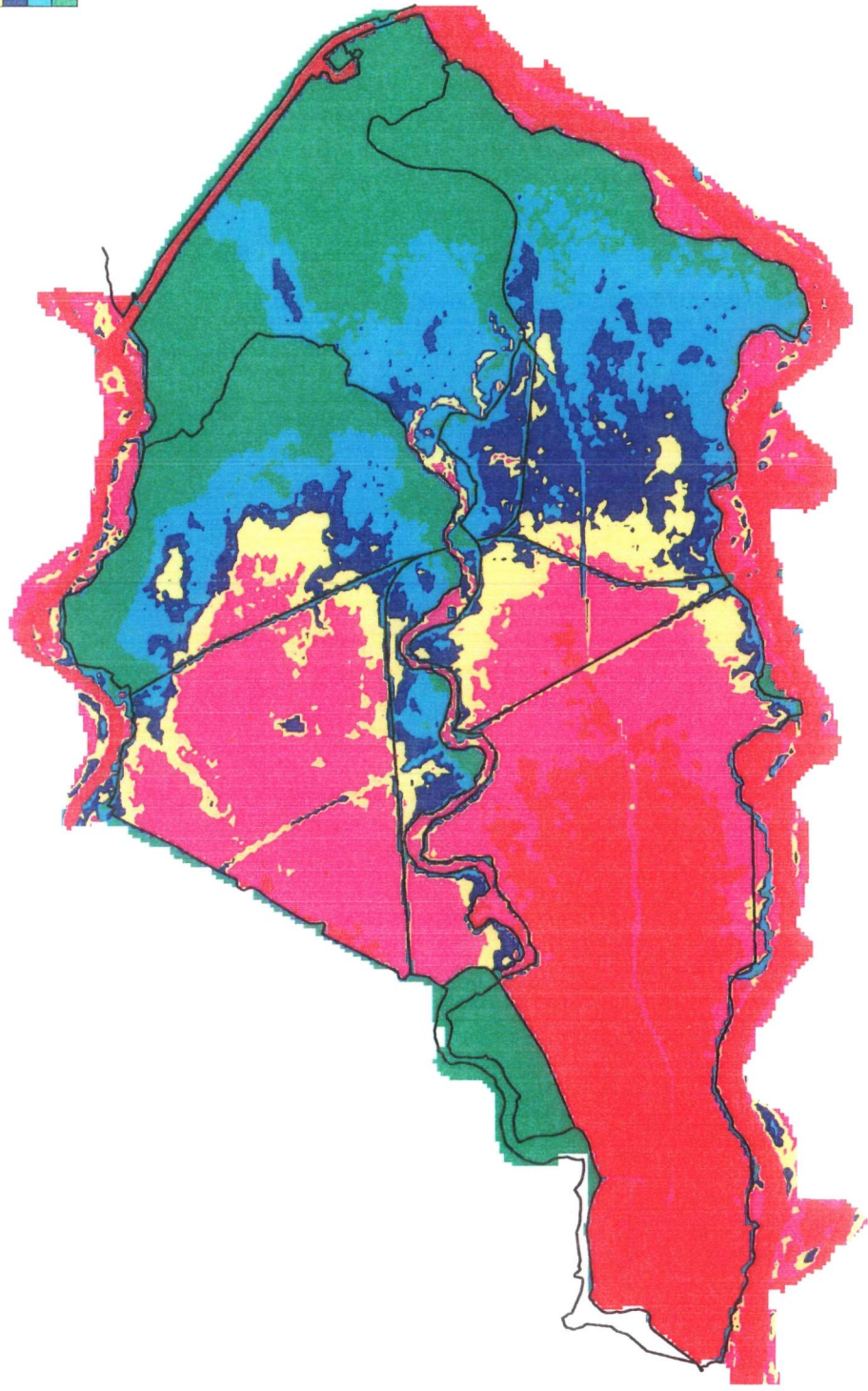
DELFT HYDRAULICS

Z993

Fig. 4.4.8



above  
2.50  
1.50  
1.00  
0.50  
0.01  
below



dijkdoorbraak Dalem

22.04.97

T =120 hr.

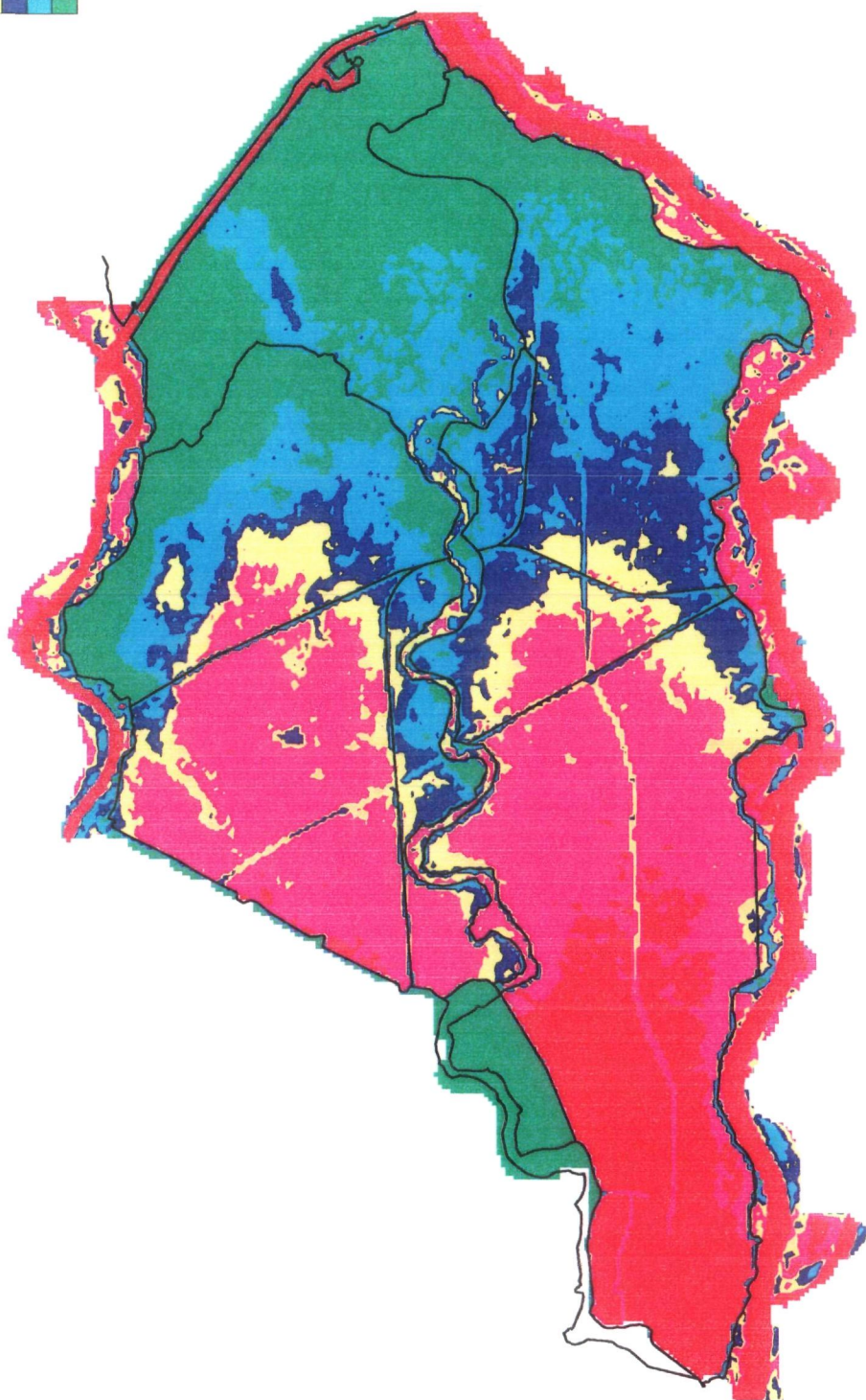
OPC = TD6

DELFT HYDRAULICS

Z993

Fig. 4.4.9

above  
2.50  
1.50  
1.00  
0.50  
0.01  
below



Y [km]

X [km]

DELFT HYDRAULICS

dijkdoorbraak Dalem

22.04.97

T = 168 hr.

OPC = TD6

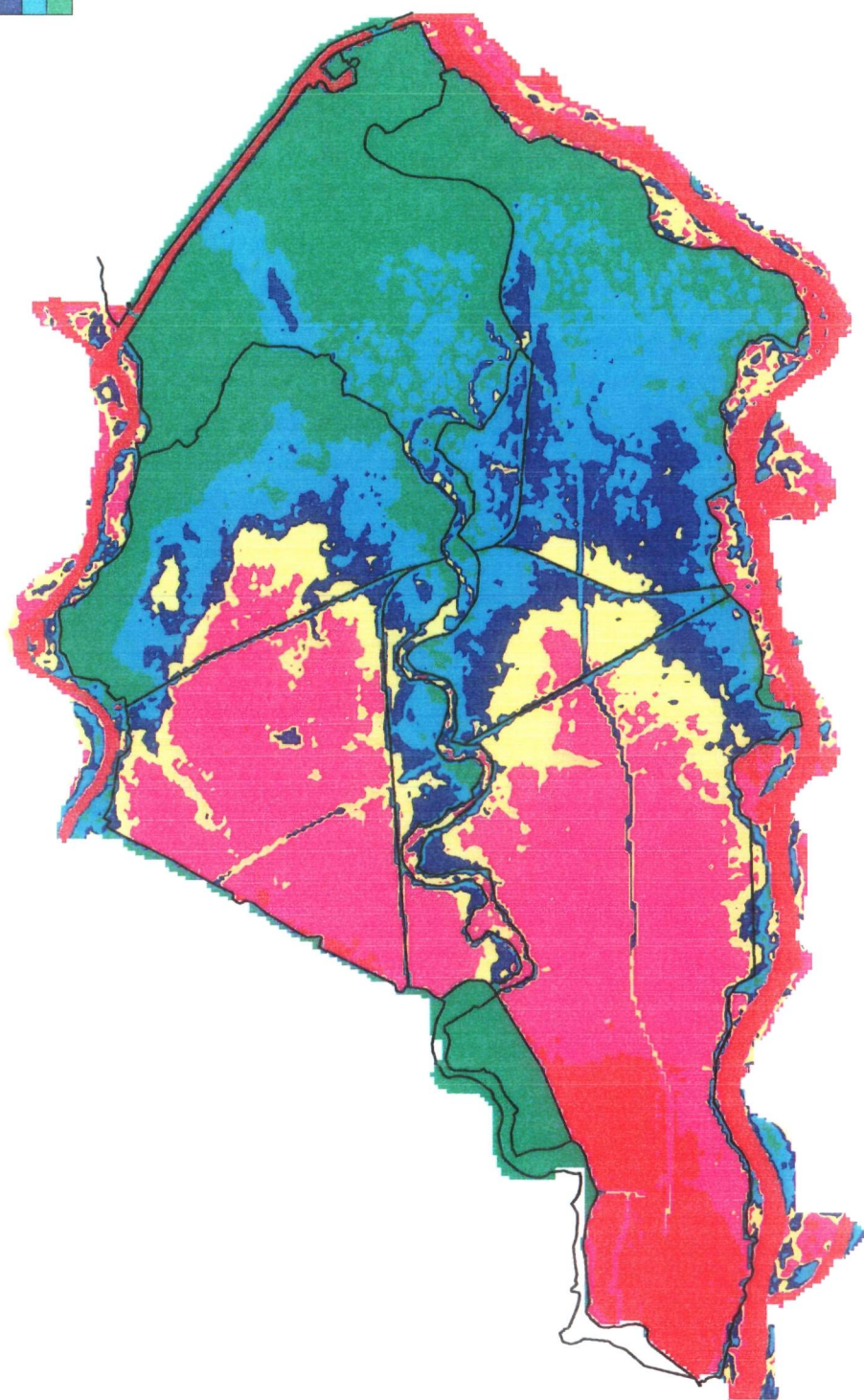
DELFT HYDRAULICS

Z993

Fig. 4.4.10



above  
2.50  
1.50  
1.00  
0.50  
0.01  
below



420 125 130 135 140 145 150 155 160

X [km]

Y [km]

dijkdoorbraak Dalem

22.04.97

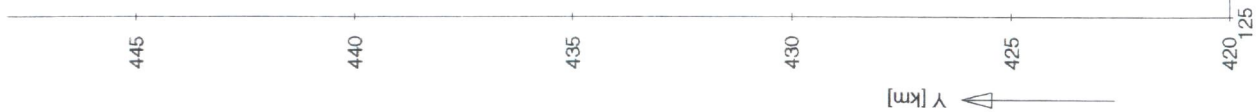
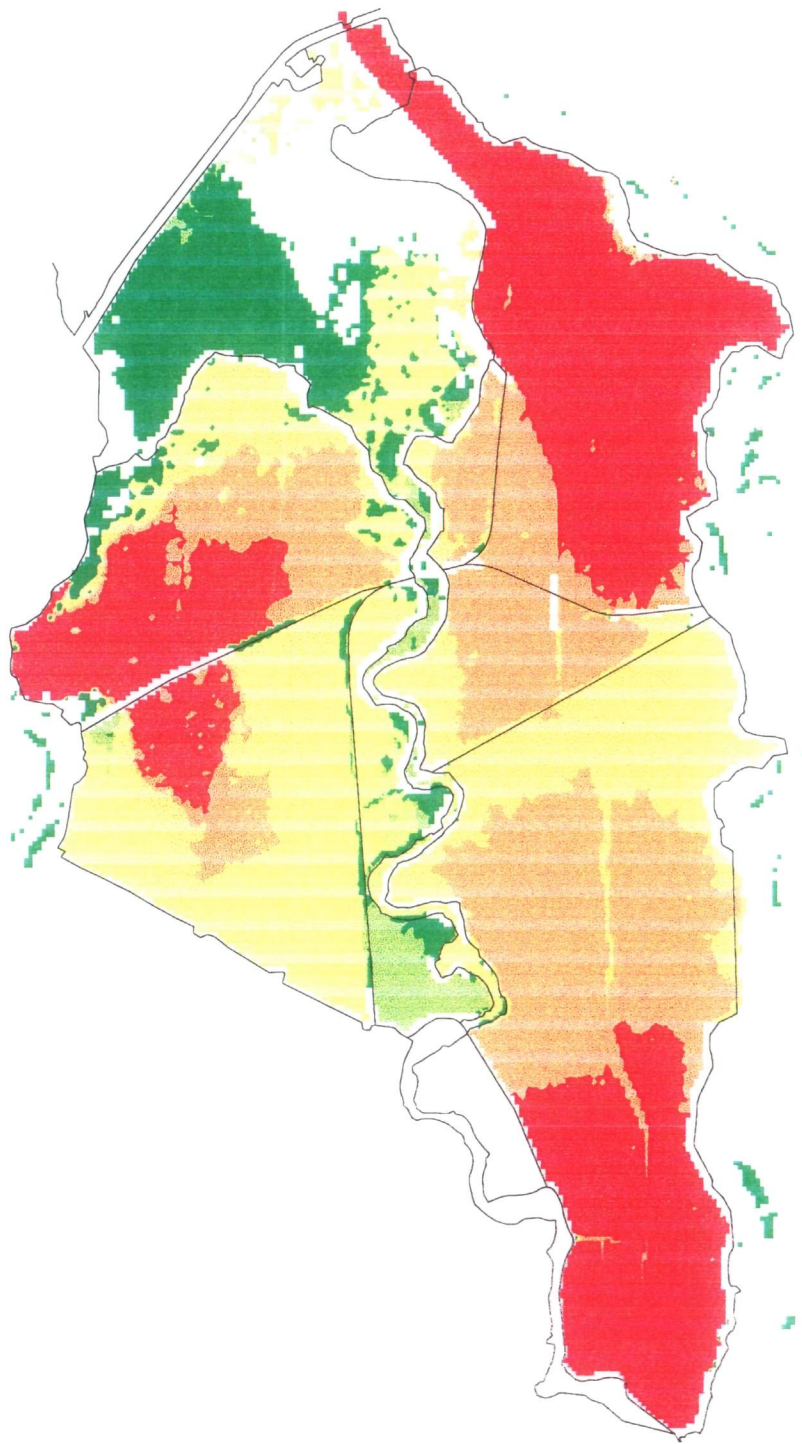
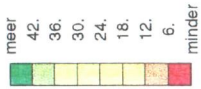
T =216 hr.

OPC = TD6

DELFT HYDRAULICS

Z993

Fig. 4.4.11



Tijdsduur tot onderlopen bij mogelijke dijkdoorbraken  
in Culemborg, Tiel, Heesselt of Dalem.

22.04.97

DELFT HYDRAULICS

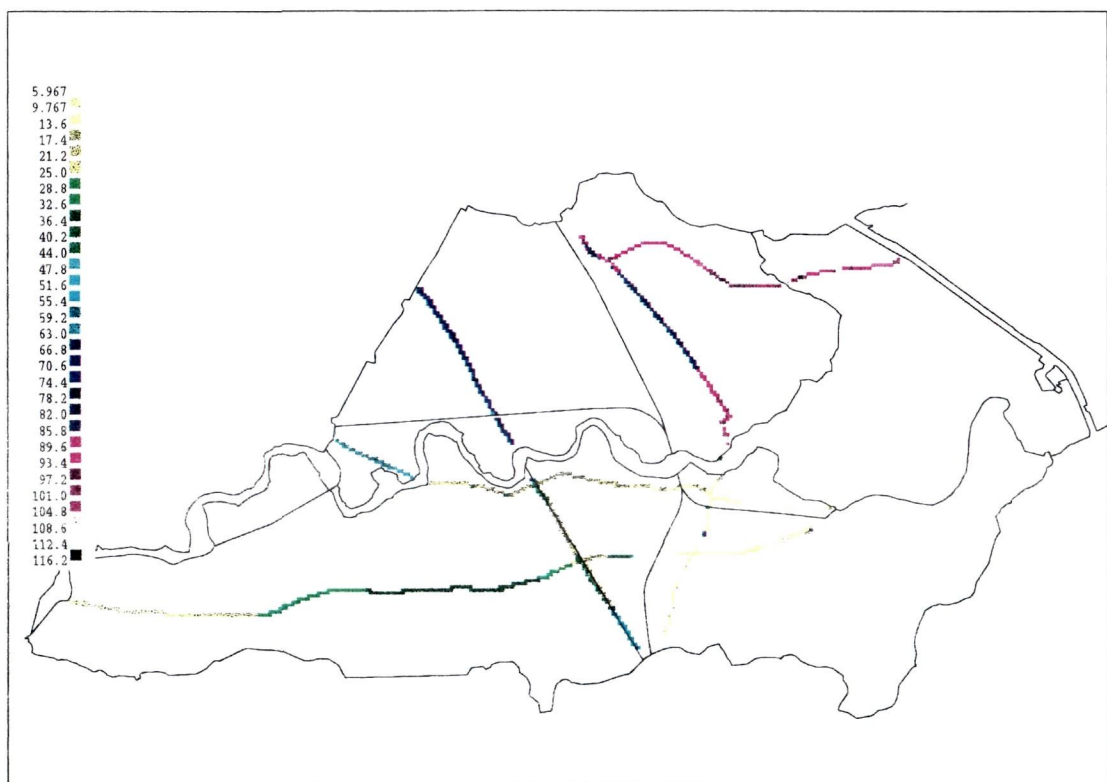
Z993

Fig. 4.5.1

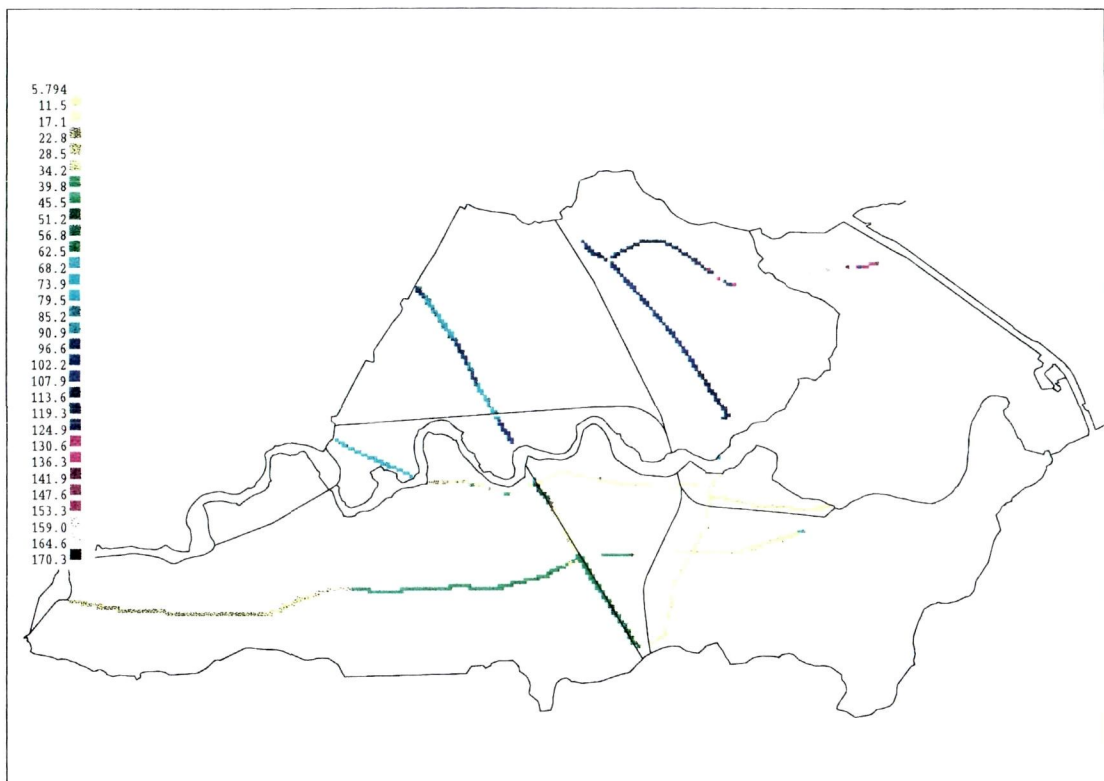




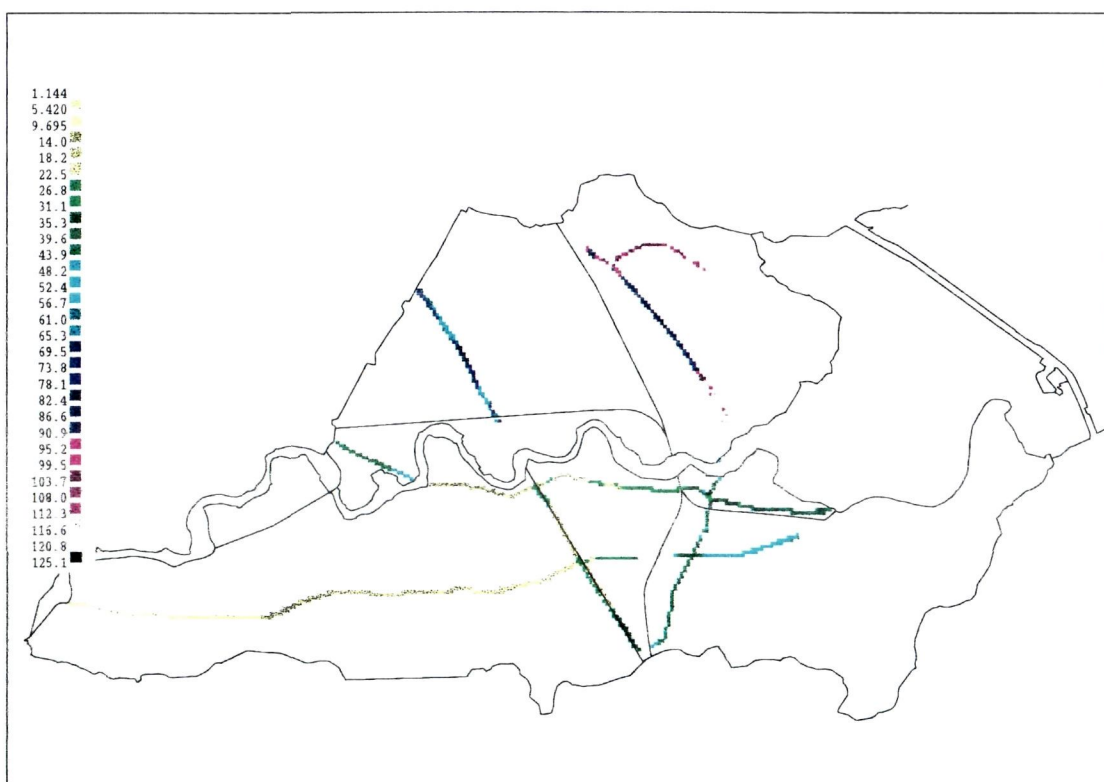
Figuur 4.5.2., Begaanbaarheidsduur (in uren) wegen bij een dijkdoorbraak in Culemborg



Figuur 4.5.3., Begaanbaarheidsduur (in uren) wegen bij een dijkdoorbraak in Tiel

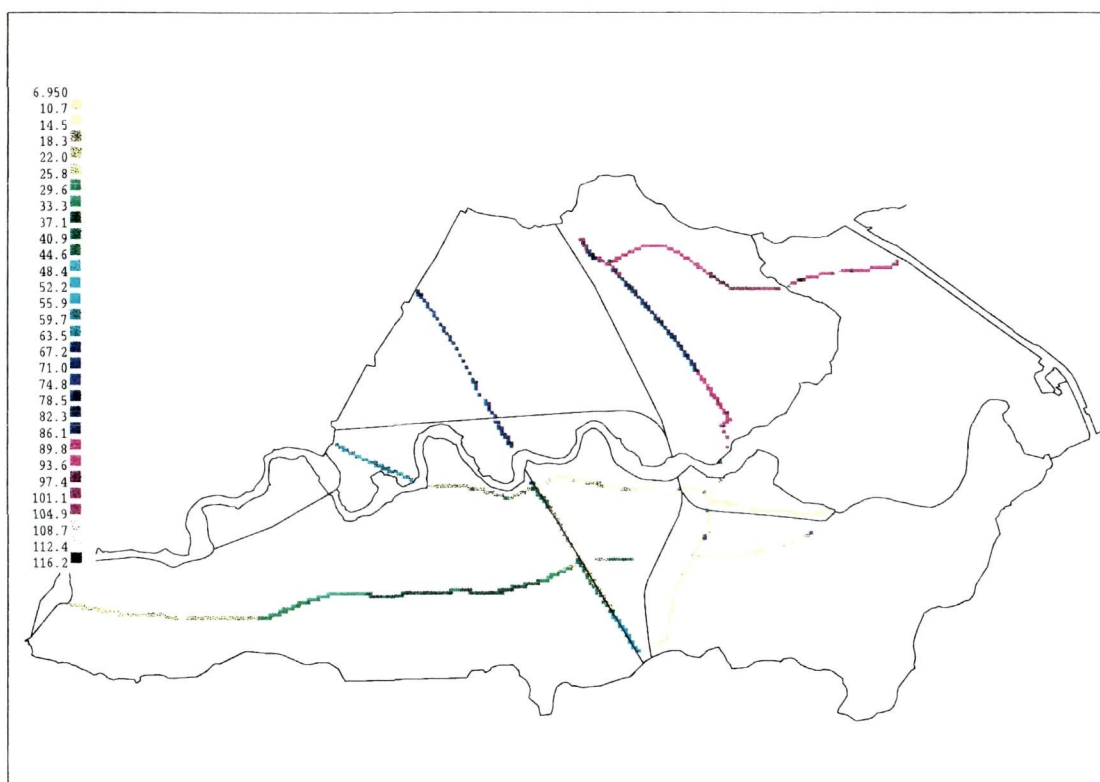


Figuur 4.5.4., Begaanbaarheidsduur (in uren) wegen bij een dijkdoorbraak in Heesselt

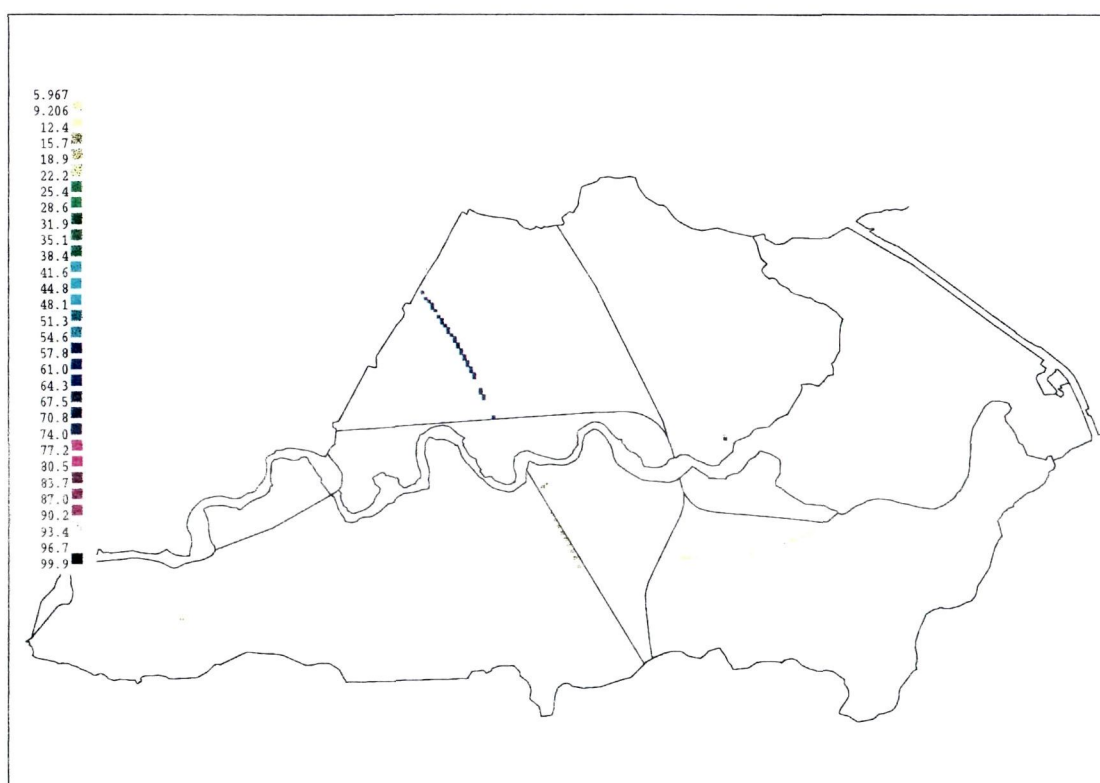


Figuur 4.5.5., Begaanbaarheidsduur (in uren) wegen bij een dijkdoorbraak in Dalem

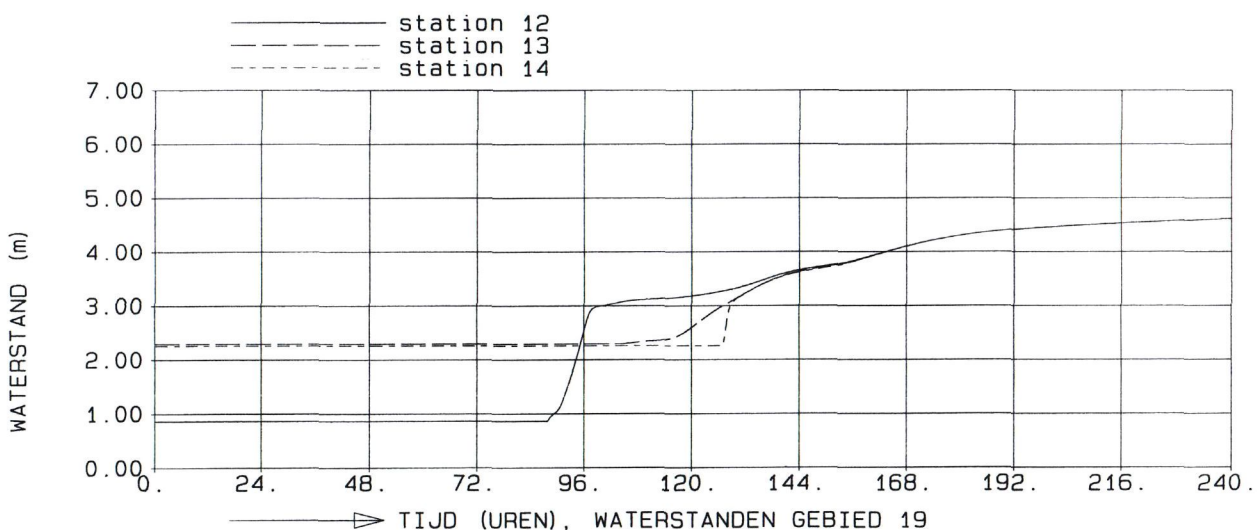
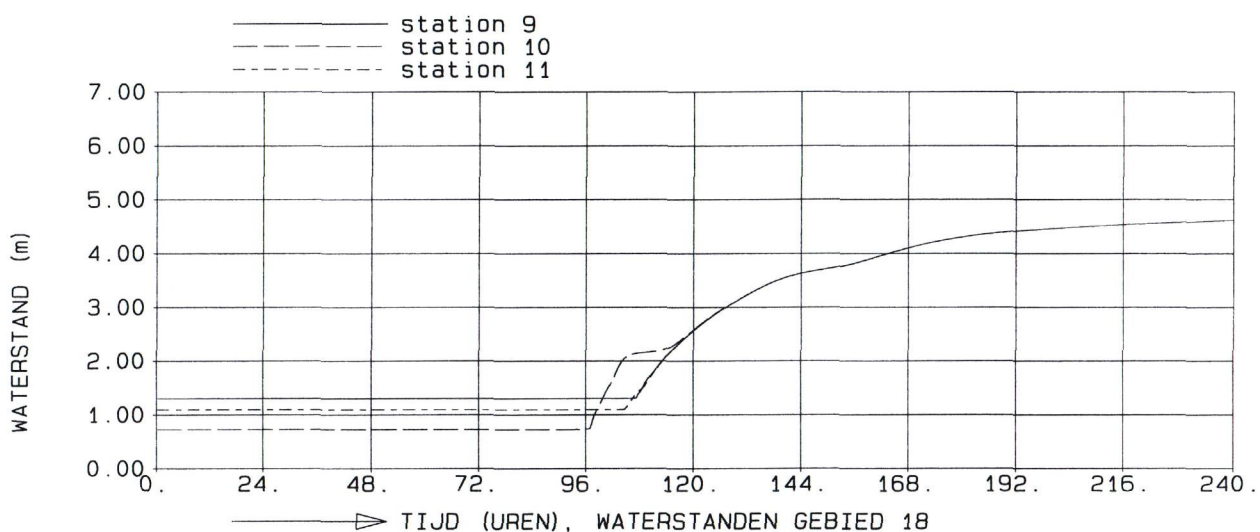
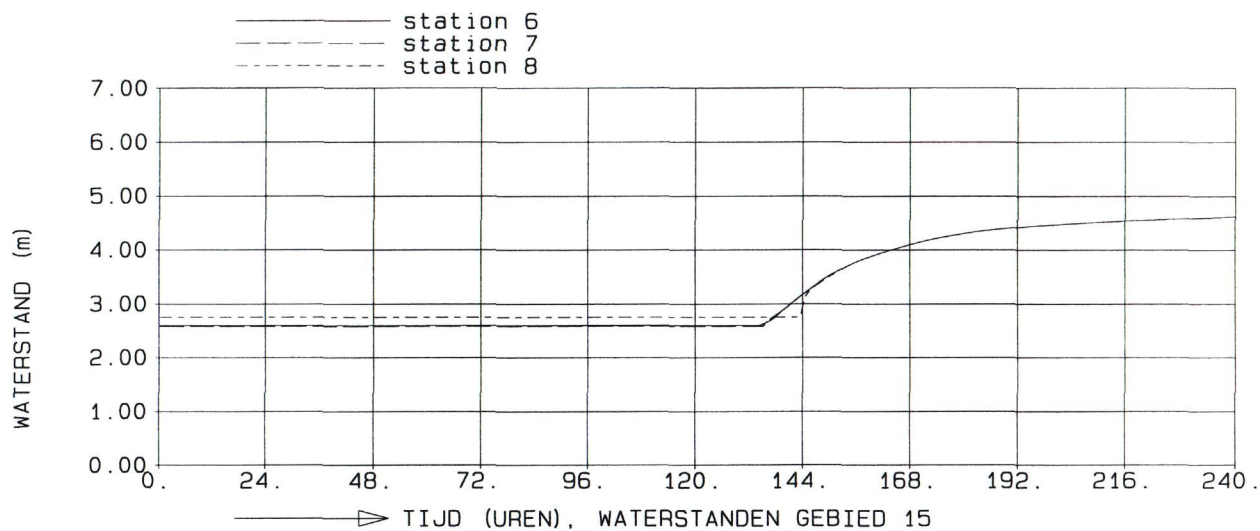




Figuur 4.5.6., Begaanbaarheidsduur (in uren) wegen bij een dijkdoorbraak in Tiel, punten waarvoor het hoogtecriterium maatgevend bleek



Figuur 4.5.7., Begaanbaarheidsduur (in uren) wegen bij een dijkdoorbraak in Tiel, punten waarvoor het snelheidscriterium maatgevend bleek



DX=100 M, DIEPTE=t13, ZETA0=-2.0 M, AANTAL OPEN RANDEN=4  
 TIJDSTAP=20.00 S  
 WATERSTANDEN GEBIEDEN 15, 18 EN 19  
 DOORBRAAK HEESSELT, ZONDER DALEMSE OVERLATEN

03.09.97

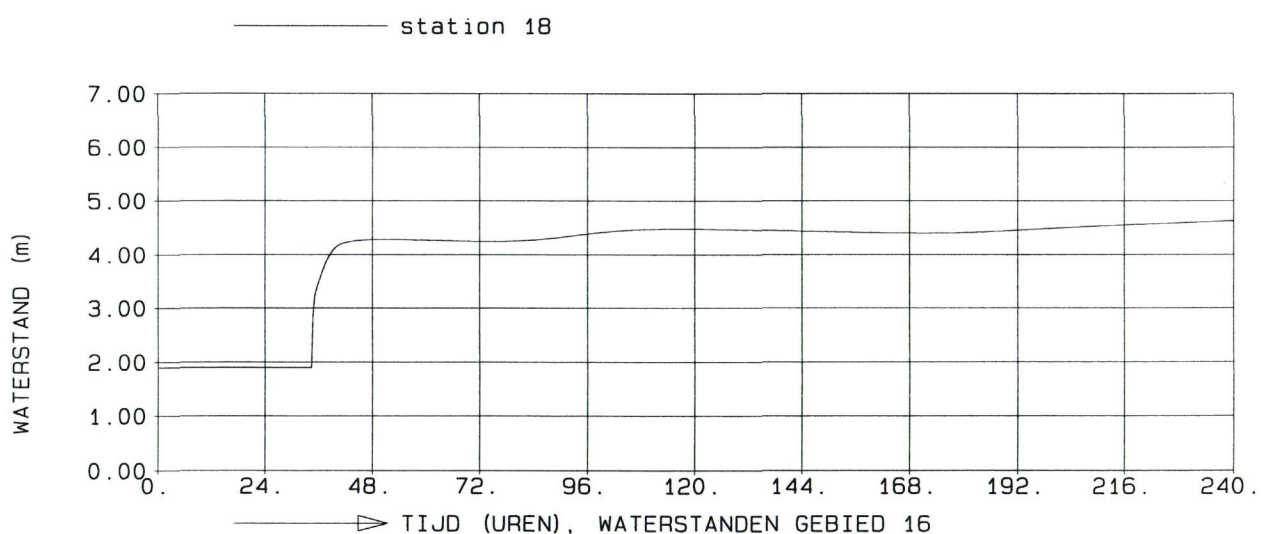
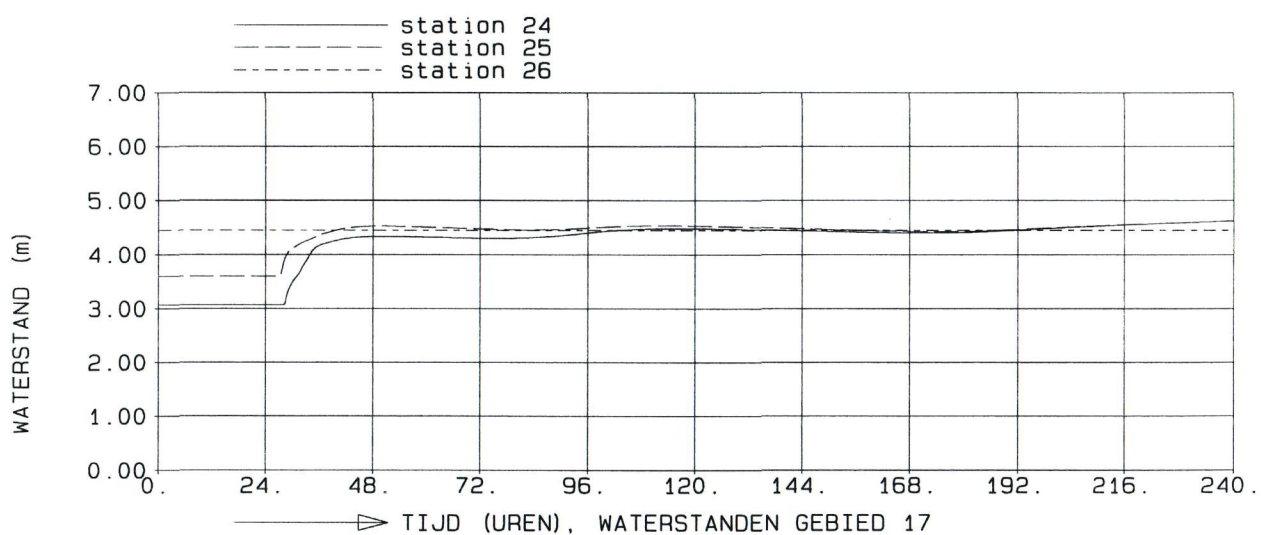
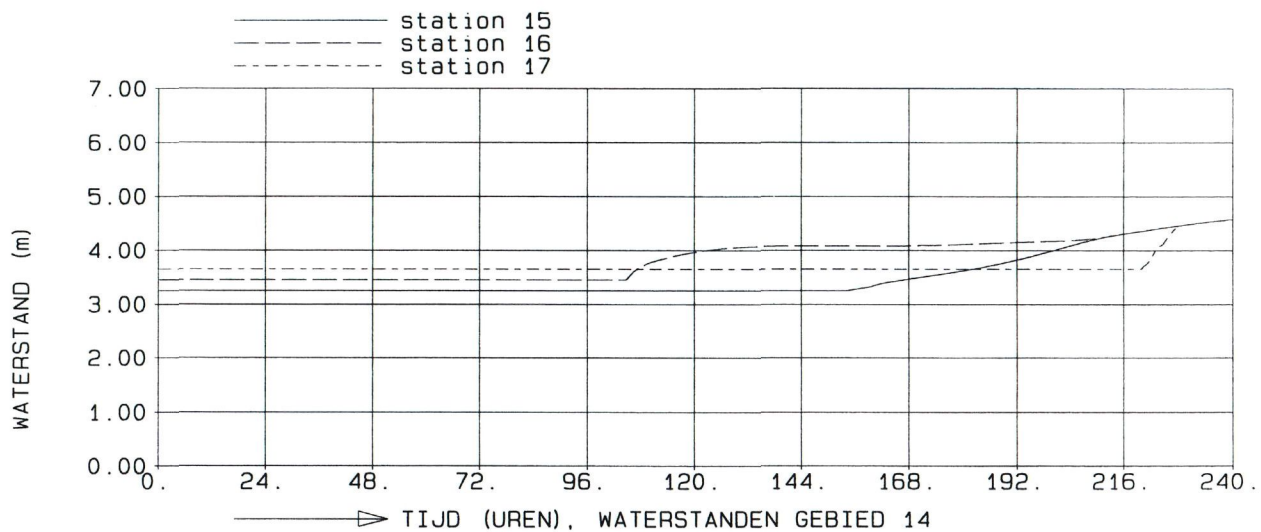
OPC = th7

DELFT HYDRAULICS

Z993

FIG4.6.1





DX=100 M, DIEPTE=t13, ZETA0=-2.0 M, AANTAL OPEN RANDEN=4  
 TIJDSTAP=20.00 S  
 WATERSTANDEN GEBIEDEN 14, 16 EN 17  
 DOORBRAAK HEESSELT, ZONDER DALEMSE OVERLATEN

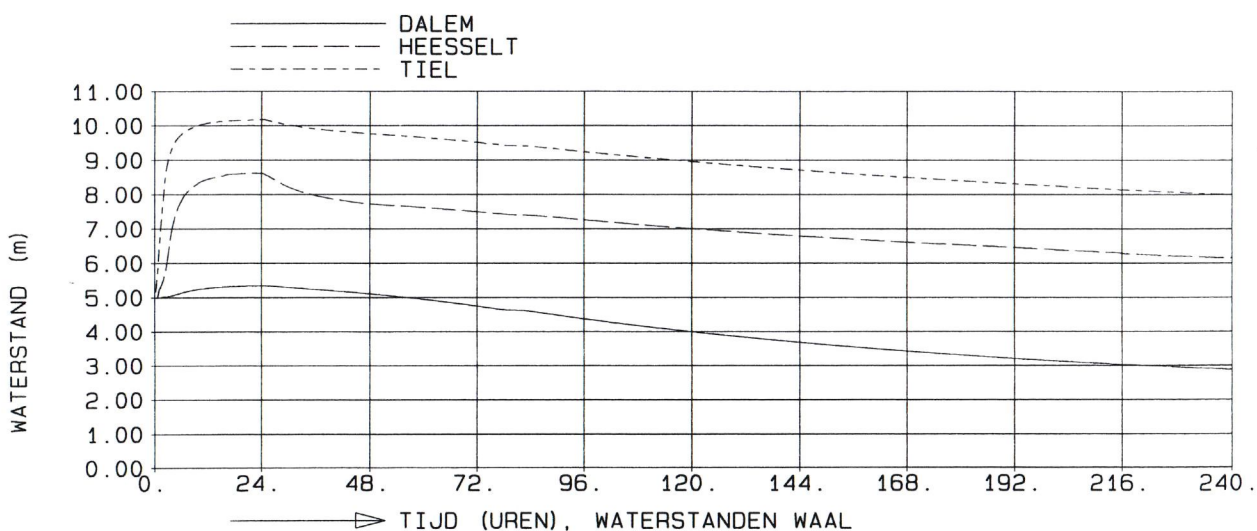
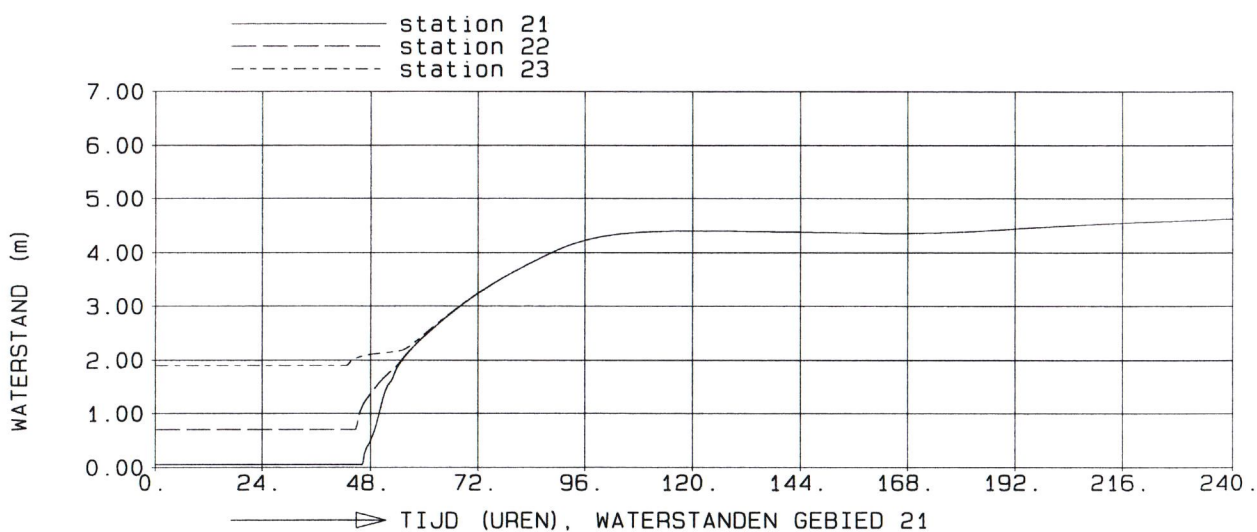
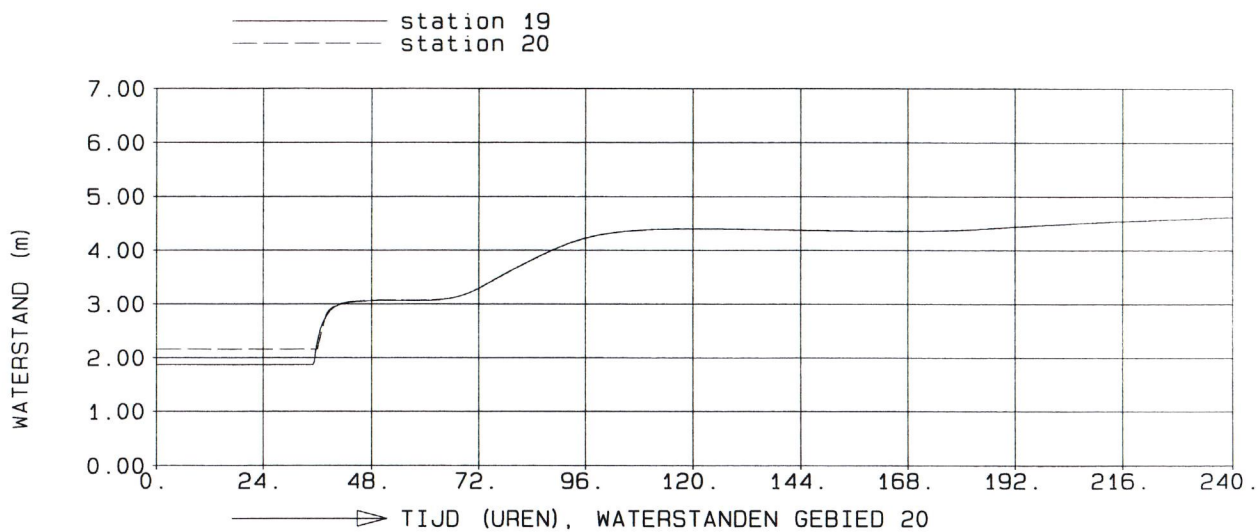
03.09.97

OPC = th7

DELFT HYDRAULICS

Z993

FIG4.6.2



DX=100 M, DIEPTE=t13, ZETA0=-2.0 M, AANTAL OPEN RANDEN=4  
 TIJDSTAP=20.00 S  
 WATERSTANDEN GEBIEDEN 20, 21 EN WAAL  
 DOORBRAAK HEESSELT, ZONDER DALEMSE OVERLATEN

03.09.97

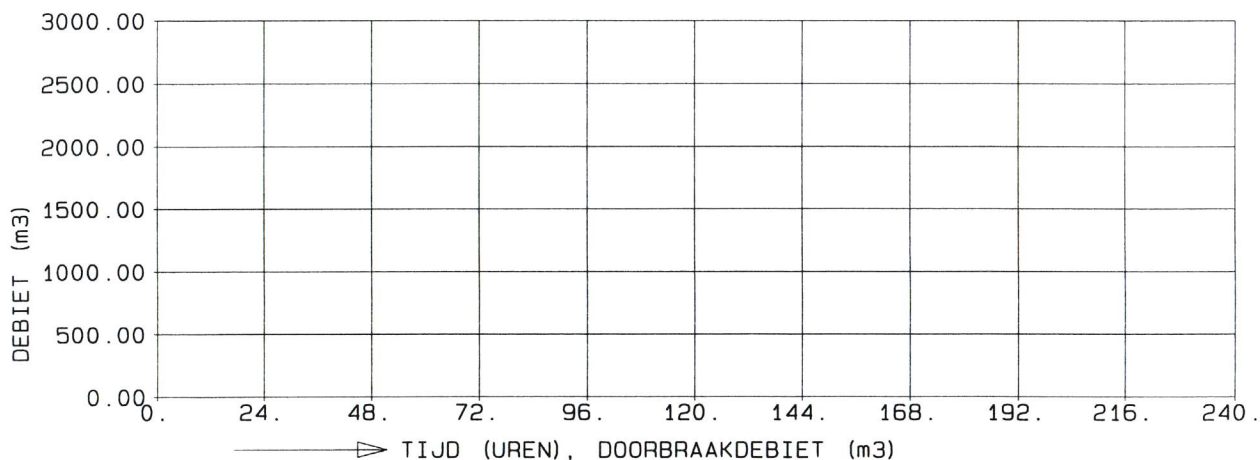
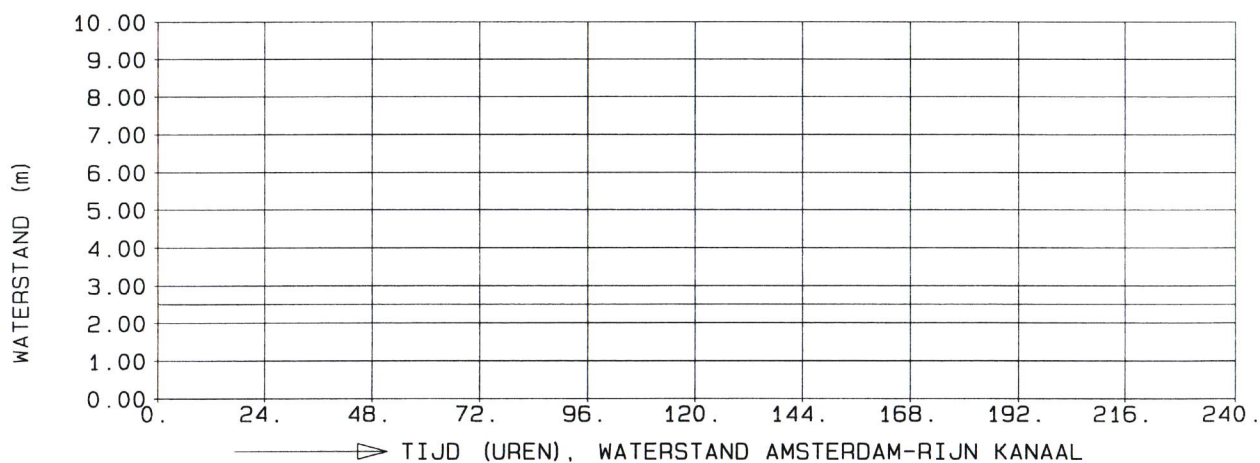
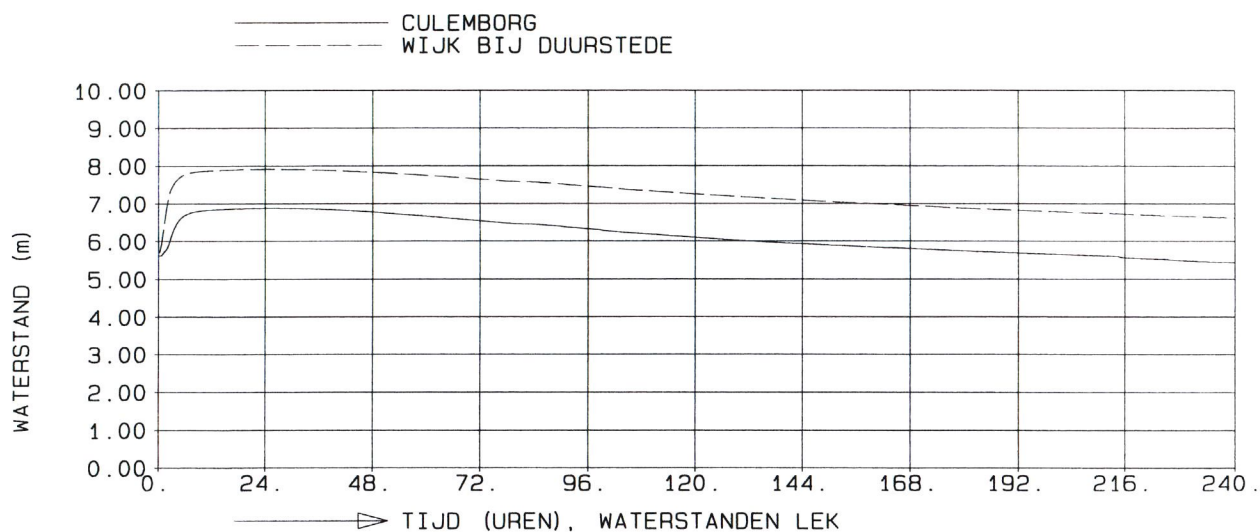
OPC = th7

DELFT HYDRAULICS

Z993

FIG4.6.3





DX=100 M, DIEPTE=t13, ZETA0=-2.0 M, AANTAL OPEN RANDEN=4  
 TIJDSTAP=20.00 S  
 WATERSTANDEN LEK, A-R KANAAL EN DOORBRAAKDEBIET  
 DOORBRAAK HEESSELT, ZONDER DALEMSE OVERLATEN

03.09.97

OPC = th7

DELFT HYDRAULICS

Z993

FIG4.6.4

**B I D O C**  
(bibliotheek en documentatie)



Dienst Weg- en Waterbouwkunde  
Van der Burghweg 1  
Postbus 5044, 2600 GA DELFT  
Tel. 015 - 26 99 363 / 364





• Delft

watermanagementlaboratorium | wl

Rotterdamseweg 185  
postbus 177  
2600 MH Delft  
telefoon 015 285 85 85  
telefax 015 285 85 82  
telex 38176 hydel-nl  
e-mail [info@wldelft.nl](mailto:info@wldelft.nl)  
internet [www.wldelft.nl](http://www.wldelft.nl)

