

## Kite-diagrammen

Bijlage 1 bij rapport T0017-4a  
Biomonitoring van fytoplankton in de Nederlandse zoute  
en brakke wateren  
1999



C-5292 831 1999  
Bijl. 1

## Kite-diagrammen

Bijlage 1 bij rapport T0017-4a  
Biomonitoring van fytoplankton in de Nederlandse zoute  
en brakke wateren  
1999

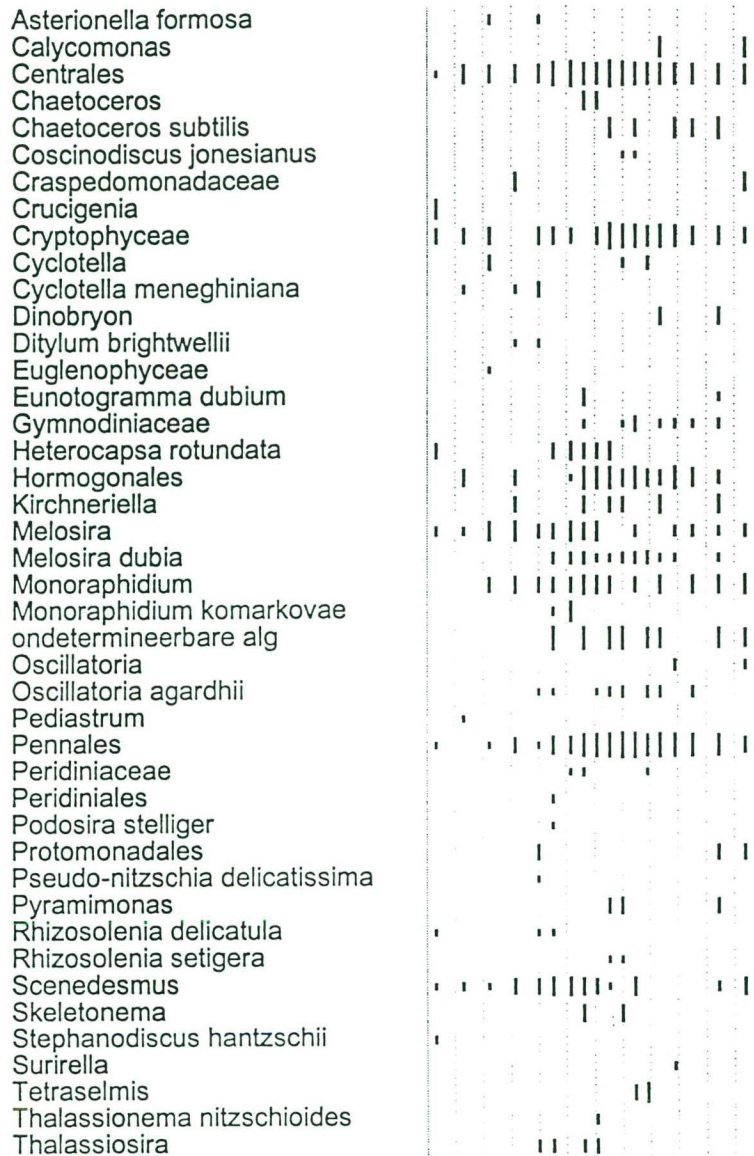


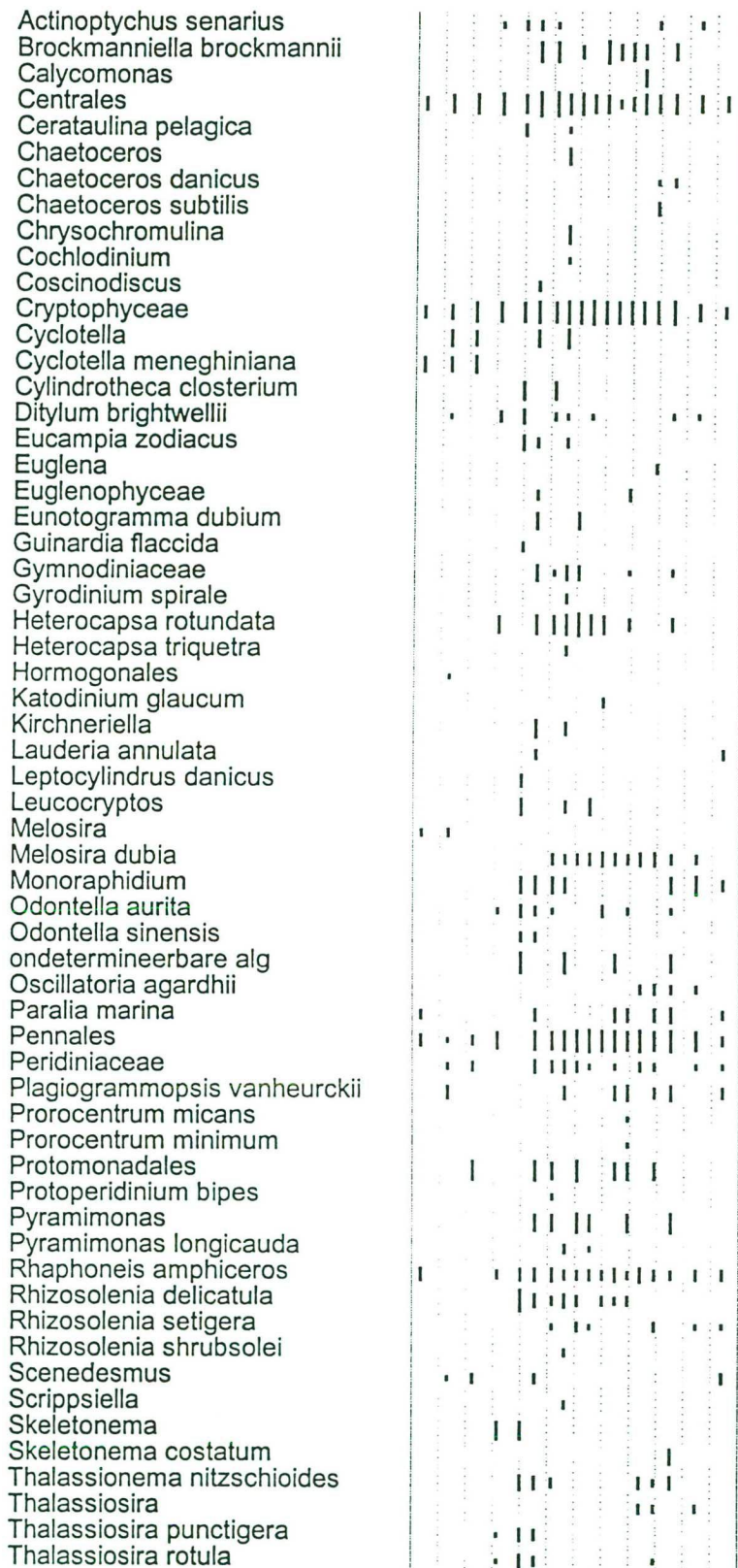
In deze bijlage zijn zogenaamde Kite-diagrammen gegeven, waarin per station het aantalsverloop over de monsterperiode staat weergegeven van de waargenomen soorten. De monsterperiode staat aan de bovenzijde van de diagrammen aangegeven als 1999 met daaronder de beginletters van de afzonderlijke maanden. De berekende aantallen cellen/l zijn ondergebracht in grootteklassen, weergegeven als zwarte staafjes van verschillende hoogte (zie de legenda bij de afzonderlijke diagrammen).

De naamgeving en de volgorde van de stations zijn dezelfde als die in het rapport; in de gevallen waar dieptemonsters voorhanden zijn wordt de stationsnaam gevolgd door aanduiding; oppervlakte, spronglaag of bodem.

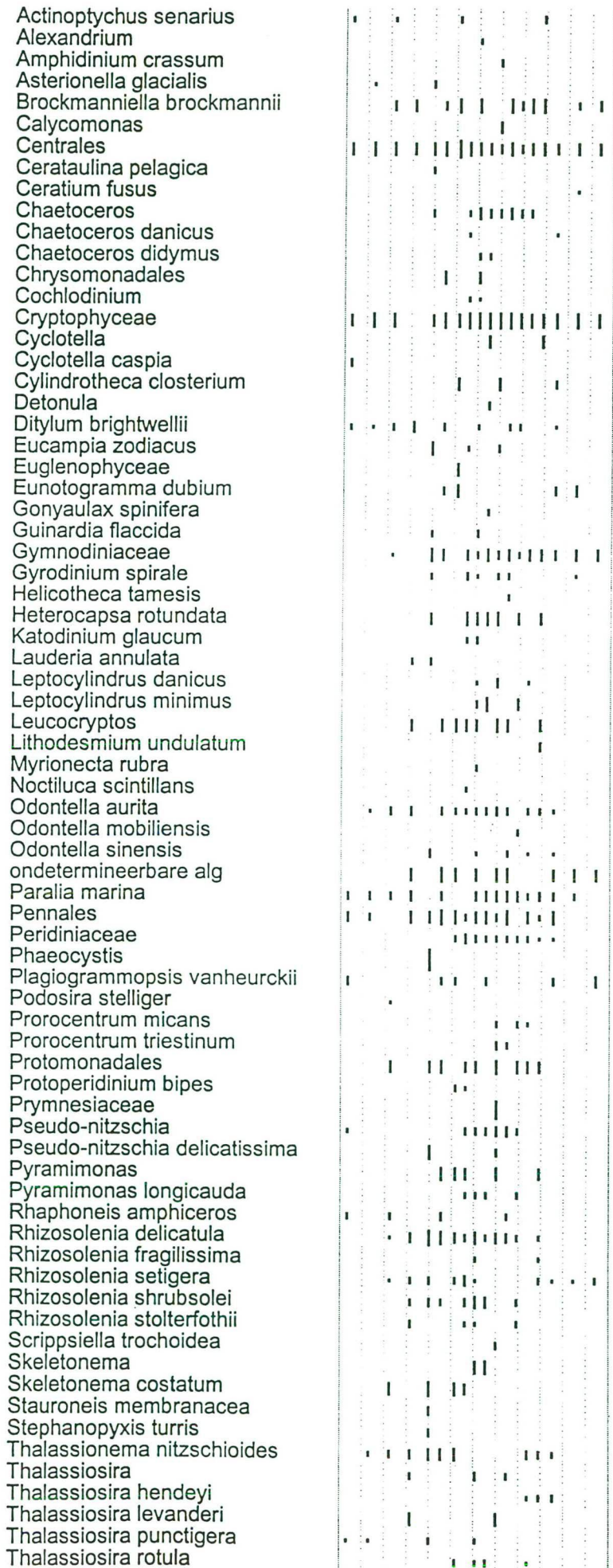


J F M A M J J A S O N D





- 100, ■ 1000, ■ 10000, ■ 100000, ■ 1000000 n/l





westerschelde 160

1999

J F M A M J J A S O N D

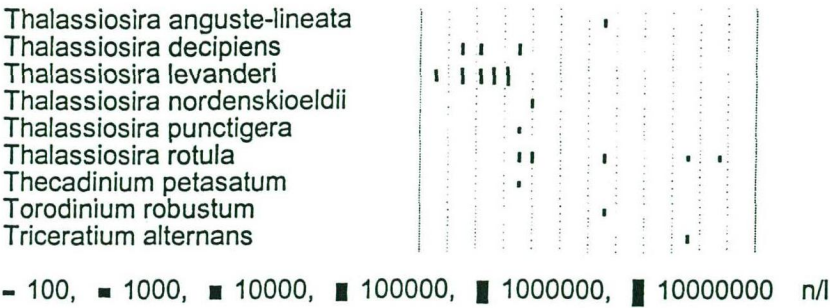
Torodinium robustum  
Triceratium alternans



- 100, ■ 1000, ■ 10000, ■ 100000, ■ 1000000, ■ 10000000 n/l



J F M A M J J A S O N D





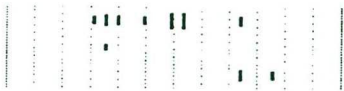


oosterschelde 40

1999

J F M A M J J A S O N D

Thalassiosira rotula  
Thecadinium petasatum  
Triceratium alternans



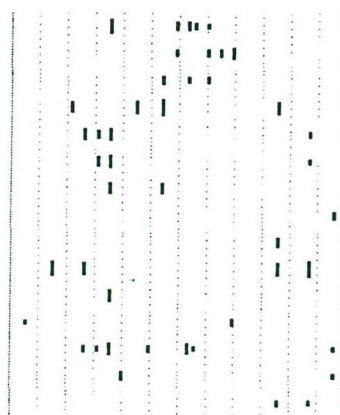
- 100, ■ 1000, ■ 10000, ■ 100000, ■ 1000000, ■ 10000000 n/l



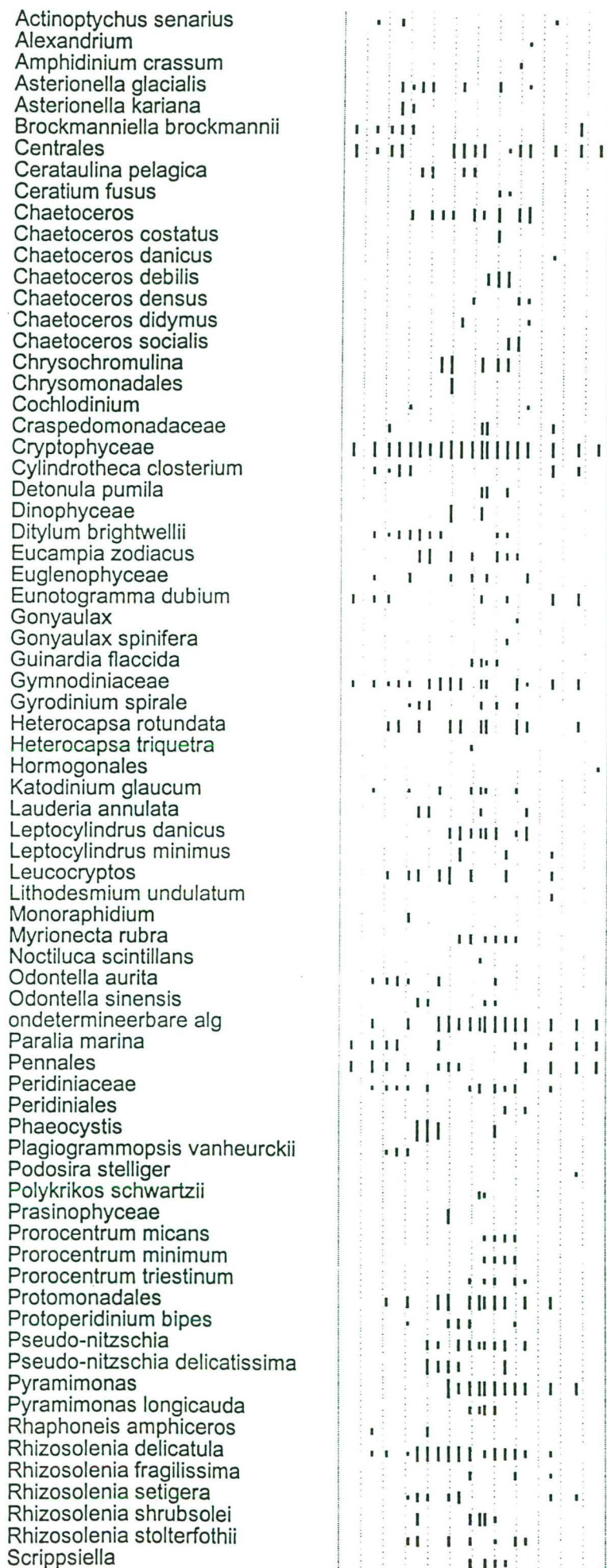


J F M A M J J A S O N D

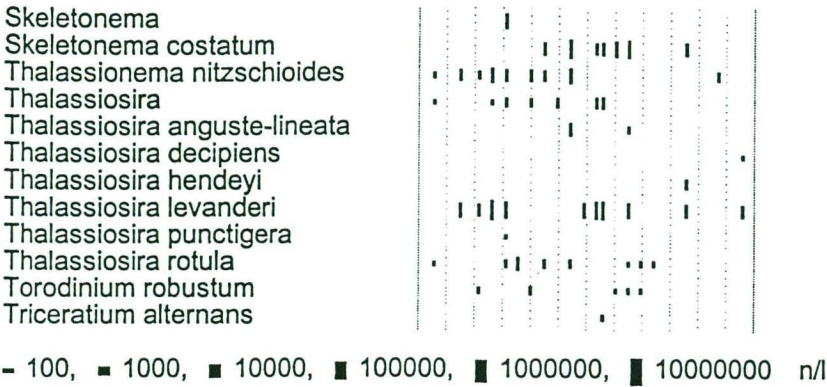
*Rhizosolenia shrubsolei*  
*Rhizosolenia stolterfothii*  
*Scrippsiella*  
*Skeletonema costatum*  
*Thalassionema nitzschioides*  
*Thalassiosira*  
*Thalassiosira anguste-lineata*  
*Thalassiosira decipiens*  
*Thalassiosira hendeyi*  
*Thalassiosira levanderi*  
*Thalassiosira nordenskiöldii*  
*Thalassiosira punctigera*  
*Thalassiosira rotula*  
*Torodinium robustum*  
*Triceratium alternans*



- 100, ■ 1000, ■ 10000, ■ 100000, ■ 1000000, ■ 10000000 n/l



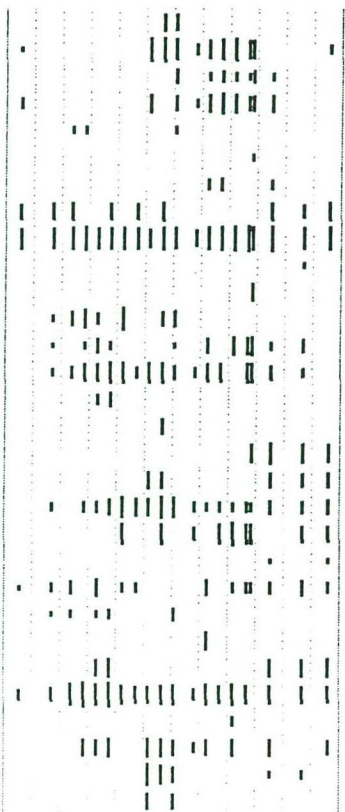
J F M A M J J A S O N D



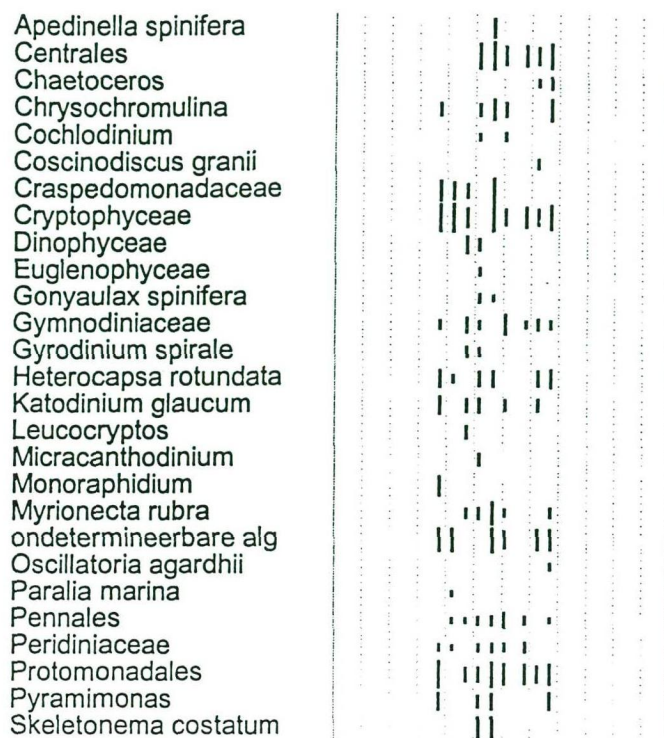


J F M A M J J A S O N D

Apedinella spinifera  
Centrales  
Chaetoceros  
Chrysochromulina  
Cochlodinium  
Coscinodiscus  
Coscinodiscus granii  
Craspedomonadaceae  
Cryptophyceae  
Cyclotella  
Cylindrotheca closterium  
Euglenophyceae  
Gymnodiniaceae  
Heterocapsa rotundata  
Heterocapsa triquetra  
Kirchneriella  
Leucocryptos  
Monoraphidium  
Myrionecta rubra  
ondetermineerbare alg  
Oscillatoria agardhii  
Pennales  
Peridiniaceae  
Phaeocystis  
Prasinophyceae  
Protomonadales  
Pseudo-nitzschia  
Pyramimonas  
Skeletonema costatum  
Tetraselmis

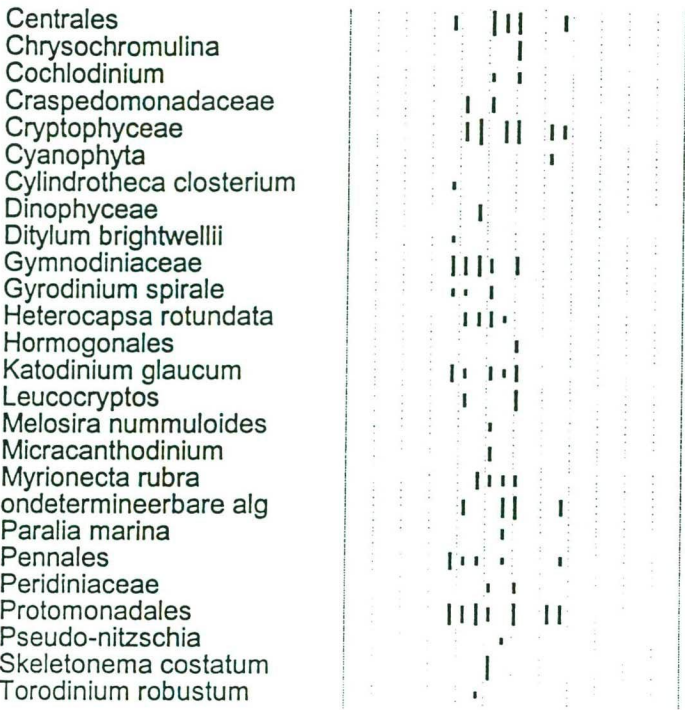


- 100, ■ 1000, ■ 10000, ■ 100000, ■ 1000000, ■ 10000000 n/l

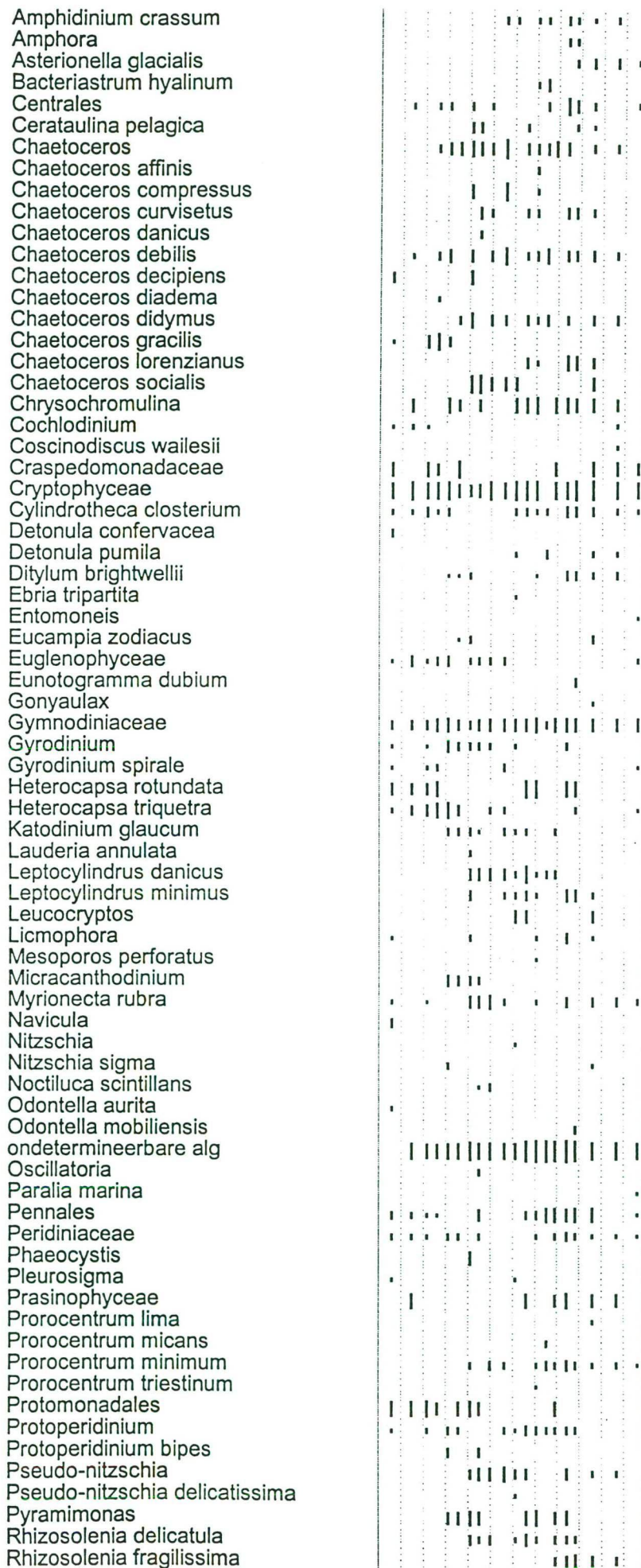


- 100, ■ 1000, ■ 10000, ■ 100000, ■ 1000000 n/l

J F M A M J J A S O N D



- 100, ■ 1000, ■ 10000, ■ 100000, ■ 1000000 n/l



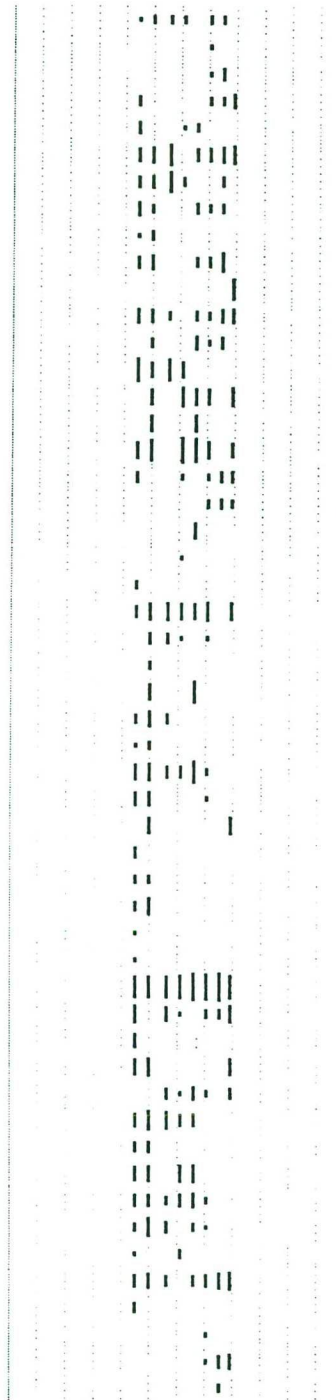


Rhizosolenia hebetata f. semispina  
 Rhizosolenia setigera  
 Rhizosolenia shrubsolei  
 Rhizosolenia stolterfothii  
 Scrippsiella  
 Skeletonema costatum  
 Striatella unipunctata  
 Thalassionema nitzschioides  
 Thalassiosira  
 Thalassiosira anguste-lineata  
 Thalassiosira levanderi  
 Thalassiosira nordenskiöldii  
 Thalassiosira rotula  
 Thecadinium petasatum  
 Torodinium robustum  
 Warnowia



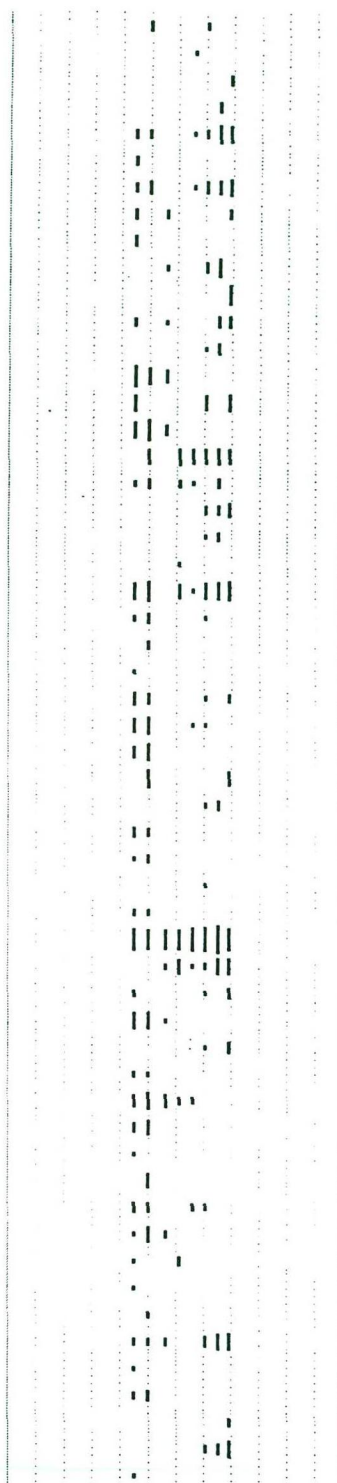
- 100, ■ 1000, ■ 10000, ■ 100000, ■ 1000000, ■ 10000000 n/l

Amphidinium crassum  
 Anabaena  
 Bacteriastrium hyalinum  
 Centrales  
 Cerataulina pelagica  
 Chaetoceros  
 Chaetoceros compressus  
 Chaetoceros curvisetus  
 Chaetoceros danicus  
 Chaetoceros debilis  
 Chaetoceros diadema  
 Chaetoceros didymus  
 Chaetoceros lorenzianus  
 Chaetoceros socialis  
 Chrysochromulina  
 Craspedomonadaceae  
 Cryptophyceae  
 Cylindrotheca closterium  
 Detonula pumila  
 Dinobryon faculiferum  
 Ebria tripartita  
 Euglenophyceae  
 Gymnodiniaceae  
 Gyrodinium  
 Gyrodinium spirale  
 Heterocapsa rotundata  
 Katodinium glaucum  
 Lauderia annulata  
 Leptocylindrus danicus  
 Leptocylindrus minimus  
 Leucocryptos  
 Licmophora  
 Micracanthodinium  
 Myrionecta rubra  
 Noctiluca scintillans  
 Odontella obtusa  
 ondetetermineerbare alg  
 Pennales  
 Peridiniaceae  
 Protomonadales  
 Protoperidinium  
 Pseudo-nitzschia  
 Pseudo-nitzschia delicatissima  
 Pyramimonas  
 Rhizosolenia delicatula  
 Rhizosolenia setigera  
 Rhizosolenia shrubsolei  
 Skeletonema costatum  
 Striatella unipunctata  
 Thalassiosira punctigera  
 Thalassiosira rotula  
 Thecadinium petasatum

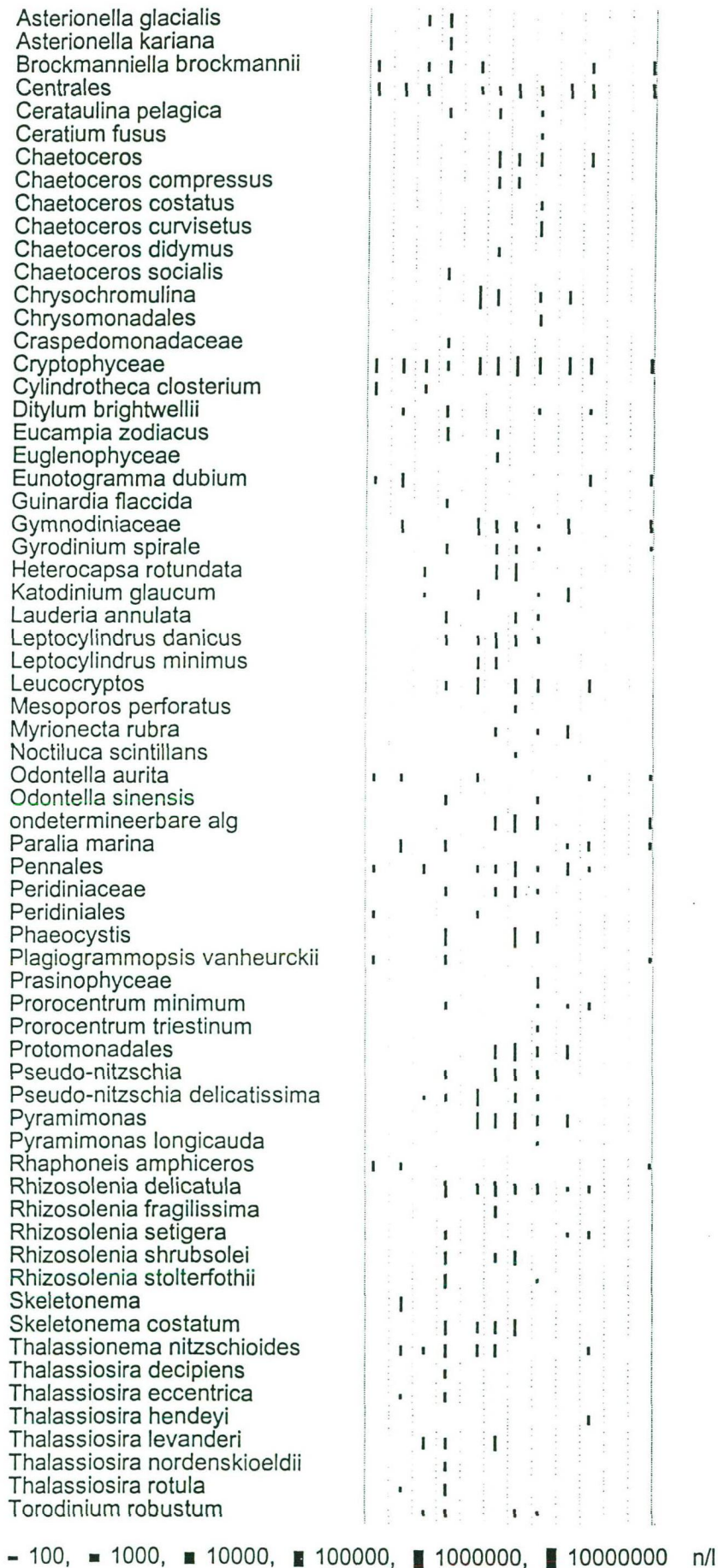


- 100, ■ 1000, ■ 10000, ■ 100000, ■ 1000000, ■ 10000000 n/l

Amphidinium crassum  
 Amphora  
 Asterionella glacialis  
 Bacteriastrum hyalinum  
 Centrales  
 Cerataulina pelagica  
 Chaetoceros  
 Chaetoceros compressus  
 Chaetoceros curvisetus  
 Chaetoceros debilis  
 Chaetoceros diadema  
 Chaetoceros didymus  
 Chaetoceros lorenzianus  
 Chaetoceros socialis  
 Chrysochromulina  
 Craspedomonadaceae  
 Cryptophyceae  
 Cylindrotheca closterium  
 Detonula pumila  
 Ditylum brightwellii  
 Ebria tripartita  
 Gymnodiniaceae  
 Gyrodinium  
 Gyrodinium spirale  
 Hormogonales  
 Katodinium glaucum  
 Leptocylindrus danicus  
 Leptocylindrus minimus  
 Leucocryptos  
 Licmophora  
 Micracanthodinium  
 Myrionecta rubra  
 Nitzschia sigma  
 Noctiluca scintillans  
 onbepaalde alg  
 Pennales  
 Peridiniaceae  
 Protomonadales  
 Protoperidinium  
 Protoperidinium bipes  
 Pseudo-nitzschia  
 Pseudo-nitzschia delicatissima  
 Pterosperma  
 Pyramimonas  
 Rhizosolenia delicatula  
 Rhizosolenia setigera  
 Rhizosolenia shrubsolei  
 Rhizosolenia stolterfothii  
 Scrippsiella  
 Skeletonema costatum  
 Striatella unipunctata  
 Thalassionema nitzschioides  
 Thalassiosira punctigera  
 Thalassiosira rotula  
 Torodinium robustum



- 100, ■ 1000, ■ 10000, ■ 100000, ■ 1000000, ■ 10000000 n/l





Actinoptychus senarius	.	.	.	.	.	.	.	.	.	.	.
Amphidinium crassum	.	.	.	.	.	.	.	.	.	.	.
Asterionella glacialis	.	.	.	.	.	.	.	.	.	.	.
Asterionella kariana	.	.	.	.	.	.	.	.	.	.	.
Brockmanniella brockmannii	.	.	.	.	.	.	.	.	.	.	.
Centrales	.	.	.	.	.	.	.	.	.	.	.
Cerataulina pelagica	.	.	.	.	.	.	.	.	.	.	.
Ceratium fusus	.	.	.	.	.	.	.	.	.	.	.
Chaetoceros	.	.	.	.	.	.	.	.	.	.	.
Chaetoceros debilis	.	.	.	.	.	.	.	.	.	.	.
Chaetoceros socialis	.	.	.	.	.	.	.	.	.	.	.
Chaetoceros subtilis	.	.	.	.	.	.	.	.	.	.	.
Chrysochromulina	.	.	.	.	.	.	.	.	.	.	.
Chrysomonadales	.	.	.	.	.	.	.	.	.	.	.
Cochlodinium	.	.	.	.	.	.	.	.	.	.	.
Craspedomonadaceae	.	.	.	.	.	.	.	.	.	.	.
Cryptophyceae	.	.	.	.	.	.	.	.	.	.	.
Cylindrotheca closterium	.	.	.	.	.	.	.	.	.	.	.
Detonula pumila	.	.	.	.	.	.	.	.	.	.	.
Dinophyceae	.	.	.	.	.	.	.	.	.	.	.
Ditylum brightwellii	.	.	.	.	.	.	.	.	.	.	.
Eucampia zodiacus	.	.	.	.	.	.	.	.	.	.	.
Euglenophyceae	.	.	.	.	.	.	.	.	.	.	.
Eunotogramma dubium	.	.	.	.	.	.	.	.	.	.	.
Guinardia flaccida	.	.	.	.	.	.	.	.	.	.	.
Gymnodiniaceae	.	.	.	.	.	.	.	.	.	.	.
Gyrodinium spirale	.	.	.	.	.	.	.	.	.	.	.
Helicotheca	.	.	.	.	.	.	.	.	.	.	.
Heterocapsa rotundata	.	.	.	.	.	.	.	.	.	.	.
Heterocapsa triquetra	.	.	.	.	.	.	.	.	.	.	.
Katodinium glaucum	.	.	.	.	.	.	.	.	.	.	.
Lauderia annulata	.	.	.	.	.	.	.	.	.	.	.
Leptocylindrus danicus	.	.	.	.	.	.	.	.	.	.	.
Leptocylindrus minimus	.	.	.	.	.	.	.	.	.	.	.
Leucocryptos	.	.	.	.	.	.	.	.	.	.	.
Monoraphidium	.	.	.	.	.	.	.	.	.	.	.
Myrionecta rubra	.	.	.	.	.	.	.	.	.	.	.
Noctiluca scintillans	.	.	.	.	.	.	.	.	.	.	.
Odontella aurita	.	.	.	.	.	.	.	.	.	.	.
Odontella sinensis	.	.	.	.	.	.	.	.	.	.	.
ondetermineerbare alg	.	.	.	.	.	.	.	.	.	.	.
Paralia marina	.	.	.	.	.	.	.	.	.	.	.
Pennales	.	.	.	.	.	.	.	.	.	.	.
Peridiniaceae	.	.	.	.	.	.	.	.	.	.	.
Peridinales	.	.	.	.	.	.	.	.	.	.	.
Phaeocystis	.	.	.	.	.	.	.	.	.	.	.
Plagiogrammopsis vanheurckii	.	.	.	.	.	.	.	.	.	.	.
Prorocentrum micans	.	.	.	.	.	.	.	.	.	.	.
Prorocentrum minimum	.	.	.	.	.	.	.	.	.	.	.
Protomonadales	.	.	.	.	.	.	.	.	.	.	.
Pseudo-nitzschia delicatissima	.	.	.	.	.	.	.	.	.	.	.
Pyramimonas	.	.	.	.	.	.	.	.	.	.	.
Pyramimonas longicauda	.	.	.	.	.	.	.	.	.	.	.
Rhaphoneis amphiceros	.	.	.	.	.	.	.	.	.	.	.
Rhizosolenia delicatula	.	.	.	.	.	.	.	.	.	.	.
Rhizosolenia fragilissima	.	.	.	.	.	.	.	.	.	.	.
Rhizosolenia robusta	.	.	.	.	.	.	.	.	.	.	.
Rhizosolenia setigera	.	.	.	.	.	.	.	.	.	.	.
Rhizosolenia shrubsolei	.	.	.	.	.	.	.	.	.	.	.
Rhizosolenia stolterfothii	.	.	.	.	.	.	.	.	.	.	.
Scrippsiella	.	.	.	.	.	.	.	.	.	.	.
Skeletonema costatum	.	.	.	.	.	.	.	.	.	.	.
Stauroneis membranacea	.	.	.	.	.	.	.	.	.	.	.
Stephanopyxis turris	.	.	.	.	.	.	.	.	.	.	.
Thalassionema nitzschioides	.	.	.	.	.	.	.	.	.	.	.
Thalassiosira	.	.	.	.	.	.	.	.	.	.	.
Thalassiosira anguste-lineata	.	.	.	.	.	.	.	.	.	.	.
Thalassiosira decipiens	.	.	.	.	.	.	.	.	.	.	.
Thalassiosira eccentrica	.	.	.	.	.	.	.	.	.	.	.
Thalassiosira fallax	.	.	.	.	.	.	.	.	.	.	.
Thalassiosira levanderi	.	.	.	.	.	.	.	.	.	.	.
Thalassiosira punctigera	.	.	.	.	.	.	.	.	.	.	.
Thalassiosira rotula	.	.	.	.	.	.	.	.	.	.	.

walcheren 20

1999

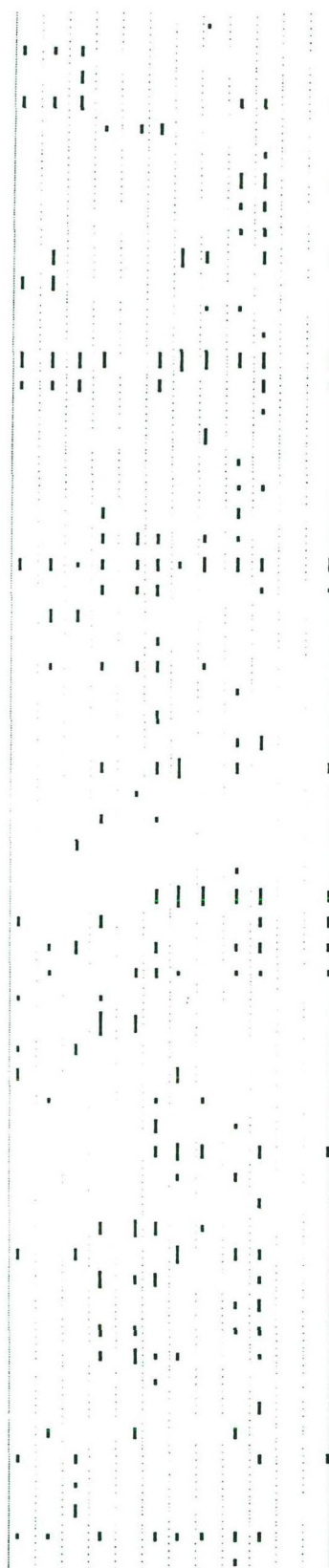
J F M A M J J A S O N D

Torodinium robustum  
Triceratium alternans



- 100, ■ 1000, ■ 10000, ■ 100000, ■ 1000000, ■ 10000000 n/l

Amphidinium crassum  
 Asterionella glacialis  
 Brockmanniella brockmannii  
 Centrales  
 Cerataulina pelagica  
 Ceratium fusus  
 Chaetoceros  
 Chaetoceros danicus  
 Chaetoceros eibenii  
 Chrysochromulina  
 Chrysomonadales  
 Cochlodinium  
 Coscinodiscus  
 Cryptophyceae  
 Cylindrotheca closterium  
 Dictyocha speculum  
 Dinophyceae  
 Dinophysis rotundata  
 Ditylum brightwellii  
 Eucampia zodiacus  
 Guinardia flaccida  
 Gymnodiniaceae  
 Gyrodinium spirale  
 Heterocapsa rotundata  
 Heterocapsa triquetra  
 Katodinium glaucum  
 Lauderia annulata  
 Leptocylindrus danicus  
 Leptocylindrus minimus  
 Leucocryptos  
 Mesoporos perforatus  
 Myrionecta rubra  
 Odontella aurita  
 Odontella sinensis  
 onetermineerbare alg  
 Paralia marina  
 Pennales  
 Peridiniaceae  
 Peridinales  
 Phaeocystis  
 Plagiogrammopsis vanheurckii  
 Prasinophyceae  
 Prorocentrum micans  
 Prorocentrum minimum  
 Protomonadales  
 Protoperidinium bipes  
 Pseudo-nitzschia  
 Pseudo-nitzschia delicatissima  
 Pyramimonas  
 Rhizosolenia delicatula  
 Rhizosolenia setigera  
 Rhizosolenia shrubsolei  
 Rhizosolenia stolterfothii  
 Scrippsiella  
 Skeletonema costatum  
 Stauroneis membranacea  
 Thalassionema nitzschioides  
 Thalassiosira eccentrica  
 Thalassiosira levanderi  
 Torodinium robustum  
 Triceratium alternans



- 100, ■ 1000, ■ 10000, ■ 100000, ■ 1000000, ■ 10000000 n/l



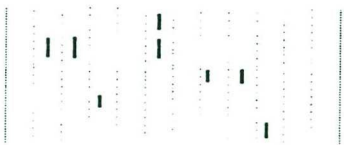
Amphidinium crassum  
 Asterionella glacialis  
 Asterionella kariana  
 Bacteriastrum hyalinum  
 Brockmanniella brockmannii  
 Centrales  
 Cerataulina pelagica  
 Ceratium fusus  
 Chaetoceros  
 Chaetoceros compressus  
 Chaetoceros danicus  
 Chaetoceros debilis  
 Chaetoceros didymus  
 Chaetoceros socialis  
 Chlorophyceae  
 Chrysochromulina  
 Coscinodiscus  
 Craspedomonadaceae  
 Cryptophyceae  
 Cylindrotheca closterium  
 Dinophyceae  
 Ditylum brightwellii  
 Eucampia zodiacus  
 Eunotogramma dubium  
 Gonyaulax spinifera  
 Guinardia flaccida  
 Gymnodiniaceae  
 Gyrodinium spirale  
 Heterocapsa rotundata  
 Heterocapsa triquetra  
 Katodinium glaucum  
 Lauderia annulata  
 Leptocylindrus danicus  
 Leptocylindrus minimus  
 Leucocryptos  
 Melosira  
 Monoraphidium  
 Myrionecta rubra  
 Odontella aurita  
 Odontella rhombus  
 Odontella sinensis  
 onetermineerbare alg  
 Oscillatoria agardhii  
 Paralia marina  
 Pennales  
 Peridiniaceae  
 Phaeocystis  
 Plagiogrammopsis vanheurckii  
 Polykrikos schwartzii  
 Prasinophyceae  
 Prorocentrum minimum  
 Protomonadales  
 Protoperidinium bipes  
 Pseudo-nitzschia  
 Pseudo-nitzschia delicatissima  
 Pyramimonas  
 Pyramimonas longicauda  
 Rhaphoneis amphiceros  
 Rhizosolenia delicatula  
 Rhizosolenia fragilissima  
 Rhizosolenia setigera  
 Rhizosolenia shrubsolei  
 Rhizosolenia stolterfothii  
 Scenedesmus  
 Scrippsiella  
 Skeletonema  
 Skeletonema costatum  
 Stauroneis membranacea  
 Stephanopyxis turris  
 Thalassionema nitzschioides  
 Thalassiosira  
 Thalassiosira angulata  
 Thalassiosira decipiens





J F M A M J J A S O N D

Thalassiosira fallax  
Thalassiosira levanderi  
Thalassiosira rotula  
Torodinium robustum  
Triceratium alternans



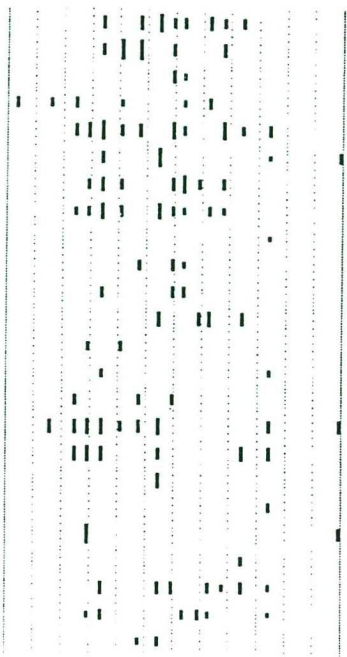
- 1, - 10, ■ 100, ■ 1000, ■ 10000, ■ 100000, ■ 1000000, ■ 10000000 n/l

Actinoptychus senarius  
 Amphidinium crassum  
 Asterionella glacialis  
 Asterionella kariana  
 Bacteriastrum hyalinum  
 Brockmanniella brockmannii  
 Cachonina niei  
 Centrales  
 Cerataulina pelagica  
 Ceratium fusus  
 Chaetoceros  
 Chaetoceros debilis  
 Chaetoceros decipiens  
 Chaetoceros densus  
 Chaetoceros didymus  
 Chaetoceros socialis  
 Chlorophyceae  
 Chrysomonadales  
 Coscinodiscus radiatus  
 Coscinodiscus wailesii  
 Craspedomonadaceae  
 Cryptophyceae  
 Cylindrotheca closterium  
 Detonula pumila  
 Dinophyceae  
 Dinophysis acuminata  
 Diplopsalis  
 Ditylum brightwellii  
 Ebria tripartita  
 Eucampia zodiacus  
 Eunotogramma dubium  
 Eutreptiaceae  
 Fibrocapsa japonica  
 Gonyaulax spinifera  
 Guinardia flaccida  
 Gymnodiniaceae  
 Gyrodinium spirale  
 Gyrosigma  
 Gyrosigma fasciola  
 Helicotheca tamesis  
 Heterocapsa minima  
 Heterocapsa rotundata  
 Heterocapsa triquetra  
 Katodinium glaucum  
 Lauderia annulata  
 Leptocylindrus danicus  
 Leptocylindrus minimus  
 Leucocryptos  
 Mesoporos perforatus  
 Micracanthodinium  
 Navicula distans  
 Nitzschia  
 Noctiluca scintillans  
 Odontella aurita  
 Odontella aurita var. minima  
 Odontella regia  
 Odontella rhombus  
 Odontella sinensis  
 ondetetermineerbare alg  
 Paralia marina  
 Pennales  
 Phaeocystis  
 Plagiogrammopsis vanheurckii  
 Podosira stelliger  
 Polykrikos schwartzii  
 Prorocentrum micans  
 Prorocentrum minimum  
 Prorocentrum triestinum  
 Protomonadales  
 Protoperidinium  
 Protoperidinium bipes  
 Protoperidinium claudicans  
 Protoperidinium denticulatum



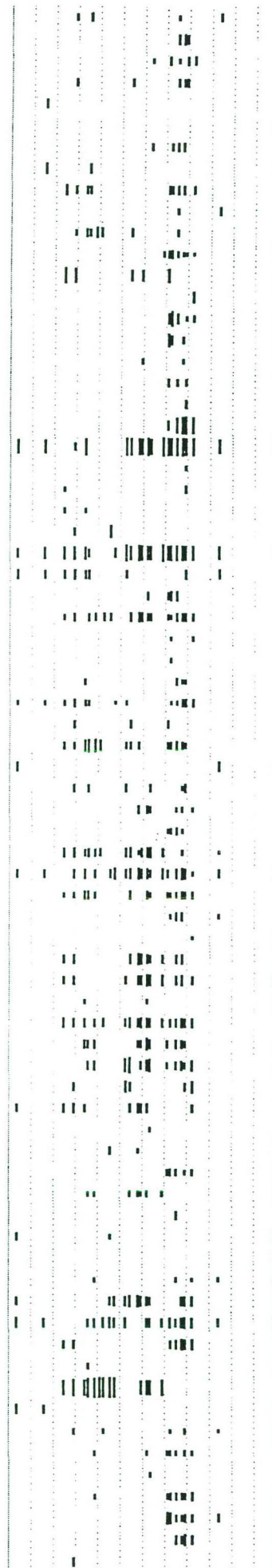
J F M A M J J A S O N D

Pseudo-nitzschia  
Pseudo-nitzschia delicatissima  
Pyramimonas longicauda  
Rhaphoneis amphiceros  
Rhizosolenia delicatula  
Rhizosolenia setigera  
Rhizosolenia shrubsolei  
Rhizosolenia stolterfothii  
Roperia tessellata  
Scenedesmus  
Scrippsiella  
Skeletonema costatum  
Stauroneis membranacea  
Stephanopyxis turris  
Tetraselmis  
Thalassionema nitzschioides  
Thalassiosira decipiens  
Thalassiosira fallax  
Thalassiosira hendeyi  
Thalassiosira levanderi  
Thalassiosira nordenskiöldii  
Thalassiosira rotula  
Torodinium robustum  
Triceratium alternans



- 10, - 100, ■ 1000, ■ 10000, ■ 100000, ■ 1000000, ■ 10000000, ■ 100000000

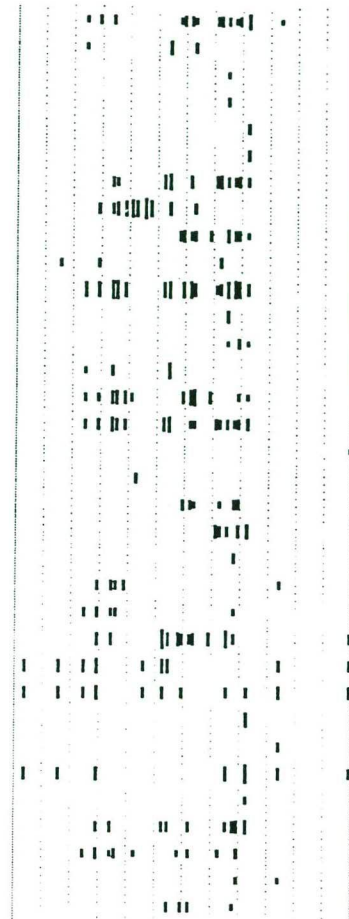
Actinoptychus senarius  
 Amphidinium  
 Amphidinium crassum  
 Asterionella glacialis  
 Asterionella kariana  
 Aulacoseira granulata  
 Bacteriastrum hyalinum  
 Brockmanniella brockmannii  
 Cachonina niei  
 Centrales  
 Cerataulina pelagica  
 Ceratium fusus  
 Chaetoceros  
 Chaetoceros curvisetus  
 Chaetoceros debilis  
 Chaetoceros decipiens  
 Chaetoceros densus  
 Chaetoceros didymus  
 Chaetoceros lauderi  
 Chaetoceros socialis  
 Chrysomonadales  
 Coscinodiscus granii  
 Coscinodiscus radiatus  
 Coscinodiscus wailesii  
 Craspedomonadaceae  
 Cryptophyceae  
 Cylindrotheca closterium  
 Detonula pumila  
 Dinophyceae  
 Dinophysis acuminata  
 Dinophysis rotundata  
 Diplopsalis  
 Ditylum brightwellii  
 Ebria tripartita  
 Eucampia zodiacus  
 Eunotogramma dubium  
 Eutreptiaceae  
 Fibrocapsa japonica  
 Gonyaulax spinifera  
 Guinardia flaccida  
 Gymnodiniaceae  
 Gyrodinium spirale  
 Gyrosigma  
 Gyrosigma fasciola  
 Heterocapsa minima  
 Heterocapsa rotundata  
 Heterocapsa triquetra  
 Katodinium glaucum  
 Lauderia annulata  
 Leptocylindrus danicus  
 Leptocylindrus minimus  
 Leucocryptos  
 Mesoporos perforatus  
 Micracanthodinium  
 Navicula distans  
 Noctiluca scintillans  
 Odontella aurita  
 Odontella aurita var. minima  
 Odontella rhombus  
 Odontella sinensis  
 onbepaalde alg  
 Paralia marina  
 Pennales  
 Peridiniaceae  
 Phaeocystis  
 Plagiogrammopsis vanheurckii  
 Podosira stelliger  
 Polykrikos schwartzii  
 Prorocentrum balticum  
 Prorocentrum micans  
 Prorocentrum minimum  
 Prorocentrum triestinum  
 Protomonadales





J F M A M J J A S O N D

Protoperidinium  
 Protoperidinium bipes  
 Protoperidinium depressum  
 Protoperidinium divergens  
 Protoperidinium pellucidum  
 Protoperidinium steinii  
 Pseudo-nitzschia  
 Pseudo-nitzschia delicatissima  
 Pyramimonas longicauda  
 Rhaphoneis amphiceros  
 Rhizosolenia delicatula  
 Rhizosolenia fragilissima  
 Rhizosolenia robusta  
 Rhizosolenia setigera  
 Rhizosolenia shrubsolei  
 Rhizosolenia stolterfothii  
 Roperia tessellata  
 Scenedesmus  
 Scrippsiella  
 Skeletonema costatum  
 Spatulodinium pseudonociluca  
 Stauroneis membranacea  
 Stephanopyxis turris  
 Tetraselmis  
 Thalassionema nitzschioides  
 Thalassiosira decipiens  
 Thalassiosira fallax  
 Thalassiosira hendeyi  
 Thalassiosira levanderi  
 Thalassiosira punctigera  
 Thalassiosira rotula  
 Torodinium robustum  
 Triceratium alternans  
 Warnowia

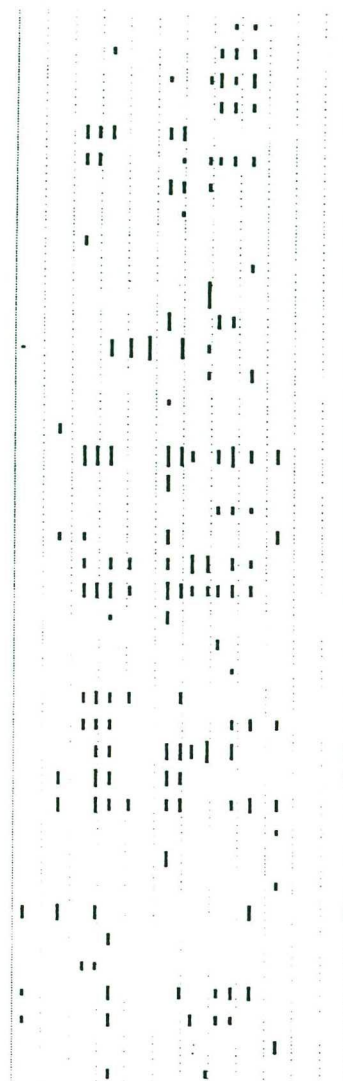


- 10, - 100, ■ 1000, ■ 10000, ■ 100000, ■ 1000000, ■ 10000000, ■ 100000000

Actinoptychus senarius  
 Amphidinium  
 Amphidinium crassum  
 Asterionella glacialis  
 Asterionella kariana  
 Bacteriastrium hyalinum  
 Brockmanniella brockmannii  
 Cachonina niei  
 Cerataulina pelagica  
 Ceratium fusus  
 Ceratium horridum  
 Chaetoceros  
 Chaetoceros curvisetus  
 Chaetoceros danicus  
 Chaetoceros debilis  
 Chaetoceros decipiens  
 Chaetoceros didymus  
 Chaetoceros eibonii  
 Chaetoceros lauderi  
 Chaetoceros socialis  
 Chaetoceros teres  
 Chlorophyceae  
 Chrysomonadales  
 Corymbellus aureus  
 Coscinodiscus concinnus  
 Coscinodiscus granii  
 Coscinodiscus radiatus  
 Coscinodiscus wailesii  
 Craspedomonadaceae  
 Cryptophyceae  
 Cyllindrotheca closterium  
 Detonula pumila  
 Dinophyceae  
 Dinophysis acuminata  
 Diploneis bombus  
 Diplopsalis  
 Ditylum brightwellii  
 Ebria tripartita  
 Eucampia zodiacus  
 Euglenophyceae  
 Eunotogramma dubium  
 Eutreptiaceae  
 Fibrocapsa japonica  
 Gonyaulax spinifera  
 Guinardia flaccida  
 Gymnodiniaceae  
 Gymnodinium mikimotoi  
 Gyrodinium spirale  
 Gyrosigma  
 Gyrosigma fasciola  
 Helicotheca tamesis  
 Heterocapsa minima  
 Heterocapsa rotundata  
 Heterocapsa triquetra  
 Hormogonales  
 Katodinium glaucum  
 Lauderia annulata  
 Leptocylindrus danicus  
 Leptocylindrus minimus  
 Leucocryptos  
 Lithodesmium undulatum  
 Mesoporus perforatus  
 Navicula distans  
 Noctiluca scintillans  
 Odontella aurita var. minima  
 Odontella regia  
 Odontella rhombus  
 Odontella sinensis  
 ondetetermineerbare alg  
 Paralia marina  
 Pennales  
 Phaeocystis  
 Podosira stelliger



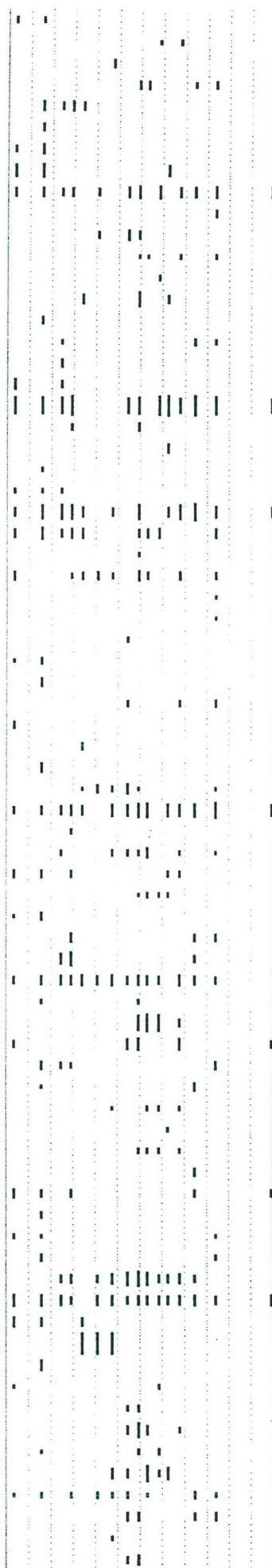
Polykrikos schwartzii  
 Prorocentrum micans  
 Prorocentrum minimum  
 Prorocentrum triestinum  
 Protomonadales  
 Protoperidinium  
 Protoperidinium bipes  
 Protoperidinium claudicans  
 Protoperidinium denticulatum  
 Protoperidinium excentricum  
 Prymnesiaceae  
 Pseudo-nitzschia  
 Pseudo-nitzschia delicatissima  
 Pyramimonas longicauda  
 Raphidophyceae  
 Rhaphoneis amphiceros  
 Rhizosolenia delicatula  
 Rhizosolenia fragilissima  
 Rhizosolenia robusta  
 Rhizosolenia setigera  
 Rhizosolenia shrubsolei  
 Rhizosolenia stolterfothii  
 Scrippsiella  
 Skeletonema costatum  
 Spatulodinium pseudonociluca  
 Stauroneis membranacea  
 Stephanopyxis turris  
 Tetraselmis  
 Thalassionema nitzschioides  
 Thalassiosira decipiens  
 Thalassiosira eccentrica  
 Thalassiosira fallax  
 Thalassiosira hendeyi  
 Thalassiosira levanderi  
 Thalassiosira nordenskiöldii  
 Thalassiosira punctigera  
 Thalassiosira rotula  
 Torodinium robustum  
 Triceratium alternans  
 Warnowia



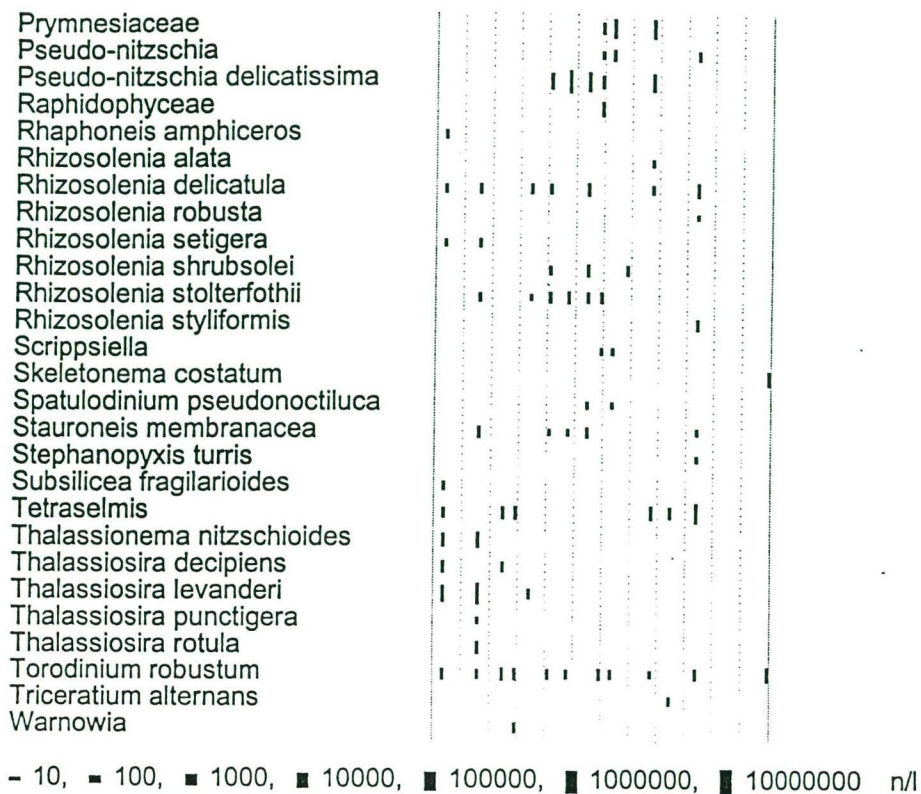
- 10, ■ 100, ■ 1000, ■ 10000, ■ 100000, ■ 1000000, ■ 10000000 n/l

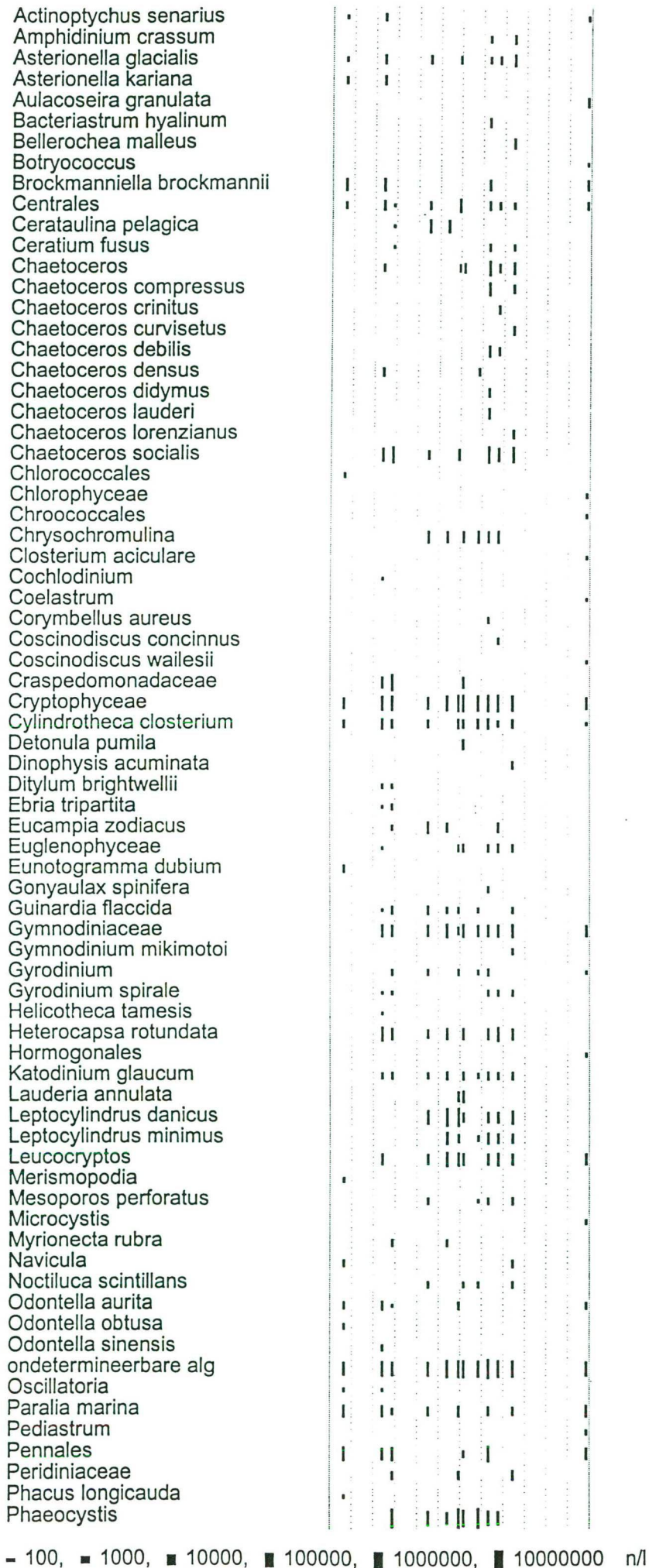


Actinoptychus senarius  
 Alexandrium  
 Amphidinium  
 Amphidinium crassum  
 Asterionella glacialis  
 Asterionella kariana  
 Bacillaria paxillifer  
 Brockmanniella brockmannii  
 Cachonina niei  
 Centrales  
 Cerataulina pelagica  
 Ceratium fusus  
 Ceratium lineatum  
 Chaetoceros  
 Chaetoceros danicus  
 Chaetoceros densus  
 Chattonella  
 Chlorophyceae  
 Chrysomonadales  
 Coccolithaceae  
 Corymbellus aureus  
 Coscinodiscus granii  
 Coscinodiscus radiatus  
 Cryptophyceae  
 Cylindrotheca closterium  
 Detonula pumila  
 Dinophyceae  
 Dinophysis acuminata  
 Dinophysis rotundata  
 Diplopsalis  
 Ditylum brightwellii  
 Entomoneis  
 Eucampia zodiacus  
 Eunotogramma dubium  
 Eutreptiaceae  
 Fragilaria  
 Guinardia flaccida  
 Gymnodiniaceae  
 Gymnodinium mikimotoi  
 Gyrodinium spirale  
 Gyrosigma  
 Gyrosigma fasciola  
 Helicotheca tamesis  
 Heterocapsa minima  
 Heterocapsa rotundata  
 Katodinium glaucum  
 Lauderia annulata  
 Leptocylindrus danicus  
 Leucocryptos  
 Mesoporos perforatus  
 Navicula  
 Navicula distans  
 Nitzschia  
 Noctiluca scintillans  
 Odontella aurita  
 Odontella aurita var. minima  
 Odontella regia  
 Odontella rhombus  
 Odontella sinensis  
 onbepaalde alg  
 Paralia marina  
 Pennales  
 Phaeocystis  
 Plagiogrammopsis vanheurckii  
 Podoceros stelliger  
 Polykrikos schwartzii  
 Prorocentrum balticum  
 Prorocentrum micans  
 Protomonadales  
 Protoperidinium  
 Protoperidinium bipes  
 Protoperidinium claudicans  
 Protoperidinium steinii

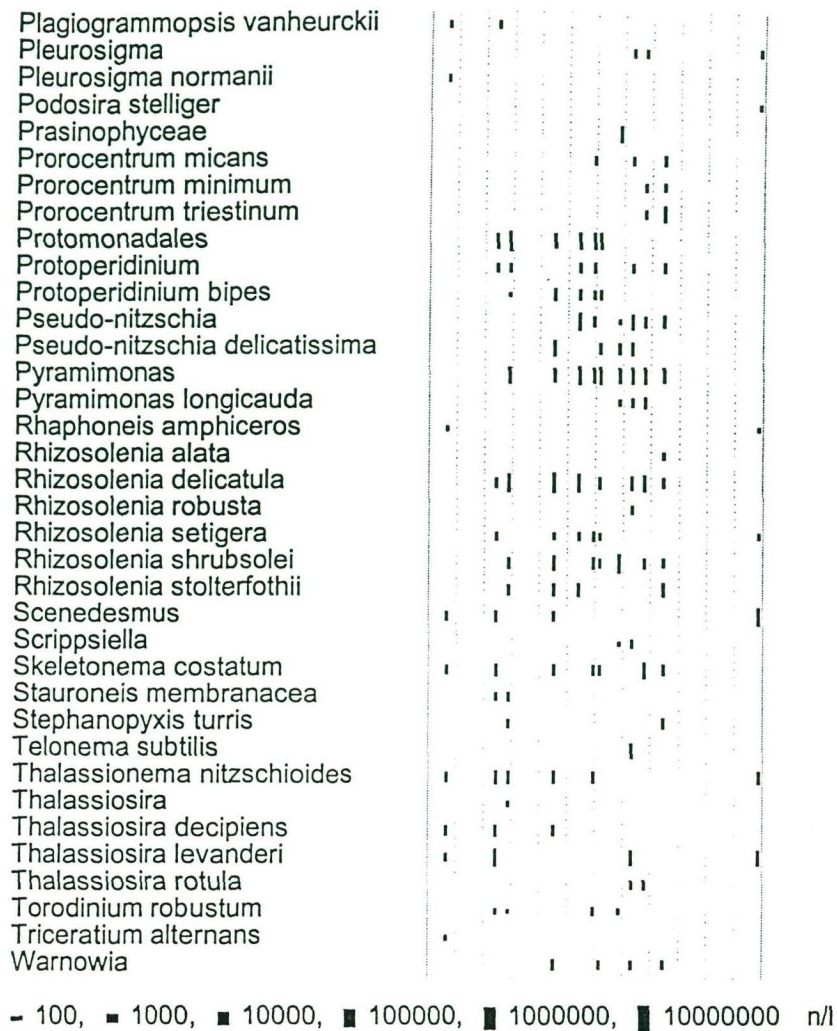






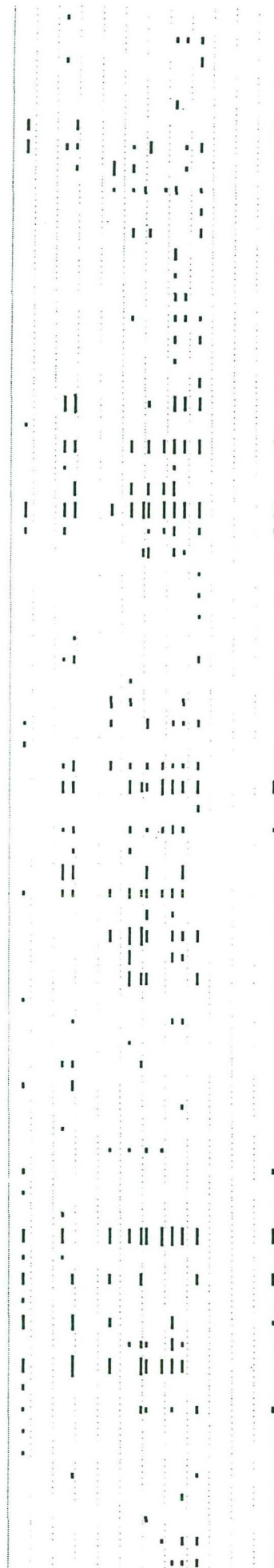


J F M A M J J A S O N D





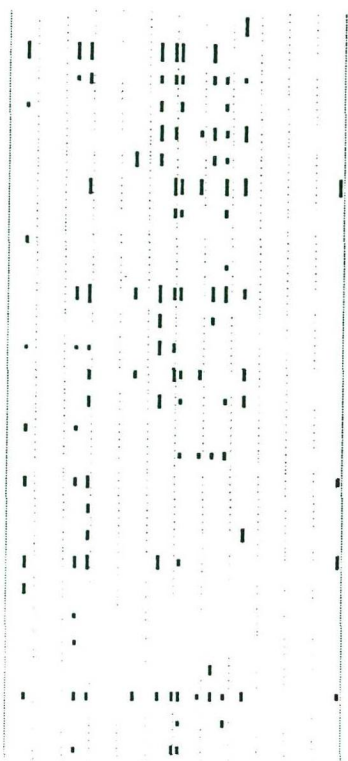
Actinoptychus senarius  
 Amphidinium crassum  
 Asterionella glacialis  
 Asterionella kariana  
 Bacteriastrum hyalinum  
 Brockmanniella brockmannii  
 Centrales  
 Cerataulina pelagica  
 Ceratium fusus  
 Ceratium horridum  
 Chaetoceros  
 Chaetoceros compressus  
 Chaetoceros curvisetus  
 Chaetoceros debilis  
 Chaetoceros densus  
 Chaetoceros didymus  
 Chaetoceros lauderi  
 Chaetoceros lorenzianus  
 Chaetoceros socialis  
 Chaetoceros subtilis  
 Chrysochromulina  
 Cochlodinium  
 Craspedomonadaceae  
 Cryptophyceae  
 Cylindrotheca closterium  
 Detonula pumila  
 Dinophysis  
 Dinophysis acuminata  
 Dinophysis rotundata  
 Dissodinium pseudolunula  
 Ditylum brightwellii  
 Ebria tripartita  
 Eucampia zodiacus  
 Euglenophyceae  
 Eunotogramma dubium  
 Guinardia flaccida  
 Gymnodiniaceae  
 Gymnodinium mikimotoi  
 Gyrodinium  
 Gyrodinium spirale  
 Heterocapsa rotundata  
 Katodinium glaucum  
 Lauderia annulata  
 Leptocylindrus danicus  
 Leptocylindrus minimus  
 Leucocryptos  
 Merismopodia  
 Mesoporos perforatus  
 Micracanthodinium  
 Myrionecta rubra  
 Navicula  
 Navicula distans  
 Nitzschia sigma  
 Noctiluca scintillans  
 Odontella aurita  
 Odontella regia  
 Odontella sinensis  
 ondetetermineerbare alg  
 Oscillatoria  
 Paralia marina  
 Pediatrion  
 Pennales  
 Peridiniaceae  
 Phaeocystis  
 Plagiogramopsis vanheurckii  
 Pleurosigma  
 Pleurosigma angulatum  
 Pleurosigma normanii  
 Podosira stelliger  
 Prorocentrum  
 Prorocentrum balticum  
 Prorocentrum micans  
 Prorocentrum minimum





J F M A M J J A S O N D

Prorocentrum triestinum  
Protomonadales  
Proto-peridinium  
Proto-peridinium bipes  
Pseudo-nitzschia  
Pseudo-nitzschia delicatissima  
Pyramimonas  
Pyramimonas longicauda  
Rhaphoneis amphiceros  
Rhizosolenia alata  
Rhizosolenia delicatula  
Rhizosolenia fragilissima  
Rhizosolenia setigera  
Rhizosolenia shrubsolei  
Rhizosolenia stolterfothii  
Scenedesmus  
Scrippsiella  
Skeletonema costatum  
Stauroneis membranacea  
Stephanopyxis turris  
Thalassionema nitzschioides  
Thalassiosira  
Thalassiosira levanderi  
Thalassiosira punctigera  
Thalassiosira rotula  
Torodinium robustum  
Triceratium alternans  
Warnowia



- 100, ■ 1000, ■ 10000, ■ 100000, ■ 1000000, ■ 10000000 n/l

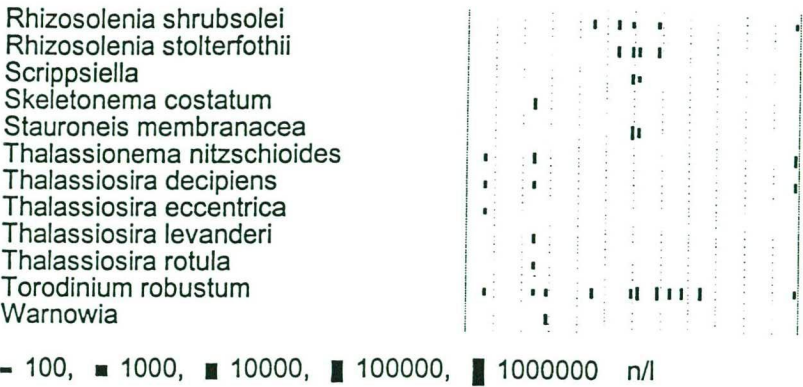
Amphidinium crassum  
 Asterionella glacialis  
 Bacillaria paxillifer  
 Brockmanniella brockmannii  
 Centrales  
 Cerataulina pelagica  
 Ceratium furca  
 Ceratium fusus  
 Ceratium horridum  
 Ceratium lineatum  
 Ceratium macroceros  
 Ceratium tripos  
 Chaetoceros  
 Chaetoceros borealis  
 Chaetoceros danicus  
 Chaetoceros debilis  
 Chaetoceros densus  
 Chaetoceros diadema  
 Chaetoceros socialis  
 Chattonella  
 Chrysochromulina  
 Chrysomonadales  
 Cochlodinium  
 Craspedomonadaceae  
 Cryptophyceae  
 Cyllindrotheca closterium  
 Dictyocha fibula  
 Dinophyceae  
 Dinophysis norvegica  
 Dinophysis rotundata  
 Dissodinium pseudolunula  
 Gonyaulax digitale  
 Gonyaulax spinifera  
 Guinardia flaccida  
 Gymnodiniaceae  
 Gymnodinium elongatum  
 Gyrodinium  
 Gyrodinium spirale  
 Helicotheca tamesis  
 Heterocapsa rotundata  
 Katodinium glaucum  
 Leptocylindrus danicus  
 Leptocylindrus minimus  
 Leucocryptos  
 Mesoporos perforatus  
 Myrionecta rubra  
 Navicula  
 Nitzschia sigma  
 onetermineerbare alg  
 Paralia marina  
 Pennales  
 Peridiniaceae  
 Phaeocystis  
 Pleurosigma  
 Podosira stelliger  
 Polykrikos schwartzii  
 Prasinophyceae  
 Prorocentrum compressum  
 Prorocentrum micans  
 Prorocentrum minimum  
 Protomonadales  
 Protoperidinium  
 Protoperidinium bipes  
 Pseudo-nitzschia  
 Pseudo-nitzschia delicatissima  
 Pterosperma  
 Pyramimonas  
 Rhaphoneis amphiceros  
 Rhizosolenia alata  
 Rhizosolenia delicatula  
 Rhizosolenia fragilissima  
 Rhizosolenia hebetata f. semispina  
 Rhizosolenia setigera

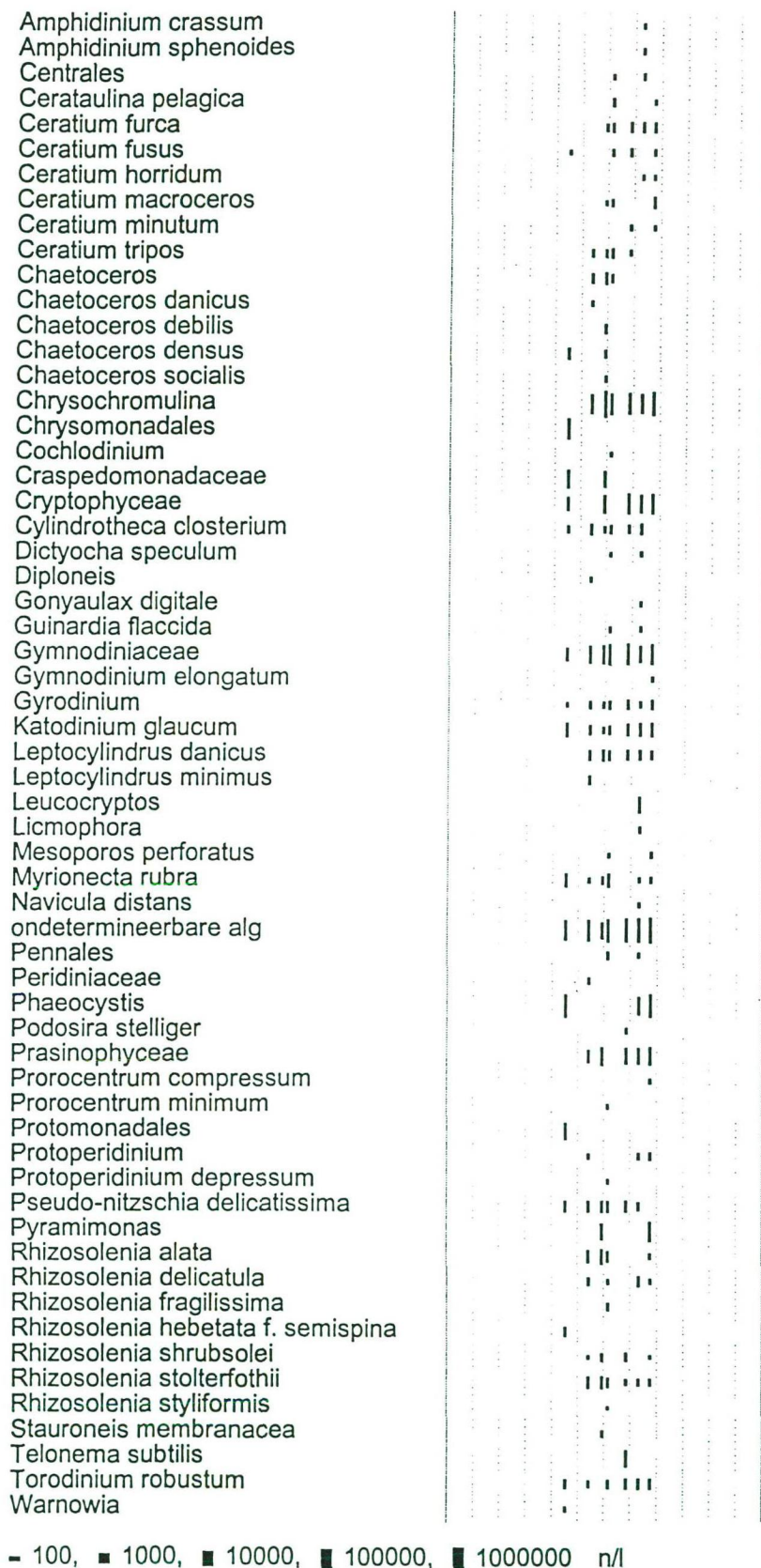


terschelling 100 oppervlakte

1999

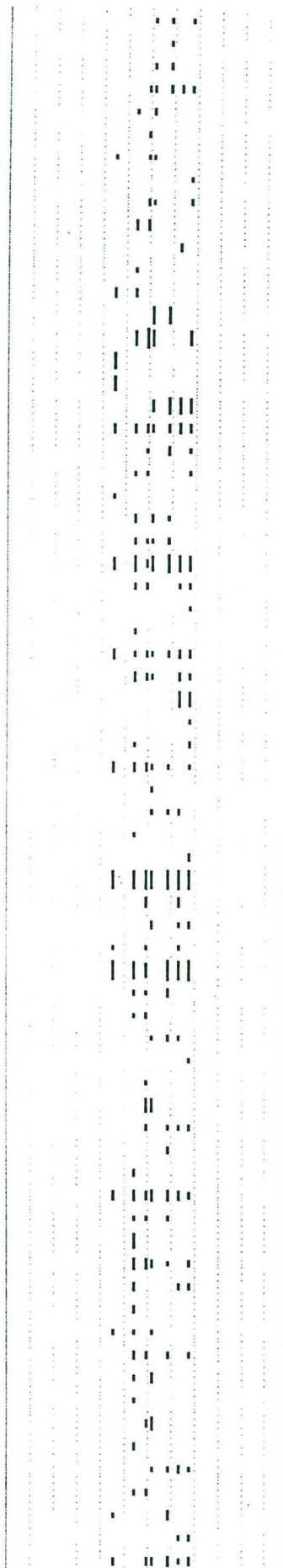
J F M A M J J A S O N D







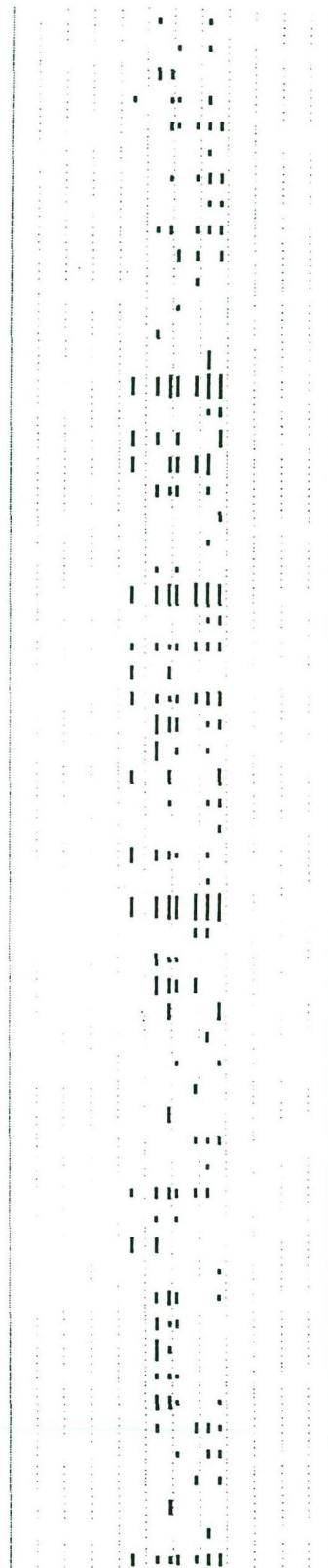
Actinoptychus senarius  
 Amphidinium crassum  
 Amphidinium sphenoides  
 Centrales  
 Cerataulina pelagica  
 Ceratium furca  
 Ceratium fusus  
 Ceratium macroceros  
 Ceratium tripos  
 Chaetoceros  
 Chaetoceros affinis  
 Chaetoceros danicus  
 Chaetoceros densus  
 Chaetoceros socialis  
 Chrysochromulina  
 Chrysomonadales  
 Craspedomonadaceae  
 Cryptophyceae  
 Cylindrotheca closterium  
 Dictyocha speculum  
 Dinophysis rotundata  
 Entomoneis  
 Eucampia zodiacus  
 Guinardia flaccida  
 Gymnodiniaceae  
 Gyrodinium  
 Gyrodinium calyptoglyphe  
 Gyrodinium spirale  
 Katodinium glaucum  
 Leptocylindrus danicus  
 Leucocryptos  
 Licmophora  
 Mesoporos perforatus  
 Myrionecta rubra  
 Navicula  
 Navicula distans  
 Nitzschia sigma  
 Odontella sinensis  
 ondetmineerbare alg  
 Paralia marina  
 Pennales  
 Peridiniaceae  
 Phaeocystis  
 Pleurosigma  
 Pleurosigma angulatum  
 Podosira stelliger  
 Prorocentrum micans  
 Prorocentrum minimum  
 Protomonadales  
 Protoperidinium  
 Protoperidinium bipes  
 Pseudo-nitzschia  
 Pseudo-nitzschia delicatissima  
 Pterosperma  
 Pyramimonas  
 Rhizosolenia alata  
 Rhizosolenia delicatula  
 Rhizosolenia fragilissima  
 Rhizosolenia hebetata f. semispina  
 Rhizosolenia shrubsolei  
 Rhizosolenia stolterfothii  
 Scrippsiella  
 Stauroneis membranacea  
 Stephanopyxis turris  
 Thalassionema nitzschioides  
 Thalassiosira decipiens  
 Thalassiosira delicatula  
 Thalassiosira eccentrica  
 Torodinium robustum



[illegible]

- 100, - 1000, - 10000, - 100000, - 1000000 n/l

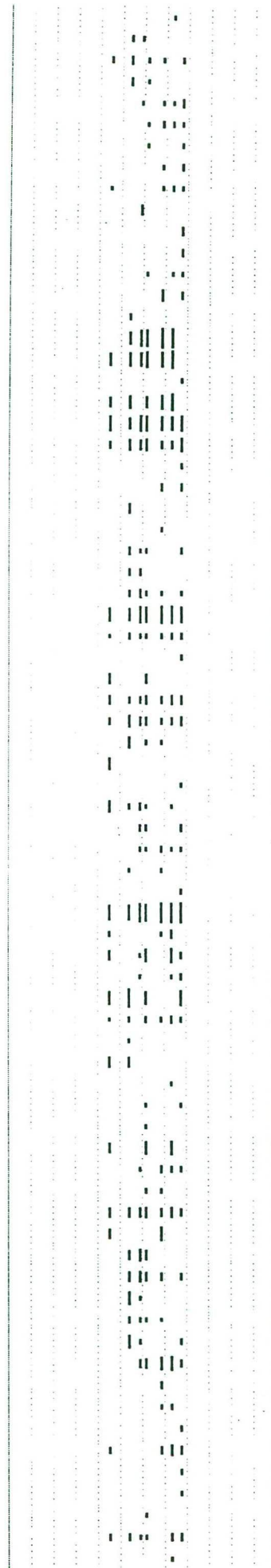
Amphidinium sphenoides  
 Centrales  
 Cerataulina pelagica  
 Ceratium furca  
 Ceratium fusus  
 Ceratium horridum  
 Ceratium macroceros  
 Ceratium minutum  
 Ceratium tripos  
 Chaetoceros  
 Chaetoceros compressus  
 Chaetoceros danicus  
 Chaetoceros densus  
 Chaetoceros socialis  
 Chrysochromulina  
 Cochlodinium  
 Craspedomonadaceae  
 Cryptophyceae  
 Cylindrotheca closterium  
 Dictyocha fibula  
 Gonyaulax digitale  
 Guinardia flaccida  
 Gymnodiniaceae  
 Gymnodinium elongatum  
 Gyrodinium  
 Heterocapsa rotundata  
 Katodinium glaucum  
 Leptocylindrus danicus  
 Leptocylindrus minimus  
 Leucocryptos  
 Mesoporos perforatus  
 Micracanthodinium  
 Myrionecta rubra  
 Nitzschia sigma  
 onbepaalde alg  
 Pennales  
 Peridiniaceae  
 Phaeocystis  
 Prasinophyceae  
 Prorocentrum balticum  
 Prorocentrum compressum  
 Prorocentrum minimum  
 Protomonadales  
 Protoperidinium  
 Pseudo-nitzschia  
 Pseudo-nitzschia delicatissima  
 Pterosperma  
 Pyramimonas  
 Pyramimonas longicauda  
 Rhizosolenia alata  
 Rhizosolenia delicatula  
 Rhizosolenia fragilissima  
 Rhizosolenia hebetata f. semispina  
 Rhizosolenia shrubsolei  
 Rhizosolenia stolterfothii  
 Scrippsiella  
 Stauroneis membranacea  
 Telonema subtilis  
 Thalassionema nitzschioides  
 Torodinium robustum



- 100, ■ 1000, ■ 10000, ■ 100000, ■ 1000000 n/l

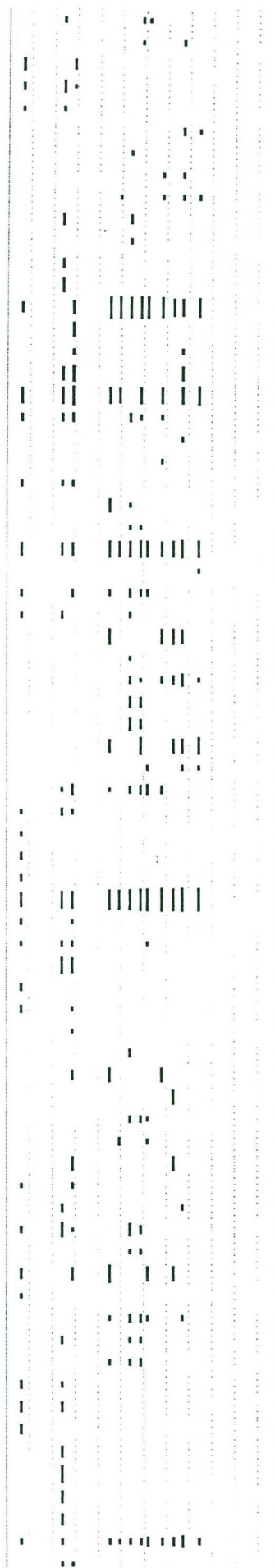


Amphidinium sphenoides  
 Asterionella glacialis  
 Centrales  
 Cerataulina pelagica  
 Ceratium furca  
 Ceratium fusus  
 Ceratium horridum  
 Ceratium macroceros  
 Ceratium tripos  
 Chaetoceros  
 Chaetoceros compressus  
 Chaetoceros curvisetus  
 Chaetoceros danicus  
 Chaetoceros debilis  
 Chaetoceros densus  
 Chaetoceros socialis  
 Chrysochromulina  
 Cochlodinium  
 Craspedomonadaceae  
 Cryptophyceae  
 Cylindrotheca closterium  
 Dictyocha fibula  
 Dictyocha speculum  
 Dinobryon faculiferum  
 Dinophysis norvegica  
 Entomoneis  
 Eucampia zodiacus  
 Guinardia flaccida  
 Gymnodiniaceae  
 Gyrodinium  
 Gyrodinium calyptoglyphe  
 Heterocapsa rotundata  
 Katodinium glaucum  
 Leptocylindrus danicus  
 Leptocylindrus minimus  
 Leucocryptos  
 Mesoporos perforatus  
 Myrionecta rubra  
 Navicula  
 Navicula distans  
 Nitzschia sigma  
 Odontella sinensis  
 onetermineerbare alg  
 Paralia marina  
 Pennales  
 Peridiniaceae  
 Phaeocystis  
 Pleurosigma  
 Pleurosigma angulatum  
 Prasinophyceae  
 Prorocentrum balticum  
 Prorocentrum compressum  
 Prorocentrum minimum  
 Protomonadales  
 Protoperidinium  
 Protoperidinium bipes  
 Pseudo-nitzschia delicatissima  
 Pyramimonas  
 Rhizosolenia alata  
 Rhizosolenia delicatula  
 Rhizosolenia fragilissima  
 Rhizosolenia hebetata f. semispina  
 Rhizosolenia shrubsolei  
 Rhizosolenia stouterfothii  
 Skeletonema costatum  
 Stauroneis membranacea  
 Stephanopyxis turris  
 Thalassionema nitzschioides  
 Thalassiosira delicatula  
 Thalassiosira eccentrica  
 Thalassiosira leptopa  
 Torodinium robustum  
 Triceratium alternans





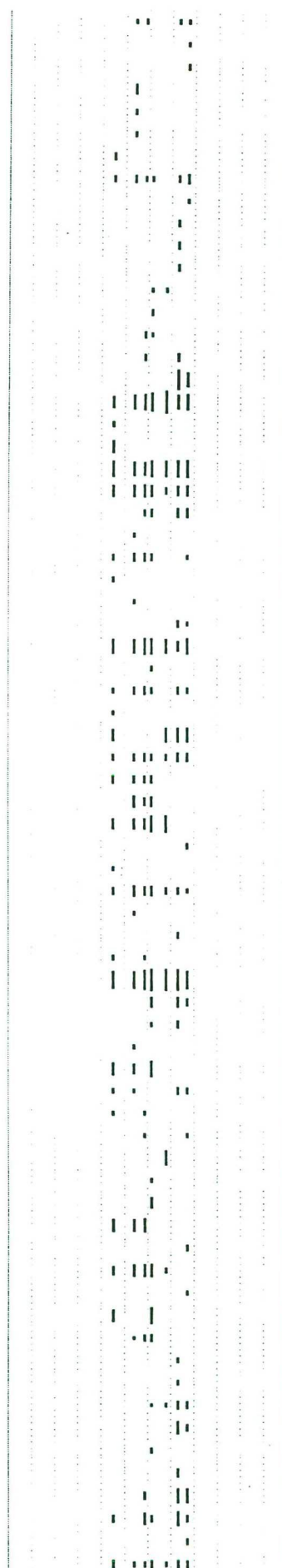
Amphidinium acutissimum  
 Amphidinium crassum  
 Brockmanniella brockmannii  
 Centrales  
 Cerataulina pelagica  
 Ceratium fusus  
 Ceratium lineatum  
 Ceratium macroceros  
 Ceratium tripos  
 Chaetoceros  
 Chaetoceros danicus  
 Chaetoceros debilis  
 Chaetoceros gracilis  
 Chrysochromulina  
 Chrysomonadales  
 Cochlodinium  
 Craspedomonadaceae  
 Cryptophyceae  
 Cylindrotheca closterium  
 Dictyocha fibula  
 Dinophyceae  
 Entomoneis  
 Fibrocapsa japonica  
 Gonyaulax digitale  
 Gymnodiniaceae  
 Gymnodinium elongatum  
 Gyrodinium  
 Gyrodinium spirale  
 Heterocapsa rotundata  
 Heterocapsa triquetra  
 Katodinium glaucum  
 Leptocylindrus danicus  
 Leptocylindrus minimus  
 Leucocryptos  
 Mesoporos perforatus  
 Myrionecta rubra  
 Navicula  
 Nitzschia  
 Nitzschia sigma  
 Odontella aurita  
 onetermineerbare alg  
 Pennales  
 Peridiniaceae  
 Phaeocystis  
 Plagiogrammopsis vanheurckii  
 Pleurosigma  
 Podosira stelliger  
 Polykrikos schwartzii  
 Prasinophyceae  
 Prorocentrum balticum  
 Prorocentrum compressum  
 Prorocentrum minimum  
 Protomonadales  
 Protoperidinium  
 Protoperidinium bipes  
 Pseudo-nitzschia delicatissima  
 Pterosperma  
 Pyramimonas  
 Rhaphoneis amphiceros  
 Rhizosolenia alata  
 Rhizosolenia shrubsolei  
 Scrippsiella  
 Thalassionema nitzschioides  
 Thalassiosira decipiens  
 Thalassiosira eccentrica  
 Thalassiosira gravida  
 Thalassiosira levanderi  
 Thalassiosira nordenskiöldii  
 Thalassiosira rotula  
 Torodinium robustum  
 Warnowia



[illegible]

- 100, ■ 1000, ■ 10000, ■ 100000, ■ 1000000 n/l

Actinoptychus senarius  
 Amphidinium crassum  
 Amphidinium sphenoides  
 Apedinella  
 Asterionella glacialis  
 Belleriochea malleus  
 Brockmanniella brockmannii  
 Centrales  
 Cerataulina pelagica  
 Ceratium fusus  
 Ceratium horridum  
 Ceratium macroceros  
 Ceratium tripos  
 Chaetoceros  
 Chaetoceros danicus  
 Chaetoceros densus  
 Chaetoceros socialis  
 Chrysochromulina  
 Cochlodinium  
 Craspedomonadaceae  
 Cryptophyceae  
 Cyllindrotheca closterium  
 Dictyocha speculum  
 Dinophysis rotundata  
 Entomoneis  
 Fibrocapsa japonica  
 Gonyaulax digitale  
 Guinardia flaccida  
 Gymnodiniaceae  
 Gymnodinium elongatum  
 Gyrodinium  
 Gyrodinium spirale  
 Heterocapsa rotundata  
 Katodinium glaucum  
 Leptocylindrus danicus  
 Leptocylindrus minimus  
 Leucocryptos  
 Licmophora  
 Micracanthodinium  
 Myrionecta rubra  
 Navicula  
 Navicula distans  
 Nitzschia sigma  
 onetermineerbare alg  
 Paralia marina  
 Pennales  
 Peridiniaceae  
 Phaeocystis  
 Pleurosigma  
 Pleurosigma angulatum  
 Podosira stelliger  
 Prasinophyceae  
 Prorocentrum balticum  
 Prorocentrum compressum  
 Protomonadales  
 Protoperidinium  
 Pseudo-nitzschia delicatissima  
 Pterosperma  
 Pyramimonas  
 Rhizosolenia alata  
 Rhizosolenia delicatula  
 Rhizosolenia hebetata f. semispina  
 Rhizosolenia shrubsolei  
 Rhizosolenia stolterfothii  
 Scrippsiella  
 Stauroneis membranacea  
 Thalassionema nitzschioides  
 Thalassiosira decipiens  
 Thalassiosira eccentrica  
 Torodinium robustum



- 100, ■ 1000, ■ 10000, ■ 100000, ■ 1000000 n/l



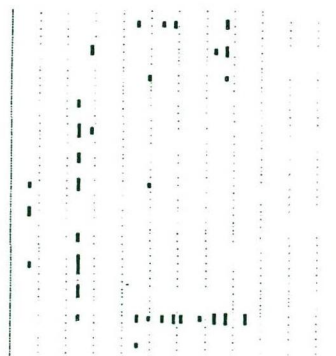
Amphidinium acutissimum  
Amphidinium crassum  
Amphidinium sphenoides  
Asterionella glacialis  
Bacillaria paxillifer  
Brockmanniella brockmannii  
Centrales  
Cerataulina pelagica  
Ceratium longipes  
Ceratium macroceros  
Ceratium tripos  
Chaetoceros  
Chaetoceros compressus  
Chaetoceros debilis  
Chaetoceros densus  
Chrysochromulina  
Cochlodinium  
Corymbellus aureus  
Craspedomonadaceae  
Cryptophyceae  
Cylindrotheca closterium  
Dictyocha fibula  
Dictyocha speculum  
Dinophysis norvegica  
Ditylum brightwellii  
Entomoneis  
Eucampia zodiacus  
Guinardia flaccida  
Gymnodiniaceae  
Gymnodinium elongatum  
Gymnodinium mikimotoi  
Gyrodinium  
Gyrodinium spirale  
Helicotheca tamesis  
Heterocapsa  
Heterocapsa rotundata  
Heterocapsa triquetra  
Katodinium glaucum  
Lauderia annulata  
Leptocylindrus danicus  
Leptocylindrus minimus  
Leucocryptos  
Licmophora  
Mesoporos perforatus  
Myrionecta rubra  
Navicula  
Nitzschia sigma  
Odontella aurita  
Odontella regia  
ondetermineerbare alg  
Paralia marina  
Pennales  
Peridiniaceae  
Phaeocystis  
Pleurosigma  
Podosira stelliger  
Polykrikos schwartzii  
Prasinophyceae  
Prorocentrum compressum  
Prorocentrum minimum  
Protoceratium reticulatum  
Protomonadales  
Protoperidinium  
Protoperidinium bipes  
Pseudo-nitzschia  
Pseudo-nitzschia delicatissima  
Pterosperma  
Pyramimonas  
Pyramimonas longicauda  
Rhizosolenia alata  
Rhizosolenia delicatula  
Rhizosolenia fragilissima  
Rhizosolenia hebetata f. semispina

— 100, ■ 1000, ■ 10000, ■ 100000, ■ 1000000, ■ 10000000

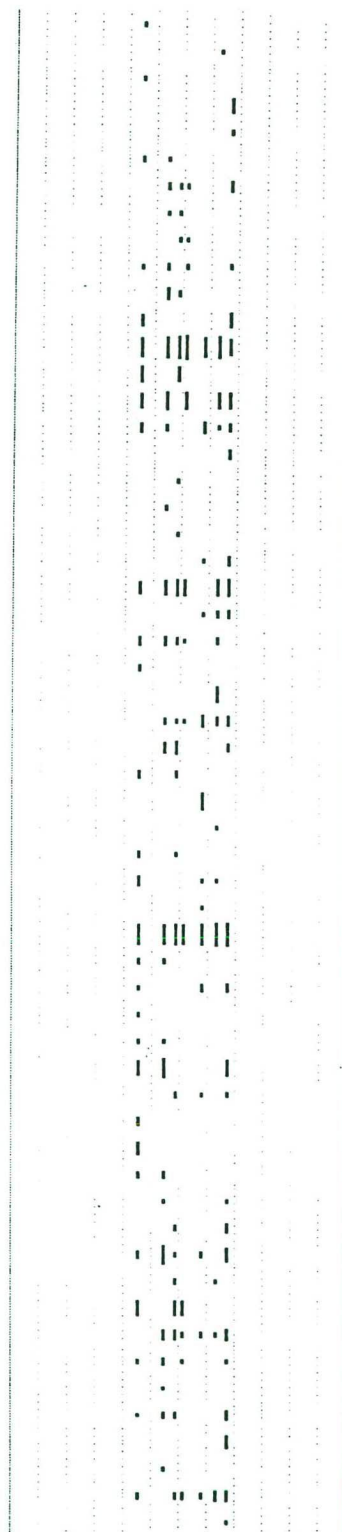


J F M A M J J A S O N D

*Rhizosolenia shrubsolei*  
*Rhizosolenia stolterfothii*  
*Scrippsiella*  
*Skeletonema costatum*  
*Thalassionema nitzschioides*  
*Thalassiosira anguste-lineata*  
*Thalassiosira decipiens*  
*Thalassiosira eccentrica*  
*Thalassiosira gravida*  
*Thalassiosira levanderi*  
*Thalassiosira rotula*  
*Torodinium robustum*  
*Warnowia*

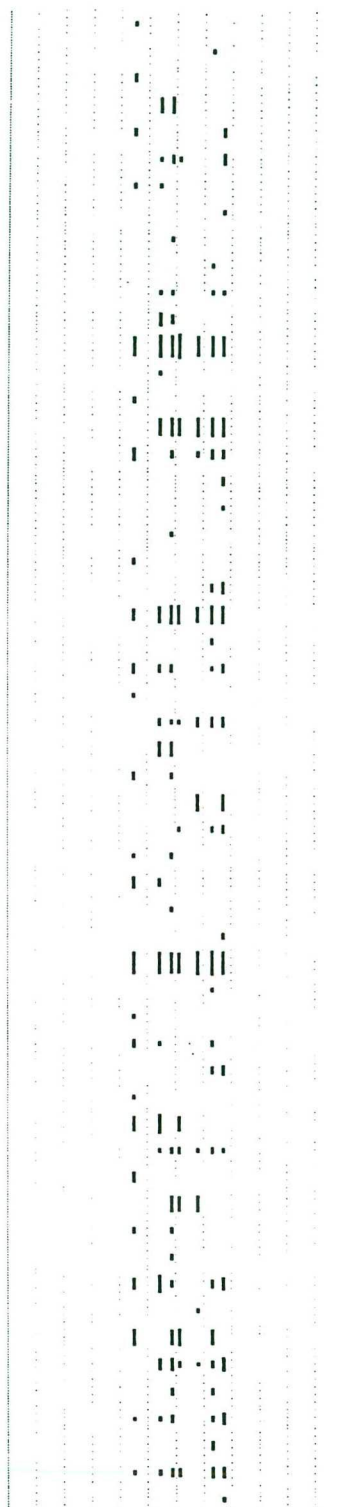


Alexandrium  
 Amphidinium crassum  
 Asterionella glacialis  
 Attheya septentrionalis  
 Bellerochea malleus  
 Centrales  
 Cerataulina pelagica  
 Ceratium furca  
 Ceratium macroceros  
 Ceratium tripos  
 Chaetoceros  
 Chaetoceros socialis  
 Chrysochromulina  
 Craspedomonadaceae  
 Cryptophyceae  
 Cyllindrotheca closterium  
 Dictyocha fibula  
 Dinophyceae  
 Dinophysis norvegica  
 Gonyaulax digitale  
 Guinardia flaccida  
 Gymnodiniaceae  
 Gymnodinium elongatum  
 Gyrodinium  
 Gyrodinium spirale  
 Heterocapsa rotundata  
 Katodinium glaucum  
 Leptocylindrus danicus  
 Leptocylindrus minimus  
 Leucocryptos  
 Licmophora  
 Mesoporos perforatus  
 Myrionecta rubra  
 Navicula distans  
 ondetmineerbare alg  
 Peridiniaceae  
 Pleurosigma  
 Pleurosigma angulatum  
 Polykrikos schwartzii  
 Prasinophyceae  
 Prorocentrum compressum  
 Prorocentrum minimum  
 Protomonadales  
 Protoperidinium  
 Protoperidinium bipes  
 Pseudo-nitzschia  
 Pseudo-nitzschia delicatissima  
 Pterosperma  
 Pyramimonas  
 Rhizosolenia alata  
 Rhizosolenia delicatula  
 Rhizosolenia hebetata f. semispina  
 Rhizosolenia shrubsolei  
 Rhizosolenia stolterfothii  
 Scrippsiella  
 Torodinium robustum  
 Warnowia



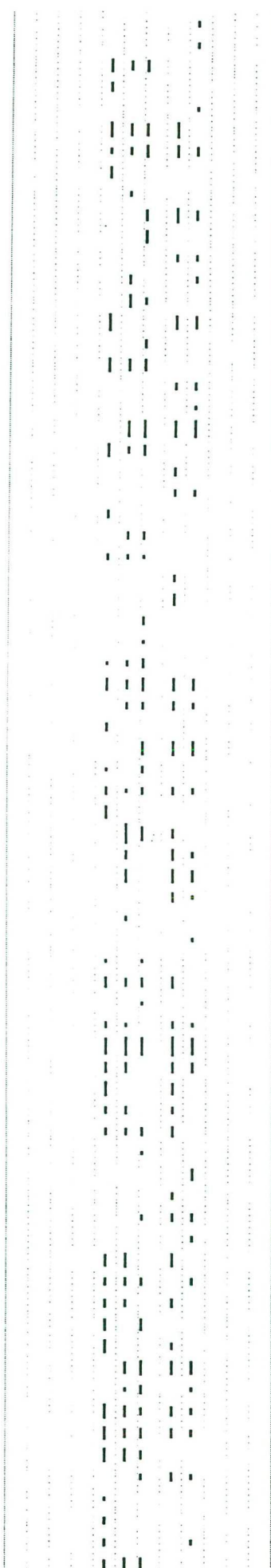
- 100, ■ 1000, ■ 10000, ■ 100000, ■ 1000000, ■ 10000000 n/l

Actinocyclus octonarius  
 Amphidinium crassum  
 Asterionella glacialis  
 Attheya septentrionalis  
 Centrales  
 Cerataulina pelagica  
 Ceratium furca  
 Ceratium fusus  
 Ceratium lineatum  
 Ceratium macroceros  
 Ceratium tripos  
 Chaetoceros  
 Chrysochromulina  
 Cochlodinium  
 Corymbellus aureus  
 Cryptophyceae  
 Cylindrotheca closterium  
 Dictyocha fibula  
 Dictyocha speculum  
 Dinophysis rotundata  
 Entomoneis  
 Guinardia flaccida  
 Gymnodiniaceae  
 Gymnodinium elongatum  
 Gyrodinium  
 Gyrodinium spirale  
 Katodinium glaucum  
 Leptocylindrus danicus  
 Leptocylindrus minimus  
 Leucocryptos  
 Licmophora  
 Mesoporos perforatus  
 Myrionecta rubra  
 Nitzschia sigma  
 Odontella mobiliensis  
 ondetemineerbare alg  
 Paralia marina  
 Pennales  
 Peridiniaceae  
 Pleurosigma  
 Pleurosigma angulatum  
 Prasinophyceae  
 Prorocentrum compressum  
 Prorocentrum minimum  
 Protomonadales  
 Protoperidinium  
 Pseudo-nitzschia  
 Pseudo-nitzschia delicatissima  
 Pterosperma  
 Pyramimonas  
 Rhizosolenia alata  
 Rhizosolenia delicatula  
 Rhizosolenia shrubsolei  
 Rhizosolenia stolterfothii  
 Torodinium robustum  
 Warnowia



- 100, ■ 1000, ■ 10000, ■ 100000, ■ 1000000, ■ 10000000 n/l

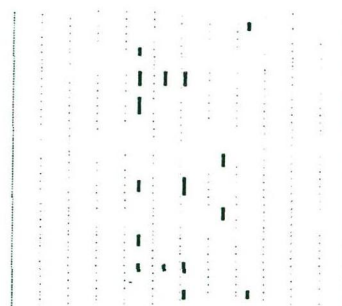
Actinoptychus senarius  
Amphidinium crassum  
Asterionella glacialis  
Asterionella kariana  
Bacteriastrum hyalinum  
Brockmanniella brockmannii  
Centrales  
Cerataulina pelagica  
Ceratium fusus  
Chaetoceros  
Chaetoceros compressus  
Chaetoceros danicus  
Chaetoceros densus  
Chaetoceros gracilis  
Chaetoceros socialis  
Chattonella  
Chrysochromulina  
Coscinodiscus radiatus  
Coscinodiscus wailesii  
Cryptophyceae  
Cylindrotheca closterium  
Detonula pumila  
Dinophysis rotundata  
Ditylum brightwellii  
Ebria tripartita  
Eucampia zodiacus  
Euglenophyceae  
Eunotogramma dubium  
Fibrocapsa japonica  
Gonyaulax spinifera  
Guinardia flaccida  
Gymnodiniaceae  
Gyrodinium  
Gyrodinium spirale  
Heterocapsa rotundata  
Heterocapsa triquetra  
Katodinium glaucum  
Lauderia annulata  
Leptocylindrus danicus  
Leptocylindrus minimus  
Leucocryptos  
Lithodesmium undulatum  
Myrionecta rubra  
Navicula distans  
Noctiluca scintillans  
Odontella aurita  
Odontella regia  
Odontella sinensis  
ondetermineerbare alg  
Paralia marina  
Pennales  
Peridiniaceae  
Pleurosigma  
Polykrikos schwartzii  
Prasinophyceae  
Prorocentrum  
Prorocentrum micans  
Prorocentrum triestinum  
Protomonadales  
Protoperidinium  
Protoperidinium bipes  
Pseudo-nitzschia  
Pseudo-nitzschia delicatissima  
Pyramimonas  
Pyramimonas longicauda  
Rhizosolenia delicatula  
Rhizosolenia setigera  
Rhizosolenia shrubsolei  
Rhizosolenia stolterfothii  
Roperia tessellata  
Scenedesmus  
Scrippsiella  
Skeletonema costatum



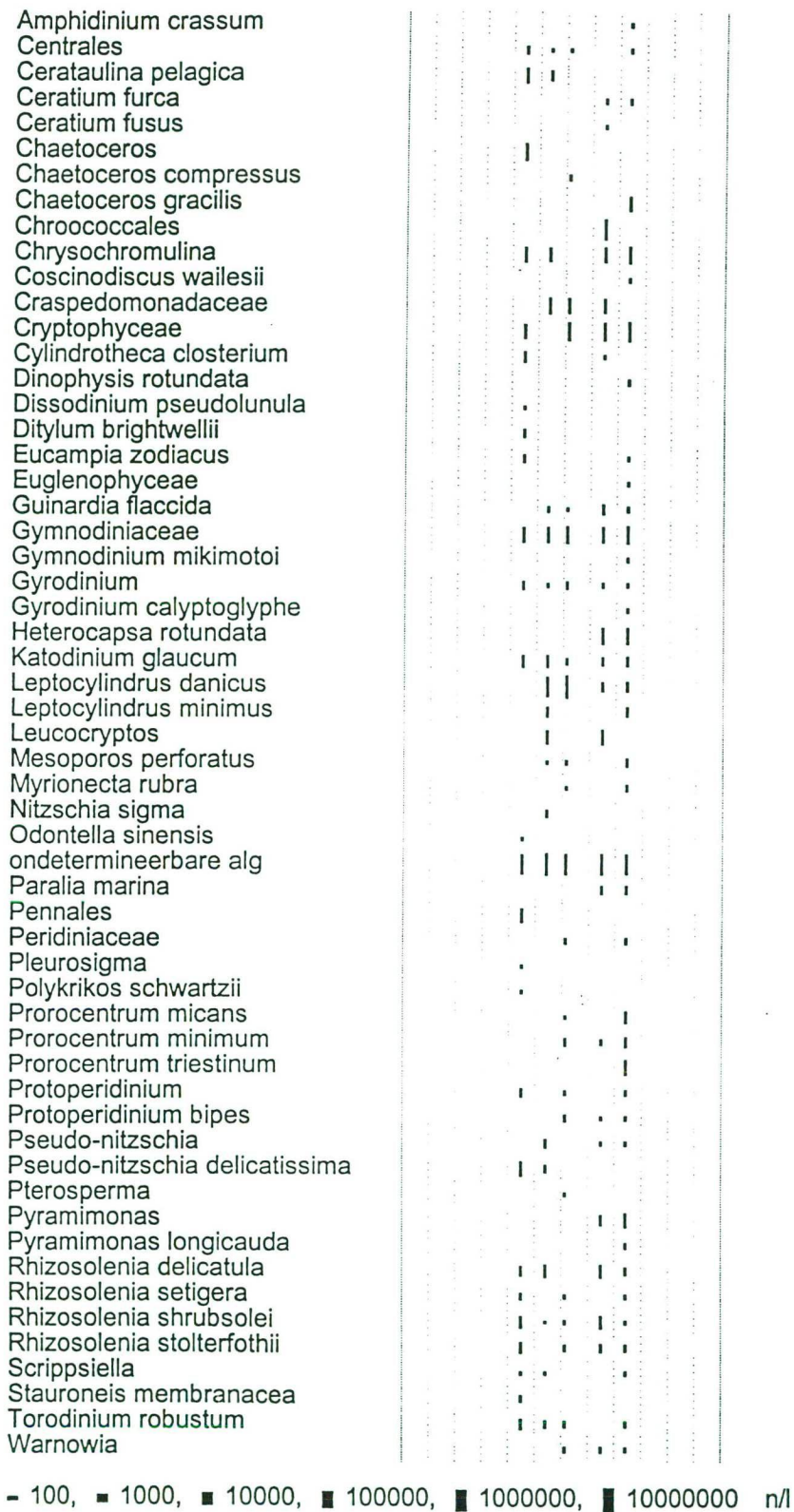


J F M A M J J A S O N D

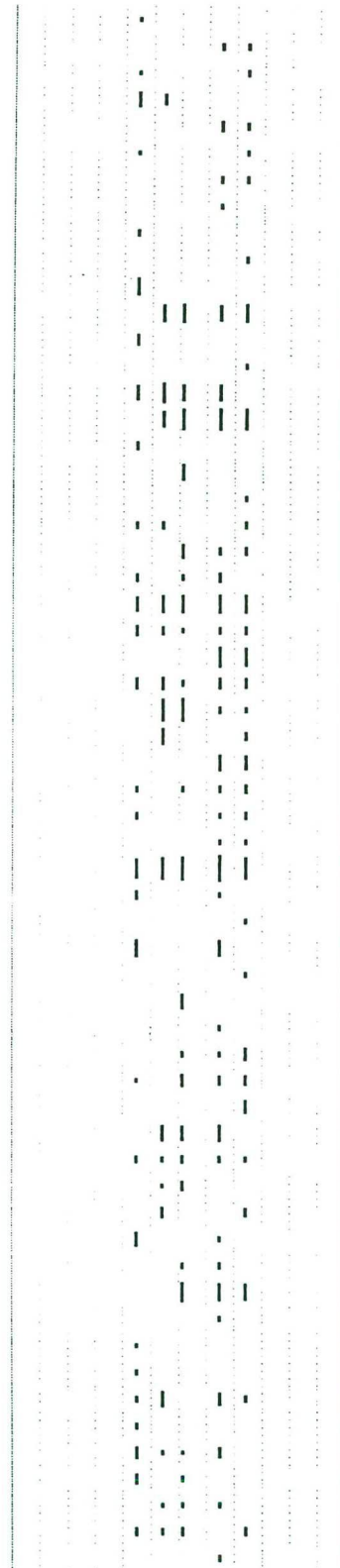
Stauroneis membranacea  
 Stephanopyxis turris  
 Thalassionema nitzschioides  
 Thalassiosira  
 Thalassiosira delicatula  
 Thalassiosira eccentrica  
 Thalassiosira levanderi  
 Thalassiosira punctigera  
 Thalassiosira rotula  
 Torodinium robustum  
 Triceratium alternans



- 100, ■ 1000, ■ 10000, ■ 100000, ■ 1000000, ■ 10000000 n/l

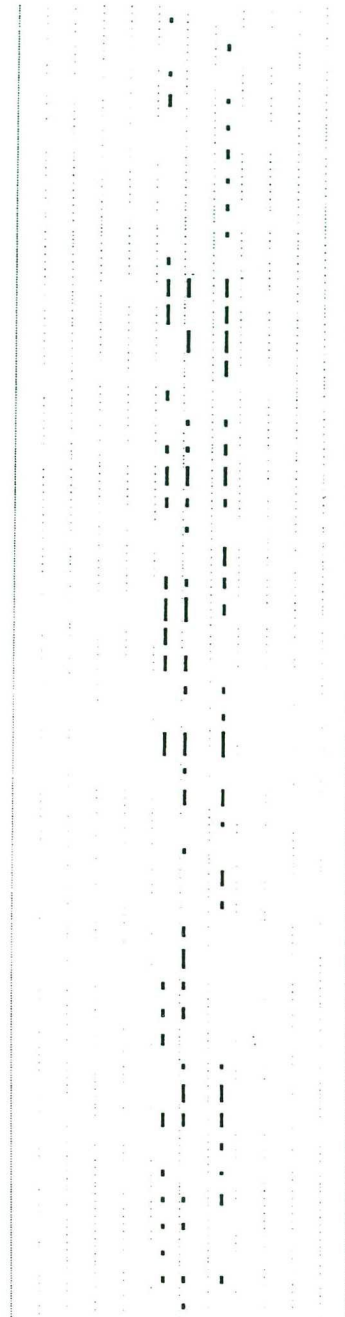


Actinocyclus octonarius  
 Amphidinium crassum  
 Centrales  
 Cerataulina pelagica  
 Ceratium furca  
 Ceratium fusus  
 Ceratium horridum  
 Ceratium tripos  
 Chaetoceros decipiens  
 Chaetoceros densus  
 Chaetoceros socialis  
 Chrysochromulina  
 Cochlodinium  
 Coscinodiscus radiatus  
 Craspedomonadaceae  
 Cryptophyceae  
 Cyllindrotheca closterium  
 Dinobryon faculiferum  
 Dinophysis  
 Eucampia zodiacus  
 Euglenophyceae  
 Guinardia flaccida  
 Gymnodiniaceae  
 Gyrodinium  
 Heterocapsa rotundata  
 Katodinium glaucum  
 Leptocylindrus danicus  
 Leptocylindrus minimus  
 Leucocryptos  
 Mesoporus perforatus  
 Myrionecta rubra  
 Navicula distans  
 ondetetermineerbare alg  
 Paralia marina  
 Pennales  
 Phaeocystis  
 Pleurosigma  
 Prasinophyceae  
 Prorocentrum  
 Prorocentrum micans  
 Prorocentrum minimum  
 Prorocentrum triestinum  
 Protomonadales  
 Protoperidinium  
 Protoperidinium bipes  
 Pseudo-nitzschia  
 Pseudo-nitzschia delicatissima  
 Pterosperma  
 Pyramimonas  
 Pyramimonas longicauda  
 Rhaphoneis amphiceros  
 Rhizosolenia alata  
 Rhizosolenia delicatula  
 Rhizosolenia hebetata f. semispina  
 Rhizosolenia shrubsolei  
 Rhizosolenia stolterfothii  
 Scrippsiella  
 Torodinium robustum  
 Warnowia



- 100, ■ 1000, ■ 10000, ■ 100000, ■ 1000000, ■ 10000000 n/l

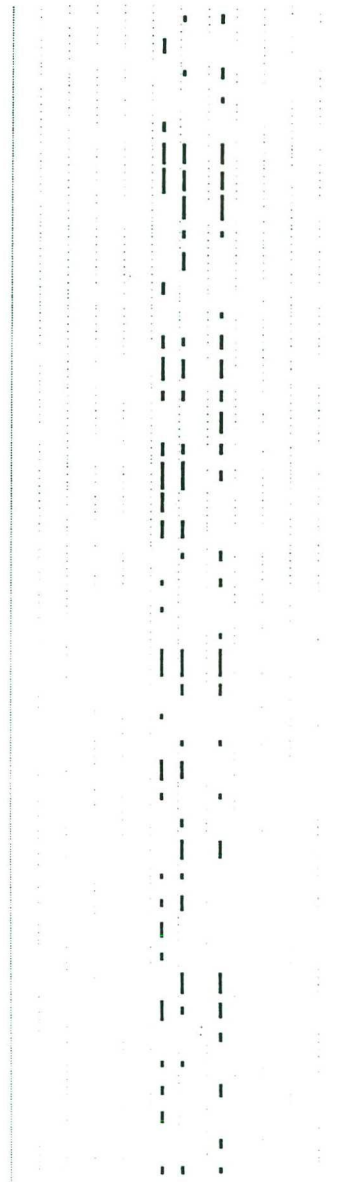
Alexandrium  
Amphidinium crassum  
Centrales  
Cerataulina pelagica  
Ceratium  
Ceratium furca  
Ceratium fusus  
Ceratium horridum  
Ceratium tripos  
Chaetoceros debilis  
Chrysochromulina  
Craspedomonadaceae  
Cryptophyceae  
Dinobryon faculiferum  
Eucampia zodiacus  
Euglenophyceae  
Guinardia flaccida  
Gymnodiniaceae  
Gyrodinium  
Gyrodinium calyptoglyphe  
Heterocapsa rotundata  
Katodinium glaucum  
Leptocylindrus danicus  
Leptocylindrus minimus  
Leucocryptos  
Mesoporos perforatus  
Myrionecta rubra  
ondetermineerbare alg  
Paralia marina  
Phaeocystis  
Pleurosigma  
Podosira stelliger  
Prasinophyceae  
Prorocentrum  
Prorocentrum minimum  
Protomonadales  
Protoperidinium  
Protoperidinium bipes  
Pseudo-nitzschia  
Pterosperma  
Pyramimonas  
Rhizosolenia delicatula  
Rhizosolenia robusta  
Rhizosolenia setigera  
Rhizosolenia shrubsolei  
Rhizosolenia stolterfothii  
Scrippsiella  
Torodinium robustum  
Triceratium alternans



- 100, ■ 1000, ■ 10000, ■ 100000, ■ 1000000, ■ 10000000 n/l



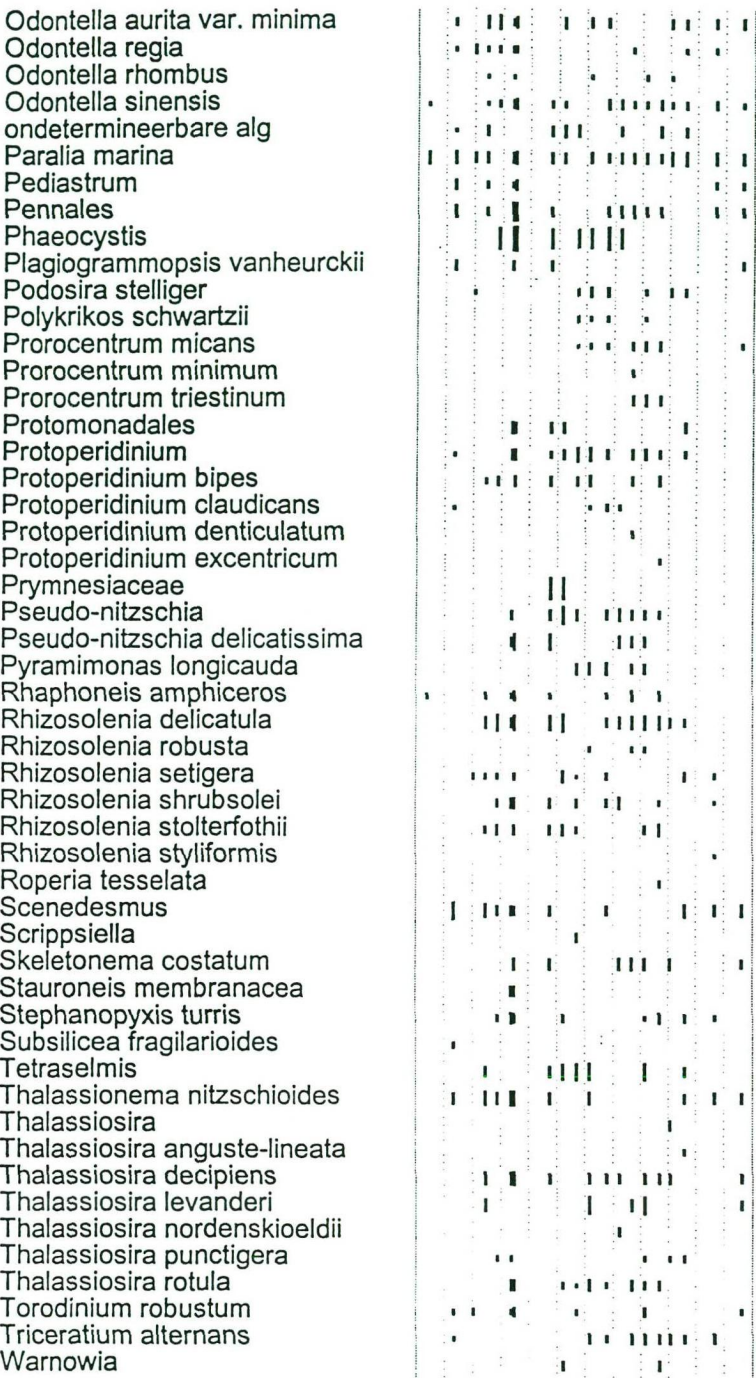
Amphidinium crassum  
 Cerataulina pelagica  
 Ceratium furca  
 Ceratium horridum  
 Chaetoceros decipiens  
 Chrysochromulina  
 Craspedomonadaceae  
 Cryptophyceae  
 Cylindrotheca closterium  
 Dinobryon faculiferum  
 Eucampia zodiacus  
 Euglenophyceae  
 Guinardia flaccida  
 Gymnodiniaceae  
 Gyrodinium  
 Heterocapsa rotundata  
 Katodinium glaucum  
 Leptocylindrus danicus  
 Leptocylindrus minimus  
 Leucocryptos  
 Mesoporus perforatus  
 Myrionecta rubra  
 Navicula  
 Navicula distans  
 onetermineerbare alg  
 Paralia marina  
 Pennales  
 Peridiniaceae  
 Phaeocystis  
 Pleurosigma  
 Prorocentrum minimum  
 Protomonadales  
 Protoperidinium  
 Protoperidinium bipes  
 Pseudo-nitzschia  
 Pseudo-nitzschia delicatissima  
 Pyramimonas  
 Rhizosolenia delicatula  
 Rhizosolenia robusta  
 Rhizosolenia setigera  
 Rhizosolenia shrobsolei  
 Rhizosolenia stolterfothii  
 Skeletonema costatum  
 Torodinium robustum



- 100, ■ 1000, ■ 10000, ■ 100000, ■ 1000000 n/l

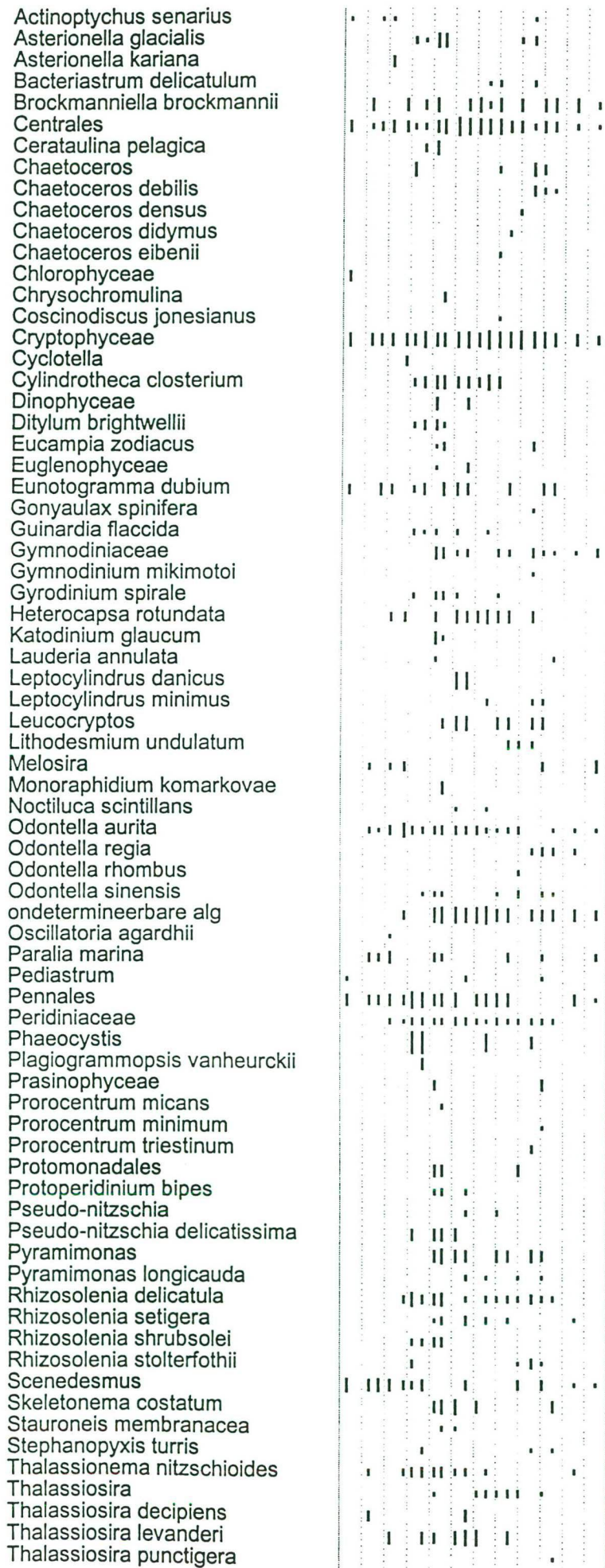


J F M A M J J A S O N D



- 10, - 100, ■ 1000, ■ 10000, ■ 100000, ■ 1000000, ■ 10000000, ■ 100000000 n

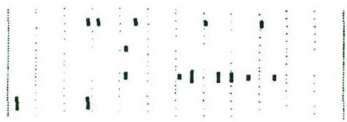




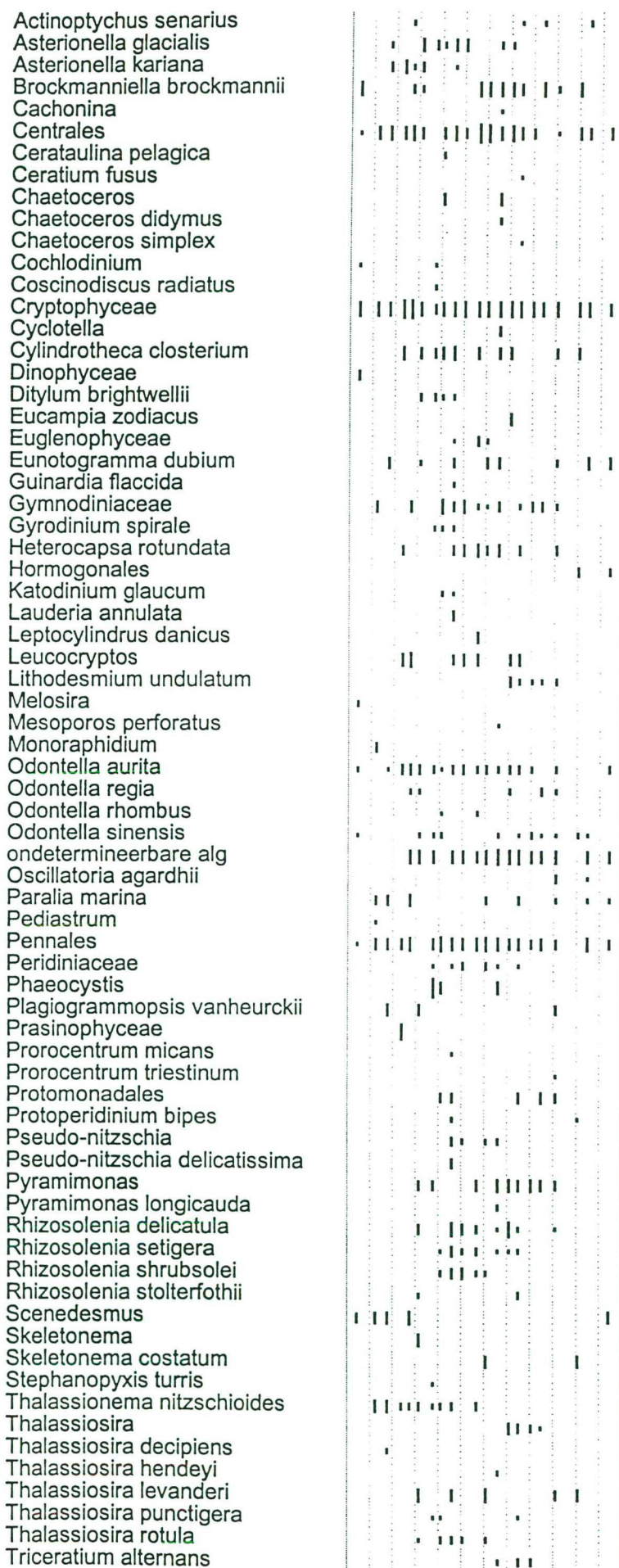


J F M A M J J A S O N D

Thalassiosira rotula  
Torodinium robustum  
Triceratium alternans  
Ulotrichales

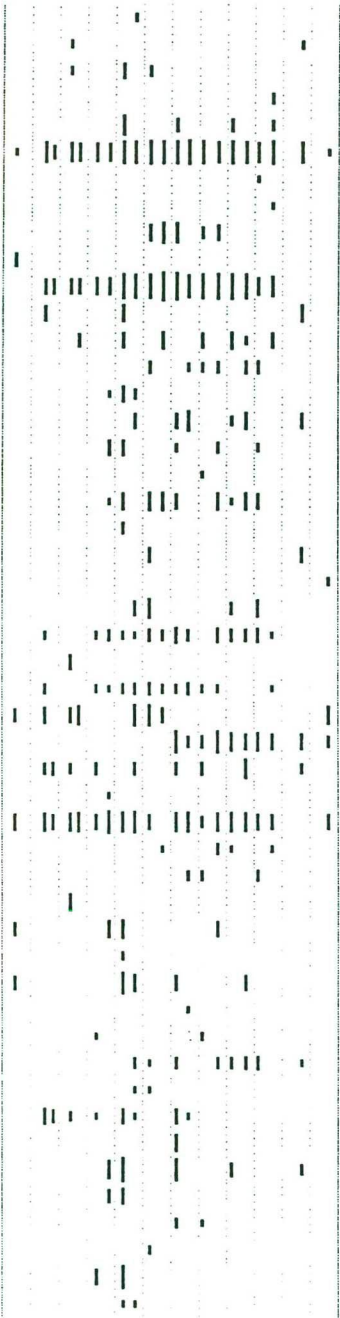


- 1000, ■ 10000, ■ 100000, ■ 1000000, ■ 10000000 n/l



— 1000, ■ 10000, ■ 100000, ■ 1000000, ■ 10000000 n/l

Actinoptychus senarius  
Asterionella formosa  
Asterionella kariana  
Aulacoseira granulata  
Brockmanniella brockmannii  
Centrales  
Chaetoceros  
Chaetoceros danicus  
Chaetoceros subtilis  
Chrysomonadales  
Cryptophyceae  
Cyclotella  
Cylindrotheca closterium  
Diploneis  
Ditylum brightwellii  
Eunotogramma dubium  
Gymnodiniaceae  
Helicotheca tamesis  
Heterocapsa rotundata  
Leptocylindrus danicus  
Leucocryptos  
Lithodesmium undulatum  
Melosira  
Melosira dubia  
Monoraphidium  
Odontella aurita  
ondetermineerbare alg  
Oscillatoria agardhii  
Paralia marina  
Pediastrum  
Pennales  
Peridiniaceae  
Plagiogrammopsis vanheurckii  
Prasinophyceae  
Protomonadales  
Protopteridium bipes  
Pyramimonas  
Rhaphoneis amphiceros  
Rhizosolenia delicatula  
Rhizosolenia setigera  
Rhizosolenia shrubsolei  
Scenedesmus  
Skeletonema  
Skeletonema costatum  
Thalassionema nitzschioides  
Thalassiosira  
Thalassiosira hendeyi  
Thalassiosira levanderi  
Thalassiosira rotula

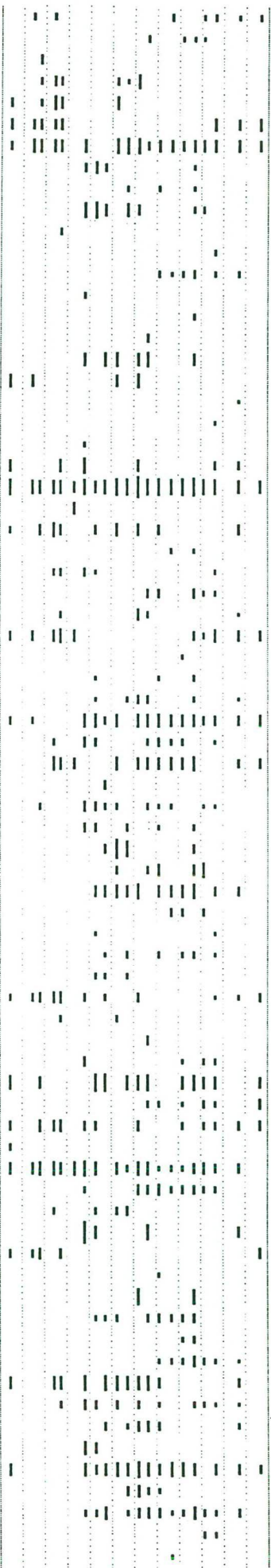


- 1000, ■ 10000, ■ 100000, ■ 1000000 n/l



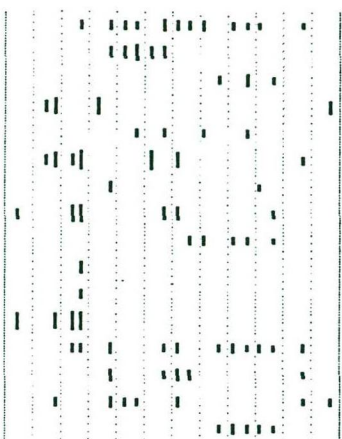
J F M A M J J A S O N D

Actinoptychus senarius  
Amphidinium crassum  
Asterionella formosa  
Asterionella glacialis  
Asterionella kariana  
Brockmanniella brockmannii  
Centrales  
Cerataulina pelagica  
Ceratium fusus  
Chaetoceros  
Chaetoceros affinis  
Chaetoceros curvisetus  
Chaetoceros danicus  
Chaetoceros debilis  
Chaetoceros densus  
Chaetoceros didymus  
Chrysochromulina  
Chrysomonadales  
Cochlodinium  
Coscinodiscus concinnus  
Coscinodiscus radiatus  
Craspedomonadaceae  
Cryptophyceae  
Cyclotella  
Cylindrotheca closterium  
Dinophysis rotundata  
Ditylum brightwellii  
Eucampia zodiacus  
Euglenophyceae  
Eunotogramma dubium  
Gonyaulax  
Gonyaulax spinifera  
Guinardia flaccida  
Gymnodiniaceae  
Gyrodinium spirale  
Heterocapsa rotundata  
Heterocapsa triquetra  
Katodinium glaucum  
Lauderia annulata  
Leptocylindrus danicus  
Leptocylindrus minimus  
Leucocryptos  
Lithodesmium undulatum  
Mesoporus perforatus  
Myrionecta rubra  
Noctiluca scintillans  
Odontella aurita  
Odontella regia  
Odontella rhombus  
Odontella sinensis  
ondetermineerbare alg  
Oscillatoria agardhii  
Palia marina  
Pediastrum  
Pennales  
Peridiniaceae  
Peridinales  
Phaeocystis  
Plagiogrammopsis vanheurckii  
Polykrikos schwartzii  
Prasinophyceae  
Prorocentrum micans  
Prorocentrum minimum  
Prorocentrum triestinum  
Protomonadales  
Protoperidinium bipes  
Pseudo-nitzschia  
Pseudo-nitzschia delicatissima  
Pyramimonas  
Pyramimonas longicauda  
Rhizosolenia delicatula  
Rhizosolenia fragilissima  
Rhizosolenia robusta



J F M A M J J A S O N D

Rhizosolenia setigera  
Rhizosolenia shrubsolei  
Rhizosolenia stolterfothii  
Scenedesmus  
Scrippsiella  
Skeletonema costatum  
Stephanopyxis turris  
Thalassionema nitzschioides  
Thalassiosira  
Thalassiosira decipiens  
Thalassiosira eccentrica  
Thalassiosira levanderi  
Thalassiosira punctigera  
Thalassiosira rotula  
Torodinium robustum  
Triceratium alternans



- 100, ■ 1000, ■ 10000, ■ 100000, ■ 1000000, ■ 10000000 n/l

