



Divisie Geluid
Stieltjesweg 1
Postbus 155
2600 AD DELFT

www.tno.nl

T 015 269 2000
F 015 269 2111

TNO-rapport

HAG-RPT-010159

ONDERZOEK EFFECTIVITEIT SCHERMTOPPEN

**Deel 2 - Vergelijkende diffractietesten
schermtopvarianten
Bijlage C3: L-toppen**

Datum 11 december 2001

Auteurs ir. F. de Roo
ing. F.G.P. van der Knaap
J. van 't Hof

Exemplaarnummer
Oplage
Aantal pagina's
Aantal bijlagen

Projectnummer: 008.03318/01.01
Opdrachtgever: Rijkswaterstaat
Dienst Weg- en Waterbouwkunde

Alle rechten voorbehouden.

Niets uit deze uitgave mag worden vermenigvuldigd en/of openbaar gemaakt door middel van druk, foto-kopie, microfilm of op welke andere wijze dan ook, zonder voorafgaande toestemming van TNO.

Indien dit rapport in opdracht werd uitgebracht, wordt voor de rechten en verplichtingen van opdrachtgever en opdrachtnemer verwezen naar de Algemene Voorwaarden voor onderzoekopdrachten aan TNO, dan wel de betreffende terzake tussen de partijen gesloten overeenkomst.

Het ter inzage geven van het TNO-rapport aan direct belang-hebbenden is toegestaan.

In deze bijlage worden de gemeten en berekende resultaten van de geluidsmetingen aan de schermtoppen gepresenteerd.

Van iedere schermtopvariant zoals eerder genoemd in het hoofdrapport in tabel II wordt hierna het volgende gepresenteerd:

- een overzichtsfoto van het basisscherm met de top,
- een korte technische beschrijving van de top, indien die voorhanden is,
- een figuur met daarin vier grafieken met per microfoonpositie de berekende impulsresponsie,
- een figuur met drie grafieken waarbij in de bovenste twee de berekende Diffraction Index (DI) per microfoon wordt gepresenteerd en in het onderste figuur de overall DI en Diffraction Index Difference (DID) van alle microfoons,
- een figuur met drie grafieken waarbij in de bovenste twee de berekende (DID) per microfoon wordt gepresenteerd en in het onderste figuur de overall DI en Diffraction Index Difference (DID) van alle microfoons,
- als laatste worden twee tabellen gepresenteerd waarbij in de eerste DI en in de tweede DID gepresenteerd worden per tertsband per microfoon positie en de totale overall indexen,
- onder de laatste tabel wordt de waarde van de Single-number rating of Diffraction Index Difference (DL) gegeven.

In de figuren met daarin weergegeven de impulsresponsies wordt per grafiek de responsie van de microfoon op een zelfde hoogte in de loodrechte en in de hoek onder 45 graden gegeven. Langs de x-as staat de looptijd van het geluidspad tussen de bron en de microfoons in milliseconden gegeven en langs de y-as de gemeten geluidsdrukken. Het dunne groene lijntje geeft het maximum van de druk aan in de gemeten impulsresponsie. Op dit punt wordt het begin van het Adrienne window geplaatst zoals in de voorlopige norm is aangegeven.

Om de verschillende microfoons duidelijk weer te kunnen geven is de responsie van de loodrechte microfoons iets naar boven geschoven en de responsie van de microfoons onder 45 graden iets naar beneden.

Serie 42, L-top met raamwerk, zonder 180 mm houten plaat, reflecterend basisscherm.

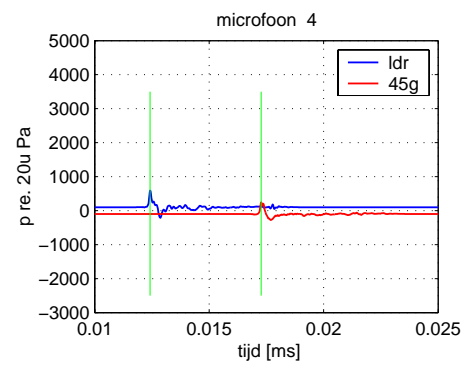
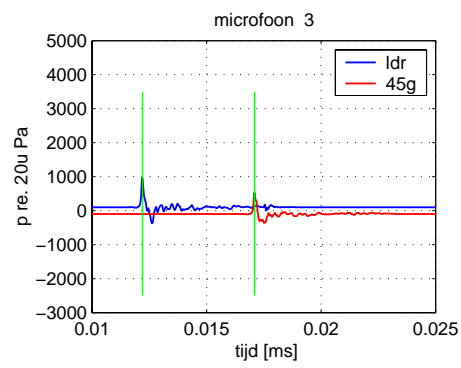
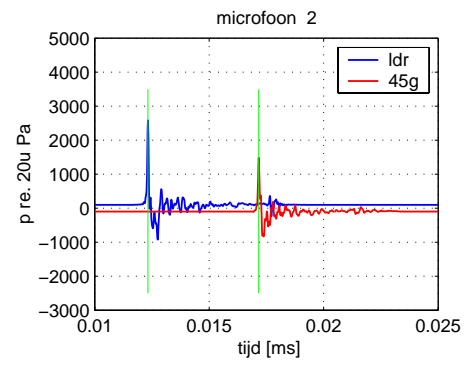
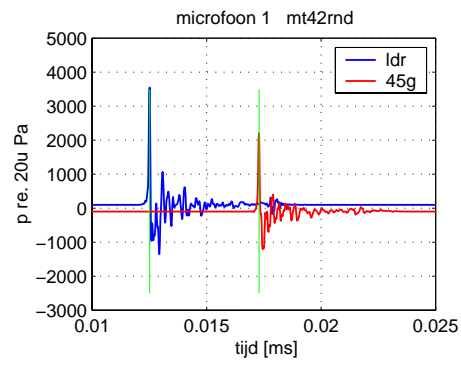


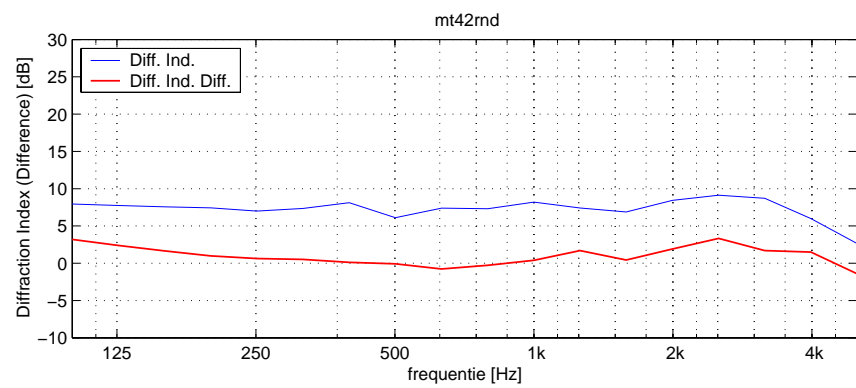
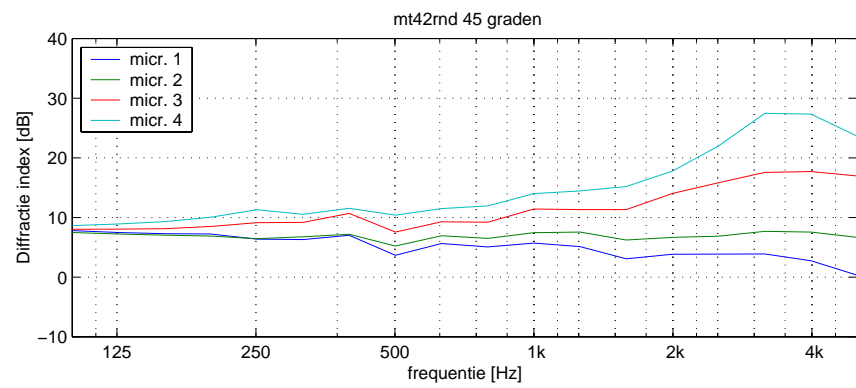
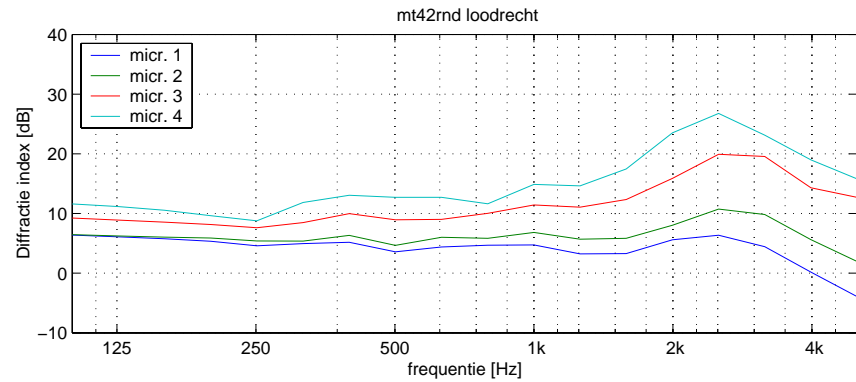
Technische beschrijving reflecterend basisscherm (42)

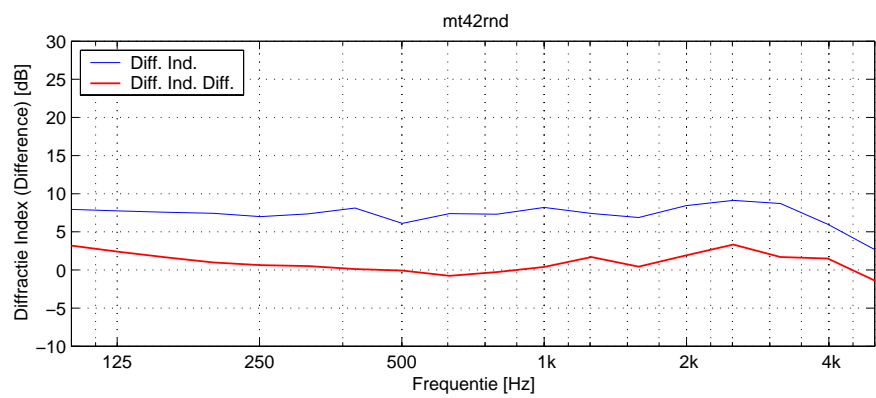
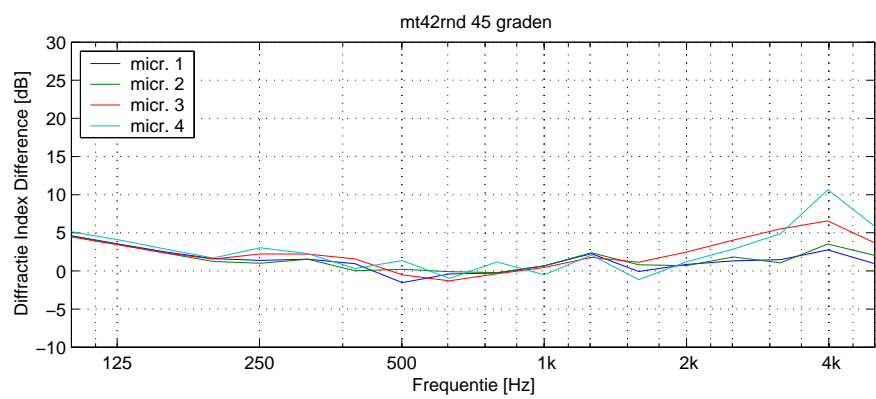
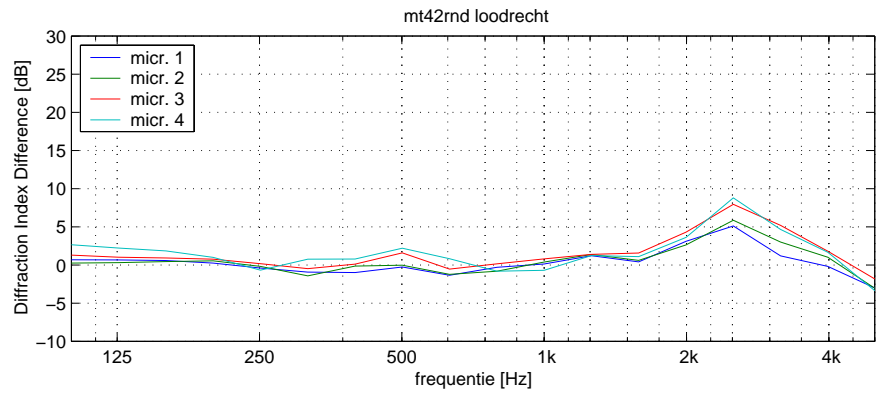
Leverancier: Holland Scherm bv
Giessenweg 4-6
3044 AL Rotterdam
Tel.nr. 010-2083329

Het basisscherm is opgebouwd m.b.v. 4 centimeter dikke azobé planken die door middel van messing en groef in elkaar vallen. De planken zijn opgebouwd tussen staanders van stalen H-binten.

Als een reflecterend basisscherm noodzakelijk was dan werd i.v.m. de geluidisolatie van het kale basisscherm een reflecterende voorzetwand aan de bronkant tussen de H-binten van de staanders geschoven. De voorzetwand bestaat uit platen van 18 mm dik geperst houtvezel met daarop aan de spouwzijde minerale wol platen van 5 centimeter dik.







mt42rnd

Berekende Diffraction Index [DI in dB] per microfoon en totaal

f(Hz)	mic.1	mic.2	mic.3	mic.4	mic.5	mic.6	mic.7	mic.8	DI
100	6.4	6.5	9.2	11.6	7.8	7.5	8.0	8.6	7.9
125	6.1	6.2	8.9	11.2	7.5	7.2	8.0	8.9	7.7
160	5.8	6.0	8.6	10.6	7.3	7.0	8.1	9.3	7.6
200	5.3	5.9	8.2	9.6	7.2	6.9	8.5	10.0	7.4
250	4.6	5.4	7.6	8.8	6.4	6.4	9.1	11.3	7.0
320	5.0	5.4	8.5	11.9	6.3	6.8	9.2	10.5	7.4
400	5.2	6.3	10.0	13.1	7.0	7.2	10.7	11.5	8.1
500	3.6	4.7	8.9	12.7	3.6	5.2	7.5	10.4	6.1
630	4.4	6.0	9.0	12.7	5.6	6.9	9.3	11.5	7.4
800	4.7	5.8	10.0	11.6	5.1	6.5	9.2	11.9	7.3
1000	4.7	6.8	11.4	14.9	5.7	7.4	11.4	14.0	8.2
1250	3.2	5.7	11.1	14.6	5.1	7.5	11.3	14.5	7.4
1600	3.3	5.8	12.3	17.5	3.1	6.2	11.3	15.2	6.9
2000	5.6	8.0	15.9	23.5	3.8	6.7	14.0	17.8	8.4
2500	6.4	10.7	19.9	26.8	3.9	6.9	15.8	22.0	9.1
3200	4.4	9.8	19.6	23.1	3.9	7.7	17.6	27.4	8.7
4000	0.2	5.6	14.3	19.0	2.8	7.5	17.7	27.3	6.0
5000	-3.9	2.0	12.7	15.8	0.3	6.7	17.0	23.6	2.6

Berekende Diffraction Index Difference [DID in dB] per microfoon en totaal

f(Hz)	mic.1	mic.2	mic.3	mic.4	mic.5	mic.6	mic.7	mic.8	DID
100	0.7	0.2	1.3	2.7	4.6	4.5	4.4	5.2	3.2
125	0.7	0.3	1.0	2.2	3.5	3.5	3.4	4.1	2.4
160	0.6	0.5	0.9	1.8	2.5	2.3	2.3	2.8	1.7
200	0.3	0.5	0.8	1.0	1.6	1.2	1.6	1.7	1.0
250	-0.4	-0.2	0.2	-0.7	1.4	1.0	2.2	3.0	0.6
320	-0.9	-1.4	-0.5	0.8	1.5	1.5	2.2	2.3	0.5
400	-1.0	-0.1	0.1	0.8	0.9	0.0	1.6	0.3	0.1
500	-0.3	-0.0	1.6	2.2	-1.5	0.2	-0.5	1.4	-0.1
630	-1.3	-1.2	-0.5	0.8	-0.4	-0.1	-1.3	-1.0	-0.8
800	-0.3	-0.8	0.2	-0.8	-0.3	-0.2	-0.4	1.2	-0.3
1000	0.1	0.4	0.8	-0.7	0.7	0.7	0.4	-0.5	0.4
1250	1.2	1.4	1.4	1.2	2.3	2.4	1.8	2.1	1.7
1600	0.4	0.6	1.6	1.1	-0.1	0.8	1.1	-1.1	0.4
2000	3.1	2.6	4.3	3.6	0.8	0.7	2.5	1.2	1.9
2500	5.1	5.9	8.0	8.8	1.3	1.8	4.0	2.9	3.3
3200	1.2	3.0	5.2	4.7	1.5	1.1	5.5	4.9	1.7
4000	-0.2	1.0	1.8	1.7	2.8	3.5	6.6	10.6	1.5
5000	-3.0	-3.1	-1.9	-3.4	0.9	2.0	3.6	5.8	-1.4

Single-number rating of Diffraction Index Difference [DL in dB] 0.6

Serie 44, L-top Durisol vlak 160 mm, met 180 mm houten plaat, reflecterend basisscherm.

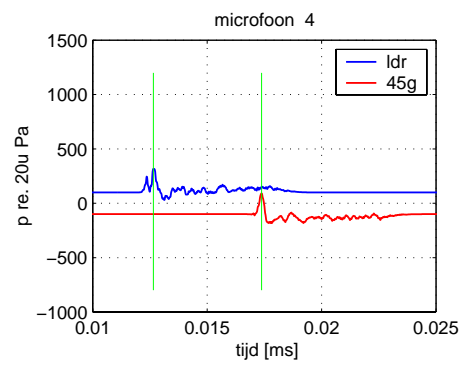
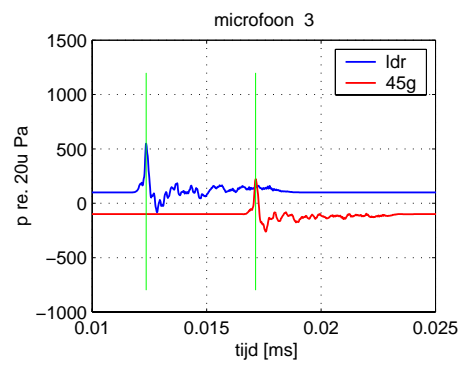
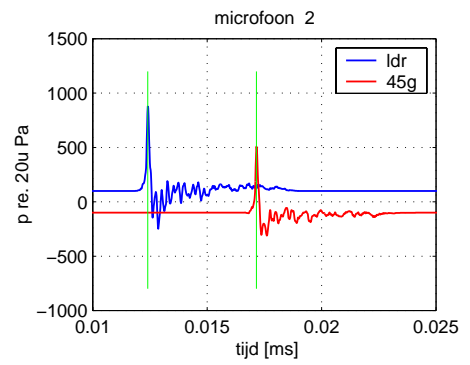
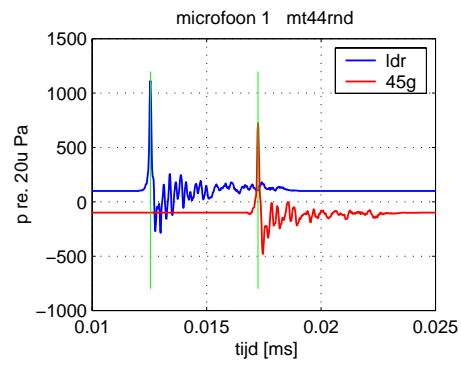


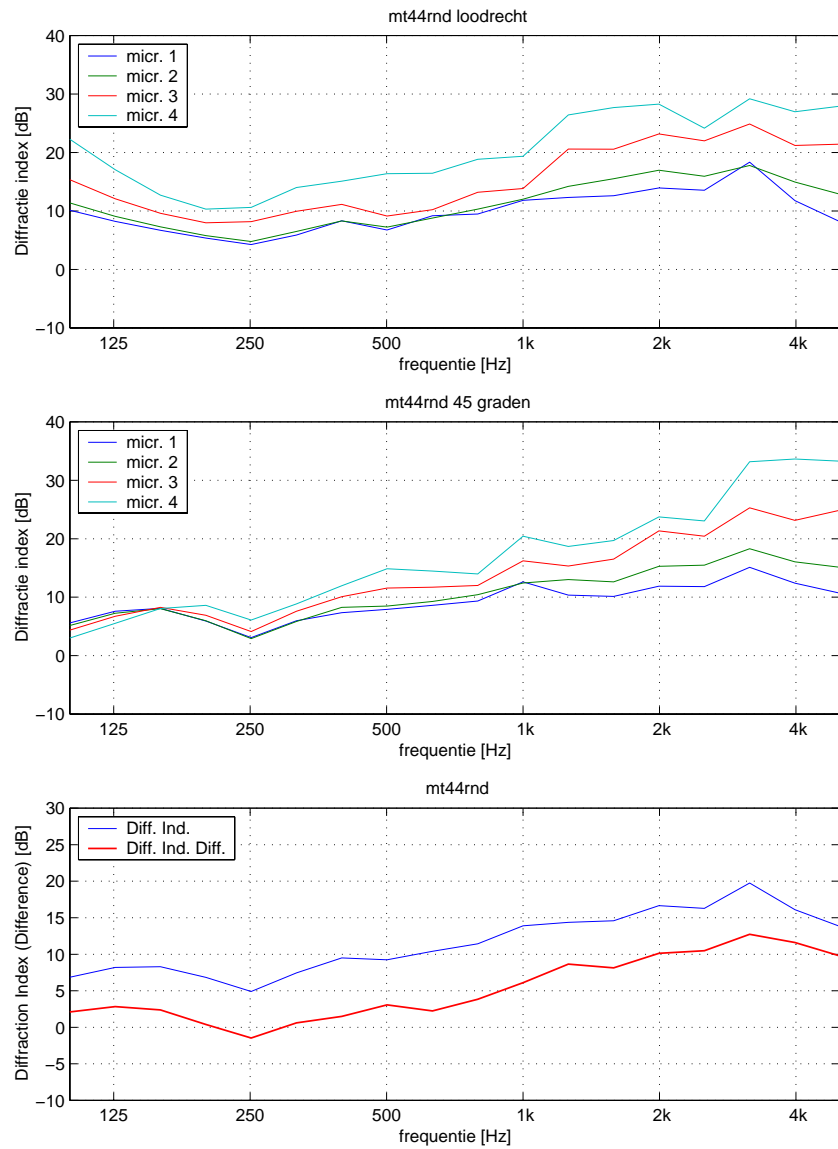
Technische beschrijving L-top Durisol vlak 160 mm (44)

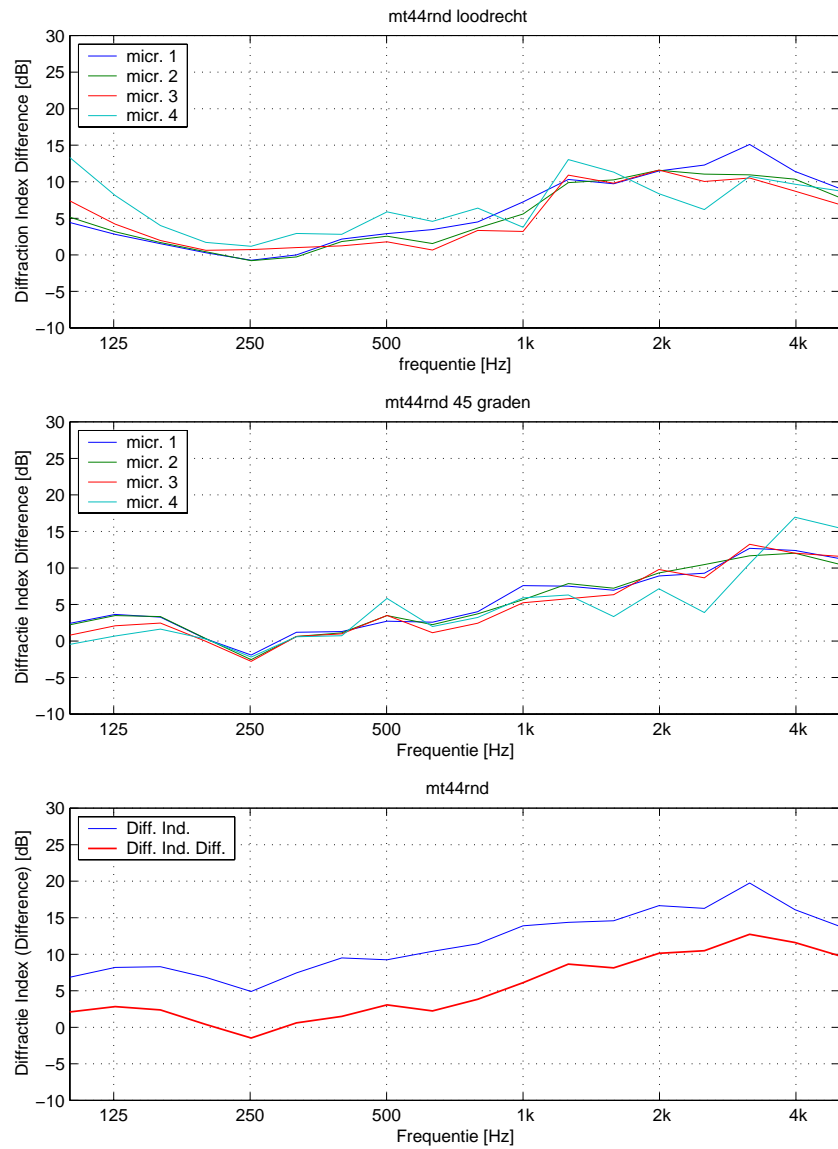
Leverancier: Durisol Raalte bv
Almelosestraat 83
Postbus 40
8100 AA Raalte
Tel.nr. 0572-346499

Het reflecterende basisscherm met het stalen frame op de top is voorzien van 2 meter brede platen van geperst houtvezel van 18 mm dik met daarop de vlakke Durisol houtvezelcementbeton platen van 160 mm dik.

De platen zijn op de top gelegd met behulp van een vorkheftruck.







mt44rnd

Berekende Diffraction Index [DI in dB] per microfoon en totaal

f(Hz)	mic.1	mic.2	mic.3	mic.4	mic.5	mic.6	mic.7	mic.8	DI
100	10.1	11.4	15.3	22.3	5.6	5.2	4.4	3.0	6.9
125	8.2	9.1	12.1	17.1	7.6	7.3	6.7	5.5	8.2
160	6.7	7.3	9.6	12.7	8.1	8.0	8.3	8.1	8.3
200	5.4	5.8	8.0	10.3	5.9	6.0	6.9	8.6	6.8
250	4.3	4.8	8.2	10.6	3.1	2.9	4.1	6.1	4.9
320	5.9	6.5	9.9	14.0	6.0	5.9	7.6	8.8	7.4
400	8.3	8.3	11.1	15.1	7.4	8.3	10.1	12.0	9.5
500	6.7	7.2	9.1	16.4	7.9	8.5	11.6	14.9	9.2
630	9.2	8.8	10.2	16.5	8.6	9.3	11.7	14.5	10.4
800	9.5	10.3	13.2	18.9	9.3	10.4	12.0	14.0	11.4
1000	11.8	12.0	13.8	19.4	12.6	12.4	16.2	20.4	13.9
1250	12.3	14.2	20.6	26.4	10.4	13.0	15.3	18.7	14.4
1600	12.6	15.5	20.6	27.7	10.1	12.6	16.5	19.7	14.6
2000	13.9	17.0	23.2	28.3	11.9	15.3	21.4	23.7	16.7
2500	13.6	15.9	22.0	24.2	11.8	15.5	20.4	23.0	16.3
3200	18.3	17.8	24.9	29.2	15.1	18.3	25.3	33.2	19.7
4000	11.8	15.0	21.2	27.0	12.4	16.0	23.1	33.6	16.1
5000	8.2	12.9	21.4	27.9	10.7	15.1	24.9	33.3	13.8

Berekende Diffraction Index Difference [DID in dB] per microfoon en totaal

f(Hz)	mic.1	mic.2	mic.3	mic.4	mic.5	mic.6	mic.7	mic.8	DID
100	4.4	5.2	7.4	13.3	2.4	2.2	0.8	-0.5	2.1
125	2.8	3.2	4.2	8.1	3.6	3.5	2.1	0.7	2.8
160	1.5	1.7	2.0	4.0	3.3	3.3	2.5	1.6	2.4
200	0.3	0.4	0.6	1.7	0.3	0.3	-0.0	0.3	0.4
250	-0.7	-0.8	0.7	1.2	-1.9	-2.5	-2.8	-2.2	-1.5
320	-0.0	-0.3	1.0	2.9	1.2	0.6	0.6	0.6	0.6
400	2.2	1.8	1.2	2.8	1.3	1.1	1.0	0.7	1.5
500	2.9	2.6	1.8	5.9	2.7	3.5	3.5	5.8	3.1
630	3.5	1.6	0.7	4.6	2.6	2.2	1.1	2.0	2.2
800	4.5	3.7	3.3	6.4	4.0	3.7	2.4	3.2	3.8
1000	7.2	5.6	3.2	3.8	7.6	5.7	5.2	5.9	6.1
1250	10.3	9.9	10.9	13.0	7.5	7.9	5.8	6.3	8.7
1600	9.7	10.3	9.8	11.3	7.0	7.2	6.3	3.4	8.1
2000	11.5	11.6	11.6	8.4	8.9	9.3	9.8	7.1	10.1
2500	12.3	11.1	10.0	6.2	9.3	10.5	8.7	3.9	10.5
3200	15.1	10.9	10.5	10.7	12.7	11.7	13.2	10.6	12.7
4000	11.4	10.4	8.7	9.7	12.4	12.0	12.0	16.9	11.6
5000	9.0	7.8	6.9	8.7	11.3	10.5	11.6	15.5	9.7

Single-number rating of Diffraction Index Difference [DL in dB] 4.4

Serie 44a, L-top Durisol vlak 160 mm, met 180 mm houten plaat, reflecterend basisscherm.



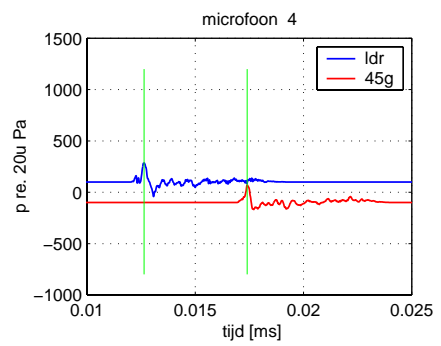
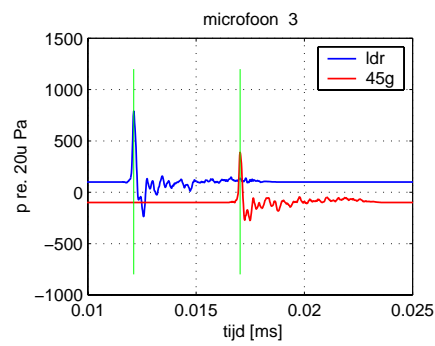
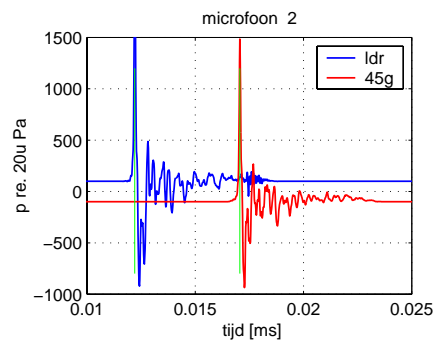
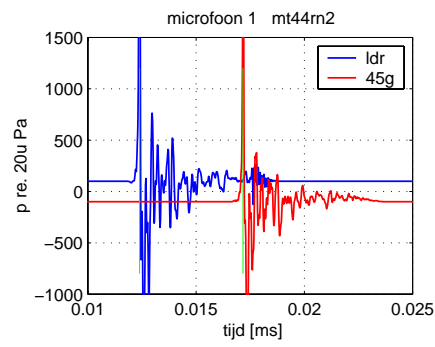
Technische beschrijving L-top Durisol vlak 160 mm (44a)

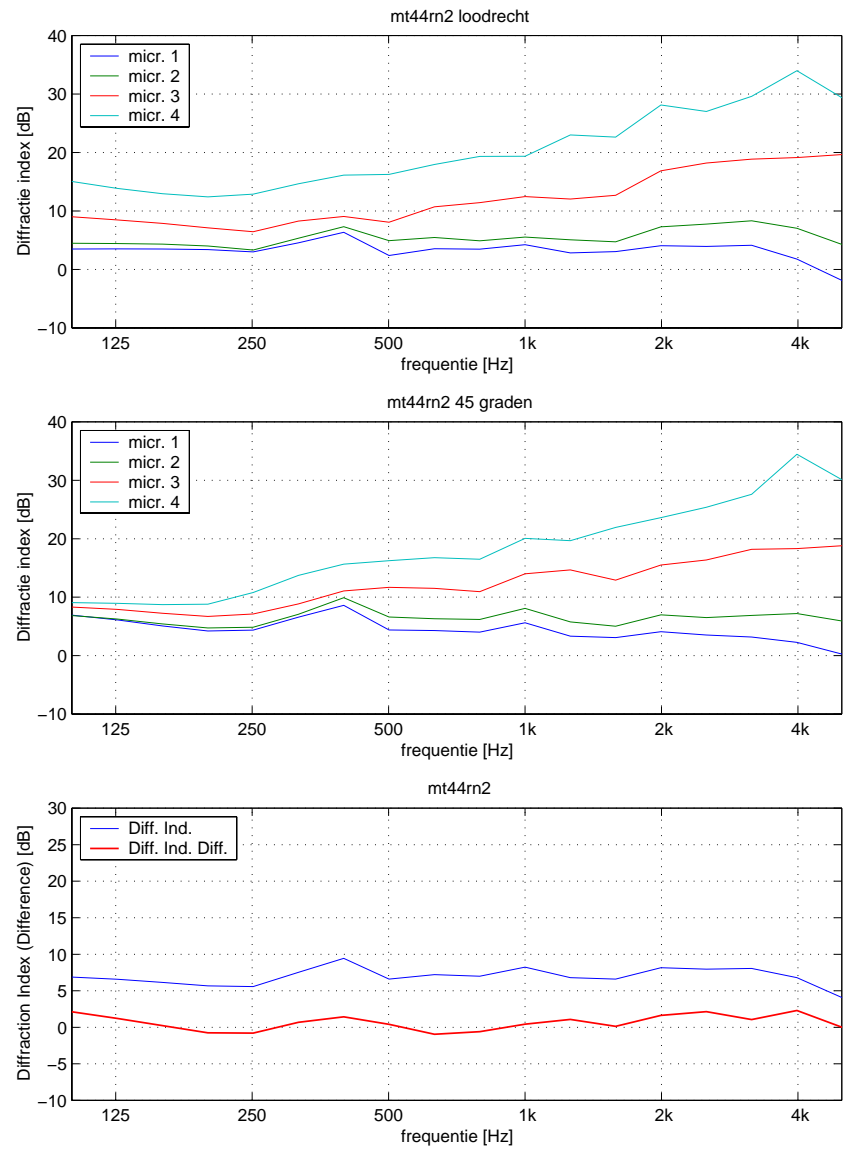
Leverancier: Durisol Raalte bv
Almelosestraat 83
Postbus 40
8100 AA Raalte
Tel.nr. 0572-346499

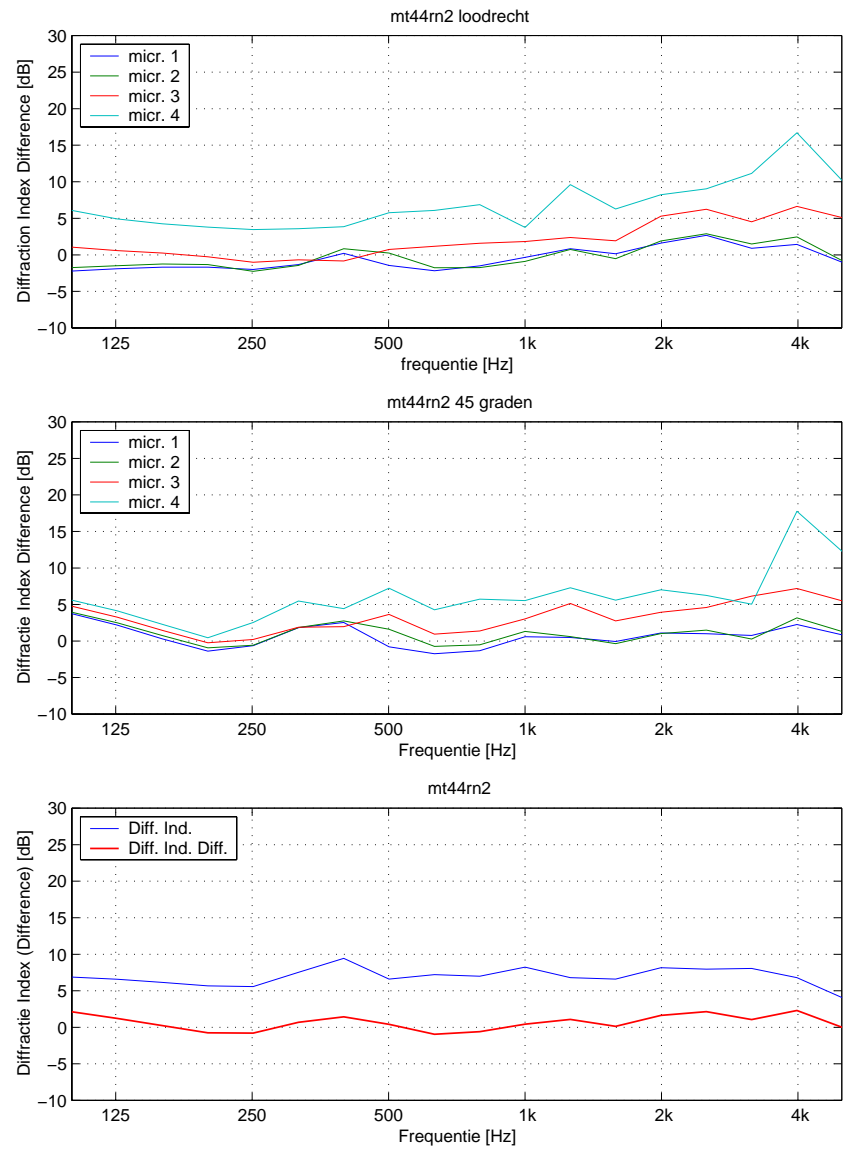
Het reflecterende basisscherm met het stalen frame op de top is voorzien van 2 meter brede platen van geperst houtvezel van 18 mm dik met daarop de vlakke Durisol houtvezelcementbeton platen van 160 mm dik.

De platen zijn op de top gelegd met behulp van een vorkheftruck.

Bij deze metingen zijn de posities van de bron en ontvangerpunten t.o.v. de L-top verwisseld. De ontvangerpunten liggen nu aan de kant van de L-top en de bron staat aan de niet uitgebouwde kant van het scherm.







mt44rn2

Berekende Diffraction Index [DI in dB] per microfoon en totaal

f(Hz)	mic.1	mic.2	mic.3	mic.4	mic.5	mic.6	mic.7	mic.8	DI
100	3.5	4.5	9.0	15.0	6.9	6.9	8.3	9.1	6.9
125	3.5	4.4	8.5	13.9	6.1	6.3	7.9	9.0	6.6
160	3.5	4.3	7.9	13.0	5.1	5.4	7.3	8.7	6.1
200	3.4	4.0	7.1	12.4	4.2	4.7	6.7	8.8	5.7
250	3.0	3.3	6.4	12.9	4.4	4.9	7.1	10.8	5.6
320	4.6	5.3	8.3	14.7	6.6	7.1	8.9	13.7	7.5
400	6.4	7.3	9.1	16.1	8.6	9.9	11.1	15.7	9.4
500	2.4	4.9	8.1	16.3	4.4	6.6	11.7	16.2	6.6
630	3.5	5.5	10.7	18.0	4.3	6.3	11.5	16.8	7.2
800	3.5	4.9	11.4	19.3	4.0	6.2	10.9	16.5	7.0
1000	4.2	5.5	12.5	19.4	5.6	8.1	14.0	20.1	8.2
1250	2.8	5.1	12.1	23.0	3.3	5.8	14.7	19.7	6.8
1600	3.1	4.7	12.7	22.6	3.1	5.0	12.9	21.9	6.6
2000	4.1	7.3	16.9	28.1	4.1	7.0	15.5	23.6	8.2
2500	3.9	7.8	18.2	27.0	3.5	6.5	16.4	25.4	8.0
3200	4.1	8.3	18.9	29.6	3.2	6.9	18.2	27.6	8.1
4000	1.8	7.0	19.1	34.0	2.3	7.2	18.3	34.5	6.8
5000	-1.9	4.3	19.6	29.3	0.2	5.9	18.8	30.1	4.0

Berekende Diffraction Index Difference [DID in dB] per microfoon en totaal

f(Hz)	mic.1	mic.2	mic.3	mic.4	mic.5	mic.6	mic.7	mic.8	DID
100	-2.2	-1.7	1.1	6.1	3.7	3.9	4.8	5.6	2.1
125	-1.9	-1.5	0.6	4.9	2.2	2.5	3.3	4.1	1.2
160	-1.7	-1.2	0.2	4.3	0.3	0.7	1.5	2.3	0.2
200	-1.7	-1.3	-0.3	3.8	-1.4	-0.9	-0.2	0.5	-0.8
250	-2.0	-2.3	-1.0	3.5	-0.6	-0.6	0.2	2.5	-0.8
320	-1.3	-1.5	-0.7	3.6	1.8	1.8	1.9	5.5	0.7
400	0.2	0.8	-0.8	3.8	2.5	2.8	2.0	4.4	1.4
500	-1.4	0.2	0.7	5.8	-0.8	1.6	3.6	7.2	0.4
630	-2.2	-1.8	1.2	6.1	-1.7	-0.7	0.9	4.3	-1.0
800	-1.5	-1.7	1.6	6.9	-1.3	-0.5	1.4	5.7	-0.6
1000	-0.3	-0.9	1.8	3.8	0.6	1.3	3.0	5.5	0.4
1250	0.8	0.7	2.4	9.6	0.5	0.6	5.1	7.3	1.1
1600	0.2	-0.5	1.9	6.3	-0.1	-0.4	2.8	5.6	0.1
2000	1.6	1.9	5.3	8.2	1.1	1.0	3.9	7.0	1.6
2500	2.7	2.9	6.2	9.0	1.0	1.5	4.6	6.2	2.2
3200	0.9	1.5	4.5	11.1	0.8	0.3	6.2	5.0	1.1
4000	1.4	2.5	6.6	16.7	2.3	3.2	7.2	17.8	2.3
5000	-1.0	-0.8	5.1	10.2	0.8	1.3	5.5	12.3	-0.0

Single-number rating of Diffraction Index Difference [DL in dB] 0.4

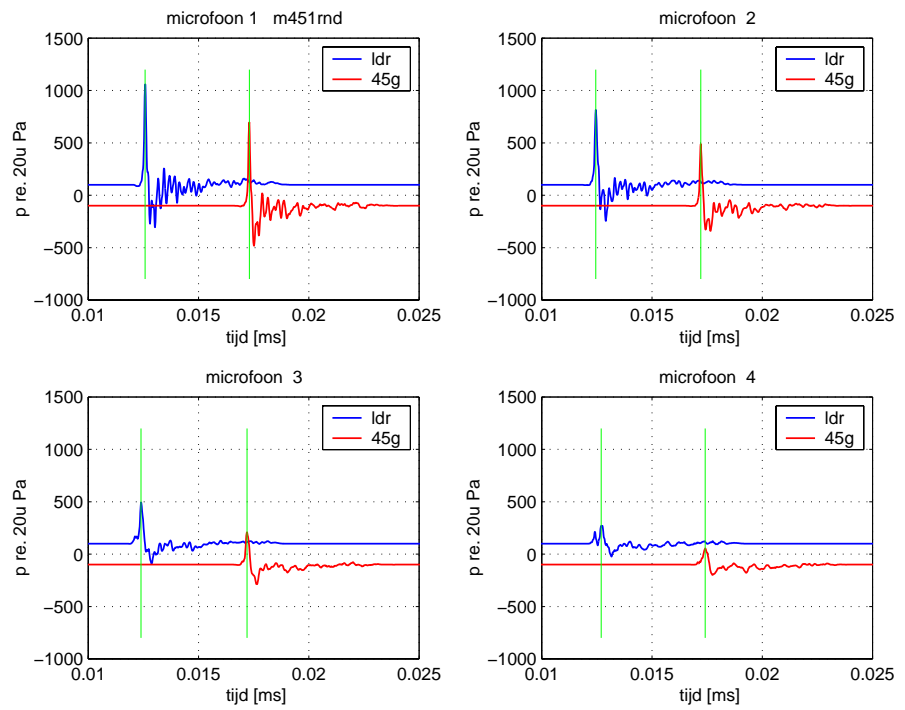
Serie 45, L-top Durisol vlak 160 mm met kantplanken, met 180 mm houten plaat, reflecterend basisscherm.

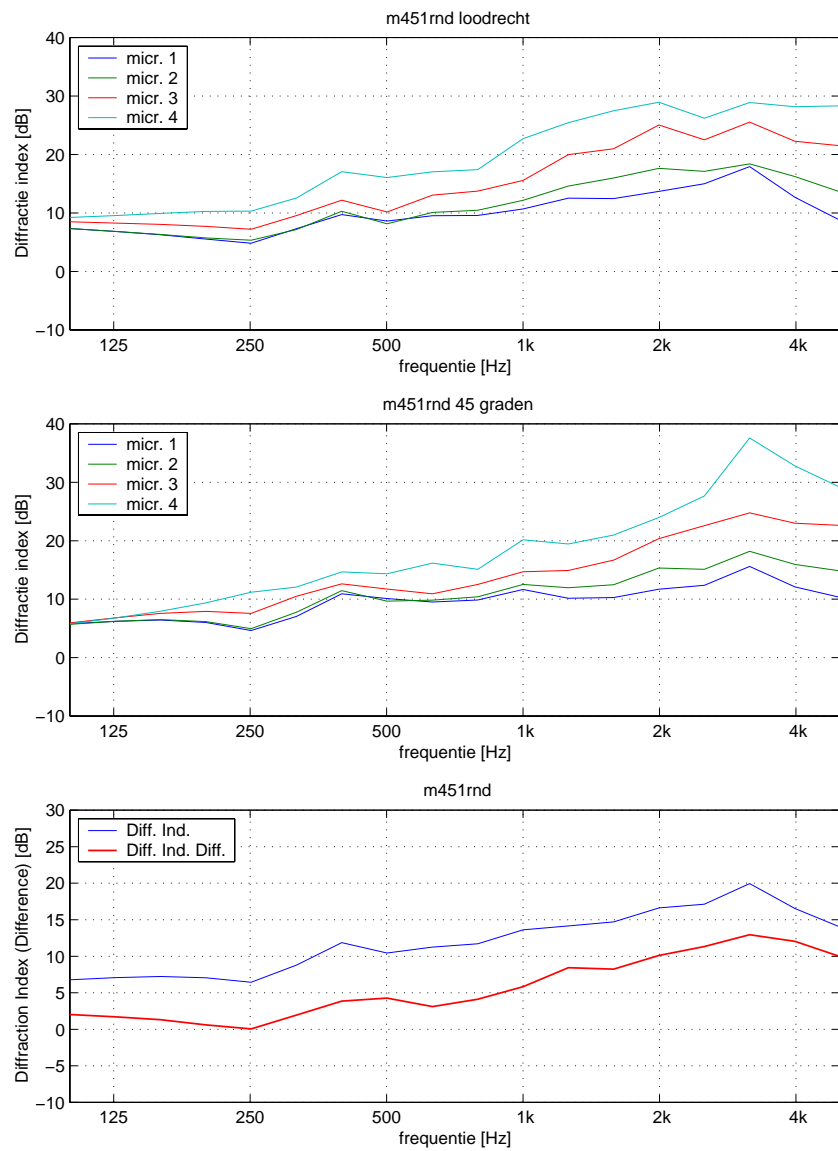
Technische beschrijving L-top Durisol vlak 160 mm (45)

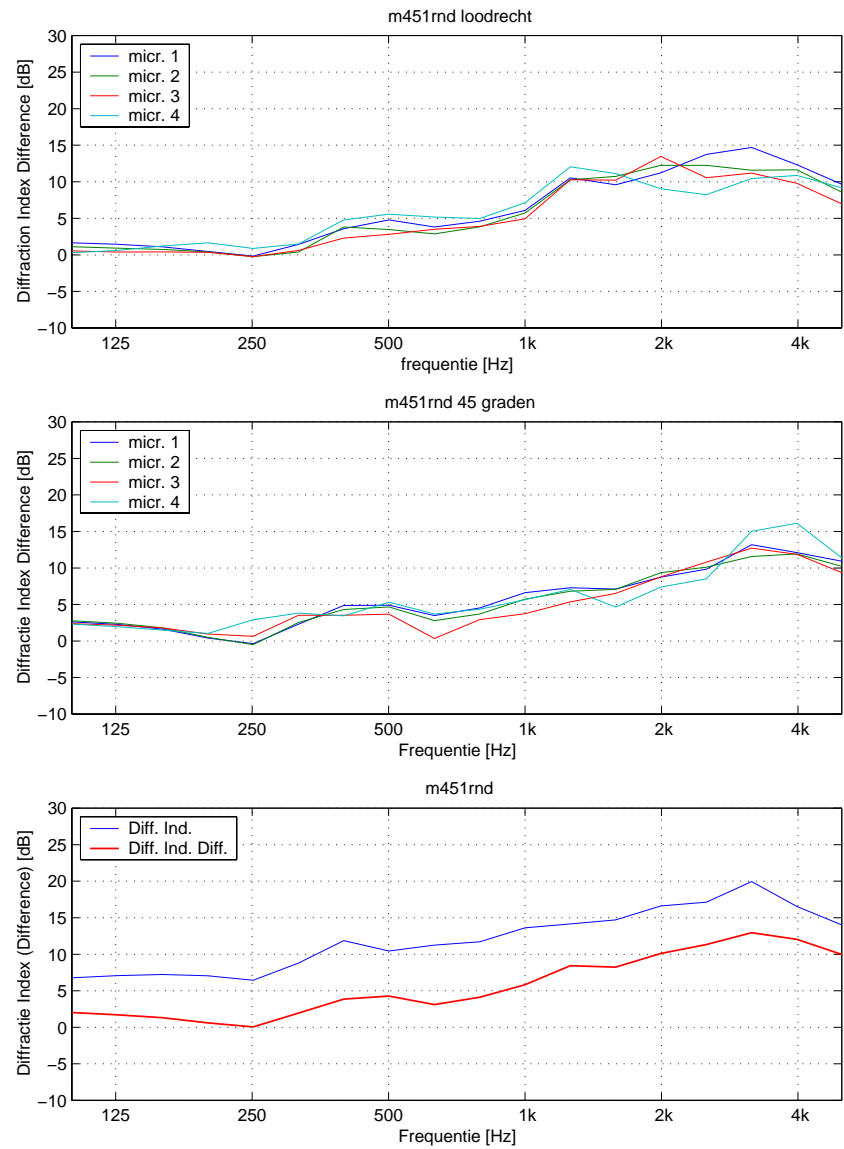
Leverancier: Durisol Raalte bv
Almelosestraat 83
Postbus 40
8100 AA Raalte
Tel.nr. 0572-346499

Het reflecterende basisscherm met het stalen frame op de top is voorzien van 2 meter brede platen van geperst houtvezel van 18 mm dik met daarop de vlakke Durisol houtvezelcementbeton platen van 160 mm dik. De kopse kanten van de Durisol profiel platen zijn voorzien van 160 mm hoge houten randen van 18 mm dik geperst houtvezel plaat.

De platen zijn op de top gelegd met behulp van een vorkheftruck.







m451rnd

Berekende Diffraction Index [DI in dB] per microfoon en totaal

f(Hz)	mic.1	mic.2	mic.3	mic.4	mic.5	mic.6	mic.7	mic.8	DI
100	7.4	7.3	8.5	9.2	5.8	5.7	5.9	5.8	6.8
125	6.9	6.8	8.3	9.5	6.2	6.2	6.8	6.8	7.1
160	6.3	6.3	8.0	9.9	6.4	6.5	7.6	7.9	7.2
200	5.5	5.8	7.7	10.3	6.0	6.2	7.9	9.4	7.0
250	4.8	5.3	7.2	10.3	4.6	5.0	7.6	11.2	6.4
320	7.3	7.2	9.6	12.6	7.1	7.8	10.5	12.1	8.8
400	9.7	10.3	12.2	17.1	10.9	11.5	12.6	14.7	11.9
500	8.6	8.1	10.2	16.1	10.1	9.7	11.7	14.3	10.5
630	9.5	10.1	13.0	17.1	9.5	9.8	10.9	16.2	11.3
800	9.6	10.5	13.7	17.4	9.9	10.4	12.5	15.1	11.7
1000	10.7	12.2	15.6	22.7	11.7	12.5	14.7	20.2	13.6
1250	12.5	14.6	20.0	25.5	10.1	12.0	14.9	19.5	14.2
1600	12.5	16.0	21.0	27.5	10.3	12.5	16.7	21.0	14.7
2000	13.7	17.6	25.0	28.9	11.7	15.3	20.4	24.0	16.6
2500	15.0	17.1	22.5	26.2	12.4	15.1	22.6	27.7	17.1
3200	17.9	18.4	25.6	28.9	15.6	18.2	24.8	37.6	20.0
4000	12.7	16.2	22.3	28.2	12.1	15.9	23.0	32.8	16.5
5000	8.7	13.6	21.5	28.3	10.3	14.8	22.6	29.1	14.0

Berekende Diffraction Index Difference [DID in dB] per microfoon en totaal

f(Hz)	mic.1	mic.2	mic.3	mic.4	mic.5	mic.6	mic.7	mic.8	DID
100	1.7	1.1	0.5	0.3	2.6	2.8	2.4	2.3	2.0
125	1.4	0.9	0.4	0.6	2.3	2.4	2.2	2.0	1.7
160	1.1	0.7	0.4	1.2	1.6	1.8	1.8	1.5	1.3
200	0.5	0.4	0.3	1.6	0.4	0.5	1.0	1.0	0.6
250	-0.2	-0.2	-0.3	0.9	-0.4	-0.5	0.7	2.9	0.1
320	1.4	0.4	0.6	1.5	2.3	2.5	3.5	3.8	1.9
400	3.6	3.8	2.3	4.8	4.9	4.3	3.5	3.5	3.9
500	4.8	3.5	2.8	5.6	4.9	4.7	3.7	5.3	4.3
630	3.8	2.9	3.5	5.2	3.5	2.8	0.4	3.7	3.1
800	4.6	3.8	3.9	5.0	4.5	3.7	2.9	4.4	4.1
1000	6.1	5.7	4.9	7.1	6.6	5.7	3.7	5.7	5.8
1250	10.5	10.3	10.3	12.0	7.3	6.8	5.4	7.1	8.4
1600	9.6	10.7	10.2	11.1	7.1	7.1	6.5	4.6	8.2
2000	11.2	12.3	13.5	9.0	8.7	9.3	8.8	7.4	10.1
2500	13.7	12.2	10.5	8.2	9.8	10.1	10.8	8.5	11.3
3200	14.7	11.6	11.2	10.4	13.2	11.6	12.7	15.0	12.9
4000	12.3	11.6	9.8	10.9	12.1	11.9	11.9	16.1	12.0
5000	9.6	8.5	6.9	9.1	10.9	10.2	9.3	11.3	9.9

Single-number rating of Diffraction Index Difference [DL in dB] 5.0

Serie 46, L-top Durisol 160 mm vlak, zonder 180 mm houten plaat, reflecterend basisscherm.

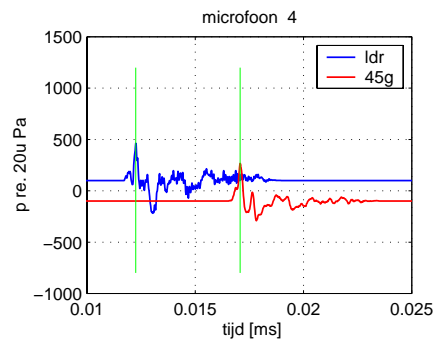
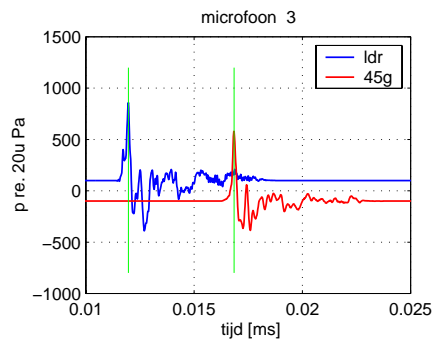
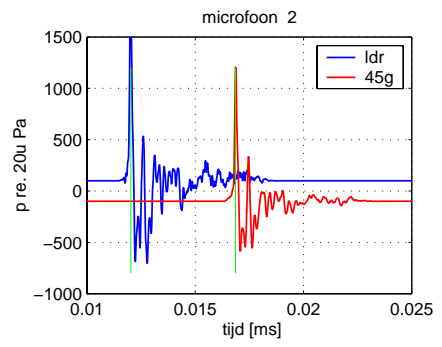
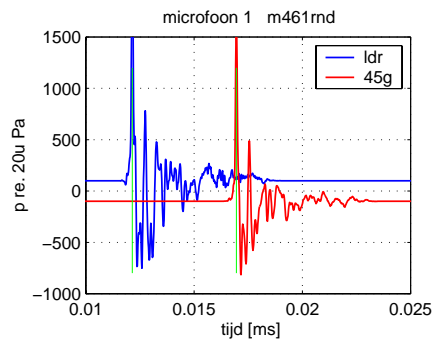


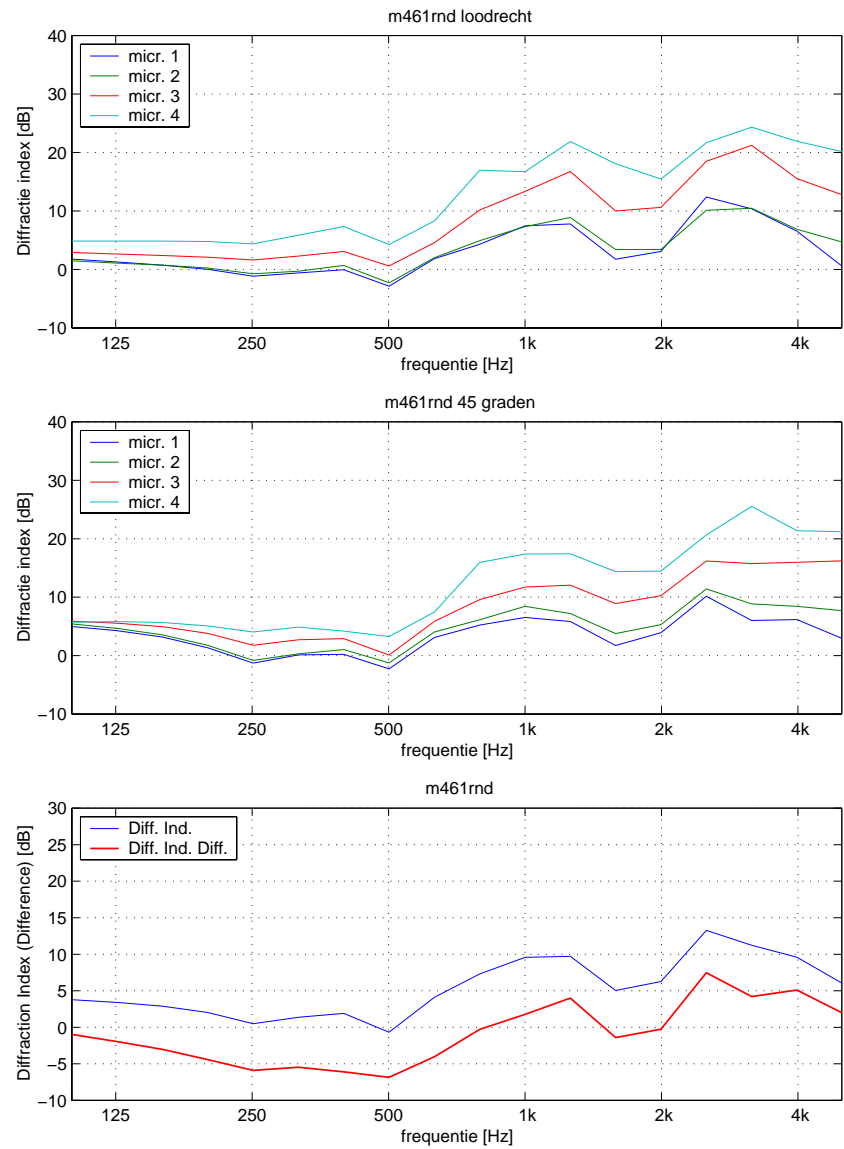
Technische beschrijving L-top Durisol vlak 160 mm (46)

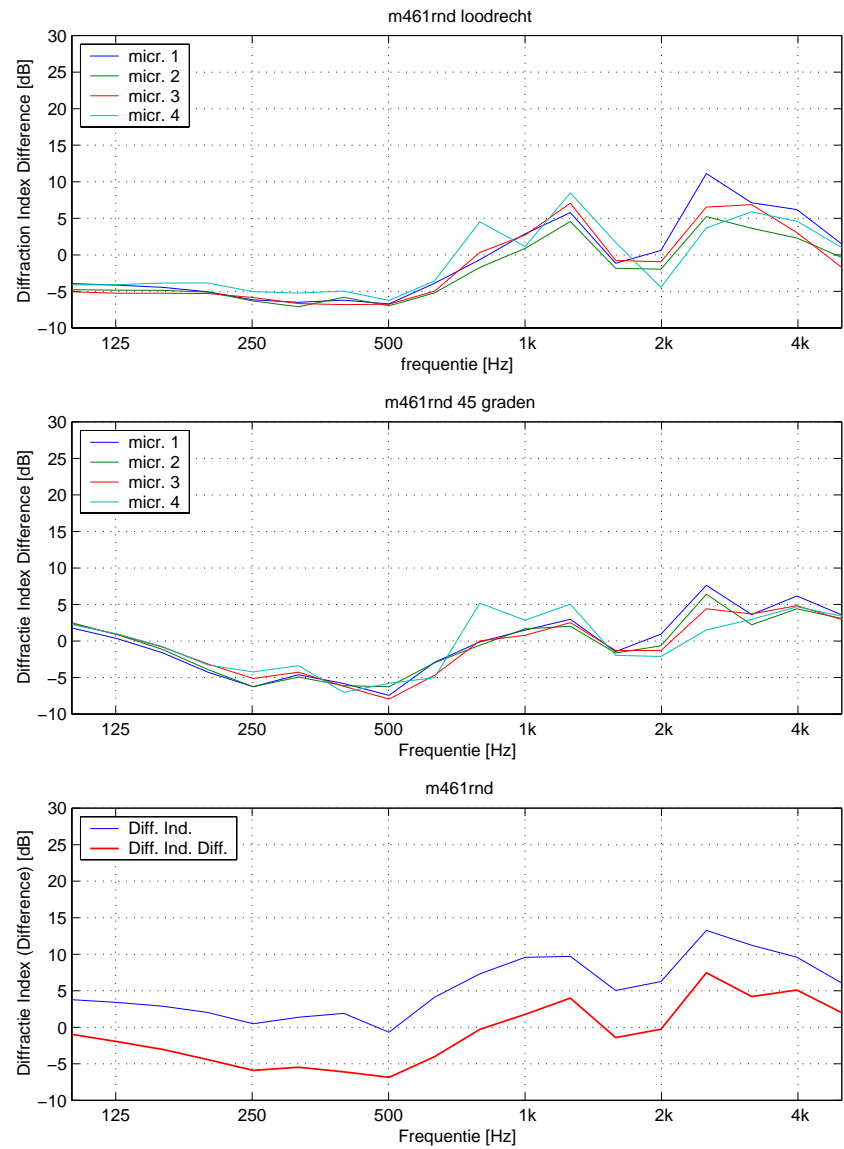
Leverancier: Durisol Raalte bv
Almelosestraat 83
Postbus 40
8100 AA Raalte
Tel.nr. 0572-346499

Het reflecterende basisscherm met het stalen frame op de top met daarop de vlakke Durisol houtvezelcementbeton platen van 160 mm dik.

De platen zijn op de top gelegd met behulp van een vorkheftruck.







m461rnd

Berekende Diffraction Index [DI in dB] per microfoon en totaal

f(Hz)	mic.1	mic.2	mic.3	mic.4	mic.5	mic.6	mic.7	mic.8	DI
100	1.8	1.5	2.9	4.9	5.0	5.4	5.9	5.7	3.8
125	1.3	1.1	2.6	4.8	4.3	4.7	5.5	5.8	3.4
160	0.7	0.7	2.4	4.9	3.2	3.5	4.9	5.7	2.9
200	0.0	0.3	2.1	4.8	1.3	1.7	3.8	5.1	2.0
250	-1.2	-0.7	1.6	4.4	-1.3	-0.8	1.8	4.0	0.5
320	-0.6	-0.3	2.3	5.9	0.1	0.3	2.7	4.9	1.4
400	-0.0	0.7	3.1	7.3	0.2	1.0	2.9	4.2	1.9
500	-2.9	-2.3	0.6	4.3	-2.3	-1.3	0.1	3.3	-0.7
630	1.8	2.0	4.6	8.3	3.1	4.0	5.9	7.5	4.1
800	4.3	4.9	10.2	17.0	5.2	6.1	9.6	15.9	7.3
1000	7.5	7.3	13.3	16.7	6.5	8.4	11.7	17.4	9.6
1250	7.8	8.9	16.7	21.9	5.8	7.2	12.1	17.4	9.7
1600	1.7	3.4	10.0	18.1	1.7	3.8	8.9	14.4	5.1
2000	3.1	3.4	10.6	15.5	3.9	5.3	10.3	14.5	6.3
2500	12.4	10.1	18.5	21.7	10.2	11.4	16.2	20.7	13.3
3200	10.4	10.5	21.2	24.3	6.0	8.8	15.8	25.5	11.2
4000	6.5	6.9	15.5	21.9	6.2	8.4	16.0	21.4	9.6
5000	0.5	4.7	12.8	20.1	2.9	7.7	16.2	21.2	6.0

Berekende Diffraction Index Difference [DID in dB] per microfoon en totaal

f(Hz)	mic.1	mic.2	mic.3	mic.4	mic.5	mic.6	mic.7	mic.8	DID
100	-3.9	-4.8	-5.1	-4.1	1.8	2.5	2.3	2.3	-1.0
125	-4.1	-4.8	-5.3	-4.1	0.3	0.9	0.9	1.0	-2.0
160	-4.4	-4.9	-5.3	-3.9	-1.6	-1.1	-0.8	-0.8	-3.0
200	-5.1	-5.1	-5.3	-3.8	-4.3	-3.9	-3.1	-3.3	-4.4
250	-6.2	-6.3	-5.8	-5.0	-6.3	-6.3	-5.1	-4.2	-5.9
320	-6.5	-7.1	-6.7	-5.2	-4.6	-4.9	-4.3	-3.4	-5.5
400	-6.2	-5.8	-6.8	-5.0	-5.8	-6.1	-6.2	-7.0	-6.1
500	-6.7	-7.0	-6.8	-6.2	-7.4	-6.2	-8.0	-5.8	-6.9
630	-3.9	-5.2	-5.0	-3.6	-2.9	-3.0	-4.7	-5.0	-4.0
800	-0.7	-1.7	0.3	4.5	-0.1	-0.6	0.0	5.2	-0.3
1000	2.9	0.9	2.7	1.1	1.5	1.7	0.8	2.9	1.8
1250	5.8	4.6	7.1	8.5	3.0	2.0	2.5	5.0	4.0
1600	-1.2	-1.8	-0.8	1.7	-1.4	-1.6	-1.3	-2.0	-1.4
2000	0.6	-2.0	-1.0	-4.4	0.9	-0.7	-1.3	-2.1	-0.3
2500	11.1	5.2	6.5	3.7	7.6	6.4	4.4	1.5	7.5
3200	7.1	3.6	6.9	5.9	3.6	2.2	3.7	3.0	4.2
4000	6.2	2.3	3.1	4.6	6.2	4.4	4.9	4.7	5.1
5000	1.4	-0.4	-1.8	1.0	3.5	3.1	2.9	3.4	2.0

Single-number rating of Diffraction Index Difference [DL in dB] -2.0

Serie 46a, L-top Durisol 160 mm vlak, zonder 180 mm houten plaat, reflecterend basisscherm.



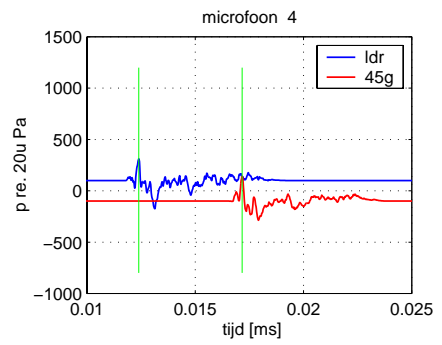
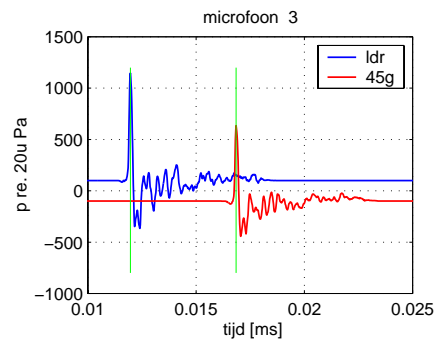
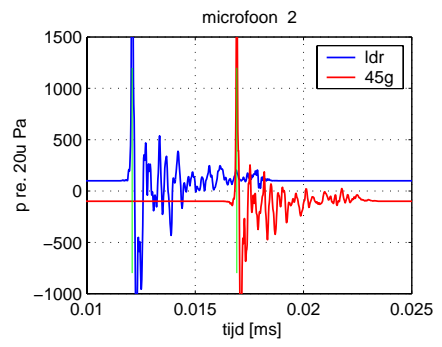
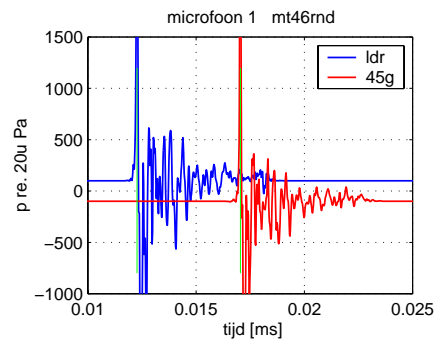
Technische beschrijving L-top Durisol vlak 160 mm (46a)

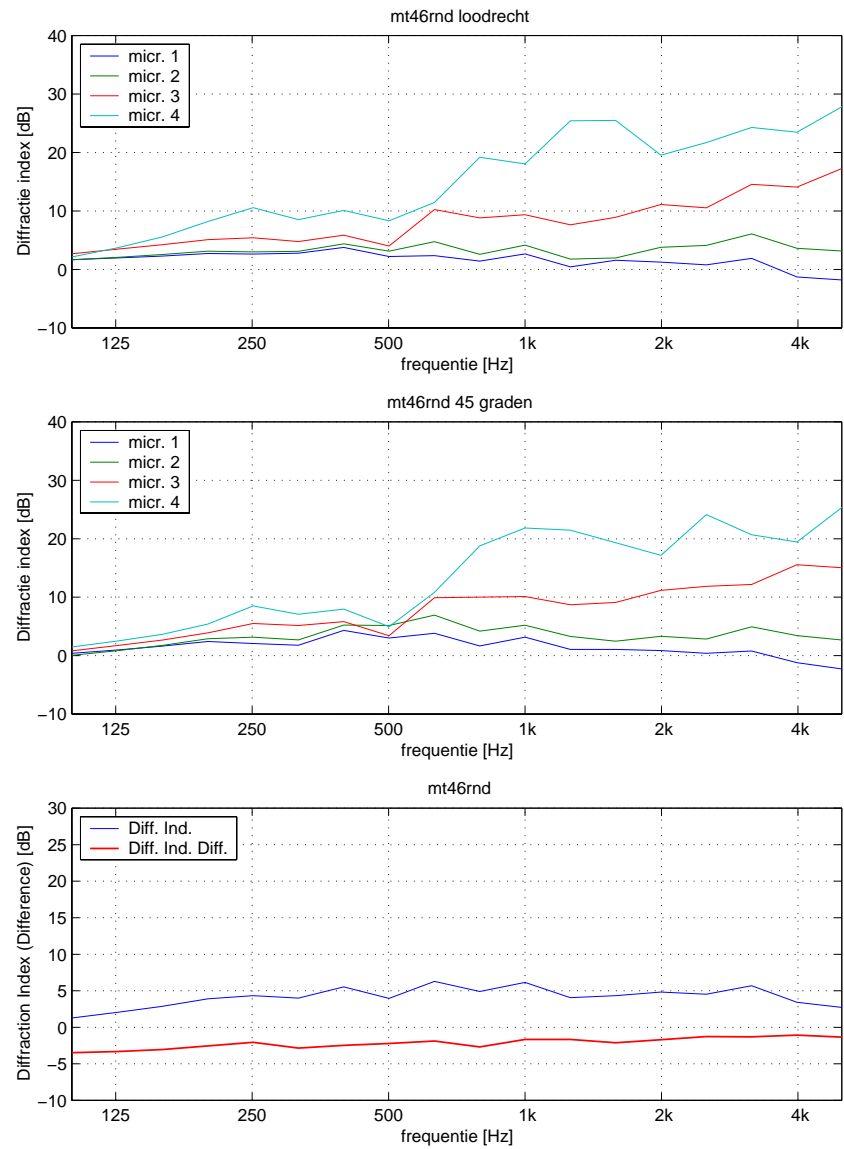
Leverancier: Durisol Raalte bv
Almelosestraat 83
Postbus 40
8100 AA Raalte
Tel.nr. 0572-346499

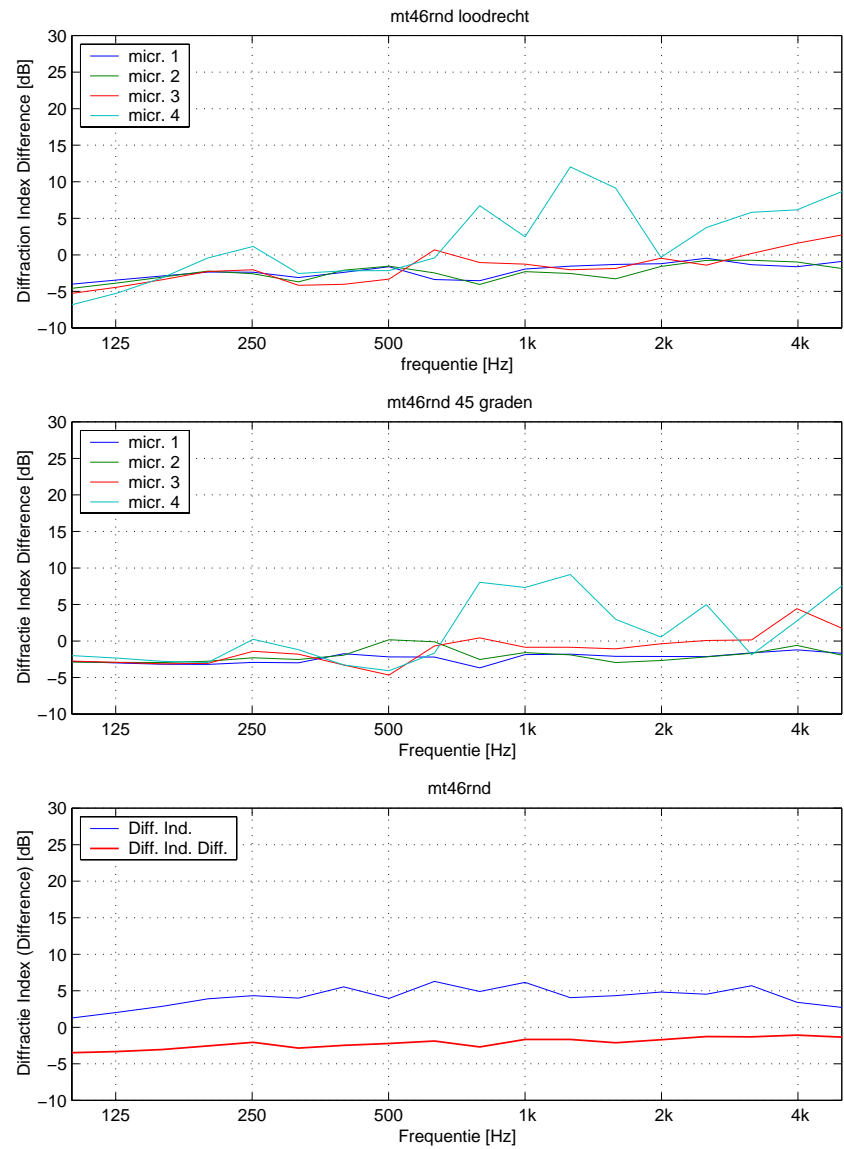
Het reflecterende basisscherm met het stalen frame op de top met daarop de vlakke Durisol houtvezelcementbeton platen van 160 mm dik.

De platen zijn op de top gelegd met behulp van een vorkheftruck.

Bij deze metingen zijn de posities van de bron en ontvangerpunten t.o.v. de L-top verwisseld. De ontvangerpunten liggen nu aan de kant van de L-top en de bron staat aan de niet uitgebouwde kant van het scherm.







mt46rnd

Berekende Diffraction Index [DI in dB] per microfoon en totaal

f(Hz)	mic.1	mic.2	mic.3	mic.4	mic.5	mic.6	mic.7	mic.8	DI
100	1.7	1.6	2.7	2.1	0.4	0.0	0.8	1.5	1.3
125	2.0	2.1	3.5	3.7	1.0	0.8	1.7	2.5	2.0
160	2.3	2.6	4.2	5.6	1.6	1.8	2.7	3.7	2.9
200	2.7	3.1	5.1	8.2	2.4	2.9	3.9	5.4	3.9
250	2.6	3.0	5.4	10.6	2.1	3.2	5.5	8.5	4.3
320	2.8	3.1	4.8	8.5	1.8	2.7	5.2	7.1	4.0
400	3.8	4.4	5.9	10.1	4.3	5.2	5.8	8.0	5.5
500	2.2	3.1	4.0	8.3	3.0	5.2	3.4	5.0	4.0
630	2.4	4.8	10.2	11.5	3.8	6.9	9.9	10.8	6.3
800	1.4	2.6	8.8	19.2	1.7	4.2	10.0	18.8	4.9
1000	2.7	4.2	9.4	18.1	3.2	5.2	10.1	21.9	6.1
1250	0.5	1.8	7.6	25.4	1.1	3.3	8.7	21.5	4.1
1600	1.6	2.0	8.9	25.5	1.1	2.5	9.1	19.3	4.3
2000	1.3	3.8	11.1	19.6	0.9	3.3	11.2	17.1	4.8
2500	0.8	4.1	10.5	21.7	0.4	2.8	11.9	24.1	4.5
3200	1.9	6.1	14.6	24.3	0.8	4.9	12.2	20.7	5.7
4000	-1.3	3.6	14.1	23.5	-1.2	3.4	15.6	19.5	3.4
5000	-1.8	3.2	17.3	27.9	-2.3	2.7	15.0	25.4	2.7

Berekende Diffraction Index Difference [DID in dB] per microfoon en totaal

f(Hz)	mic.1	mic.2	mic.3	mic.4	mic.5	mic.6	mic.7	mic.8	DID
100	-4.0	-4.6	-5.3	-6.8	-2.8	-2.9	-2.8	-2.0	-3.5
125	-3.4	-3.8	-4.4	-5.2	-3.0	-2.9	-2.9	-2.3	-3.3
160	-2.9	-3.0	-3.4	-3.1	-3.2	-2.9	-3.1	-2.8	-3.0
200	-2.4	-2.2	-2.3	-0.4	-3.2	-2.8	-3.1	-2.9	-2.5
250	-2.4	-2.6	-2.0	1.1	-2.9	-2.3	-1.4	0.2	-2.0
320	-3.1	-3.7	-4.2	-2.6	-3.0	-2.5	-1.8	-1.2	-2.8
400	-2.4	-2.1	-4.0	-2.2	-1.7	-1.9	-3.3	-3.3	-2.5
500	-1.6	-1.5	-3.3	-2.2	-2.2	0.2	-4.7	-4.1	-2.2
630	-3.4	-2.5	0.7	-0.4	-2.2	-0.1	-0.7	-1.7	-1.9
800	-3.5	-4.0	-1.0	6.7	-3.7	-2.5	0.4	8.0	-2.7
1000	-1.9	-2.3	-1.3	2.5	-1.9	-1.6	-0.9	7.3	-1.7
1250	-1.6	-2.6	-2.0	12.0	-1.8	-1.9	-0.8	9.1	-1.7
1600	-1.3	-3.3	-1.9	9.1	-2.1	-2.9	-1.1	3.0	-2.1
2000	-1.2	-1.6	-0.5	-0.3	-2.1	-2.7	-0.4	0.6	-1.7
2500	-0.5	-0.8	-1.4	3.7	-2.1	-2.2	0.1	5.0	-1.3
3200	-1.4	-0.7	0.2	5.8	-1.6	-1.7	0.1	-1.9	-1.3
4000	-1.6	-1.0	1.6	6.2	-1.2	-0.6	4.4	2.8	-1.1
5000	-0.9	-1.9	2.7	8.7	-1.7	-2.0	1.7	7.6	-1.3

Single-number rating of Diffraction Index Difference [DL in dB] -2.0

Serie 47, L-top Durisol vlak 160 mm, zonder 180 mm houten plaat, absorberend basisscherm.

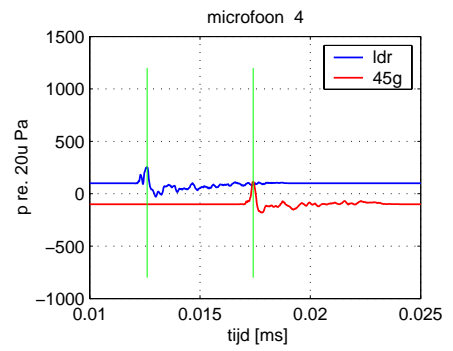
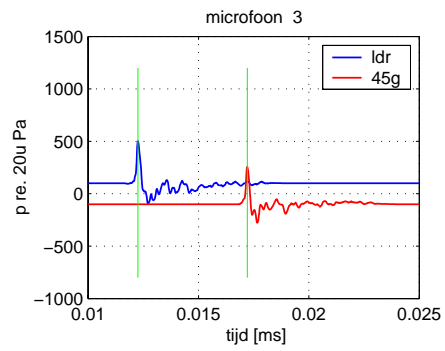
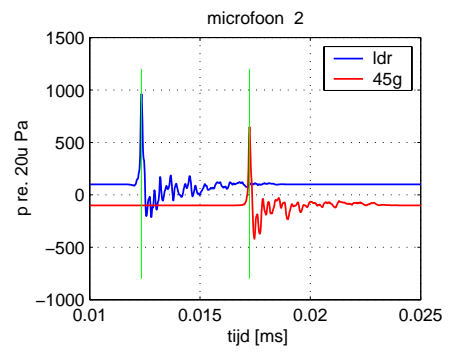
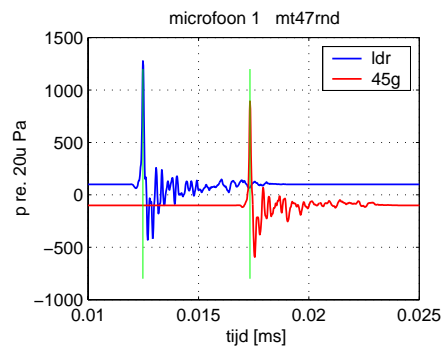


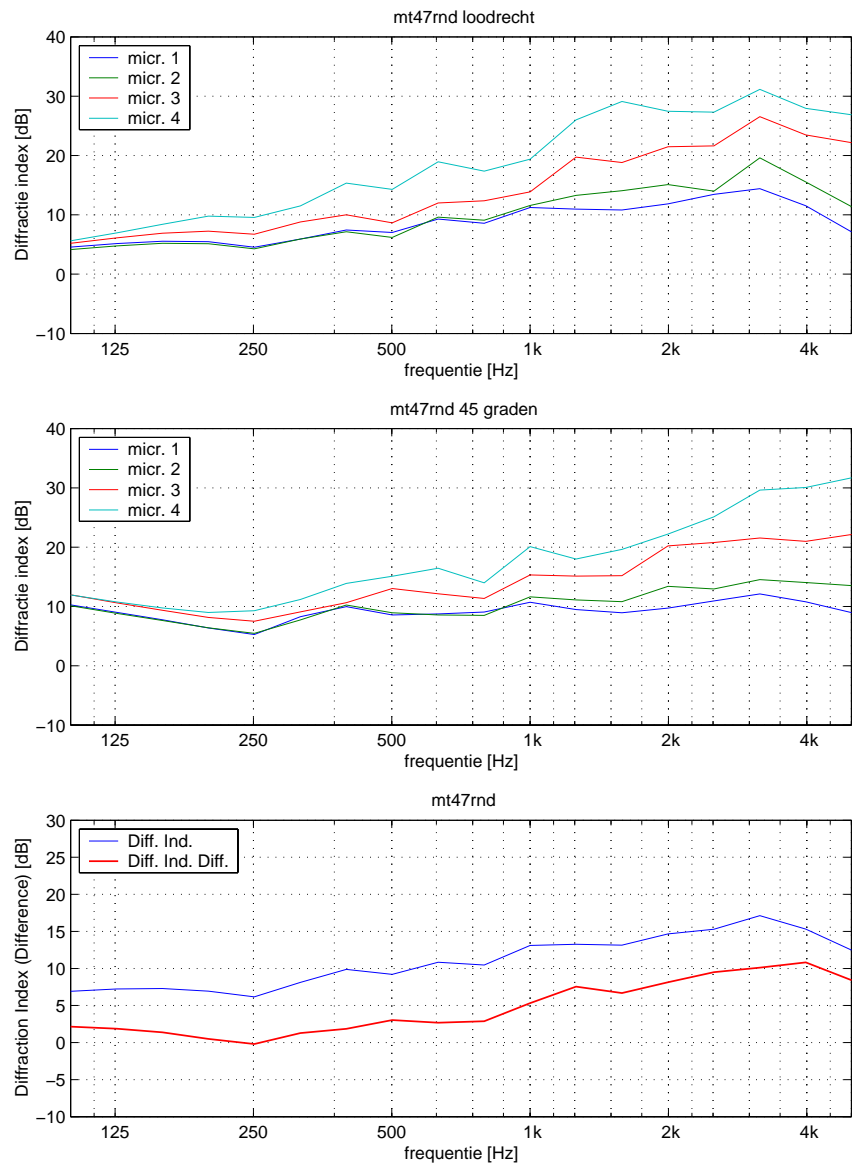
Technische beschrijving L-top Durisol vlak 160 mm (47)

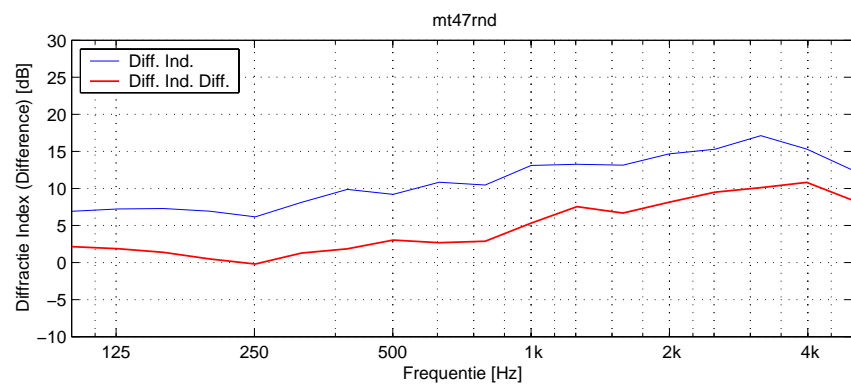
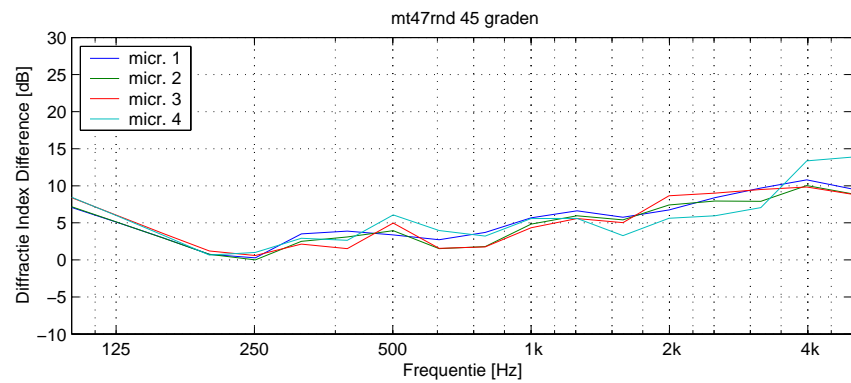
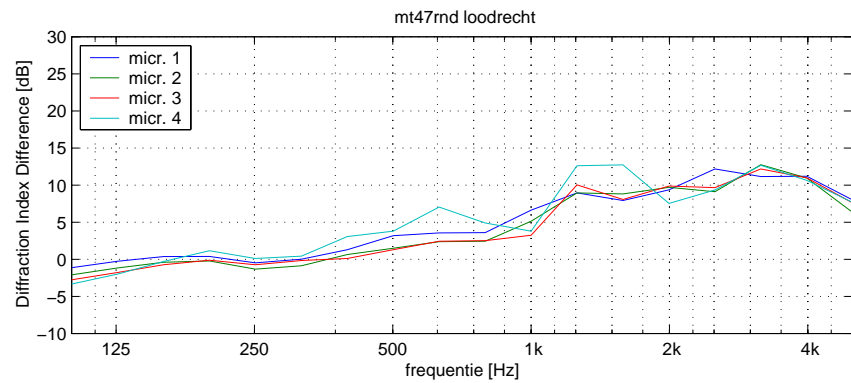
Leverancier: Durisol Raalte bv
Almelosestraat 83
Postbus 40
8100 AA Raalte
Tel.nr. 0572-346499

Het absorberende basisscherm met het stalen frame op de top is voorzien van 2 meter brede platen van geperst houtvezel van 18 mm dik met daarop de vlakke Durisol houtvezelcementbeton platen van 160 mm dik.

De platen zijn op de top gelegd met behulp van een vorkheftruck.







mt47rnd

Berekende Diffraction Index [DI in dB] per microfoon en totaal

f(Hz)	mic.1	mic.2	mic.3	mic.4	mic.5	mic.6	mic.7	mic.8	DI
100	4.6	4.1	5.2	5.6	10.3	10.1	12.0	11.9	6.9
125	5.1	4.8	6.1	6.9	9.0	8.8	10.6	10.8	7.2
160	5.6	5.2	6.9	8.4	7.7	7.6	9.3	9.7	7.3
200	5.5	5.1	7.3	9.8	6.4	6.4	8.2	9.0	6.9
250	4.5	4.3	6.7	9.5	5.3	5.4	7.5	9.3	6.2
320	5.9	5.9	8.8	11.5	8.3	7.7	9.1	11.2	8.1
400	7.5	7.1	10.0	15.3	10.0	10.2	10.6	13.9	9.9
500	7.0	6.2	8.7	14.3	8.6	8.9	13.0	15.1	9.2
630	9.3	9.6	12.0	18.9	8.7	8.6	12.1	16.4	10.8
800	8.6	9.1	12.4	17.4	9.0	8.5	11.3	14.0	10.5
1000	11.2	11.6	13.9	19.4	10.7	11.6	15.3	20.1	13.1
1250	11.0	13.3	19.7	26.0	9.5	11.1	15.1	18.0	13.3
1600	10.8	14.1	18.8	29.1	8.9	10.8	15.2	19.6	13.1
2000	11.8	15.1	21.5	27.4	9.7	13.4	20.2	22.2	14.7
2500	13.4	14.0	21.6	27.3	10.9	12.9	20.8	25.1	15.3
3200	14.4	19.6	26.5	31.1	12.1	14.5	21.5	29.6	17.1
4000	11.5	15.6	23.5	28.0	10.8	14.0	21.0	30.1	15.3
5000	7.1	11.4	22.1	26.8	8.9	13.5	22.1	31.7	12.4

Berekende Diffraction Index Difference [DID in dB] per microfoon en totaal

f(Hz)	mic.1	mic.2	mic.3	mic.4	mic.5	mic.6	mic.7	mic.8	DID
100	-1.1	-2.1	-2.8	-3.3	7.1	7.2	8.4	8.4	2.1
125	-0.3	-1.2	-1.8	-2.0	5.0	5.1	6.0	5.9	1.9
160	0.4	-0.4	-0.7	-0.3	3.0	2.9	3.6	3.3	1.4
200	0.4	-0.2	-0.1	1.2	0.7	0.7	1.2	0.6	0.5
250	-0.5	-1.3	-0.7	0.1	0.3	-0.0	0.6	1.0	-0.2
320	0.0	-0.9	-0.2	0.4	3.5	2.5	2.1	2.9	1.3
400	1.3	0.7	0.1	3.1	3.9	3.1	1.5	2.6	1.9
500	3.2	1.5	1.3	3.8	3.4	3.9	5.0	6.1	3.0
630	3.6	2.4	2.4	7.1	2.7	1.5	1.6	4.0	2.7
800	3.6	2.4	2.5	4.9	3.7	1.8	1.8	3.2	2.9
1000	6.6	5.1	3.2	3.8	5.7	4.8	4.3	5.6	5.3
1250	9.0	9.0	10.0	12.6	6.6	5.9	5.6	5.6	7.5
1600	7.9	8.8	8.1	12.7	5.8	5.4	5.0	3.3	6.7
2000	9.4	9.7	9.9	7.5	6.7	7.4	8.6	5.6	8.1
2500	12.2	9.1	9.7	9.3	8.4	7.9	9.0	6.0	9.5
3200	11.2	12.8	12.2	12.7	9.7	7.9	9.5	7.1	10.1
4000	11.2	11.0	11.0	10.7	10.8	10.0	9.8	13.4	10.8
5000	8.0	6.3	7.6	7.7	9.5	8.9	8.8	13.9	8.4

Single-number rating of Diffraction Index Difference [DL in dB] 4.2

Serie 49, L-top Durisol vlak 70 mm, met 180 mm houten plaat, reflecterend basisscherm.

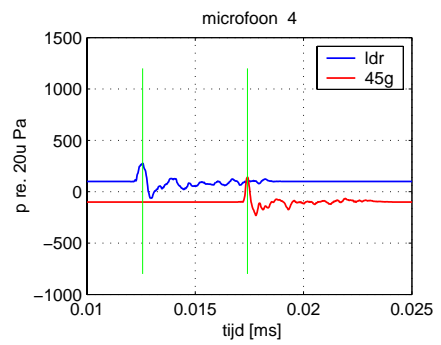
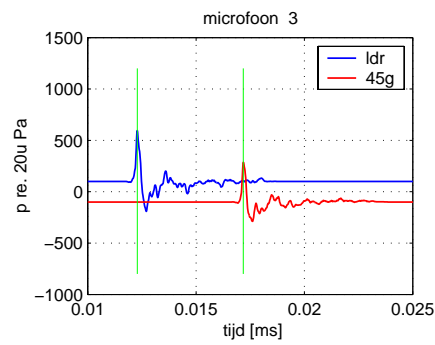
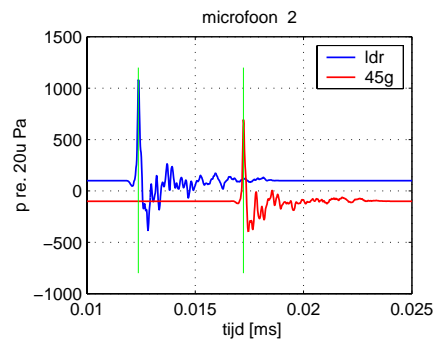
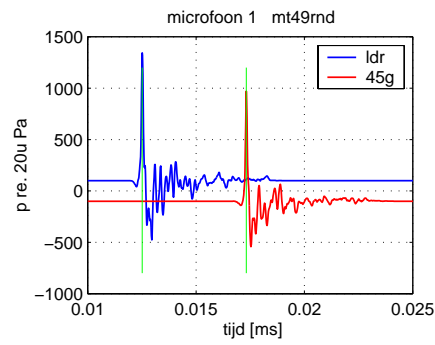


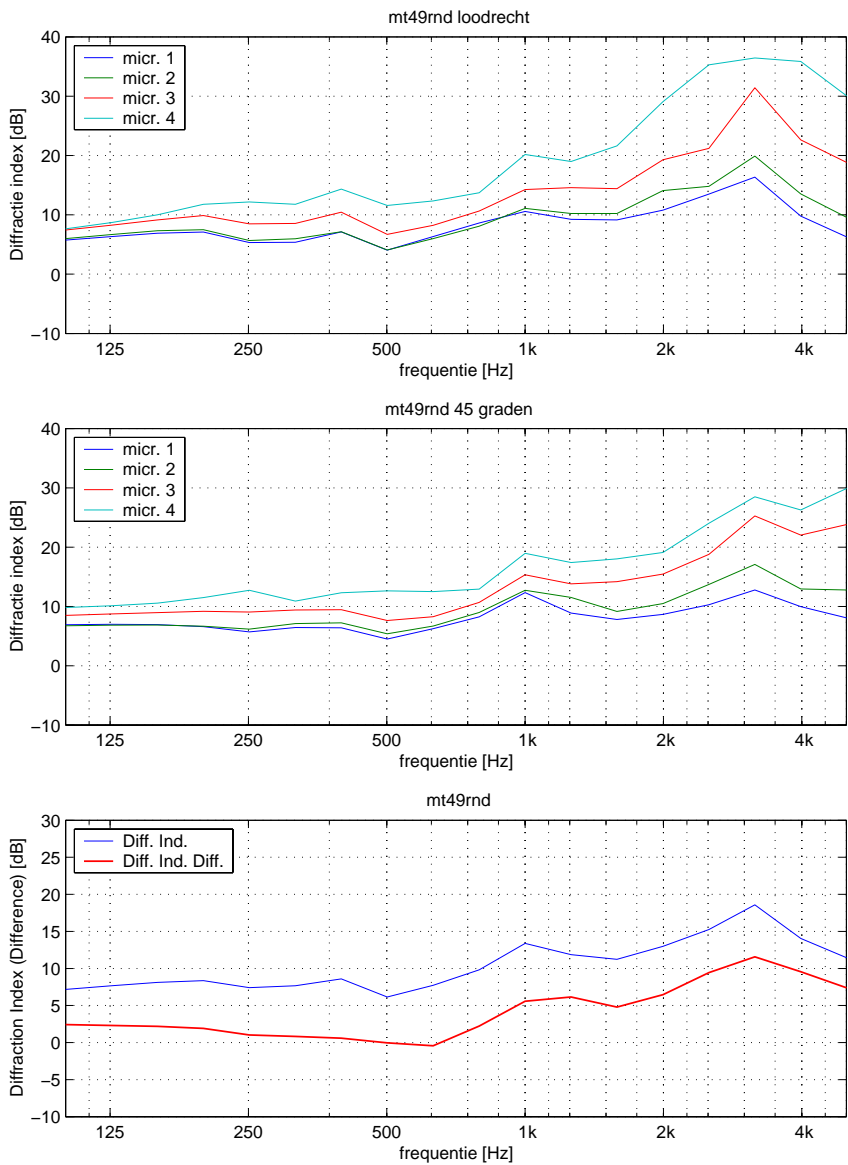
Technische beschrijving L-top Durisol vlak 70 mm (49)

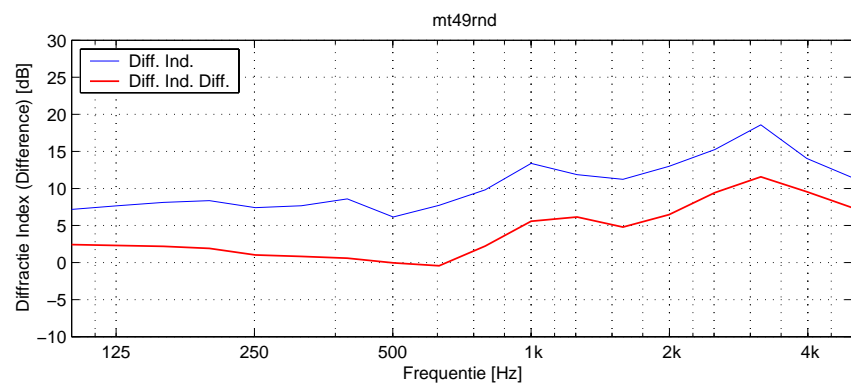
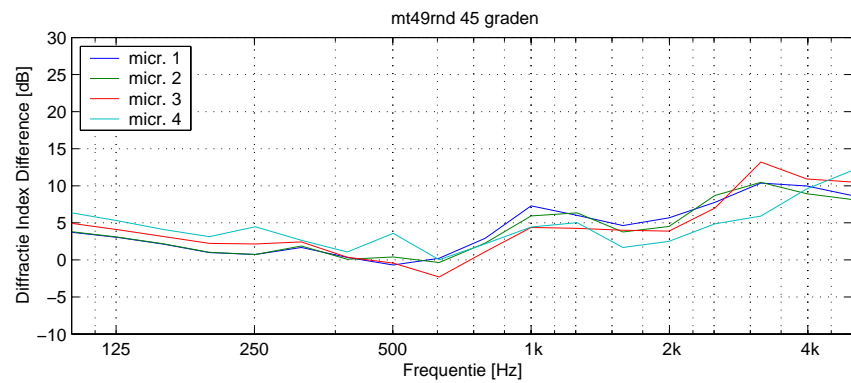
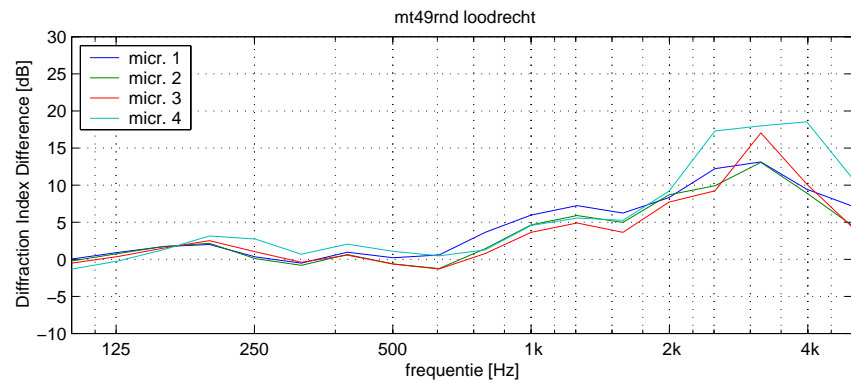
Leverancier: Durisol Raalte bv
Almelosestraat 83
Postbus 40
8100 AA Raalte
Tel.nr. 0572-346499

Het reflecterende basisscherm met het stalen frame op de top is voorzien van 2 meter brede platen van geperst houtvezel van 18 mm dik met daarop de vlakke Durisol houtvezelcementbeton platen van 70 mm dik.

De platen zijn op de top gelegd met behulp van een vorkheftruck.







mt49rnd

Berekende Diffraction Index [DI in dB] per microfoon en totaal

f(Hz)	mic.1	mic.2	mic.3	mic.4	mic.5	mic.6	mic.7	mic.8	DI
100	5.7	6.0	7.4	7.6	6.9	6.7	8.5	9.8	7.2
125	6.3	6.7	8.3	8.7	7.0	6.8	8.7	10.1	7.7
160	6.9	7.3	9.1	10.0	6.9	6.9	8.9	10.5	8.1
200	7.1	7.5	9.9	11.8	6.6	6.7	9.2	11.5	8.4
250	5.3	5.7	8.5	12.2	5.7	6.2	9.1	12.7	7.4
320	5.4	6.0	8.5	11.8	6.4	7.1	9.4	10.9	7.7
400	7.1	7.1	10.5	14.3	6.4	7.2	9.5	12.3	8.6
500	4.0	4.1	6.7	11.6	4.5	5.4	7.6	12.6	6.2
630	6.3	6.0	8.2	12.3	6.2	6.7	8.3	12.5	7.7
800	8.6	8.1	10.6	13.7	8.2	9.0	10.7	12.9	9.8
1000	10.6	11.1	14.3	20.2	12.3	12.7	15.3	19.0	13.4
1250	9.2	10.2	14.6	19.0	8.9	11.5	13.8	17.4	11.9
1600	9.1	10.2	14.4	21.6	7.8	9.2	14.2	18.0	11.2
2000	10.8	14.1	19.3	29.1	8.7	10.5	15.4	19.1	13.0
2500	13.5	14.8	21.2	35.3	10.3	13.7	18.8	24.0	15.2
3200	16.4	19.9	31.4	36.5	12.8	17.1	25.3	28.5	18.6
4000	9.8	13.5	22.6	35.9	10.0	12.9	22.0	26.3	14.0
5000	6.3	9.6	18.8	30.0	8.1	12.8	23.8	29.9	11.4

Berekende Diffraction Index Difference [DID in dB] per microfoon en totaal

f(Hz)	mic.1	mic.2	mic.3	mic.4	mic.5	mic.6	mic.7	mic.8	DID
100	0.0	-0.2	-0.5	-1.3	3.7	3.8	4.9	6.3	2.4
125	0.9	0.8	0.4	-0.2	3.0	3.1	4.1	5.3	2.3
160	1.7	1.7	1.5	1.3	2.1	2.2	3.2	4.1	2.2
200	2.0	2.2	2.5	3.2	1.0	1.0	2.2	3.1	1.9
250	0.3	0.1	1.0	2.7	0.7	0.7	2.1	4.5	1.0
320	-0.5	-0.8	-0.4	0.7	1.7	1.9	2.4	2.6	0.8
400	1.0	0.7	0.6	2.1	0.3	0.1	0.3	1.1	0.6
500	0.2	-0.6	-0.6	1.1	-0.7	0.4	-0.4	3.6	-0.0
630	0.6	-1.2	-1.3	0.5	0.2	-0.3	-2.3	0.0	-0.4
800	3.6	1.4	0.8	1.3	2.9	2.3	1.1	2.2	2.2
1000	6.0	4.6	3.6	4.6	7.3	5.9	4.4	4.4	5.6
1250	7.2	5.9	4.9	5.6	6.0	6.3	4.3	5.0	6.1
1600	6.2	5.0	3.6	5.3	4.6	3.8	4.0	1.7	4.8
2000	8.3	8.7	7.7	9.2	5.7	4.5	3.9	2.5	6.5
2500	12.2	9.9	9.2	17.3	7.8	8.7	7.0	4.9	9.4
3200	13.1	13.1	17.1	18.0	10.4	10.5	13.2	5.9	11.6
4000	9.4	8.9	10.1	18.5	10.0	8.9	10.9	9.6	9.5
5000	7.1	4.5	4.3	10.8	8.7	8.1	10.5	12.1	7.4

Single-number rating of Diffraction Index Difference [DL in dB] 3.1

Serie 50, L-top Durisol vlak 70 mm, met 180 mm houten plaat, absorberend basisscherm.

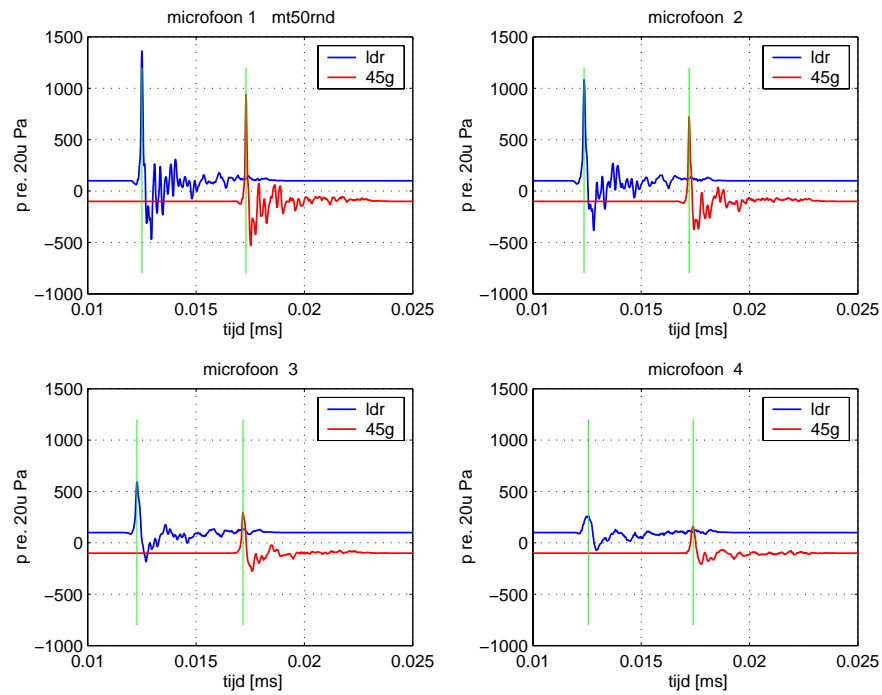


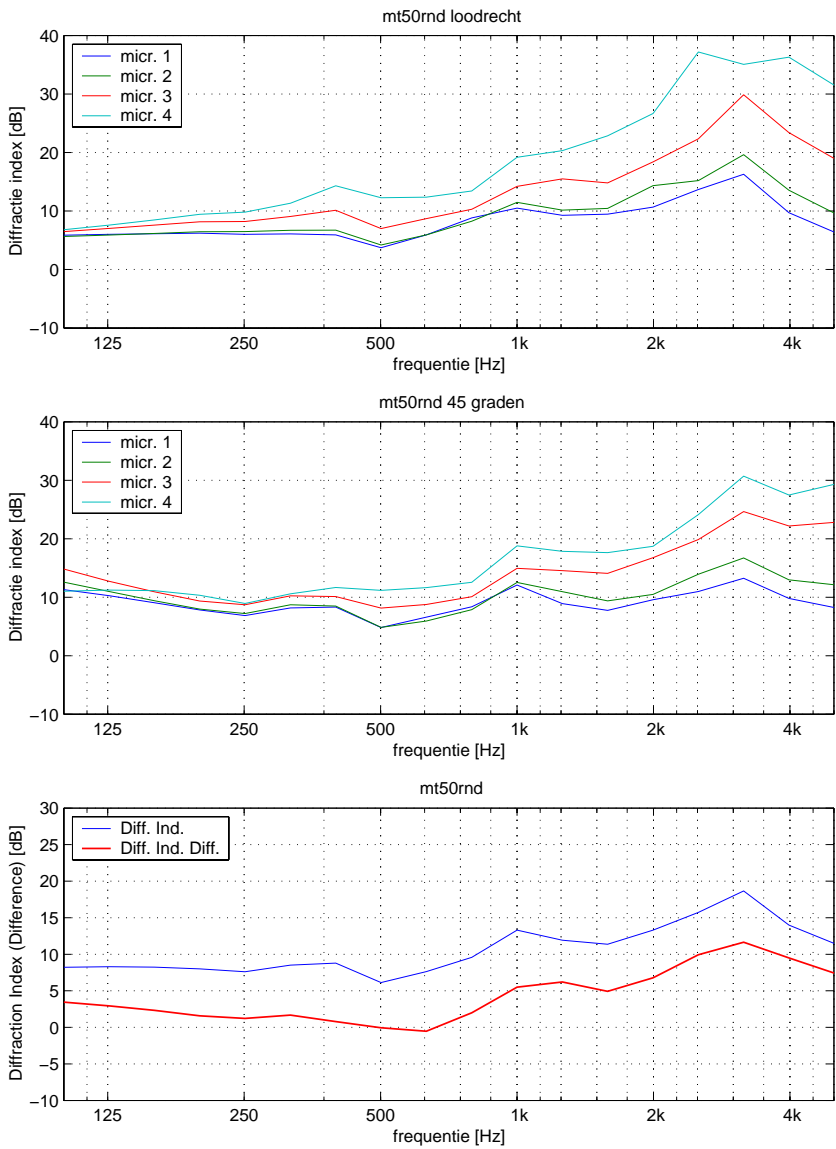
Technische beschrijving L-top Durisol vlak 70 mm (50)

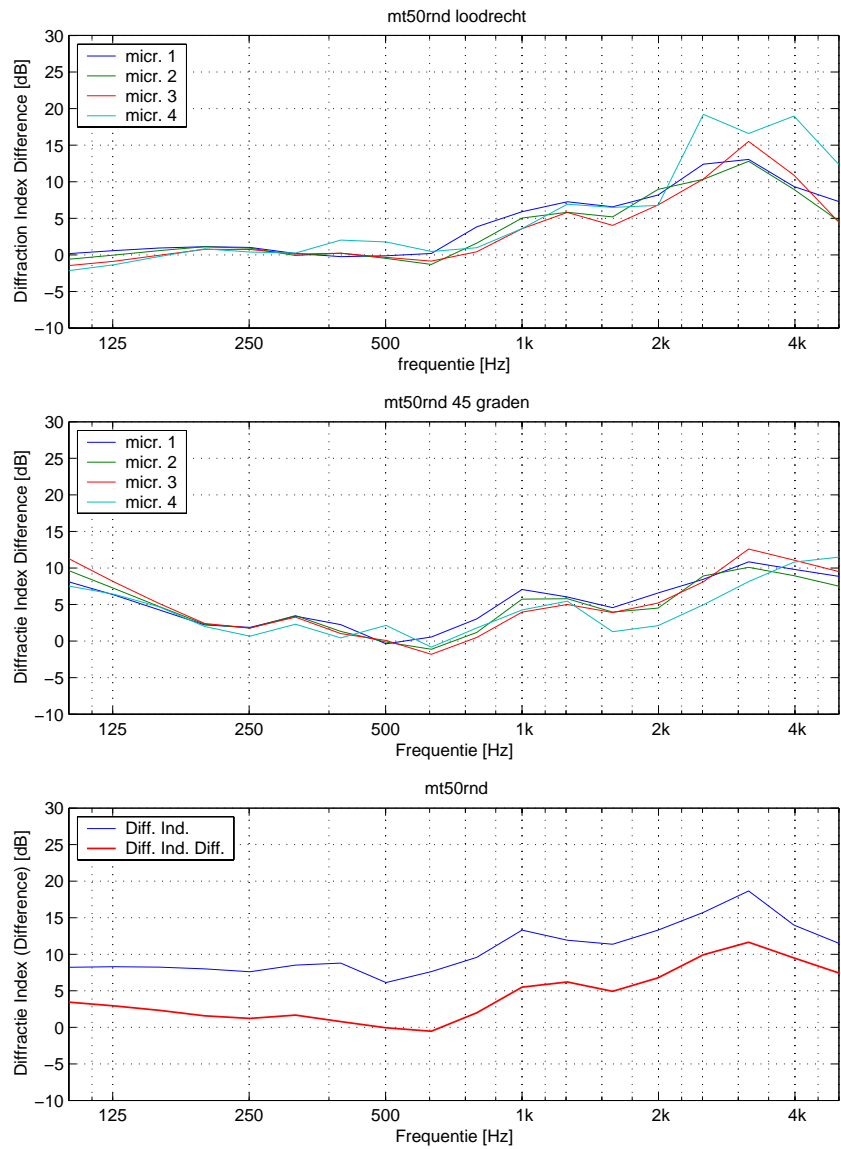
Leverancier: Durisol Raalte bv
Almelosestraat 83
Postbus 40
8100 AA Raalte
Tel.nr. 0572-346499

Het absorberende basisscherm met het stalen frame op de top is voorzien van 2 meter brede platen van geperst houtvezel van 18 mm dik met daarop de vlakke Durisol houtvezelcementbeton platen van 70 mm dik.

De platen zijn op de top gelegd met behulp van een vorkheftruck.







mt50rnd

Berekende Diffraction Index [DI in dB] per microfoon en totaal

f(Hz)	mic.1	mic.2	mic.3	mic.4	mic.5	mic.6	mic.7	mic.8	DI
100	5.9	5.6	6.5	6.8	11.3	12.6	14.8	11.0	8.2
125	6.0	5.9	7.0	7.6	10.3	11.0	12.7	11.2	8.3
160	6.1	6.2	7.6	8.5	9.1	9.4	10.9	11.1	8.2
200	6.2	6.5	8.2	9.4	7.8	8.0	9.3	10.3	8.0
250	6.0	6.5	8.2	9.8	6.9	7.2	8.7	8.9	7.6
320	6.1	6.7	9.1	11.3	8.2	8.7	10.2	10.6	8.5
400	5.9	6.7	10.1	14.3	8.3	8.5	10.1	11.7	8.8
500	3.7	4.2	7.0	12.3	4.8	4.8	8.1	11.2	6.1
630	5.9	5.9	8.7	12.4	6.6	5.9	8.8	11.6	7.6
800	8.8	8.3	10.3	13.4	8.4	7.9	10.1	12.6	9.6
1000	10.5	11.5	14.2	19.2	12.1	12.5	14.9	18.8	13.3
1250	9.3	10.2	15.5	20.3	8.9	11.0	14.5	17.8	11.9
1600	9.5	10.5	14.8	22.9	7.7	9.4	14.1	17.6	11.4
2000	10.7	14.3	18.4	26.7	9.6	10.5	16.8	18.7	13.3
2500	13.7	15.2	22.3	37.2	11.0	13.9	19.9	24.1	15.7
3200	16.3	19.6	29.9	35.1	13.2	16.7	24.6	30.7	18.7
4000	9.7	13.5	23.4	36.3	9.8	13.0	22.2	27.5	14.0
5000	6.4	9.6	19.0	31.5	8.2	12.1	22.8	29.3	11.5

Berekende Diffraction Index Difference [DID in dB] per microfoon en totaal

f(Hz)	mic.1	mic.2	mic.3	mic.4	mic.5	mic.6	mic.7	mic.8	DID
100	0.2	-0.6	-1.5	-2.2	8.1	9.6	11.3	7.5	3.5
125	0.6	-0.0	-0.9	-1.3	6.3	7.2	8.1	6.4	2.9
160	0.9	0.6	-0.1	-0.2	4.3	4.7	5.1	4.7	2.3
200	1.1	1.1	0.8	0.8	2.2	2.3	2.4	2.0	1.6
250	1.0	0.9	0.7	0.4	1.9	1.8	1.8	0.7	1.2
320	0.2	-0.1	0.1	0.3	3.4	3.5	3.3	2.3	1.7
400	-0.2	0.2	0.2	2.0	2.2	1.3	1.0	0.4	0.8
500	-0.1	-0.5	-0.3	1.8	-0.4	-0.1	0.1	2.1	-0.1
630	0.2	-1.3	-0.9	0.5	0.6	-1.1	-1.8	-0.8	-0.5
800	3.8	1.6	0.4	1.0	3.0	1.2	0.5	1.8	2.0
1000	5.9	5.0	3.6	3.6	7.1	5.7	4.0	4.3	5.5
1250	7.3	5.8	5.8	6.9	6.0	5.8	5.0	5.5	6.2
1600	6.6	5.2	4.0	6.5	4.6	4.0	3.9	1.3	4.9
2000	8.2	9.0	6.8	6.8	6.6	4.5	5.2	2.1	6.8
2500	12.4	10.3	10.4	19.2	8.4	8.9	8.1	5.0	9.9
3200	13.0	12.8	15.5	16.6	10.8	10.1	12.6	8.1	11.7
4000	9.4	9.0	10.9	19.0	9.8	8.9	11.1	10.8	9.5
5000	7.3	4.6	4.4	12.3	8.8	7.5	9.5	11.5	7.4

Single-number rating of Diffraction Index Difference [DL in dB] 3.2

Serie 51, L-top met Durisol profiel, met 180 mm houten plaat, absorberend basisscherm.

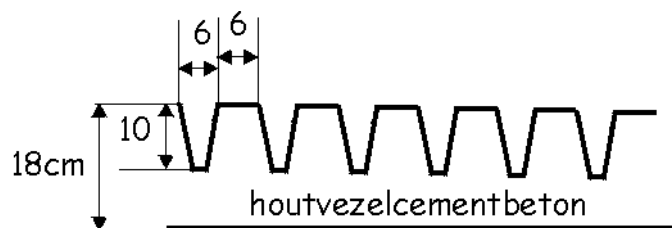


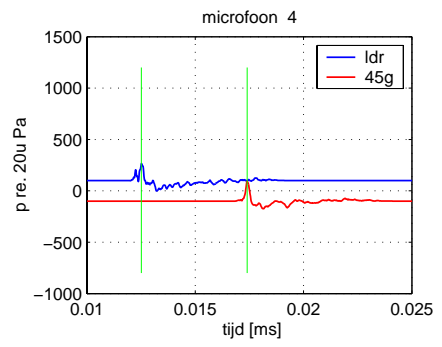
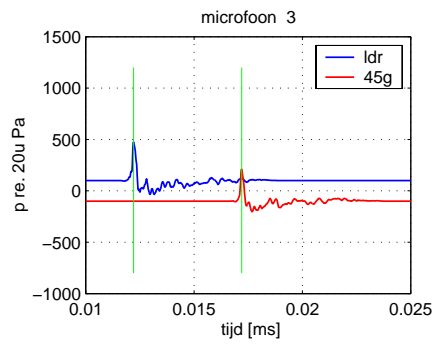
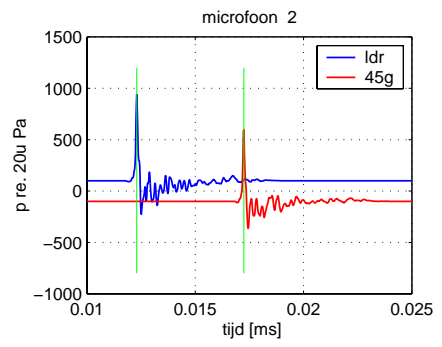
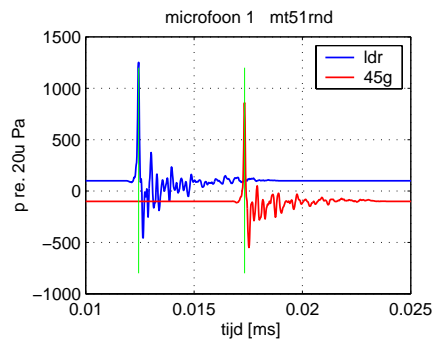
Technische beschrijving L-top Durisol profiel 180-100 mm (51)

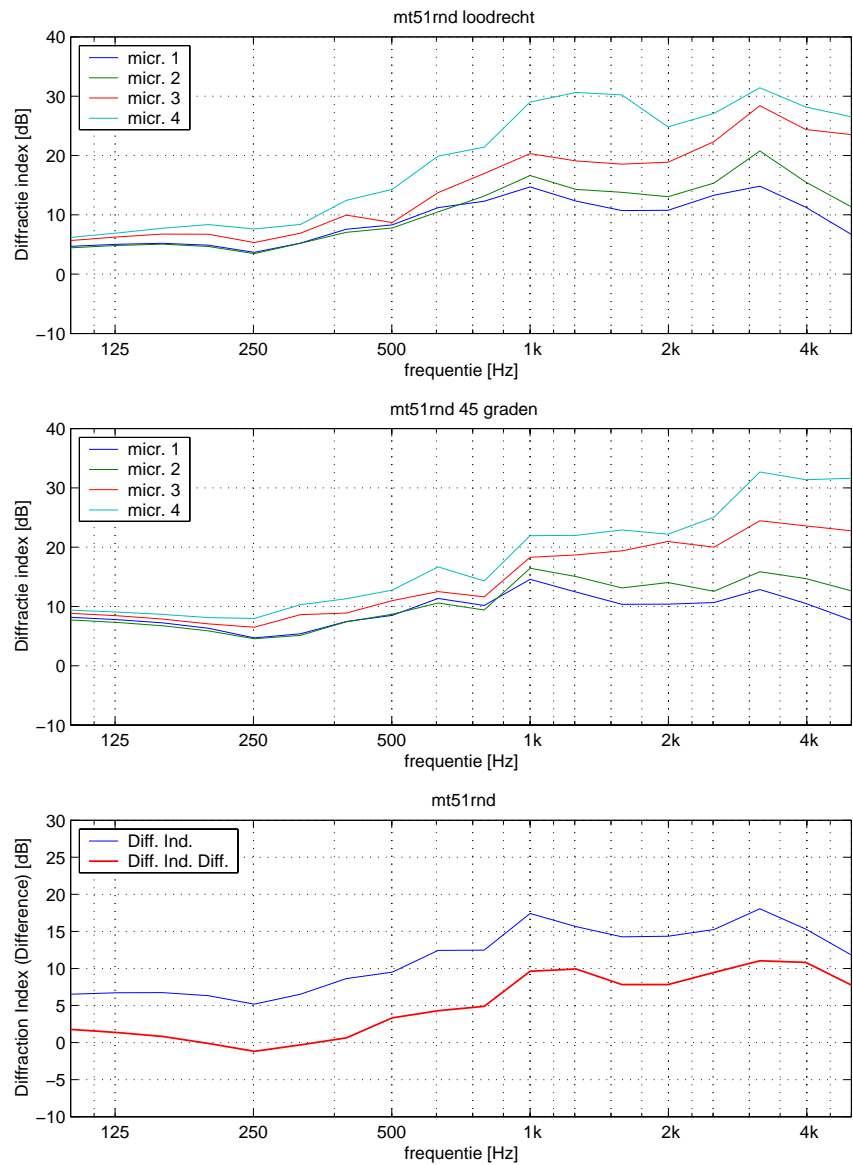
Leverancier: Durisol Raalte bv
Almelosestraat 83
Postbus 40
8100 AA Raalte
Tel.nr. 0572-346499

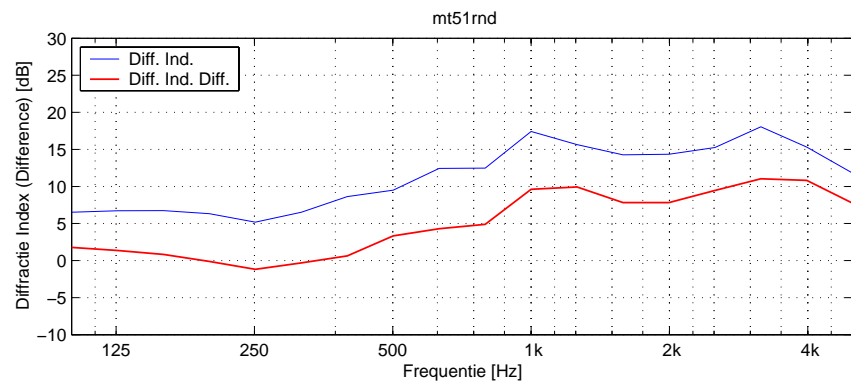
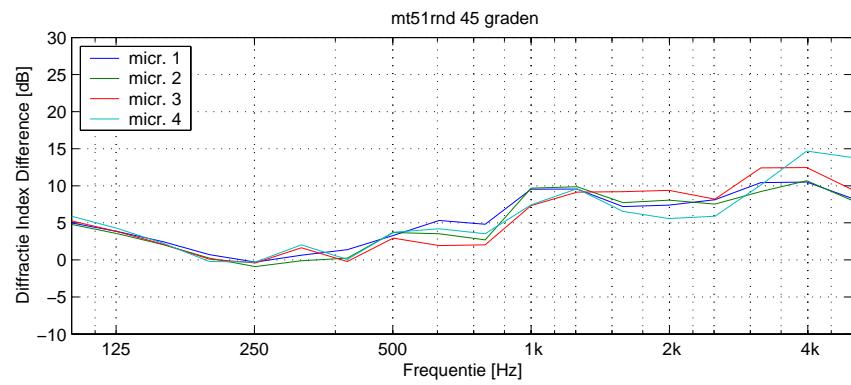
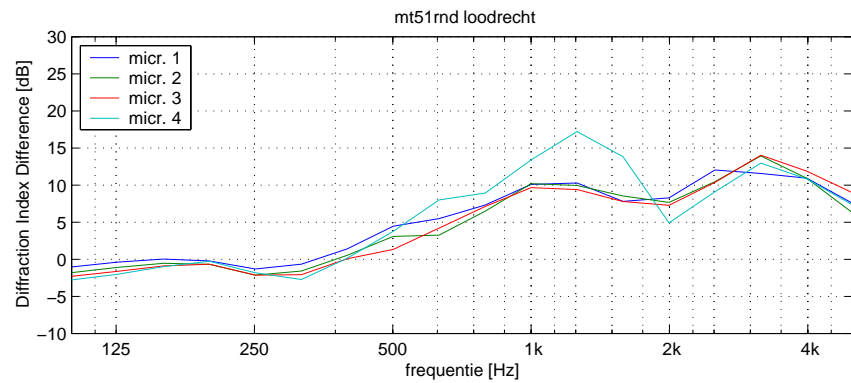
Het absorberende basisscherm met het stalen frame op de top is voorzien van 2 meter brede platen van geperst houtvezel van 18 mm dik met daarop de Durisol profiel platen van houtvezelcementbeton. Het figuur hieronder geeft een grafisch overzicht van het profiel van de platen.

De platen zijn op de top gelegd met behulp van een vorkheftruck.









mt51rnd

Berekende Diffraction Index [DI in dB] per microfoon en totaal

f(Hz)	mic.1	mic.2	mic.3	mic.4	mic.5	mic.6	mic.7	mic.8	DI
100	4.7	4.4	5.7	6.2	8.2	7.7	8.8	9.4	6.5
125	5.0	4.8	6.3	6.9	7.8	7.3	8.4	9.1	6.7
160	5.2	5.0	6.7	7.7	7.2	6.7	7.9	8.7	6.7
200	4.9	4.7	6.7	8.4	6.3	5.9	7.0	8.1	6.3
250	3.7	3.4	5.3	7.6	4.7	4.5	6.5	8.0	5.2
320	5.2	5.2	6.9	8.4	5.4	5.1	8.6	10.3	6.5
400	7.6	7.0	10.0	12.4	7.4	7.4	8.9	11.3	8.6
500	8.3	7.8	8.7	14.3	8.5	8.7	11.0	12.8	9.5
630	11.2	10.5	13.8	19.9	11.3	10.6	12.5	16.7	12.4
800	12.3	13.1	17.0	21.4	10.2	9.4	11.6	14.3	12.5
1000	14.7	16.6	20.3	29.0	14.6	16.5	18.3	21.9	17.4
1250	12.3	14.3	19.1	30.6	12.4	15.0	18.7	22.0	15.7
1600	10.7	13.8	18.6	30.2	10.4	13.1	19.4	22.9	14.3
2000	10.8	13.1	18.9	24.8	10.4	14.0	20.9	22.2	14.3
2500	13.3	15.4	22.3	27.1	10.7	12.5	20.0	25.0	15.3
3200	14.8	20.8	28.4	31.4	12.8	15.8	24.5	32.7	18.0
4000	11.3	15.5	24.4	28.2	10.5	14.7	23.6	31.4	15.3
5000	6.6	11.3	23.5	26.5	7.7	12.6	22.7	31.6	11.8

Berekende Diffraction Index Difference [DID in dB] per microfoon en totaal

f(Hz)	mic.1	mic.2	mic.3	mic.4	mic.5	mic.6	mic.7	mic.8	DID
100	-1.0	-1.8	-2.3	-2.8	5.0	4.8	5.3	5.9	1.8
125	-0.4	-1.1	-1.6	-2.0	3.8	3.5	3.8	4.2	1.4
160	0.0	-0.5	-0.9	-1.0	2.4	2.0	2.1	2.2	0.8
200	-0.2	-0.7	-0.7	-0.3	0.7	0.2	0.1	-0.2	-0.1
250	-1.3	-2.1	-2.1	-1.8	-0.3	-0.9	-0.4	-0.3	-1.2
320	-0.7	-1.6	-2.1	-2.7	0.6	-0.1	1.6	2.0	-0.3
400	1.4	0.6	0.1	0.2	1.4	0.2	-0.2	0.1	0.6
500	4.5	3.1	1.3	3.8	3.3	3.7	2.9	3.7	3.3
630	5.5	3.3	4.2	8.0	5.3	3.5	1.9	4.2	4.3
800	7.3	6.5	7.1	8.9	4.8	2.7	2.0	3.5	4.9
1000	10.1	10.2	9.7	13.4	9.5	9.7	7.3	7.4	9.6
1250	10.3	10.0	9.4	17.2	9.6	9.9	9.1	9.6	9.9
1600	7.8	8.5	7.8	13.8	7.2	7.7	9.2	6.6	7.8
2000	8.3	7.7	7.3	4.9	7.4	8.1	9.4	5.6	7.8
2500	12.0	10.5	10.4	9.1	8.1	7.5	8.2	5.9	9.5
3200	11.6	13.9	14.0	13.0	10.4	9.2	12.4	10.1	11.0
4000	10.9	10.9	11.9	10.9	10.5	10.7	12.5	14.7	10.8
5000	7.5	6.2	9.0	7.3	8.3	8.0	9.4	13.8	7.7

Single-number rating of Diffraction Index Difference [DL in dB] 4.7

Serie 52, L-top Durisol profiel 180-100 mm, zonder 180 mm houten plaat, reflecterend basisscherm.

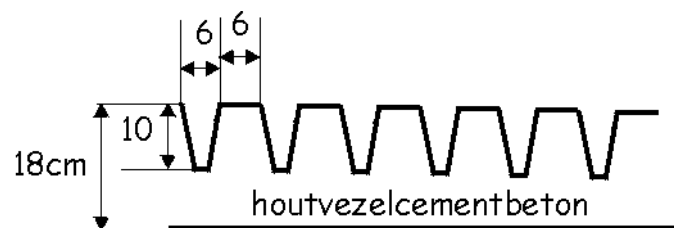


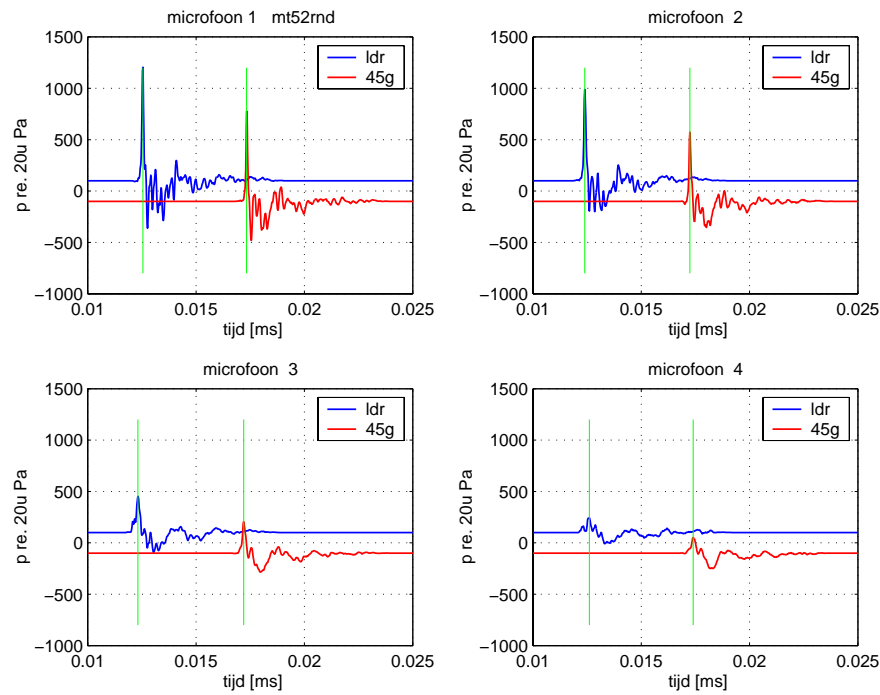
Technische beschrijving L-top Durisol profiel 180-100 mm (52)

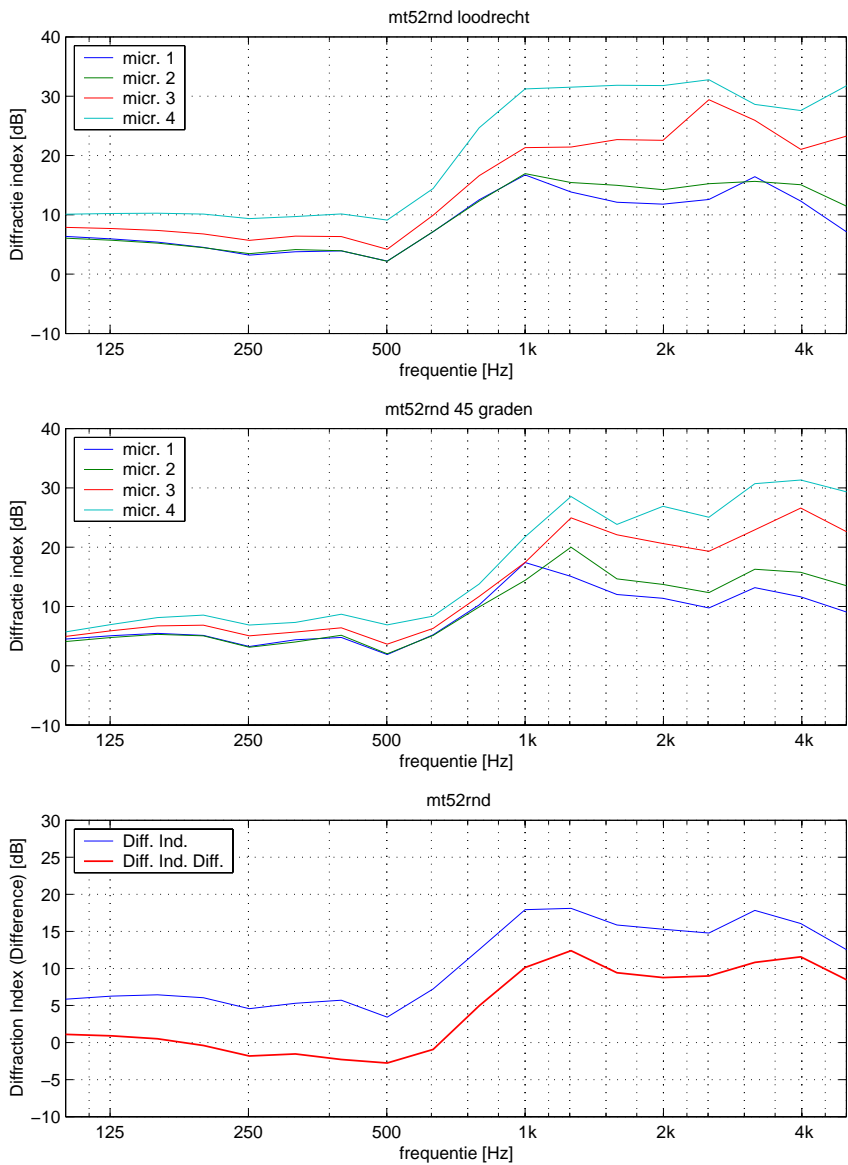
Leverancier: Durisol Raalte bv
Almelosestraat 83
Postbus 40
8100 AA Raalte
Tel.nr. 0572-346499

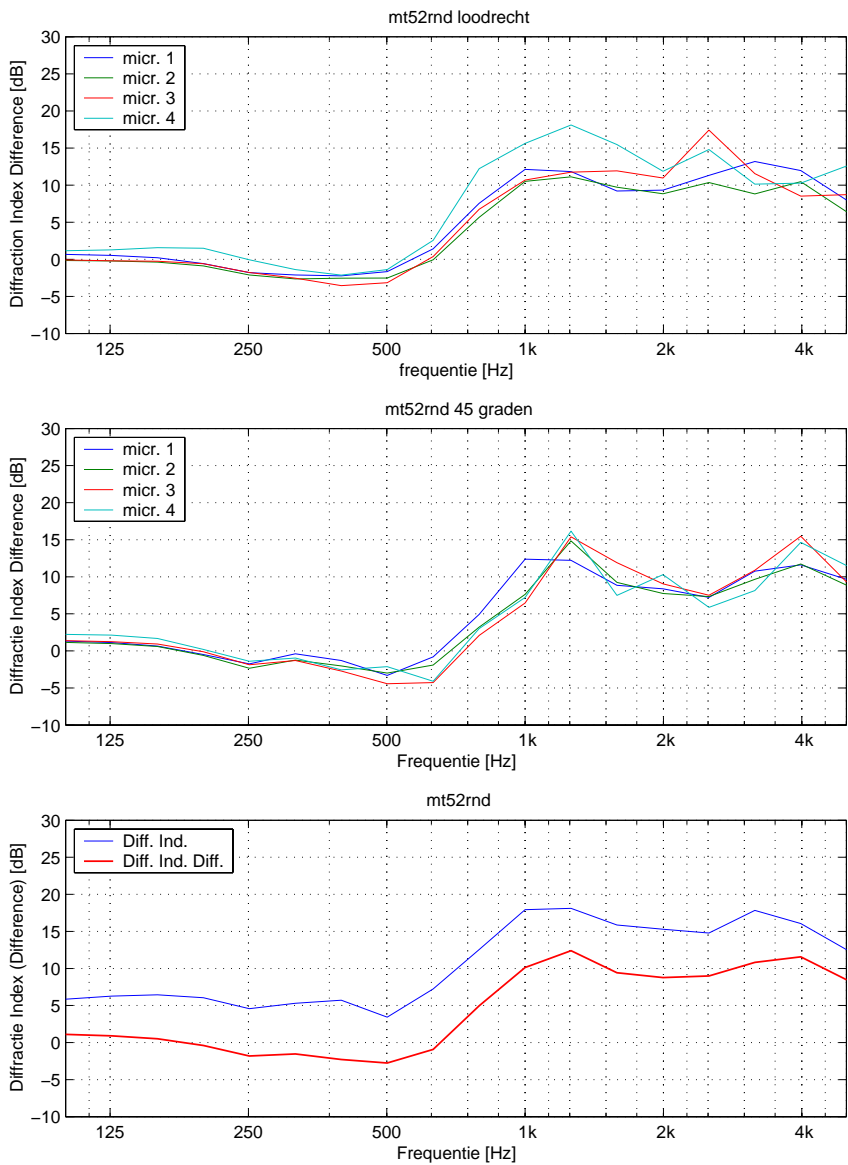
Het reflecterende basisscherm met het stalen frame op de top met daarop de Durisol profiel platen van houtvezelcementbeton. Het figuur hieronder geeft een grafisch overzicht van het profiel van de platen.

De platen zijn op de top gelegd met behulp van een vorkheftruck.









mt52rnd

Berekende Diffraction Index [DI in dB] per microfoon en totaal

f(Hz)	mic.1	mic.2	mic.3	mic.4	mic.5	mic.6	mic.7	mic.8	DI
100	6.4	6.1	7.9	10.1	4.5	4.1	4.9	5.7	5.9
125	6.0	5.7	7.7	10.2	5.1	4.8	5.9	7.0	6.3
160	5.4	5.2	7.4	10.3	5.5	5.3	6.7	8.1	6.4
200	4.5	4.5	6.8	10.1	5.1	5.0	6.8	8.5	6.0
250	3.2	3.5	5.7	9.4	3.2	3.1	5.0	6.9	4.6
320	3.8	4.1	6.4	9.7	4.4	4.0	5.7	7.3	5.3
400	3.9	4.0	6.3	10.2	4.8	5.1	6.4	8.7	5.7
500	2.2	2.2	4.2	9.1	1.9	2.0	3.6	6.9	3.4
630	7.1	7.2	9.9	14.4	5.2	5.1	6.3	8.4	7.2
800	12.5	12.3	16.6	24.7	10.3	9.9	11.7	13.8	12.5
1000	16.7	16.9	21.3	31.2	17.4	14.4	17.4	21.7	17.9
1250	13.8	15.4	21.4	31.5	15.1	20.0	24.9	28.5	18.1
1600	12.1	15.0	22.7	31.8	12.0	14.6	22.1	23.8	15.9
2000	11.8	14.2	22.5	31.8	11.4	13.7	20.6	26.9	15.3
2500	12.6	15.2	29.4	32.8	9.7	12.3	19.3	25.0	14.8
3200	16.4	15.6	25.9	28.6	13.2	16.3	22.9	30.7	17.8
4000	12.3	15.1	21.0	27.6	11.6	15.7	26.6	31.3	16.1
5000	7.1	11.4	23.3	31.8	9.0	13.5	22.6	29.3	12.5

Berekende Diffraction Index Difference [DID in dB] per microfoon en totaal

f(Hz)	mic.1	mic.2	mic.3	mic.4	mic.5	mic.6	mic.7	mic.8	DID
100	0.7	-0.2	-0.1	1.2	1.3	1.1	1.4	2.2	1.1
125	0.5	-0.2	-0.2	1.3	1.1	1.0	1.3	2.1	0.9
160	0.2	-0.4	-0.3	1.6	0.7	0.6	0.9	1.7	0.5
200	-0.6	-0.9	-0.6	1.5	-0.5	-0.6	-0.1	0.2	-0.4
250	-1.8	-2.1	-1.8	-0.1	-1.8	-2.3	-1.9	-1.4	-1.8
320	-2.1	-2.6	-2.6	-1.4	-0.4	-1.2	-1.3	-1.0	-1.5
400	-2.2	-2.5	-3.5	-2.1	-1.3	-2.0	-2.7	-2.6	-2.3
500	-1.6	-2.5	-3.2	-1.4	-3.3	-3.0	-4.4	-2.1	-2.8
630	1.4	-0.1	0.4	2.5	-0.8	-1.9	-4.3	-4.1	-0.9
800	7.6	5.7	6.8	12.2	4.9	3.2	2.1	3.0	5.0
1000	12.1	10.5	10.7	15.6	12.4	7.6	6.5	7.2	10.1
1250	11.8	11.1	11.7	18.1	12.2	14.8	15.4	16.2	12.4
1600	9.2	9.7	11.9	15.5	8.8	9.2	11.9	7.5	9.4
2000	9.3	8.8	11.0	11.9	8.4	7.7	9.0	10.3	8.8
2500	11.3	10.4	17.4	14.8	7.2	7.3	7.5	5.9	9.0
3200	13.2	8.8	11.6	10.1	10.8	9.6	10.9	8.1	10.8
4000	12.0	10.5	8.5	10.3	11.6	11.7	15.5	14.6	11.6
5000	8.0	6.4	8.7	12.6	9.7	8.9	9.3	11.5	8.5

Single-number rating of Diffraction Index Difference [DL in dB] 2.7

Serie 53, L-top met Durisol profiel, met 180 mm houten plaat, reflecterend basisscherm.

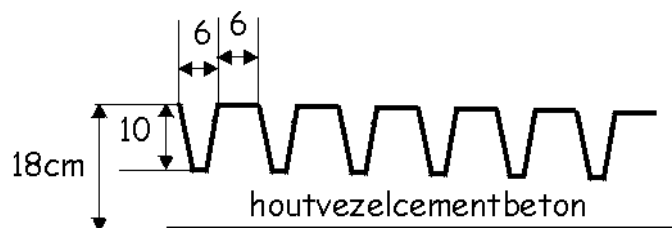


Technische beschrijving L-top Durisol profiel 180-100 mm (53)

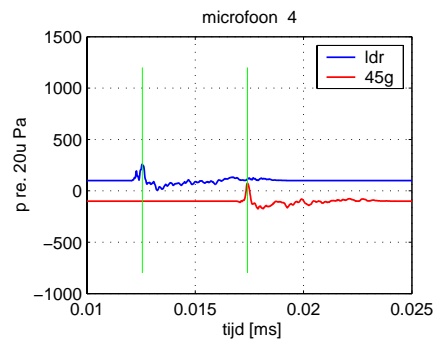
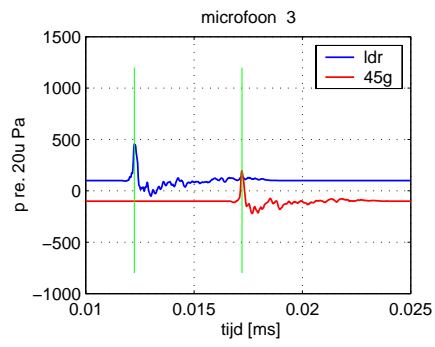
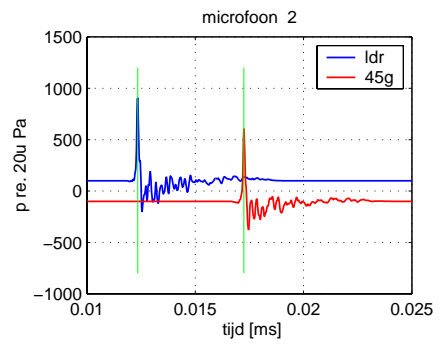
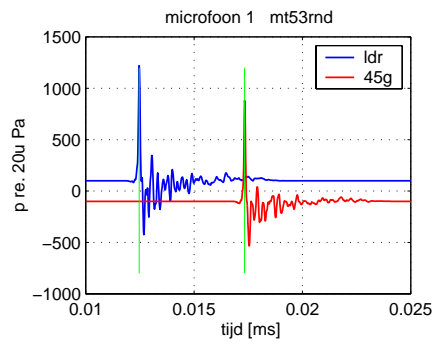
Leverancier: Durisol Raalte bv
Almelosestraat 83
Postbus 40
8100 AA Raalte
Tel.nr. 0572-346499

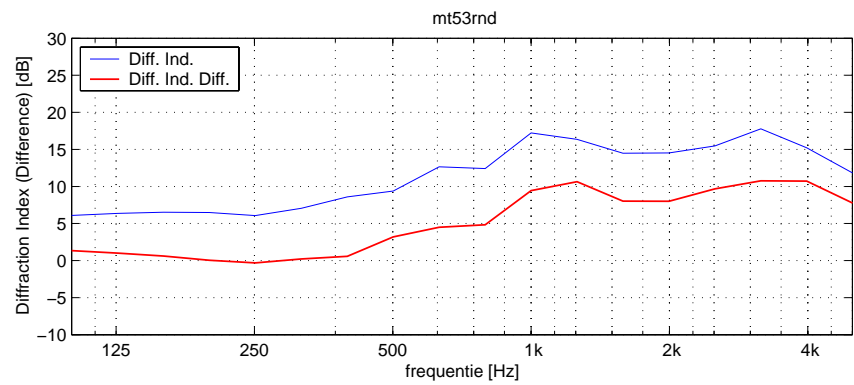
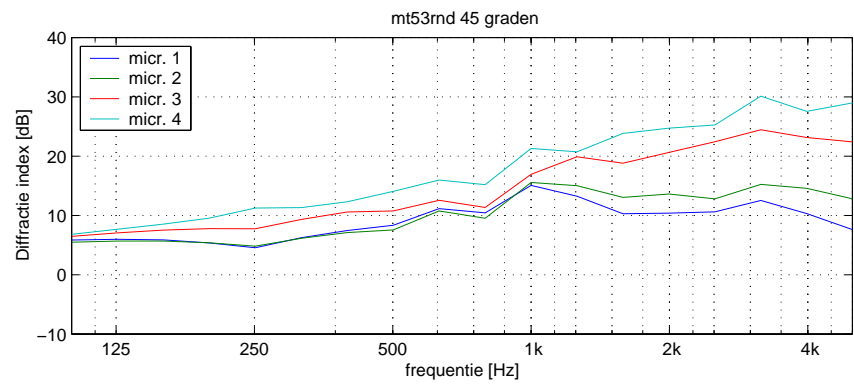
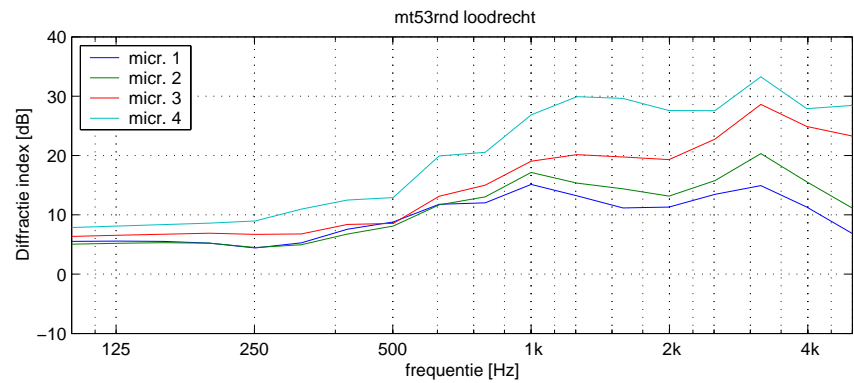
Het reflecterende basisscherm met het stalen frame op de top is voorzien van 2 meter brede platen van geperst houtvezel van 18 mm dik met daarop de Durisol profiel platen van houtvezelcementbeton. Het figuur hieronder geeft een grafisch overzicht van het profiel van de platen.

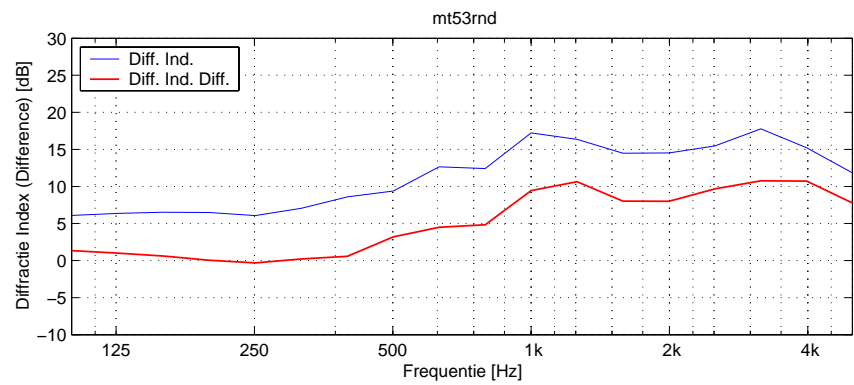
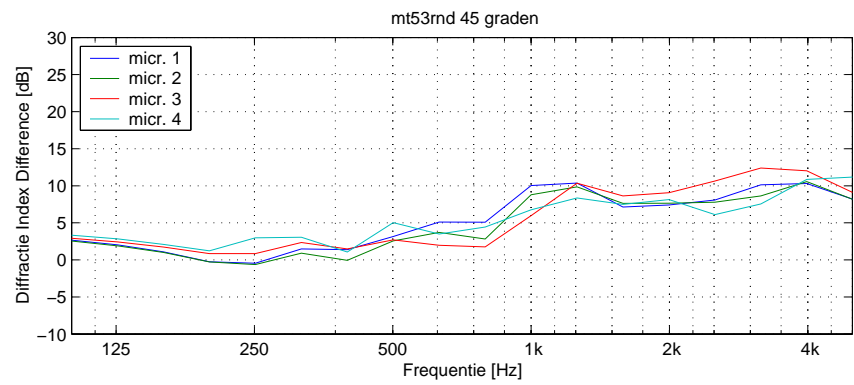
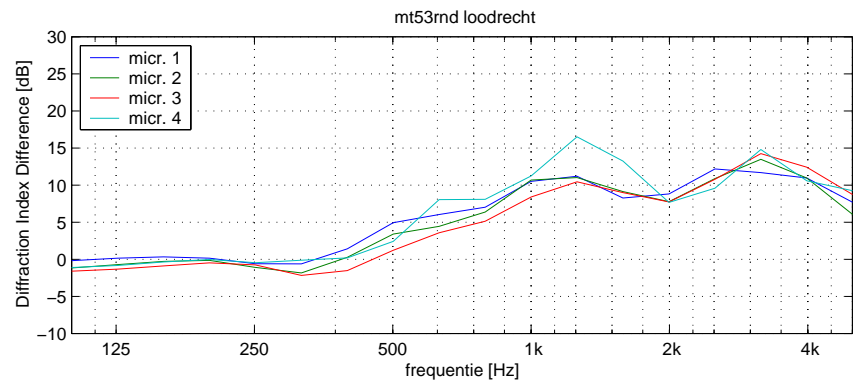
De platen zijn op de top gelegd met behulp van een vorkheftruck.











mt53rnd

Berekende Diffraction Index [DI in dB] per microfoon en totaal

f(Hz)	mic.1	mic.2	mic.3	mic.4	mic.5	mic.6	mic.7	mic.8	DI
100	5.5	5.0	6.4	7.9	5.9	5.5	6.5	6.8	6.1
125	5.6	5.2	6.6	8.1	6.0	5.7	7.1	7.7	6.4
160	5.5	5.3	6.7	8.4	5.9	5.7	7.5	8.5	6.5
200	5.2	5.2	6.9	8.6	5.4	5.4	7.8	9.6	6.5
250	4.4	4.5	6.7	9.0	4.5	4.8	7.8	11.2	6.1
320	5.3	5.0	6.8	11.0	6.2	6.1	9.3	11.3	7.1
400	7.6	6.8	8.4	12.5	7.5	7.1	10.6	12.3	8.6
500	8.8	8.1	8.6	12.9	8.3	7.6	10.8	14.0	9.4
630	11.8	11.7	13.1	19.9	11.1	10.7	12.5	16.0	12.6
800	12.0	13.0	15.0	20.5	10.4	9.5	11.3	15.2	12.4
1000	15.1	17.1	19.0	26.8	15.1	15.6	16.9	21.3	17.2
1250	13.2	15.4	20.1	29.9	13.2	15.0	19.9	20.7	16.3
1600	11.2	14.4	19.8	29.6	10.3	13.0	18.8	23.8	14.5
2000	11.3	13.2	19.3	27.6	10.4	13.6	20.6	24.7	14.5
2500	13.5	15.8	22.8	27.6	10.6	12.8	22.4	25.3	15.5
3200	14.9	20.3	28.6	33.3	12.5	15.2	24.4	30.1	17.8
4000	11.3	15.6	24.9	27.9	10.3	14.6	23.1	27.5	15.2
5000	6.8	11.1	23.3	28.4	7.6	12.8	22.4	29.0	11.8

Berekende Diffraction Index Difference [DID in dB] per microfoon en totaal

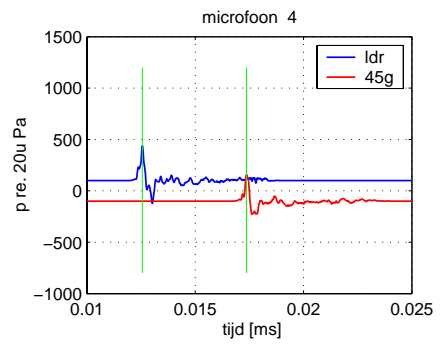
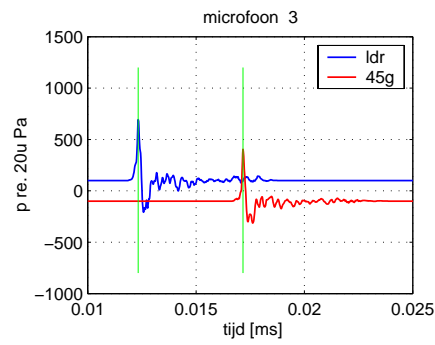
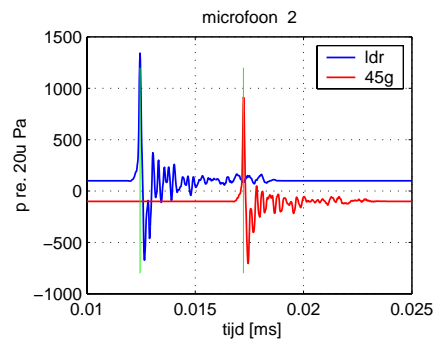
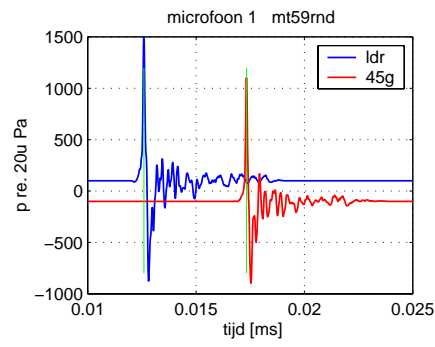
f(Hz)	mic.1	mic.2	mic.3	mic.4	mic.5	mic.6	mic.7	mic.8	DID
100	-0.2	-1.2	-1.6	-1.1	2.7	2.5	2.9	3.3	1.3
125	0.2	-0.7	-1.3	-0.8	2.0	1.9	2.4	2.8	1.0
160	0.3	-0.3	-0.9	-0.4	1.1	1.0	1.7	2.1	0.6
200	0.1	-0.1	-0.5	-0.0	-0.3	-0.3	0.8	1.2	0.0
250	-0.6	-1.1	-0.8	-0.5	-0.5	-0.6	0.8	3.0	-0.3
320	-0.6	-1.8	-2.2	-0.1	1.5	0.9	2.4	3.1	0.2
400	1.4	0.3	-1.5	0.2	1.4	-0.1	1.5	1.1	0.6
500	4.9	3.4	1.2	2.4	3.2	2.6	2.7	5.0	3.2
630	6.0	4.4	3.6	8.1	5.1	3.7	2.0	3.5	4.5
800	7.0	6.4	5.1	8.1	5.1	2.8	1.8	4.4	4.8
1000	10.5	10.7	8.4	11.2	10.0	8.8	6.0	6.8	9.4
1250	11.2	11.0	10.5	16.5	10.4	9.9	10.3	8.3	10.6
1600	8.3	9.1	9.0	13.3	7.1	7.6	8.6	7.5	8.0
2000	8.8	7.8	7.7	7.7	7.4	7.6	9.1	8.1	8.0
2500	12.2	10.9	10.8	9.6	8.1	7.8	10.6	6.1	9.7
3200	11.7	13.5	14.3	14.8	10.1	8.6	12.4	7.6	10.8
4000	11.0	11.0	12.4	10.6	10.3	10.6	12.0	10.9	10.7
5000	7.7	6.0	8.7	9.3	8.2	8.2	9.1	11.2	7.8

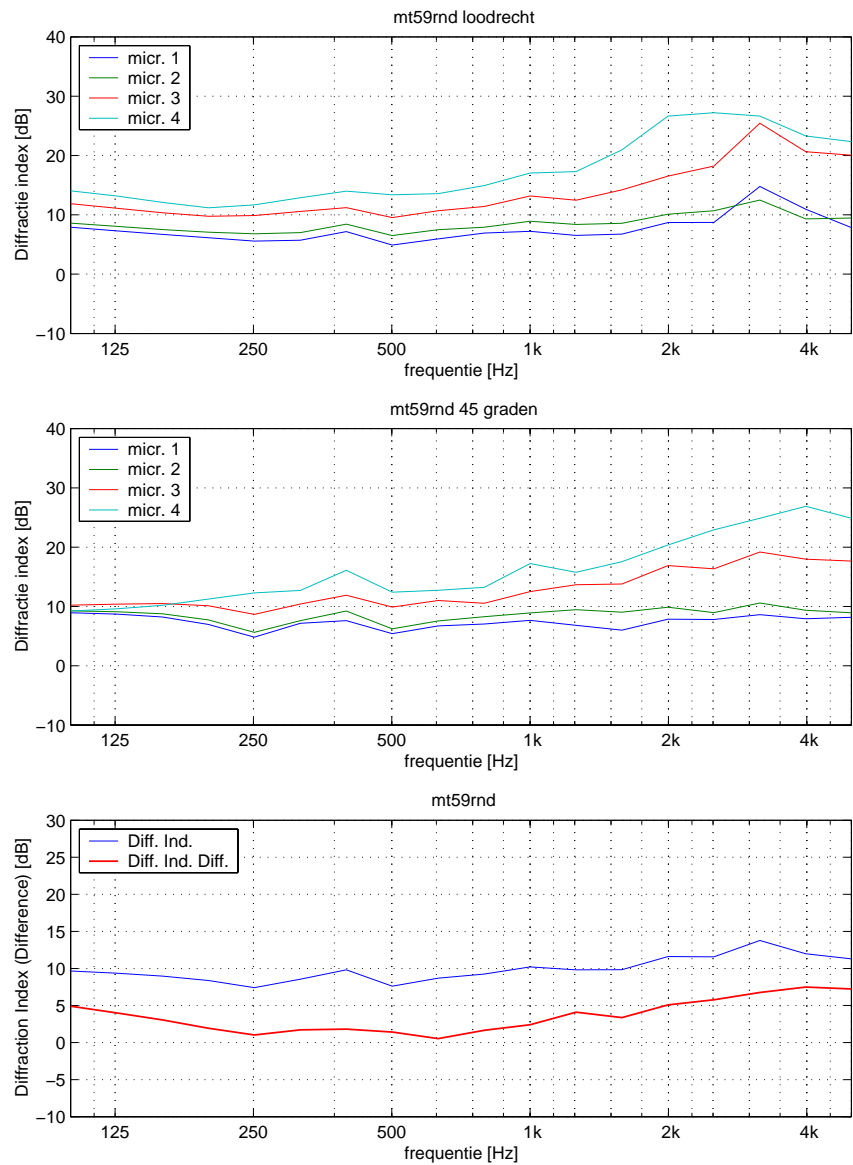
Single-number rating of Diffraction Index Difference [DL in dB] 4.8

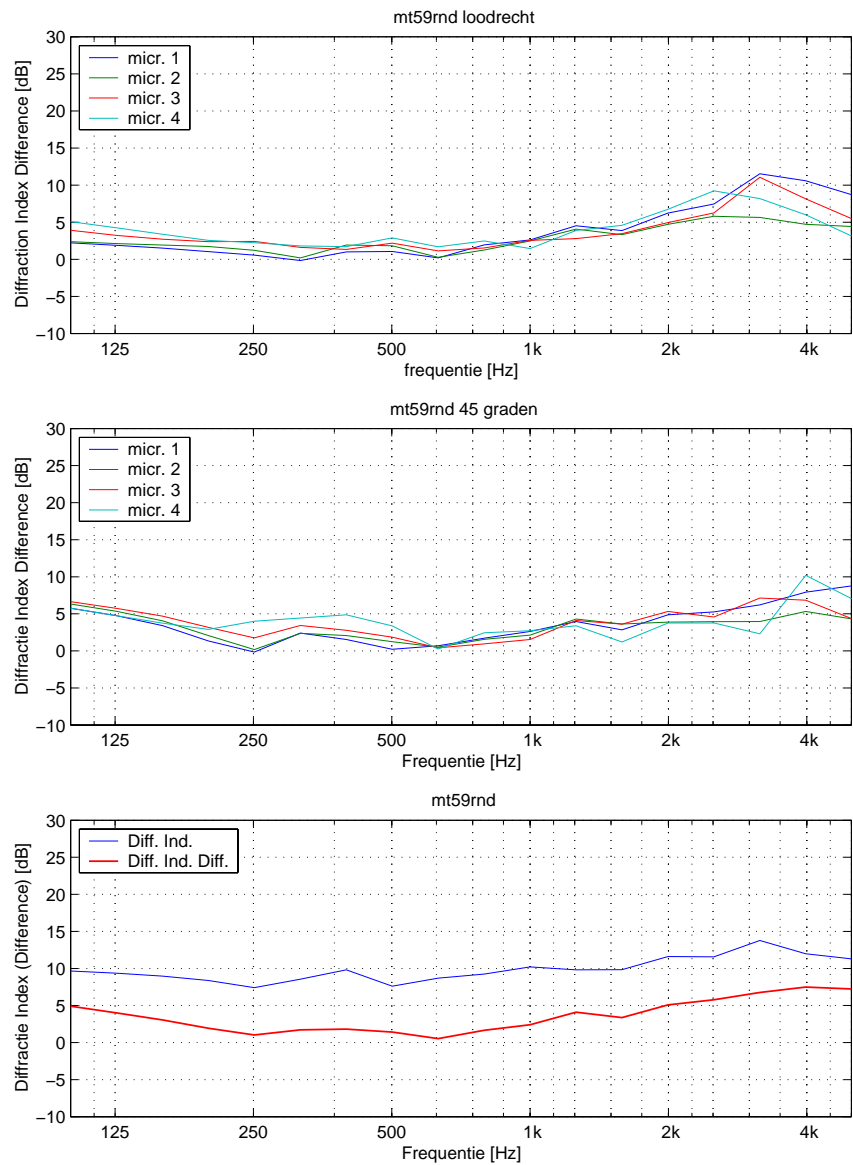
Serie 59, L-top met 18 mm spaanplaat, reflecterend basisscherf*Technische beschrijving reflecterend basisscherf met L-top (59)*

Leverancier: Holland Scherm bv
Giessenweg 4-6
3044 AL Rotterdam
Tel.nr. 010-2083329

Bij deze L-top is het reflecterende basisscherf met voorzetwand gebruikt met op de top een stalen frame gemonteerd dat aan beide kanten 1 meter uitsteekt. Op dat stalen frame zijn op 1 kant platen van 2 meter breed geperst houtvezel van 18 mm dik gelegd zodat een L-top ontstaat.







mt59rnd

Berekende Diffraction Index [DI in dB] per microfoon en totaal

f(Hz)	mic.1	mic.2	mic.3	mic.4	mic.5	mic.6	mic.7	mic.8	DI
100	7.9	8.6	11.9	14.0	8.9	9.3	10.2	9.2	9.7
125	7.3	8.0	11.1	13.2	8.7	9.1	10.4	9.6	9.4
160	6.7	7.5	10.4	12.1	8.2	8.8	10.5	10.2	9.0
200	6.1	7.1	9.8	11.2	7.0	7.7	10.1	11.2	8.4
250	5.6	6.8	9.9	11.7	4.8	5.6	8.7	12.3	7.4
320	5.7	7.0	10.6	12.9	7.2	7.6	10.4	12.7	8.5
400	7.2	8.4	11.2	14.0	7.6	9.2	11.9	16.1	9.8
500	4.9	6.5	9.5	13.4	5.4	6.2	9.9	12.4	7.6
630	5.9	7.5	10.7	13.6	6.7	7.5	11.0	12.7	8.7
800	6.9	7.9	11.4	14.9	7.0	8.3	10.5	13.2	9.2
1000	7.2	8.9	13.2	17.1	7.7	8.9	12.5	17.2	10.2
1250	6.5	8.4	12.5	17.3	6.8	9.4	13.6	15.8	9.8
1600	6.8	8.6	14.2	21.0	6.0	9.0	13.8	17.6	9.8
2000	8.7	10.1	16.5	26.6	7.9	9.9	16.9	20.4	11.6
2500	8.7	10.7	18.2	27.2	7.8	9.0	16.3	22.9	11.6
3200	14.8	12.5	25.4	26.6	8.6	10.6	19.2	24.9	13.8
4000	10.9	9.3	20.6	23.3	7.9	9.3	18.0	26.9	12.0
5000	7.8	9.5	20.0	22.3	8.2	8.9	17.7	24.8	11.3

Berekende Diffraction Index Difference [DID in dB] per microfoon en totaal

f(Hz)	mic.1	mic.2	mic.3	mic.4	mic.5	mic.6	mic.7	mic.8	DID
100	2.2	2.4	3.9	5.1	5.7	6.3	6.6	5.7	4.9
125	1.9	2.1	3.2	4.2	4.8	5.3	5.7	4.8	4.0
160	1.5	1.9	2.7	3.4	3.4	4.1	4.7	3.7	3.0
200	1.0	1.7	2.4	2.6	1.3	2.1	3.2	2.9	1.9
250	0.6	1.2	2.4	2.2	-0.2	0.2	1.8	4.0	1.0
320	-0.2	0.2	1.6	1.8	2.4	2.4	3.4	4.4	1.7
400	1.0	1.9	1.3	1.7	1.5	2.1	2.8	4.9	1.8
500	1.1	1.8	2.2	2.9	0.2	1.2	1.8	3.4	1.4
630	0.2	0.3	1.1	1.7	0.7	0.5	0.4	0.3	0.5
800	1.9	1.3	1.5	2.5	1.7	1.6	0.9	2.4	1.7
1000	2.6	2.5	2.6	1.5	2.6	2.1	1.5	2.7	2.4
1250	4.5	4.1	2.8	3.9	4.0	4.3	4.1	3.4	4.1
1600	3.9	3.3	3.5	4.6	2.8	3.6	3.6	1.2	3.4
2000	6.2	4.7	5.0	6.7	4.9	3.9	5.3	3.8	5.1
2500	7.5	5.8	6.3	9.2	5.3	3.9	4.6	3.8	5.8
3200	11.5	5.7	11.1	8.2	6.2	4.0	7.1	2.3	6.8
4000	10.6	4.7	8.2	6.0	7.9	5.3	6.8	10.2	7.5
5000	8.7	4.4	5.5	3.1	8.8	4.3	4.3	7.0	7.2

Single-number rating of Diffraction Index Difference [DL in dB] 2.7