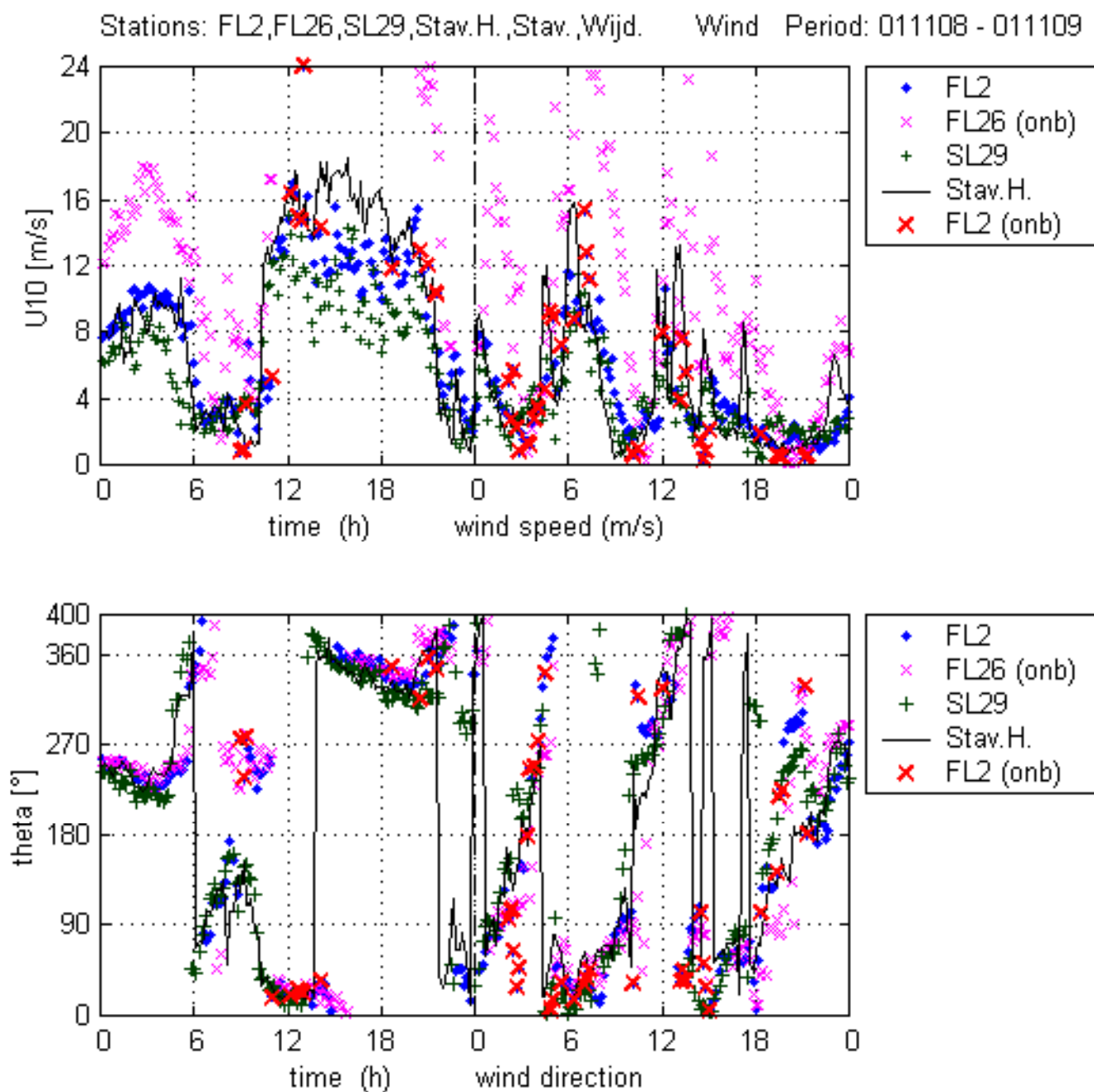

Bijlage C Stormperiode 8-9 november 2001

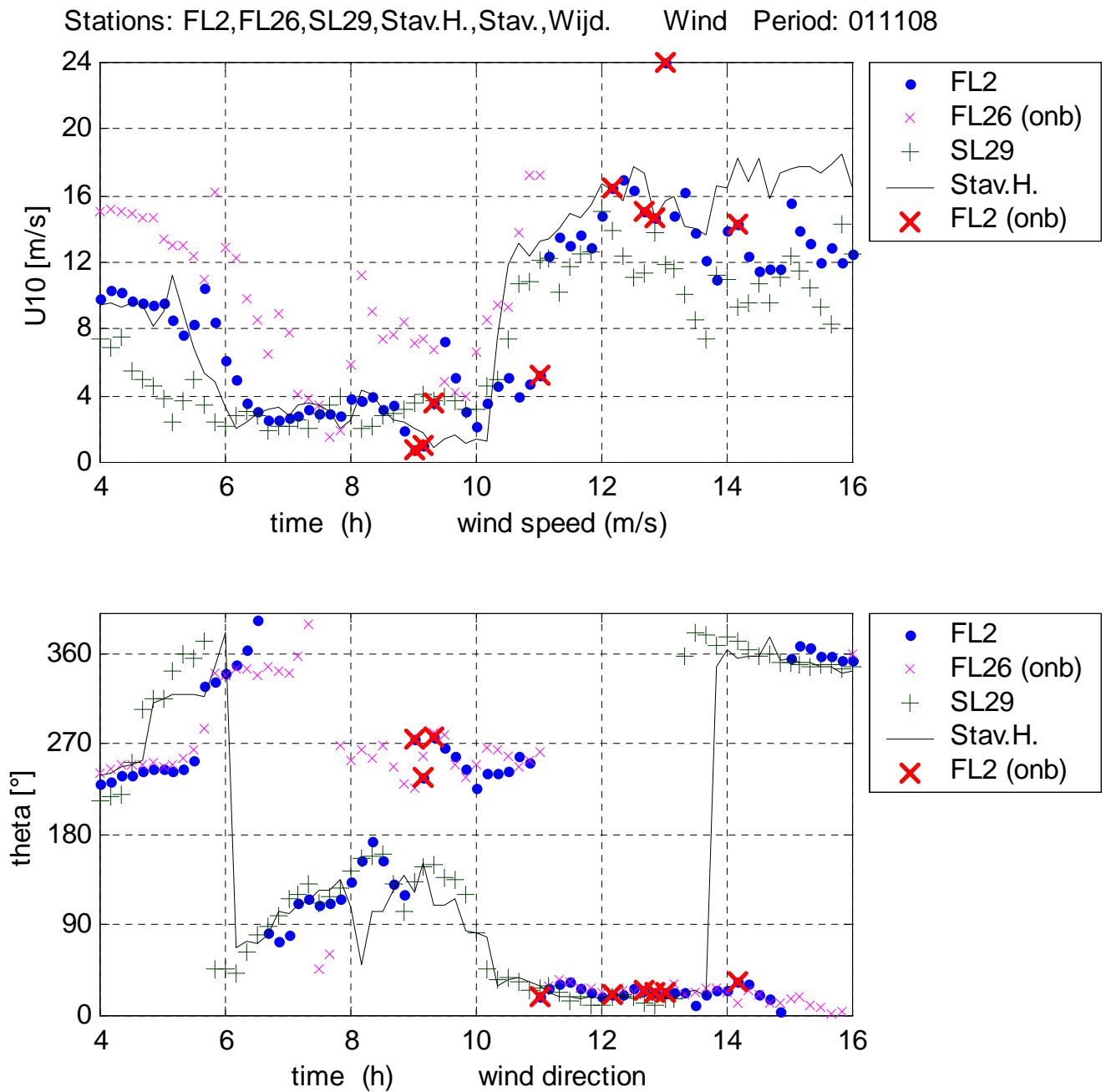
Lijst met figuren

Figuur C.1 Wind FL2 , FL26, SL29 en Stavoren-Haven, 8-9 nov. 2001	C1
Figuur C.2 Wind FL2 , FL26, SL29 en Stavoren-Haven, 8 nov. 2001 (4-16h)	C2
Figuur C.3 Golfhoogte, golfperiode en waterstand; alle stations; 8/11/2001	C3
Figuur C.4 Golfhoogte, golfperiode en waterstand; alle stations; 9/11/2001	C4
Figuur C.5 Golfspectra 8/11/2001; gemiddelde van 14-16h MET, alle stations.	C5
Figuur C.6 Wind en golven FL25, 8-9 november 2001	C6
Figuur C.7 Golven: 20-min. blok FL25; 8/11/ 2001, v.a. 14h40 MET	C7
Figuur C.8 Histogram momentane waterstand FL25, 8/11/2001, gemiddelde 14-16h MET	C8
Figuur C.9 Tijdsverloop momentane waterstand FL25; 8/11/01, 10h40-11h20 MET	C9
Figuur C.10 Tijdsverloop momentane waterstand SL29; 8/11/01, 8h20-17h MET	C10
Figuur C.11 Tijdsverloop momentane waterstand FL9; 9/11/01, 8h20-17h40 MET	C11

.....
 Figuur C.1 Wind FL2 , FL26, SL29 en
 Stavoren-Haven, 8-9 nov. 2001

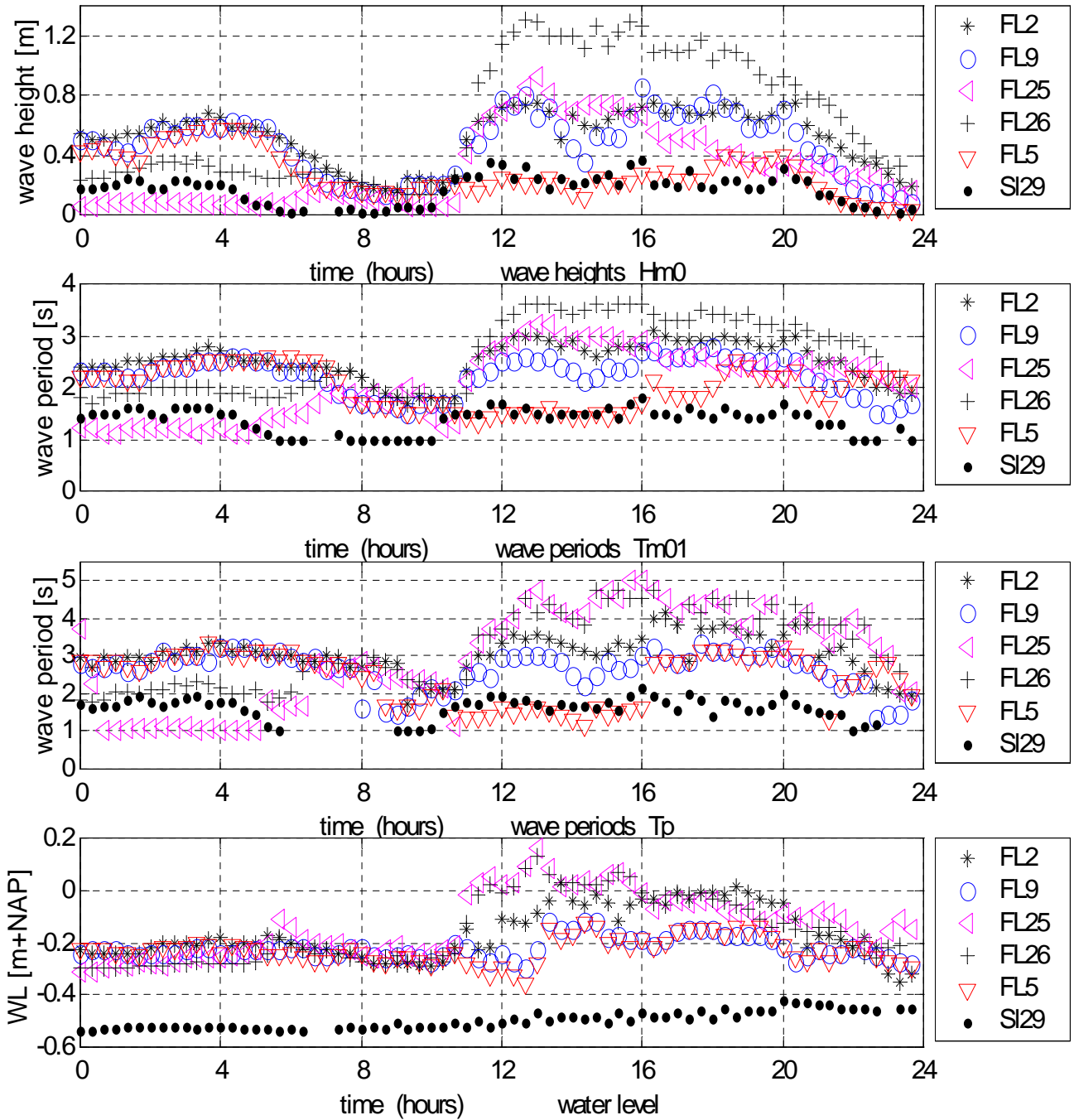


.....
 Figuur C.2 Wind FL2 , FL26, SL29 en
 Stavoren-Haven, 8 nov. 2001 (4-
 16h MET)



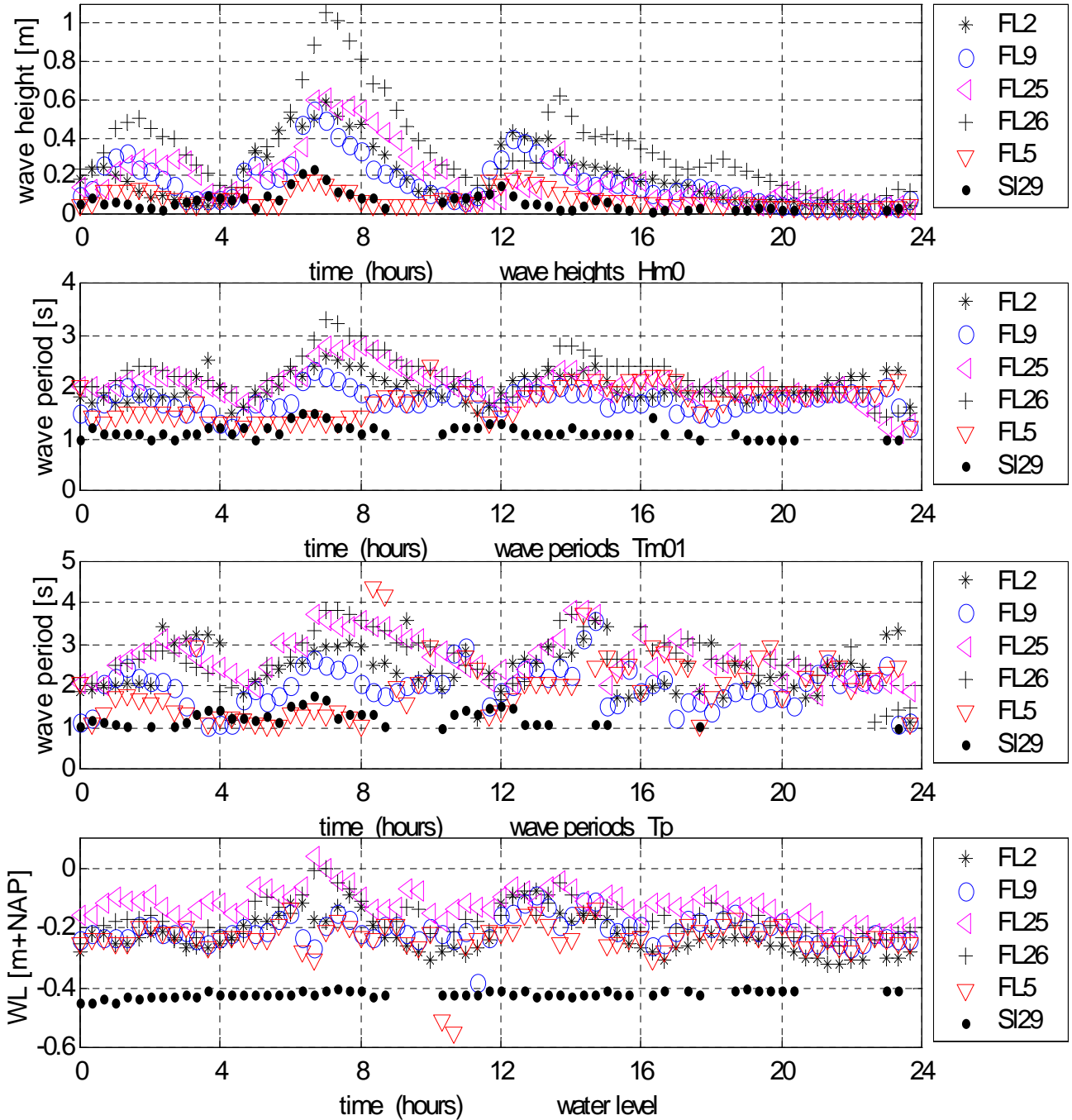
Figuur C.3 Golfhoogte, golfperiode en
waterstand; alle stations;
8/11/2001

Date: 011108

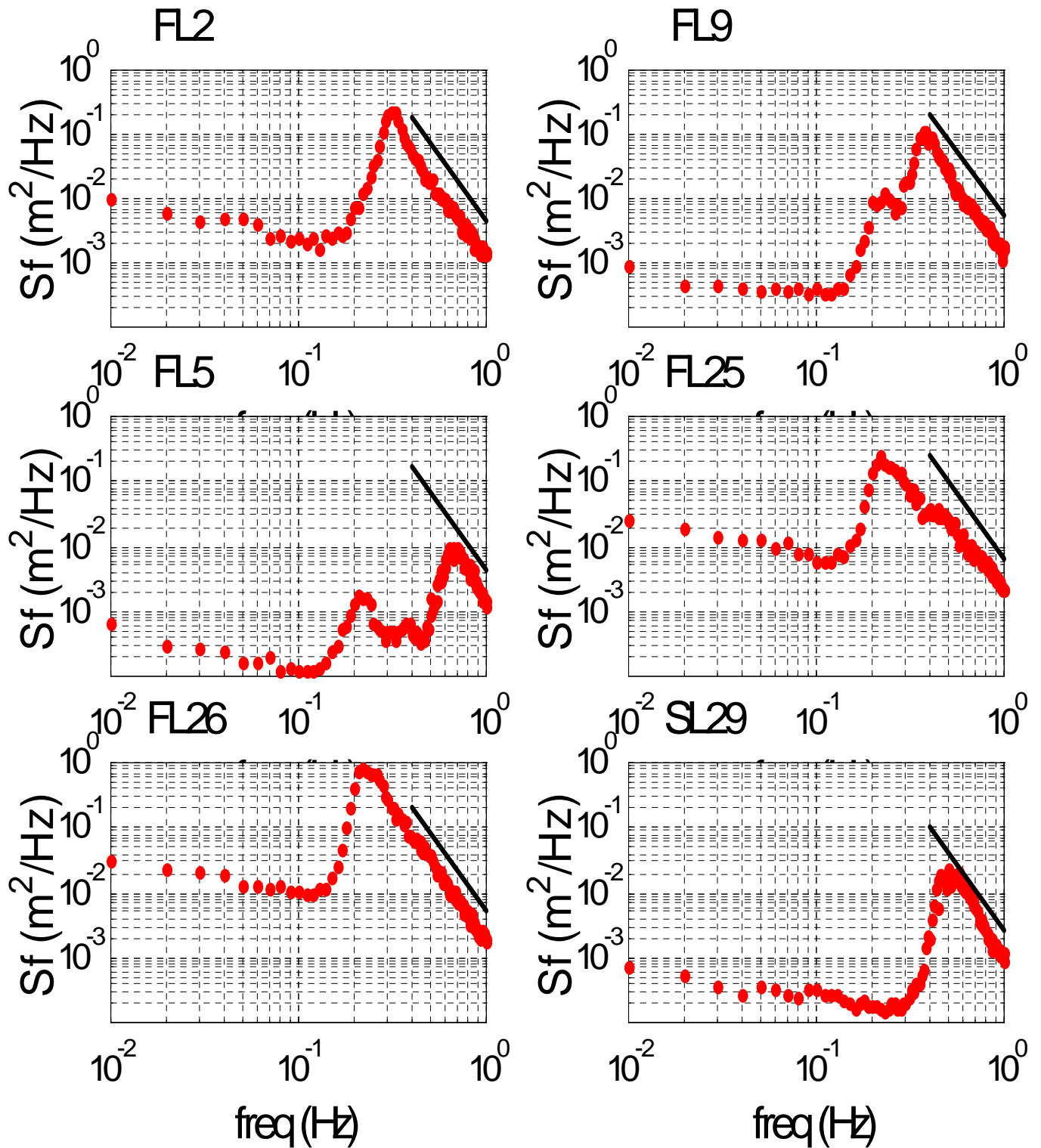


Figuur C.4 Golfhoogte, golfperiode en
waterstand; alle stations;
9/11/2001

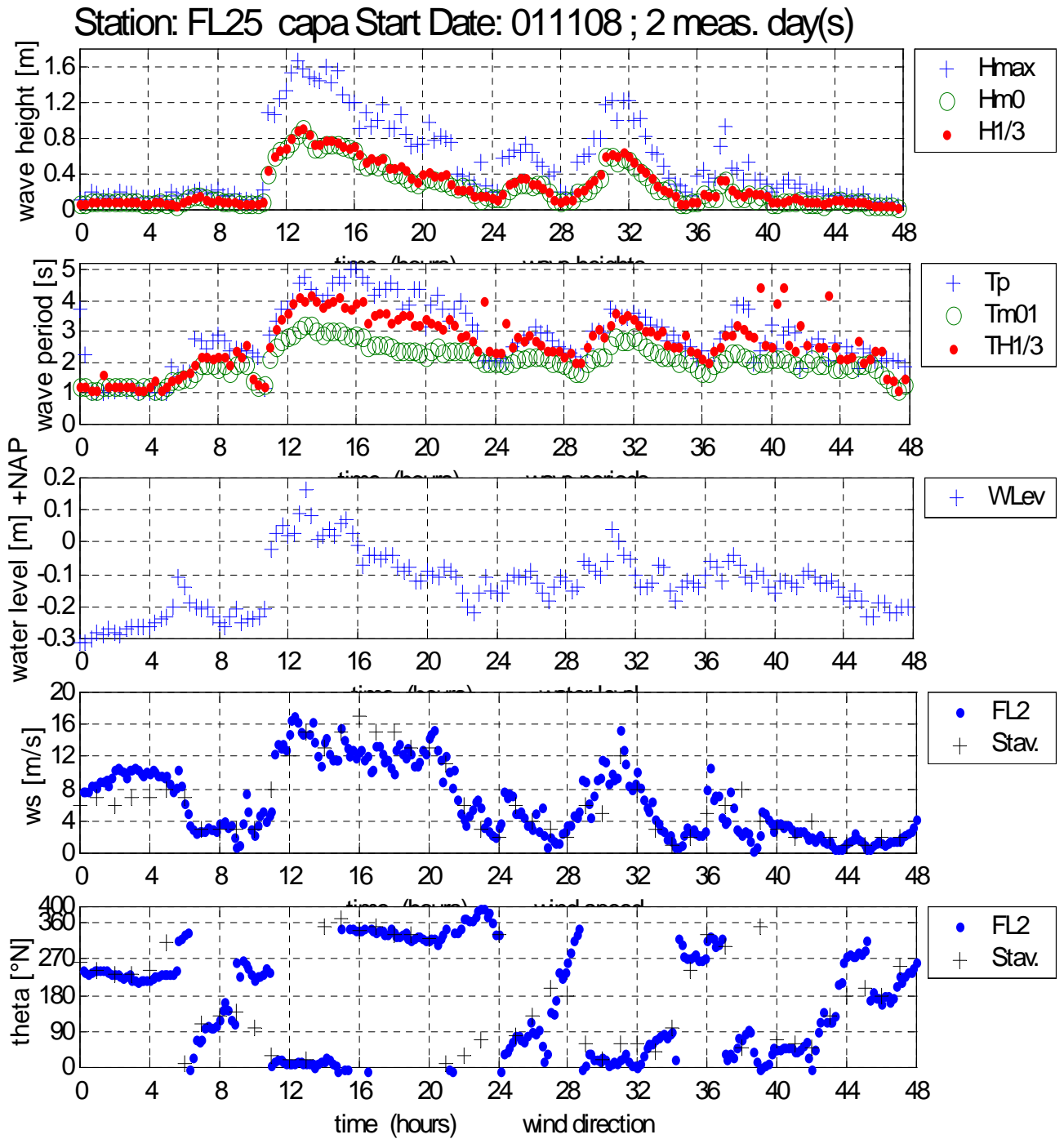
Date: 011109



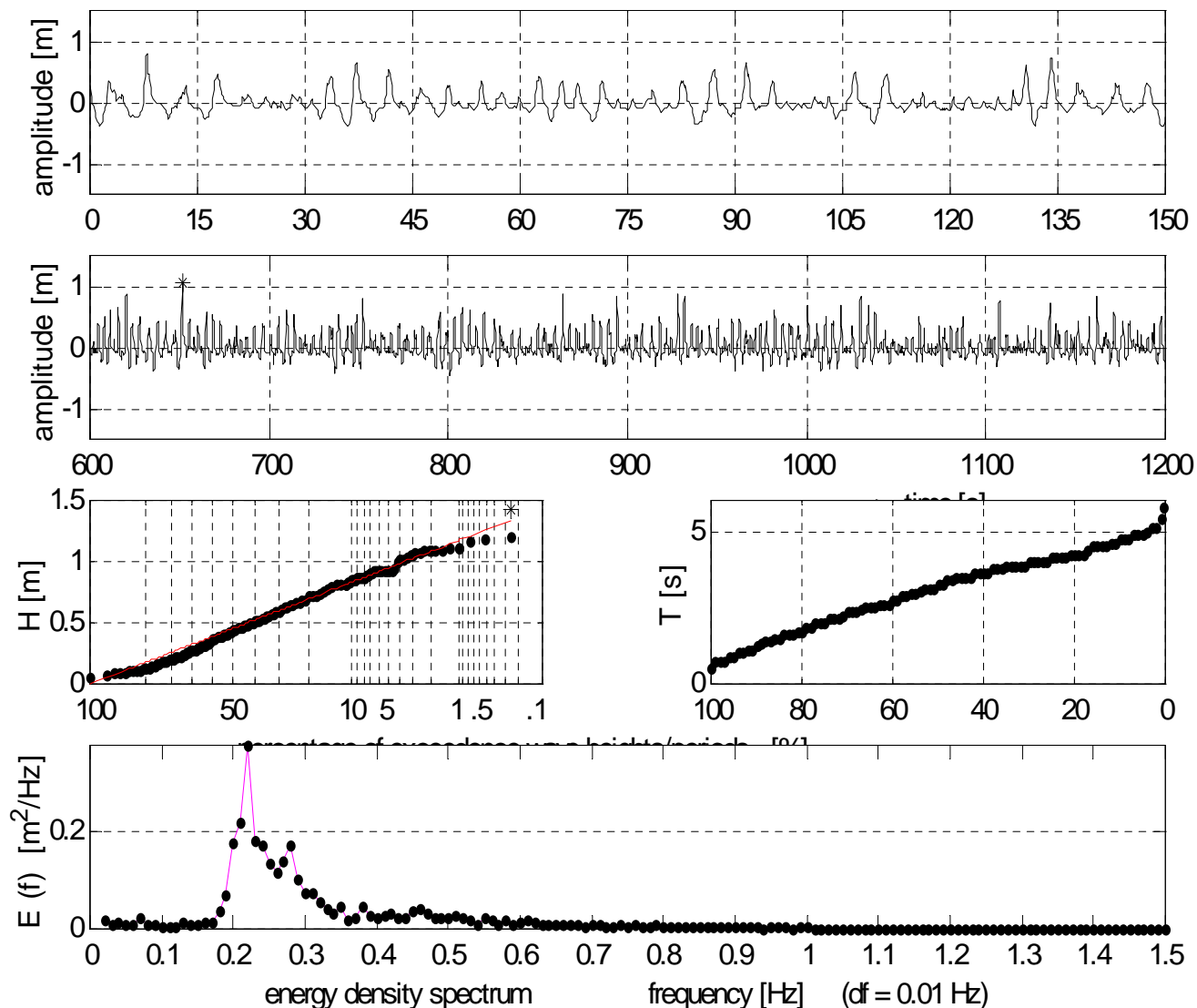
.....
 Figuur C.5 Golfspectra 8/11/2001;
 gemiddelde van 14-16h MET, alle
 stations.



Figuur C.6 Wind en golven FL25, 8-9 november 2001

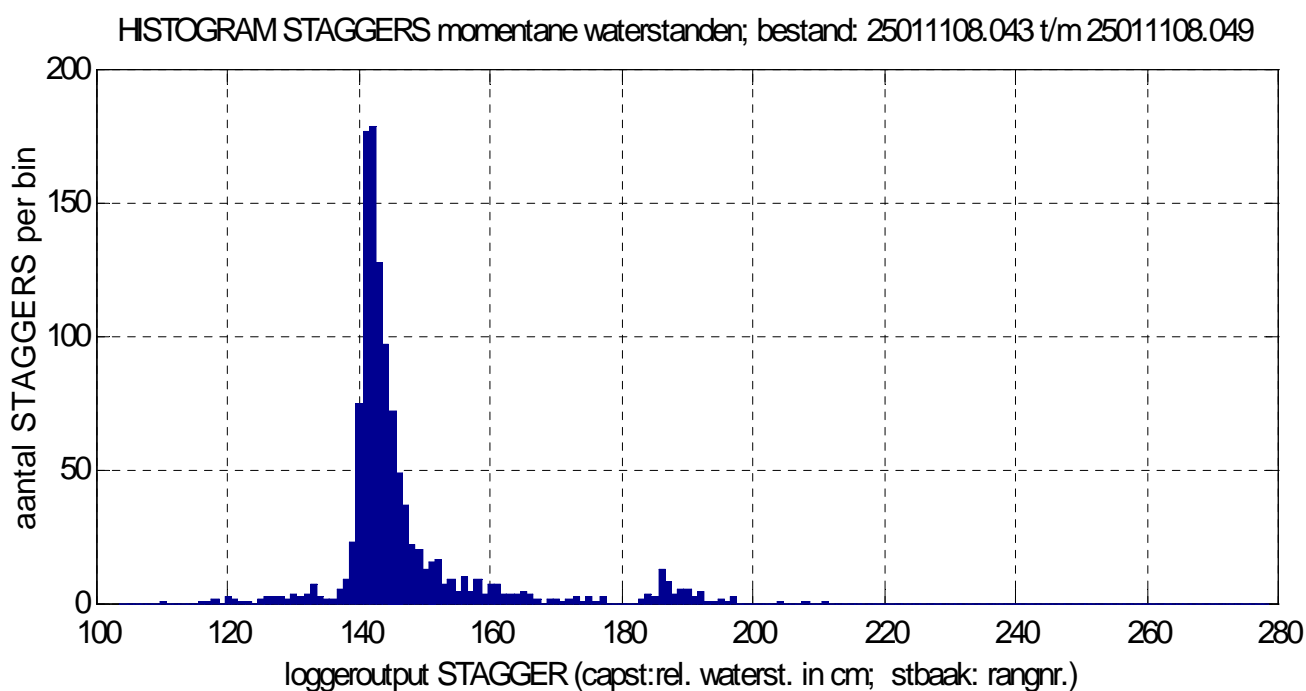
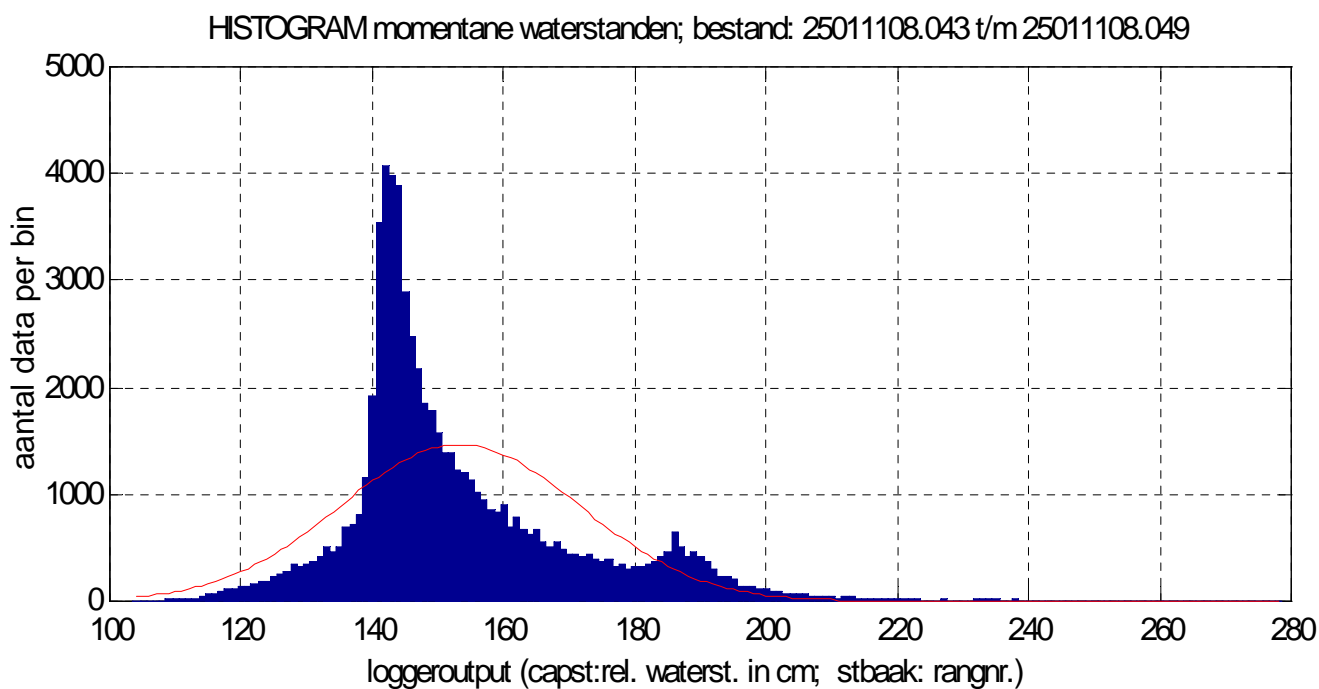


Station: FL25 capa Date: 011108 Start time: 1440 [hhmm]
 surface elevation (20 minutes, mean water level 0.02 m)



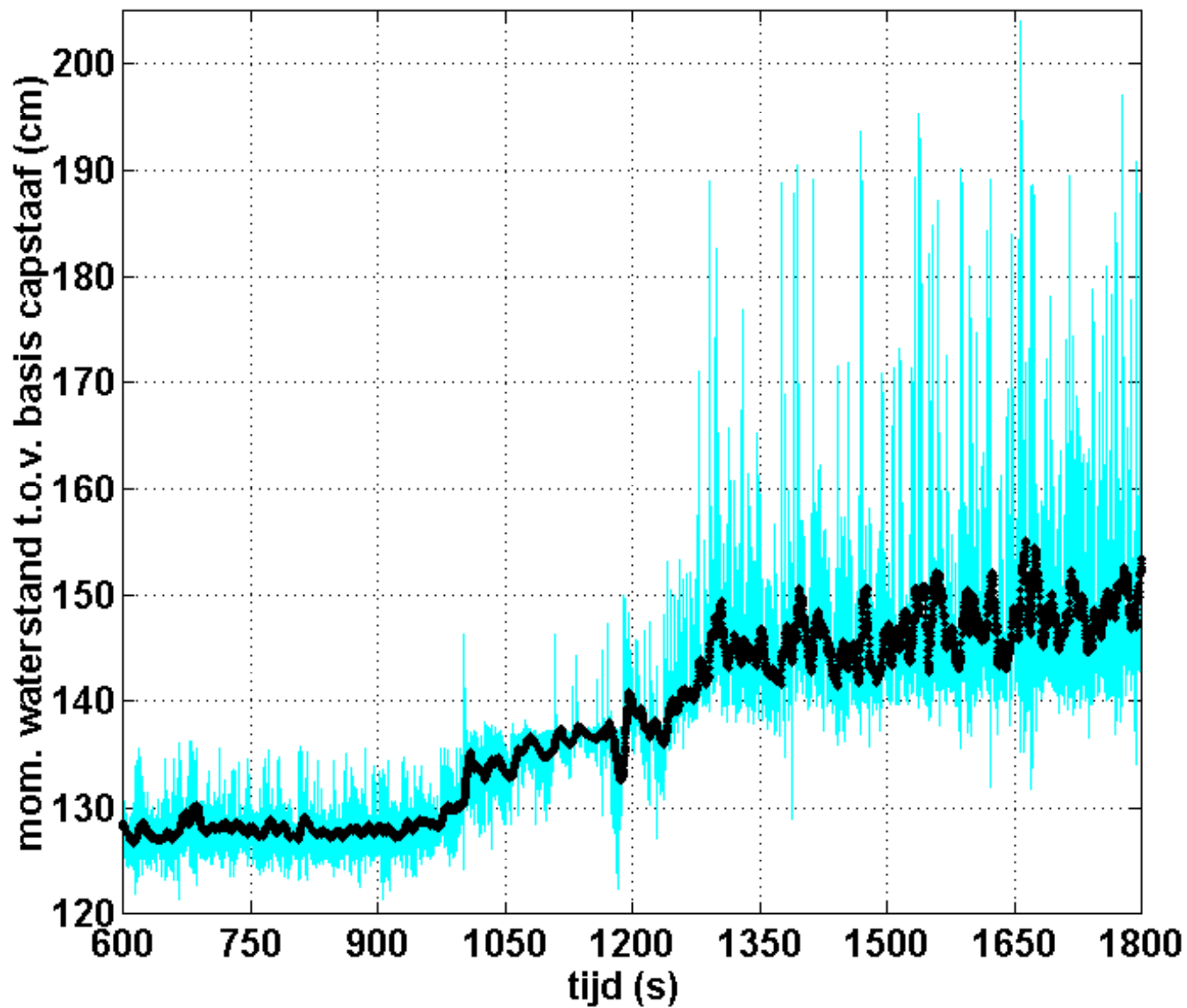
* $H_{\max} = 1.42 \text{ m}$	$T_{m-10} = 3.95 \text{ s}$	o $T_{\max} = 5.75 \text{ s}$
$H_{1/50} = 1.17 \text{ m}$	$T_{m01} = 3.01 \text{ s}$	$T_p = 4.55 \text{ s}$
$H_{1/10} = 0.99 \text{ m}$	$T_{m02} = 2.58 \text{ s}$	$T_{\text{gem}} = 3.08 \text{ s}$
$H_{m0} = 0.73 \text{ m}$	$T_{H_{\max}} = 5.25 \text{ s}$	$\text{SPGH} = 0.27 \text{ m}$
$H_{1/3} = 0.78 \text{ m}$	$T_{H_{1/3}} = 4.01 \text{ s}$	$\text{SPGT} = 1.27 \text{ s}$
$H_{\text{gem}} = 0.46 \text{ m}$	$T_{1/3} = 4.45 \text{ s}$	number = 388

.....
 Figuur C.8 Histogram momentane
 waterstand FL25, 8/11/2001,
 gemiddelde 14-16h MET

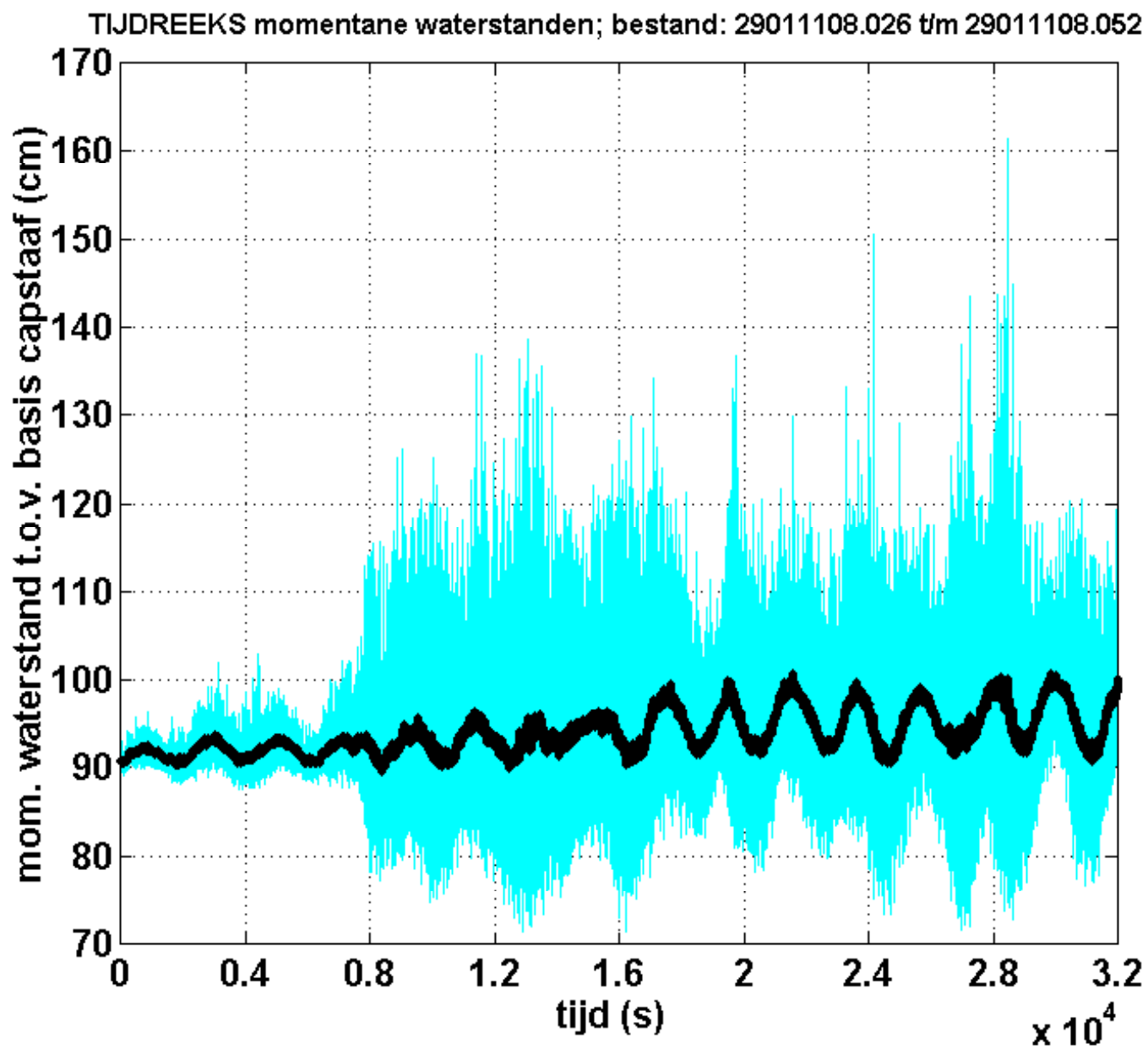


.....
Figuur C.9 Tijdsverloop momentane
waterstand (■) + 15 sec. gem (—)
FL25; 8/11/01, 10h40-11h20 MET

TIJDREEKS momentane waterstanden; bestand: 25011108.033 t/m 25011108.034



.....
Figuur C.10 Tijdsverloop momentane
waterstand (■) + 15 sec. gem (—)
SL29; 8/11/01, 8h20-17h MET



.....
Figuur C.11 Tijdsverloop momentane
waterstand (—) + 15 sec. gem (—)
FL9; 9/11/01, 8h20-17h40 MET

