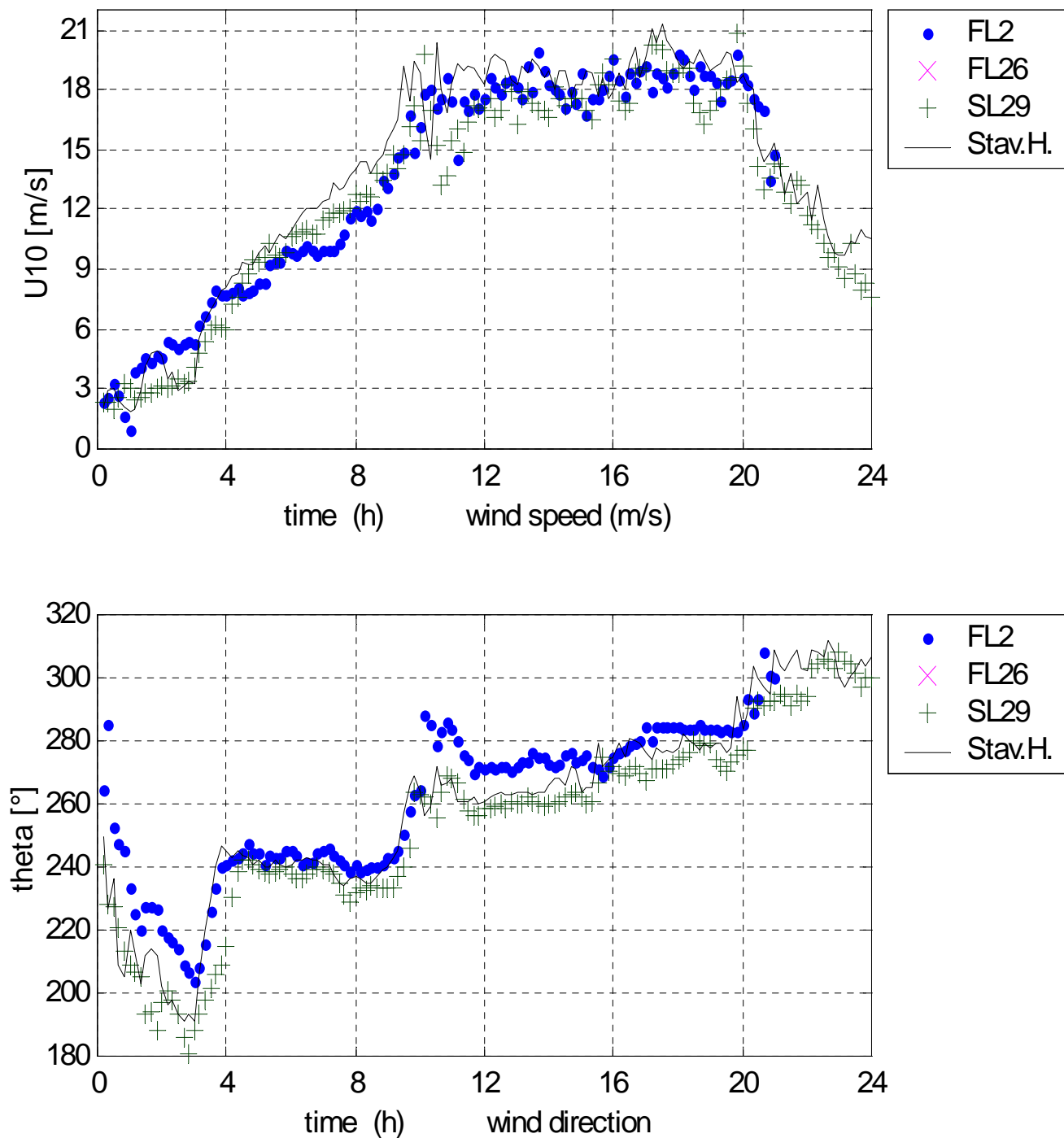

Bijlage D Stormperiode 28 december 2001

Lijst met figuren

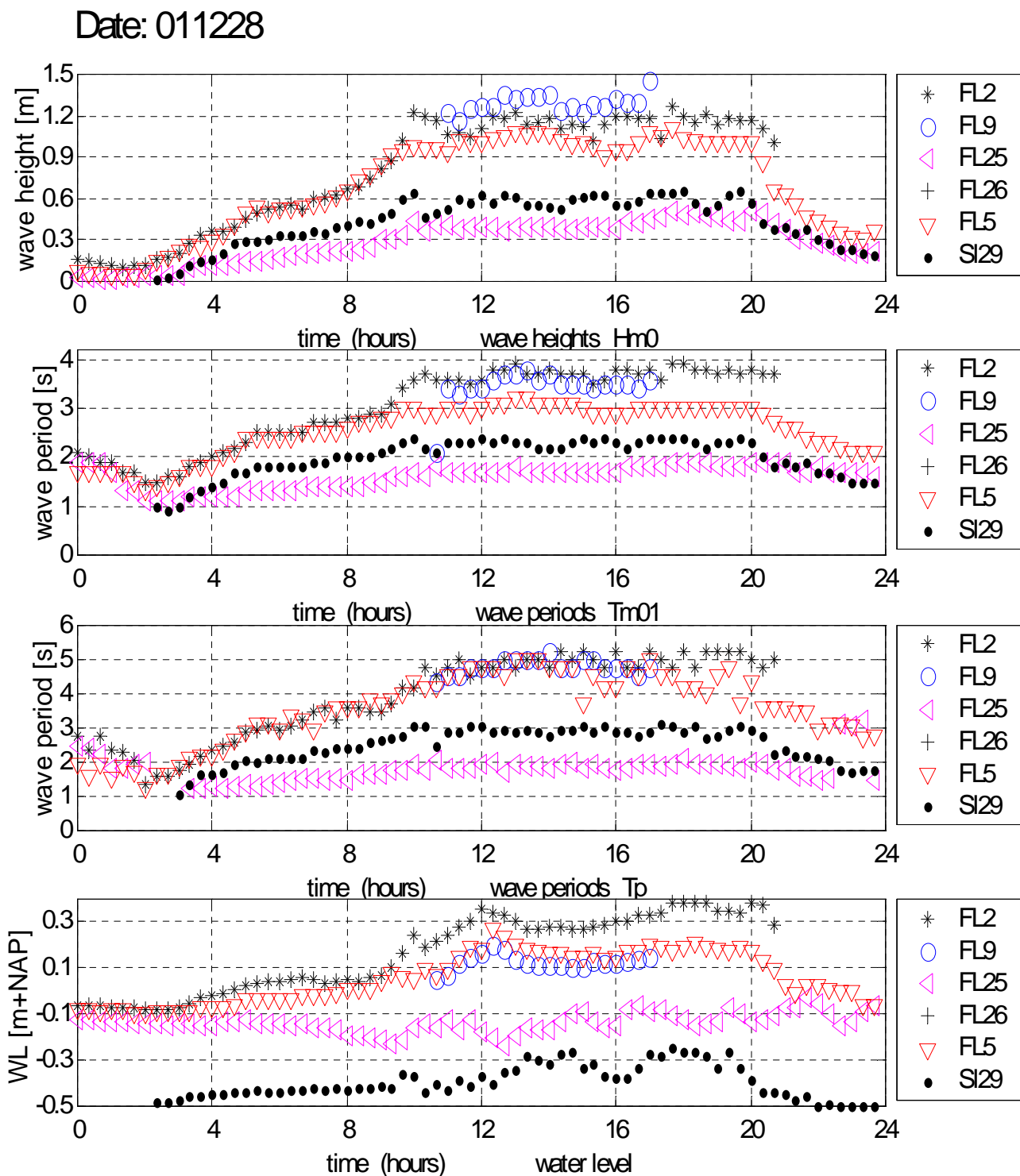
Figuur D.1 Wind FL2 , (FL26), SL29 en Stavoren, 28/12/ 2001	D1
Figuur D.2 Golfhoogte, golfperiode en waterstand; alle stations; 28/12/2001	D2
Figuur D.3 Golfspectra 28/12/2001, gemiddelde 15-17h MET; alle stations	D3
Figuur D.4 Wind en golven SL29, 28/12/2001	D4
Figuur D.5 Golven FL2 en golfoploop Rott. Hoek, 28/12/2001.	D5
Figuur D.6 Golfoploop: 20-min. blok Rott. Hoek,; 28/12/ 2001, v.a. 18h MET	D6
Figuur D.7 Golven: 20-min. blok FL5; 28/12/ 2001, v.a. 15h MET	D7
Figuur D.8 Golven: 20-min. blok SL29; 28/12/ 2001, v.a. 18h MET	D8
Figuur D.9 Histogram momentane waterstand SL29, 28/12/2001, 17-19h MET	D9

Figuur D.1 Wind FL2, (FL26), SL29 en Stavoren, 28/12/ 2001

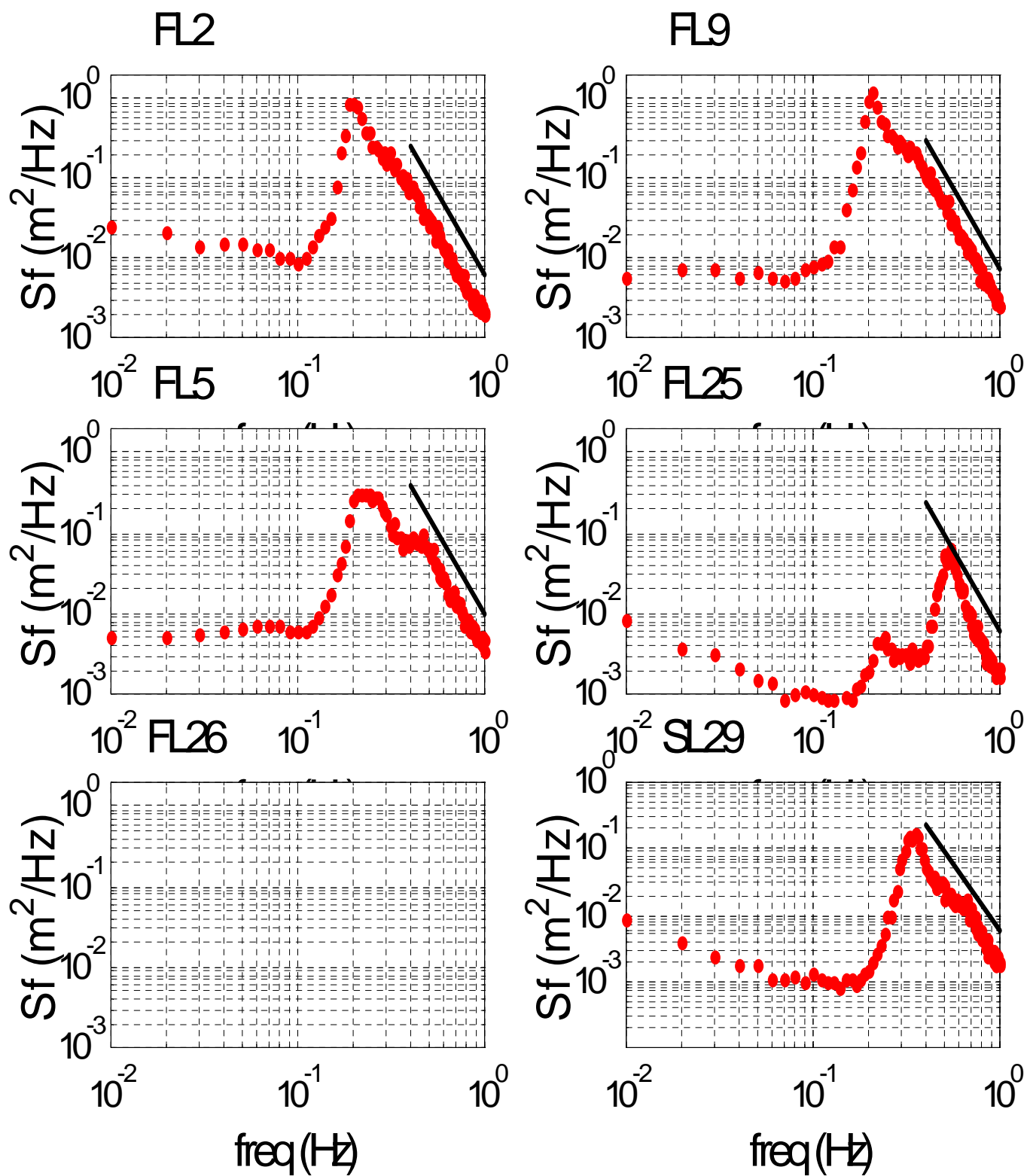
Stations: FL2,FL26,SL29,Stav.H.,Stav.,Wijd. Wind Period: 011228



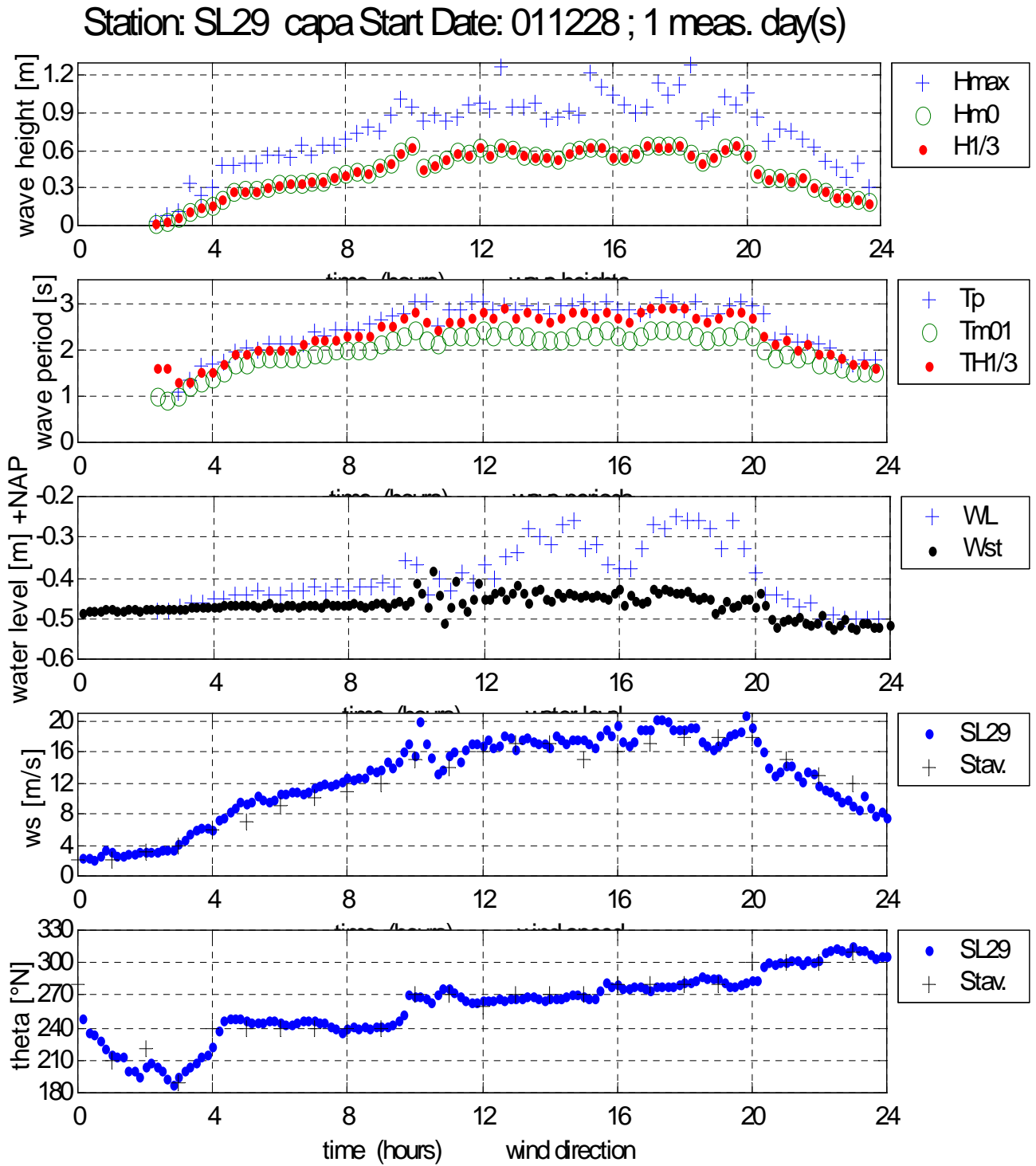
Figuur D.2 Golfhoogte, golfperiode en
waterstand; alle stations; 28/12/2001



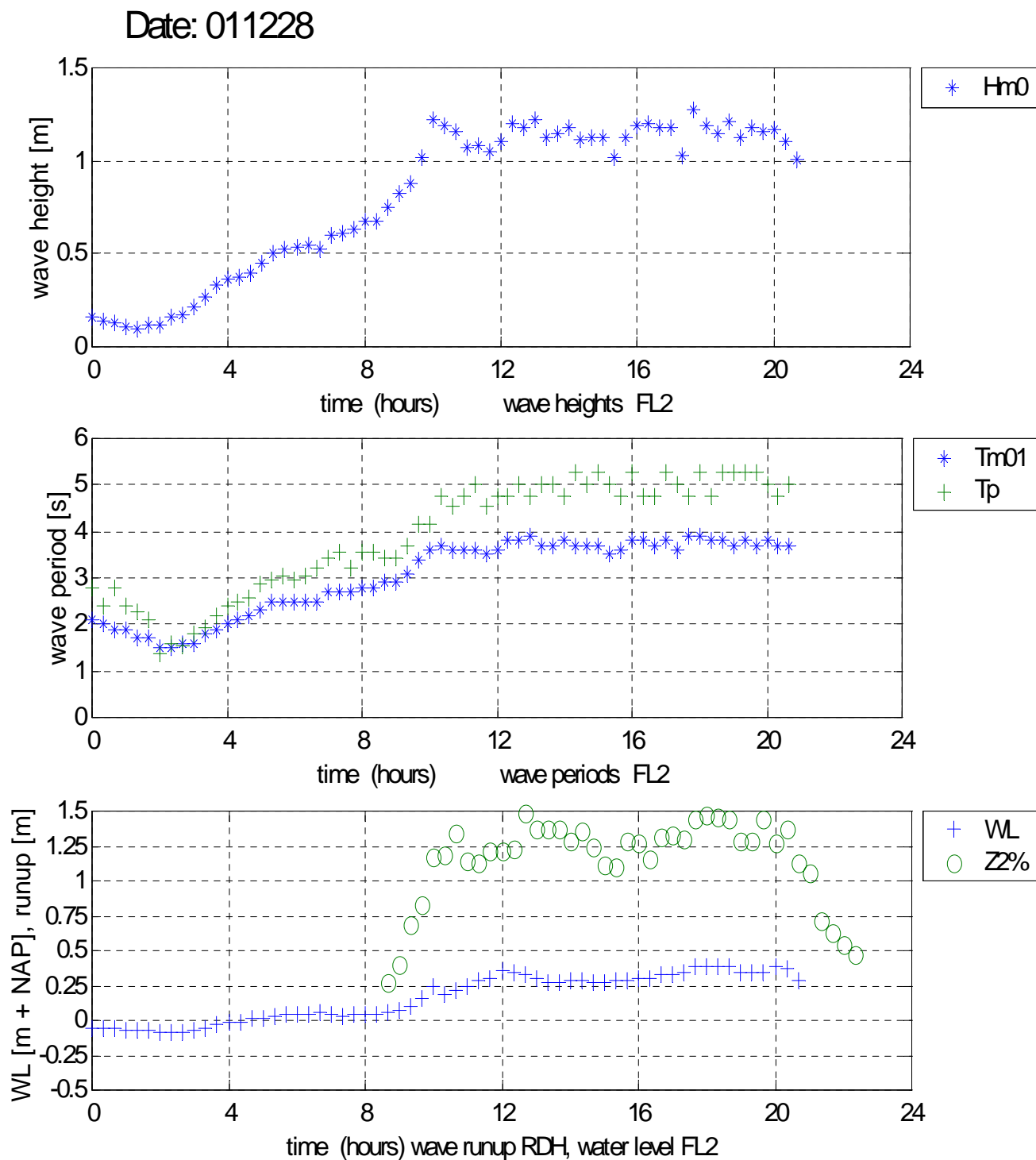
Figuur D.3 Golspectra 28/12/2001, gemiddelde
15-17h MET; alle stations



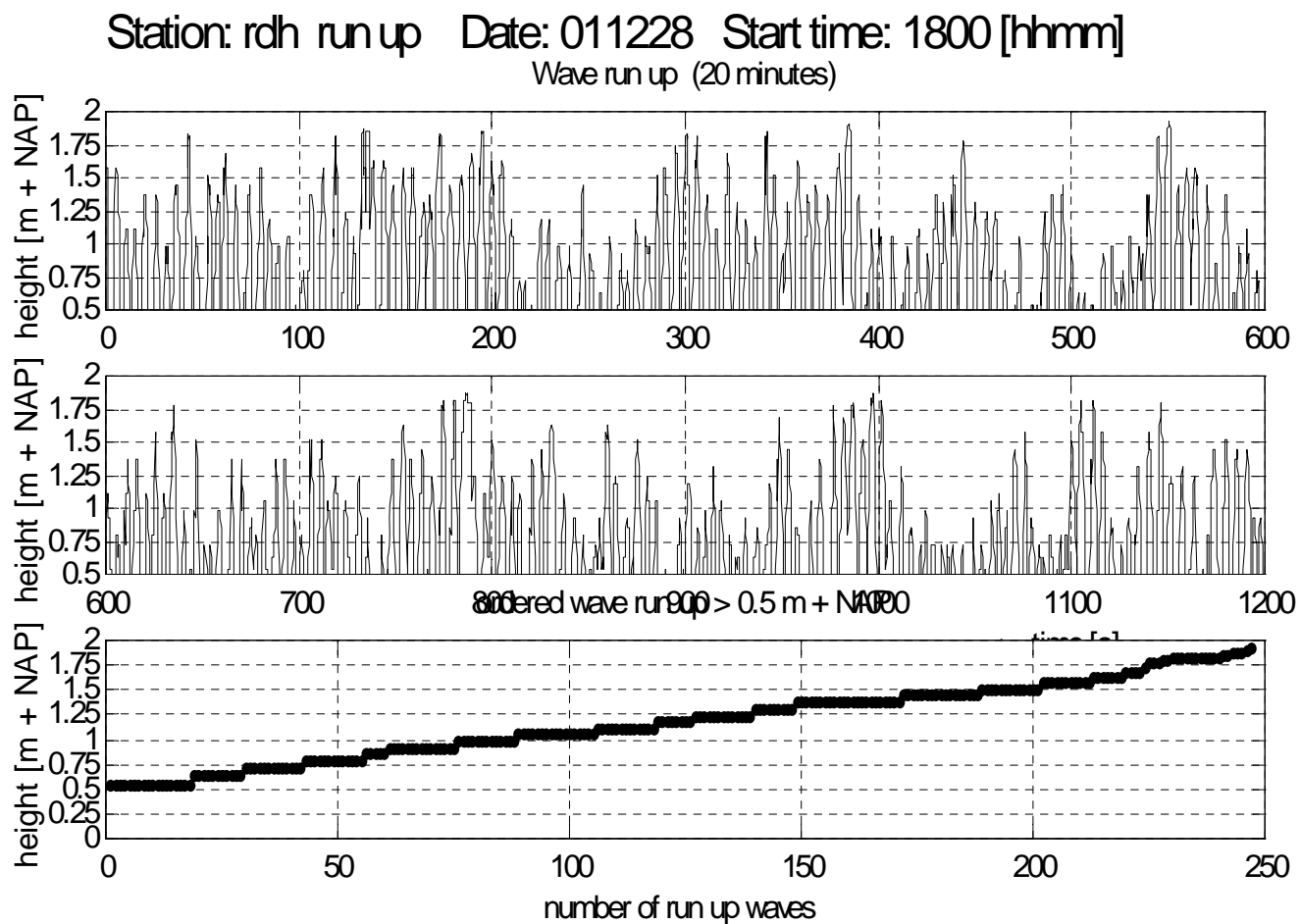
Figuur D.4 Wind en golven SL29, 28/12/2001



.....
 Figuur D.5 Golven FL2 en golfoploop Rott.
 Hoek, 28/12/2001.



Figuur D.6 Golfploop: 20-min. blok Rott. Hoek,;
28/12/ 2001, v.a. 18h MET

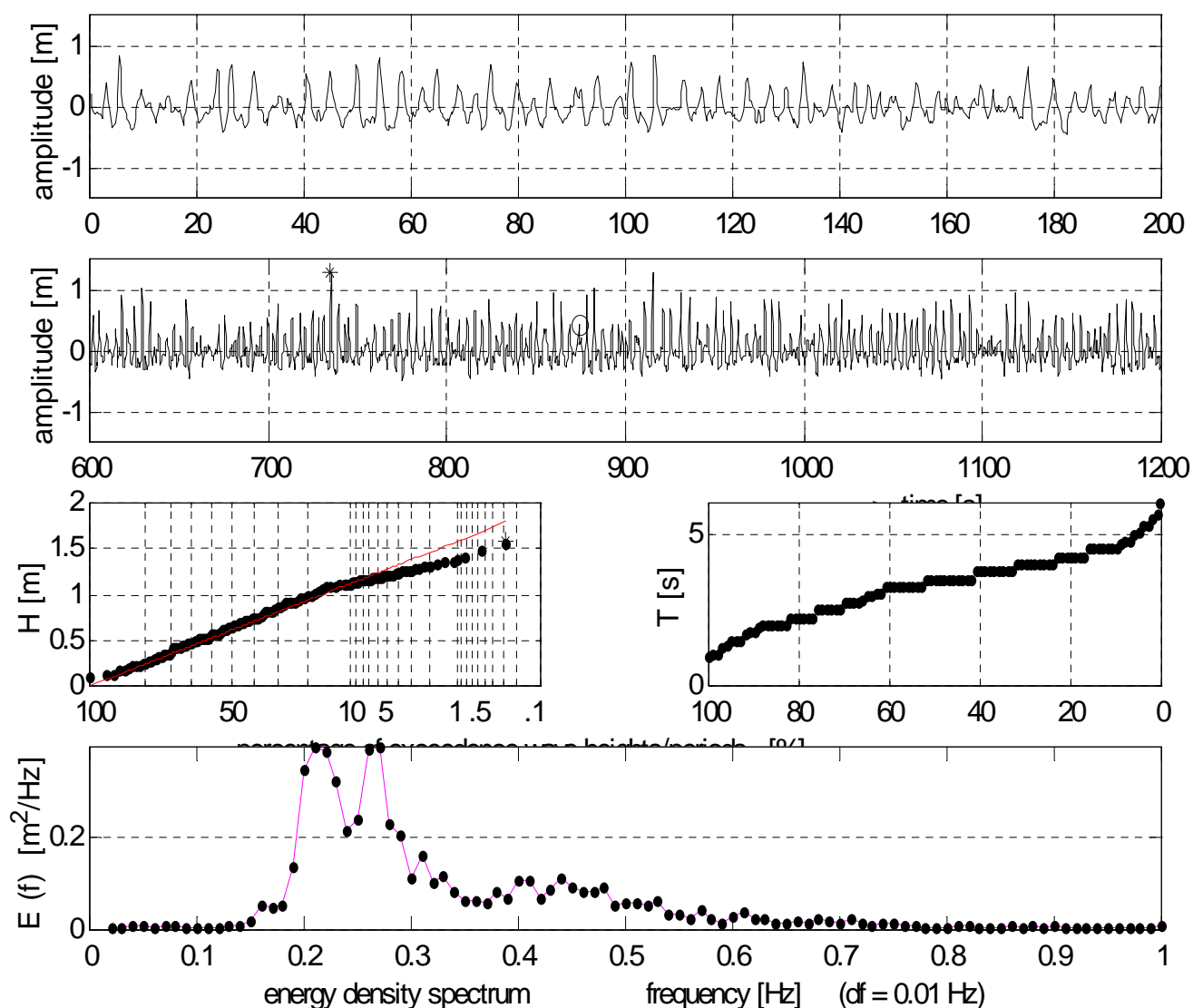


hmax = 1.92 m + NAP
h1perc = 1.87 m + NAP
h2perc = 1.85 m + NAP
h5perc = 1.82 m + NAP
h10perc = 1.64 m + NAP
number = 247

waterlevel = 0.38 m + NAP
Hm0 = 1.19 m
Tp = 5.26 s
number waves = 316
Z2perc = 1.47 m

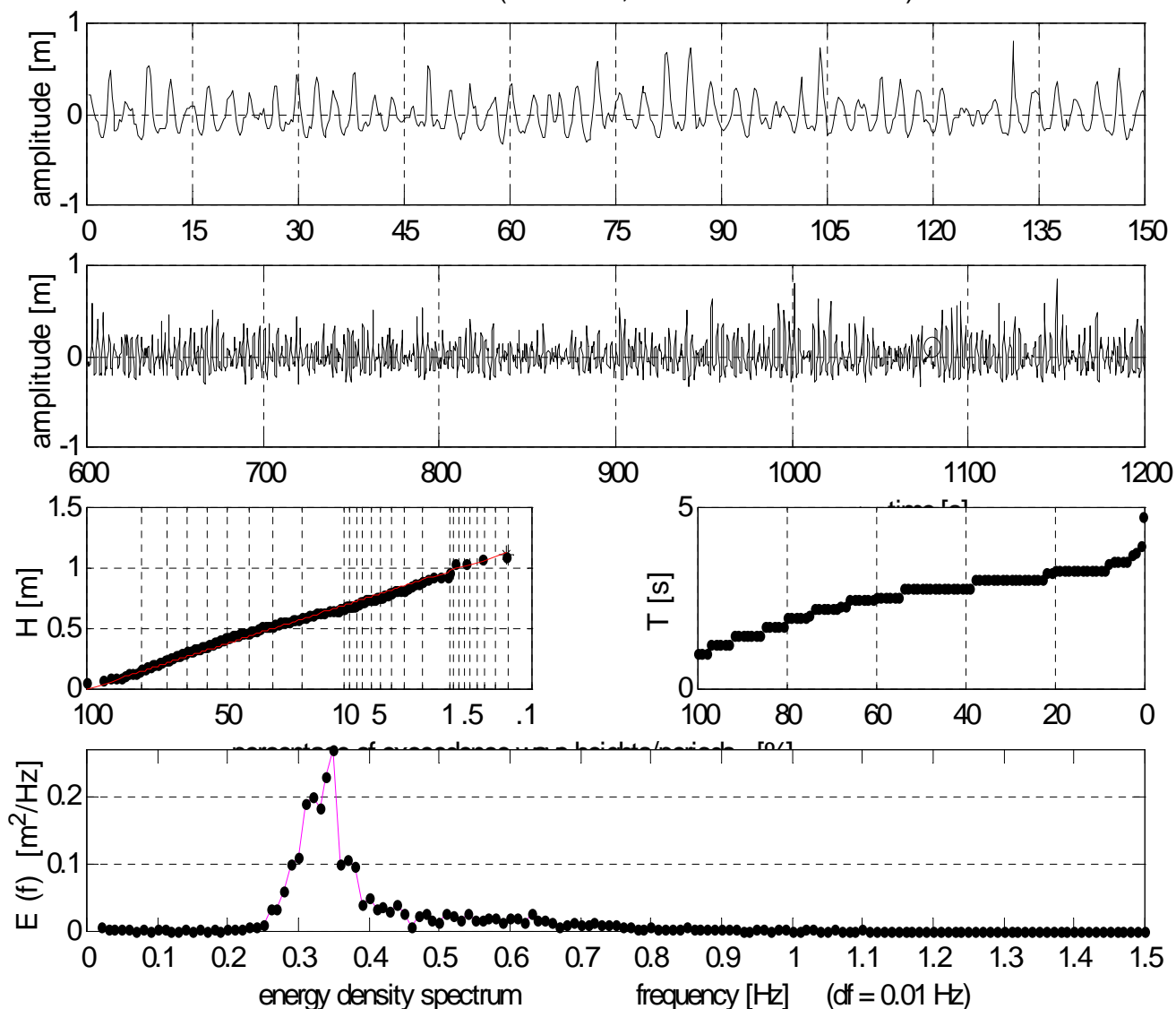
Figuur D.7 Golven: 20-min. blok FL5; 28/12/
2001, v.a. 15h MET

Station: FL5 capa Date: 011228 Start time: 1500 [hhmm]
surface elevation (20 minutes, mean water level 0.18 m)



* Hmax = 1.59 m	Tm-10 = 3.58 s	o Tmax = 6.00 s
H1/50 = 1.44 m	Tm01 = 2.97 s	Tp = 3.70 s
H1/10 = 1.25 m	Tm02 = 2.69 s	Tgem = 3.31 s
Hm0 = 1.00 m	THmax = 4.00 s	SPGH = 0.32 m
H1/3 = 1.04 m	TH1/3 = 3.86 s	SPGT = 1.10 s
Hgem = 0.67 m	T1/3 = 4.48 s	number = 361

Station: SL29 capa Date: 011228 Start time: 1800 [hhmm]
surface elevation (20 minutes, mean water level -0.30 m)



* Hmax = 1.12 m	Tm-10 = 2.77 s	o Tmax = 4.75 s
H1/50 = 1.00 m	Tm01 = 2.41 s	TP = 2.86 s
H1/10 = 0.80 m	Tm02 = 2.22 s	Tgem = 2.57 s
Hm0 = 0.65 m	THmax = 3.00 s	SPGH = 0.20 m
H1/3 = 0.64 m	TH1/3 = 2.87 s	SPGT = 0.72 s
Hgem = 0.42 m	T1/3 = 3.28 s	number = 465

Figuur D.9 Histogram momentane waterstand
SL29, 28/12/2001, 17-19h MET

