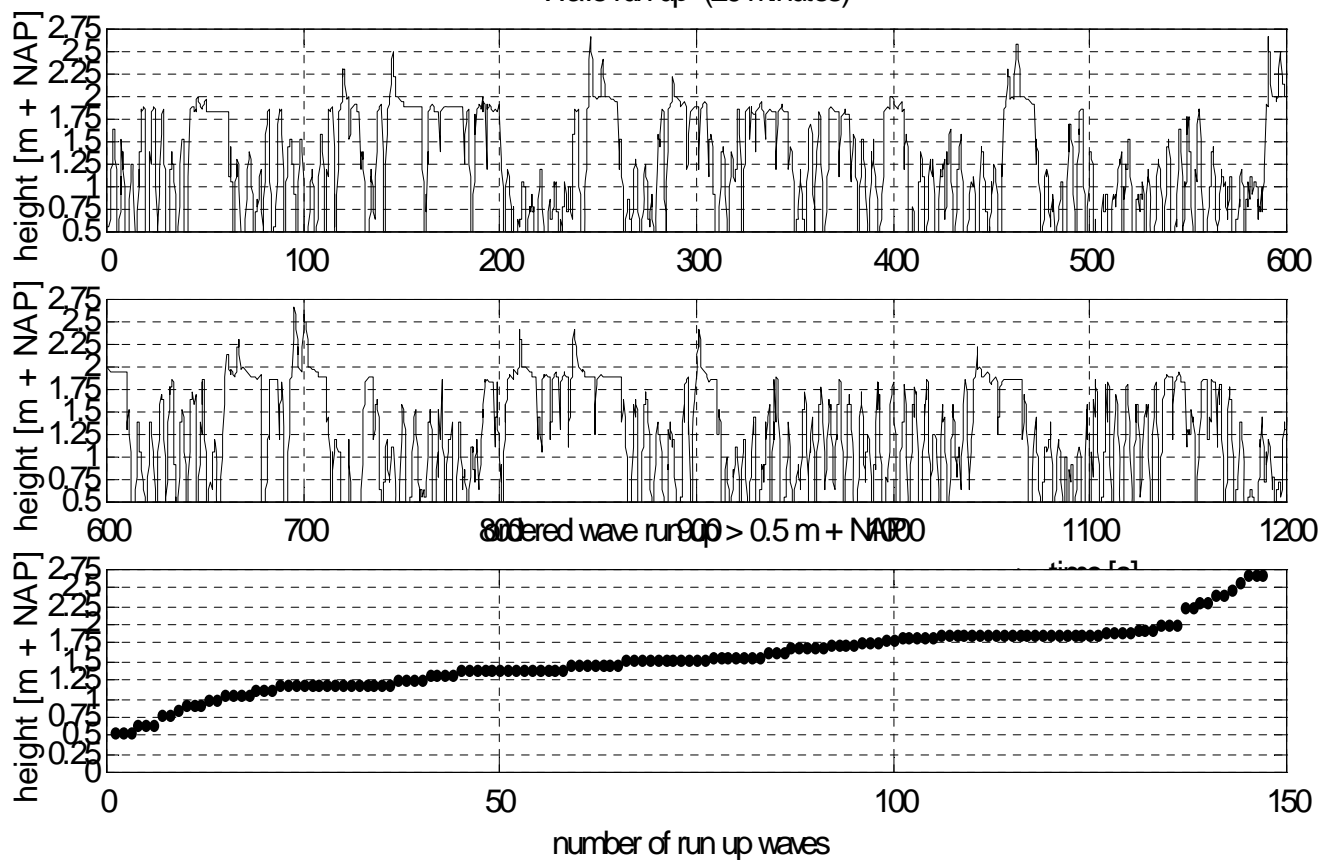


.....
 Figuur E.16 Golfoploop; 20-min. blok Rott.Hoek;
 26/02/2002, v.a. 13h20 MET

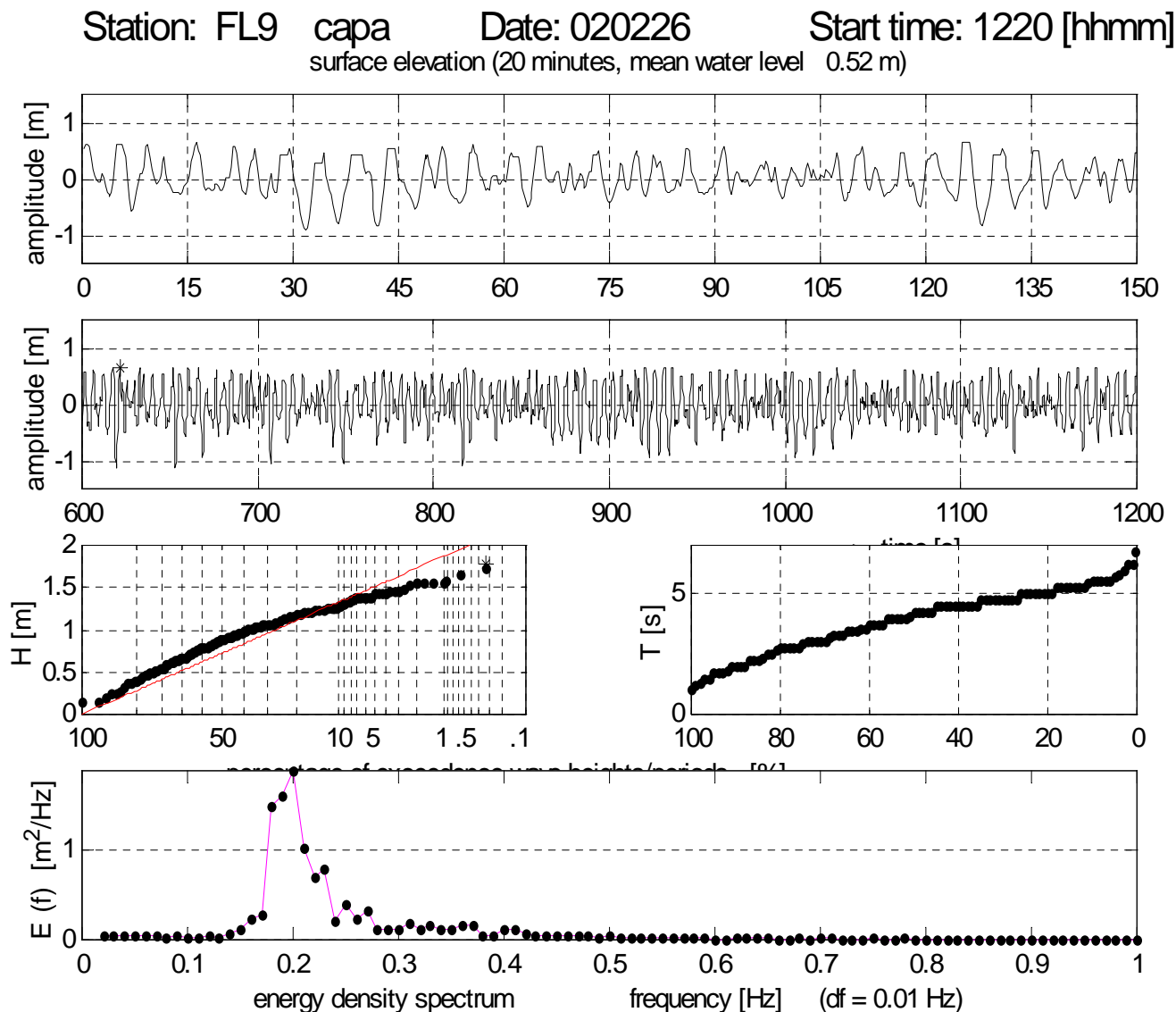
Station: rdh run up Date: 020226 Start time: 1320 [hhmm]
 Wave run up (20 minutes)



hmax = 2.67 m + NAP
 h1perc = 2.60 m + NAP
 h2perc = 2.40 m + NAP
 h5perc = 1.95 m + NAP
 h10perc = 1.87 m + NAP
 number = 147

waterlevel = 0.63 m + NAP
 Hm0 = 1.46 m
 Tp = 5.26 s
 number waves = 281
 Z2perc = 1.77 m

Figuur E.17 Golven; 20-min. blok FL9;
26/02/2002, v.a. 12h20 MET



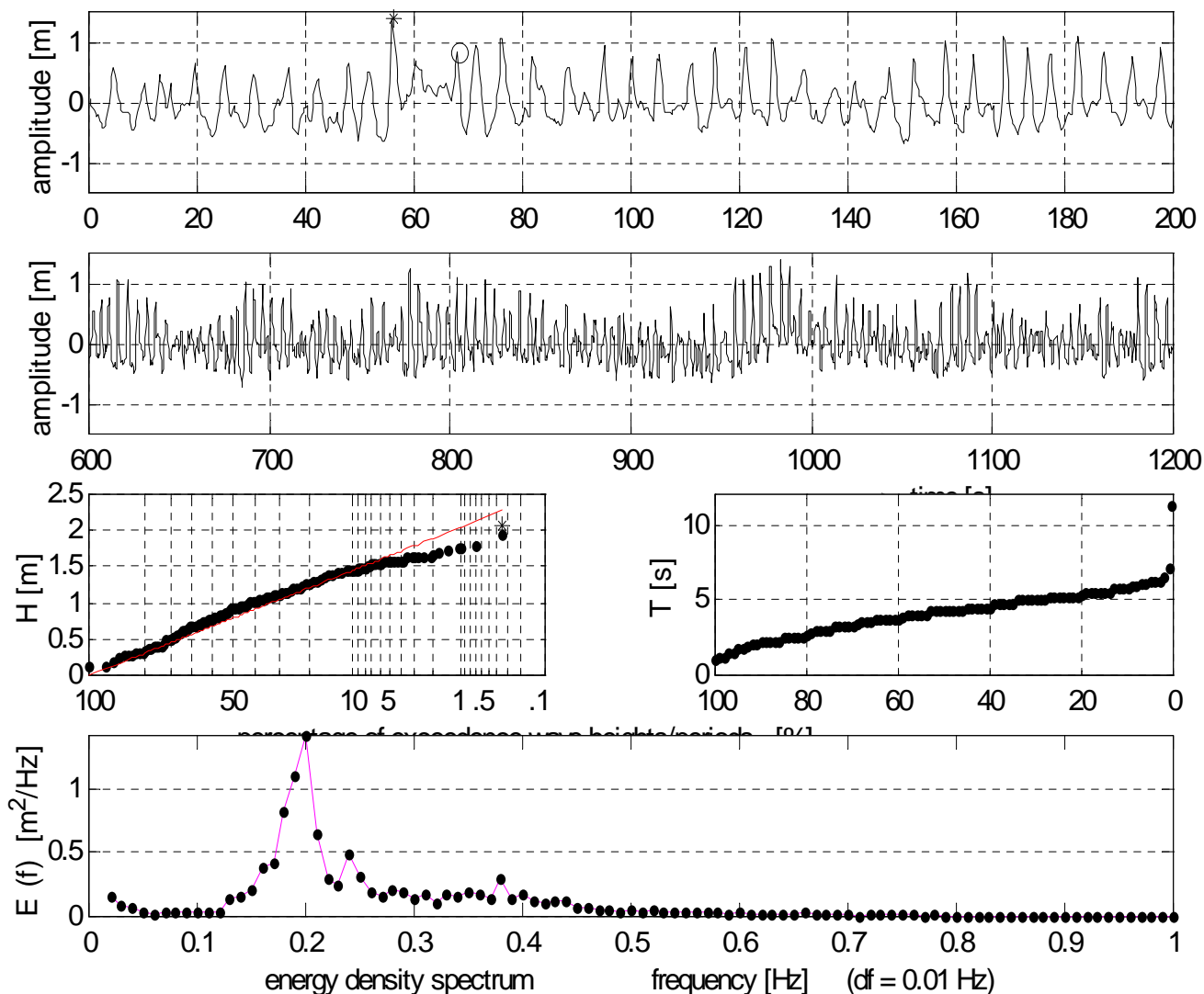
| | | |
|----------------------|---------------------|----------------------|
| * $H_{max} = 1.77$ m | $T_{m-10} = 4.80$ s | o $T_{max} = 6.75$ s |
| $H_{1/50} = 1.64$ m | $T_{m01} = 4.05$ s | $T_p = 5.00$ s |
| $H_{1/10} = 1.45$ m | $T_{m02} = 3.64$ s | $T_{gem} = 3.91$ s |
| $H_{m0} = 1.41$ m | $T_{Hmax} = 5.25$ s | $SPGH = 0.35$ m |
| $H_{1/3} = 1.24$ m | $T_{H1/3} = 4.78$ s | $SPGT = 1.31$ s |
| $H_{gem} = 0.86$ m | $T_{1/3} = 5.26$ s | number = 304 |

Rijkswaterstaat RIZA/RDIJ

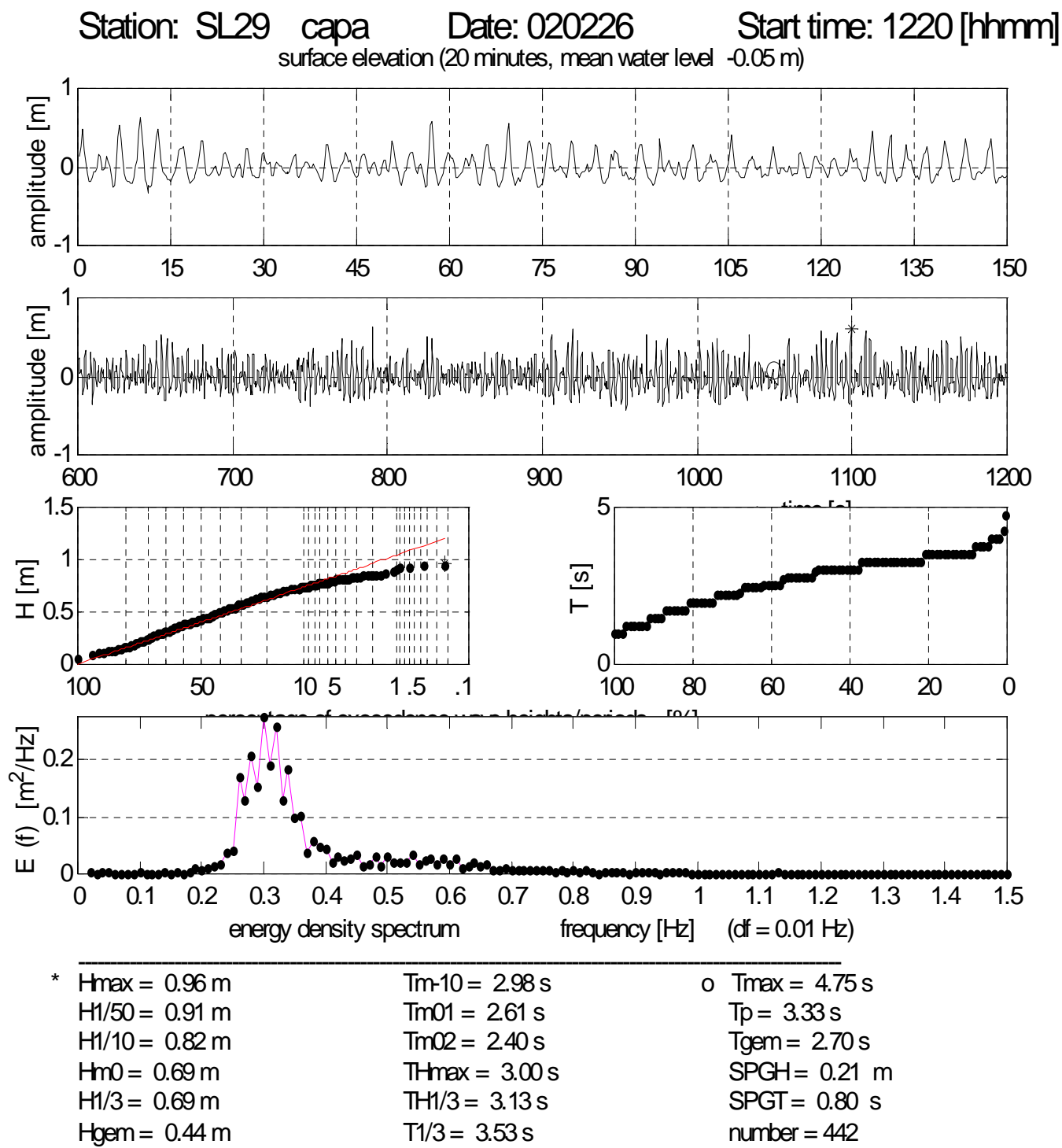
Golfmetingen IJsselmeer (15-Oct-2002) 38

Figuur E.18 Golven; 20-min. blok FL5;
26/02/2002, v.a. 12h20 MET

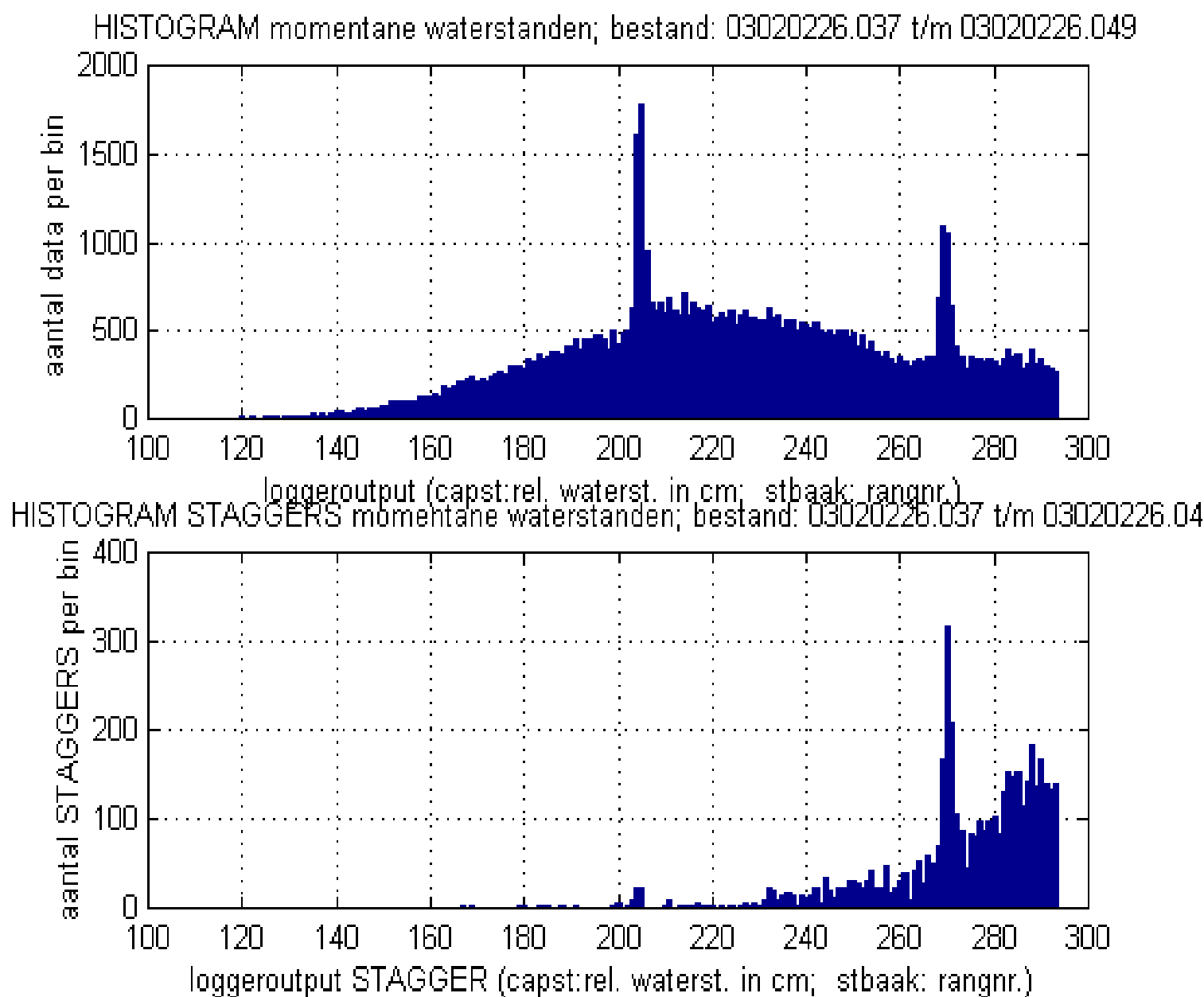
Station: FL5 capa Date: 020226 Start time: 1220 [hhmm]
surface elevation (20 minutes, mean water level 1.48 m)



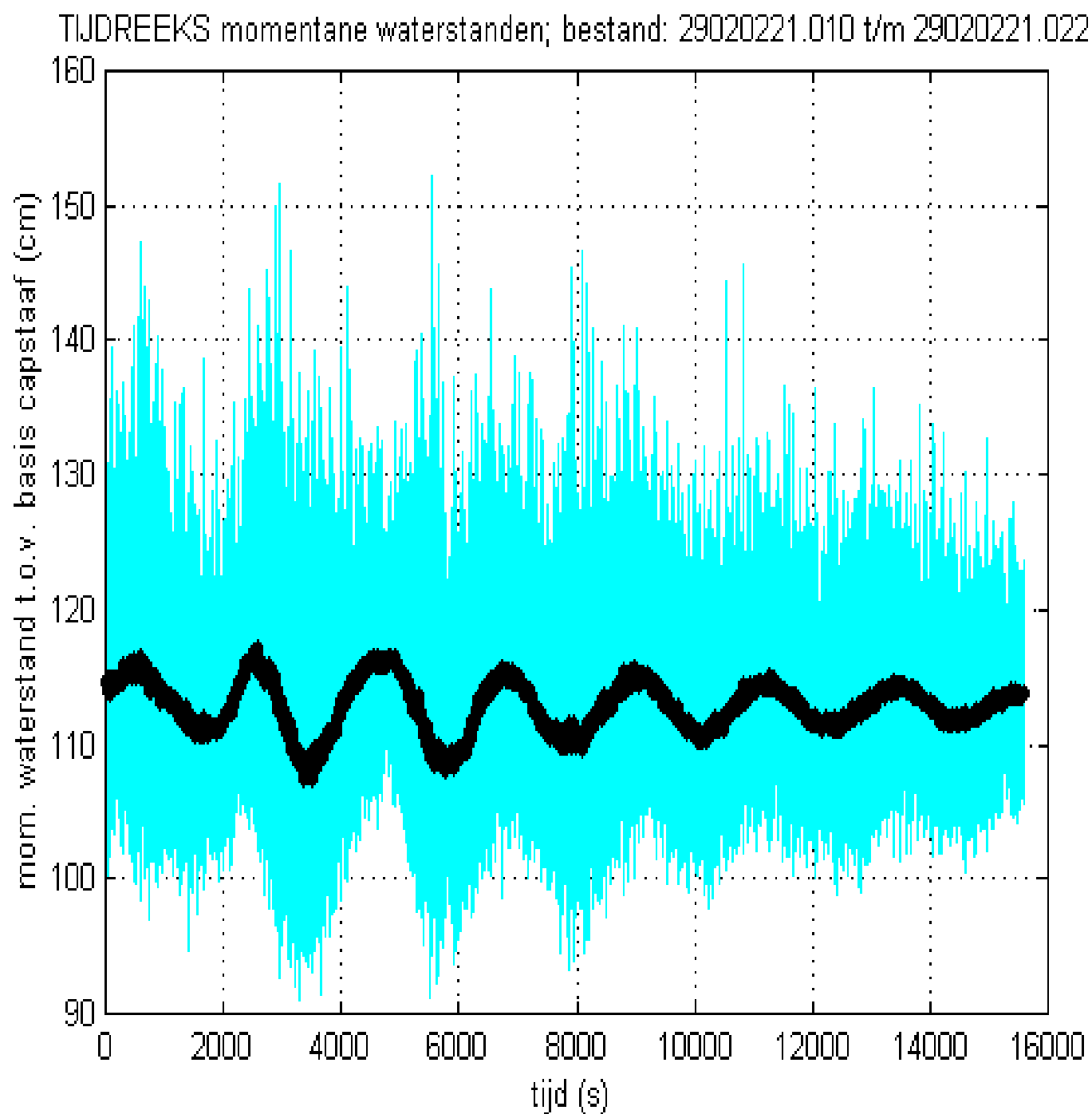
| | | |
|----------------------|---------------------|-----------------------|
| * $H_{max} = 2.06$ m | $T_{m-10} = 4.67$ s | o $T_{max} = 11.25$ s |
| $H_{1/50} = 1.82$ m | $T_{m01} = 3.72$ s | $T_p = 5.00$ s |
| $H_{1/10} = 1.61$ m | $T_{m02} = 3.32$ s | $T_{gem} = 4.14$ s |
| $H_{m0} = 1.33$ m | $T_{Hmax} = 5.00$ s | $SPGH = 0.41$ m |
| $H_{1/3} = 1.35$ m | $T_{H1/3} = 4.88$ s | $SPGT = 1.50$ s |
| $H_{gem} = 0.89$ m | $T_{1/3} = 5.70$ s | number = 288 |



.....
Figuur E.20 Histogram momentane waterstand
FL9, 26/02/2002; 12h-16h20 MET



.....
Figuur E.21 Tijdsverloop momentane waterst. (—) + 15-sec. gem. (—) SL29; 3h-7h20
MET.



.....
Figuur E.22 Tijdsverloop momentane waterst. (—) + 15-sec. gem. (—) FL25; 11h20-17h20 MET.

