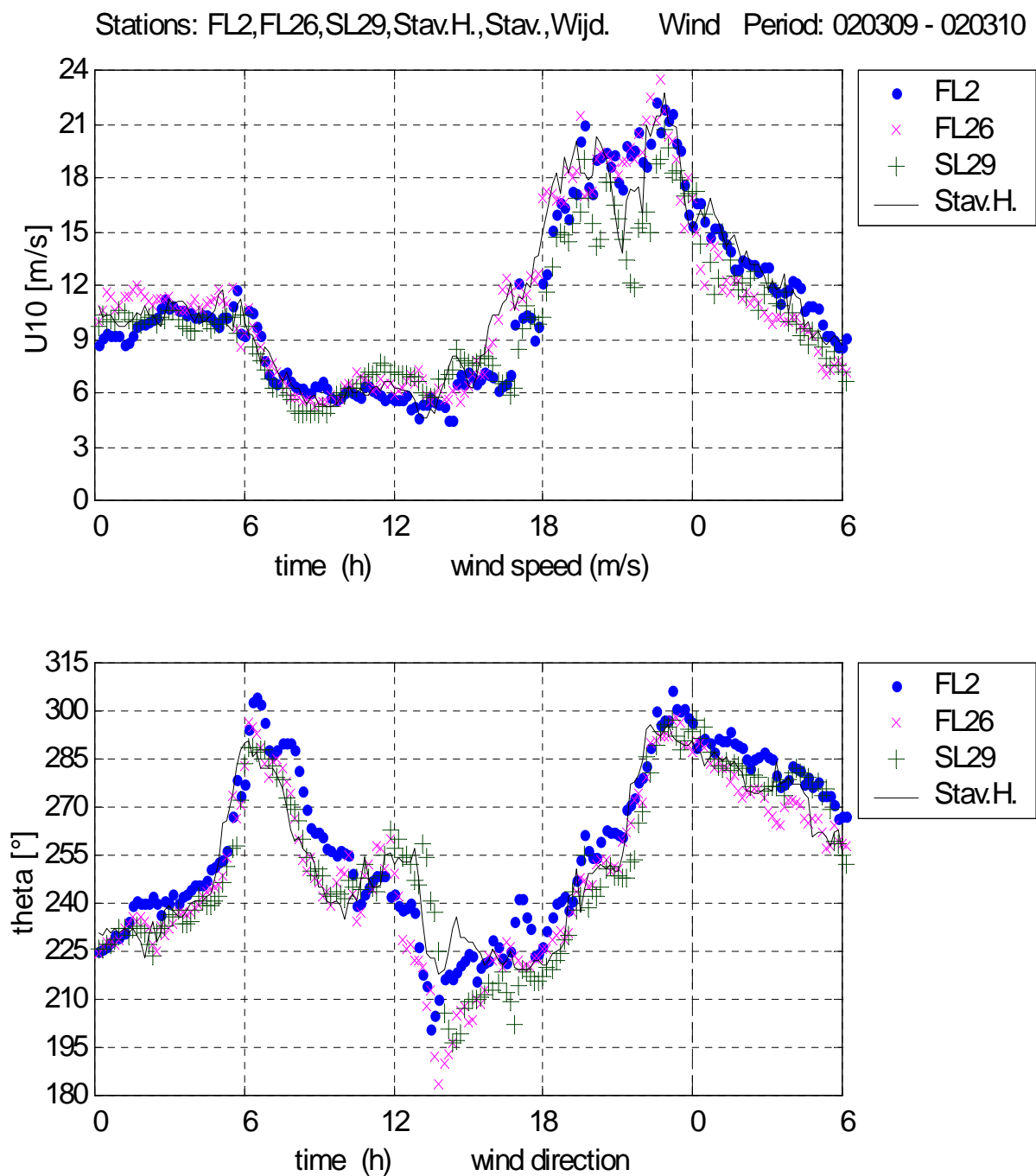


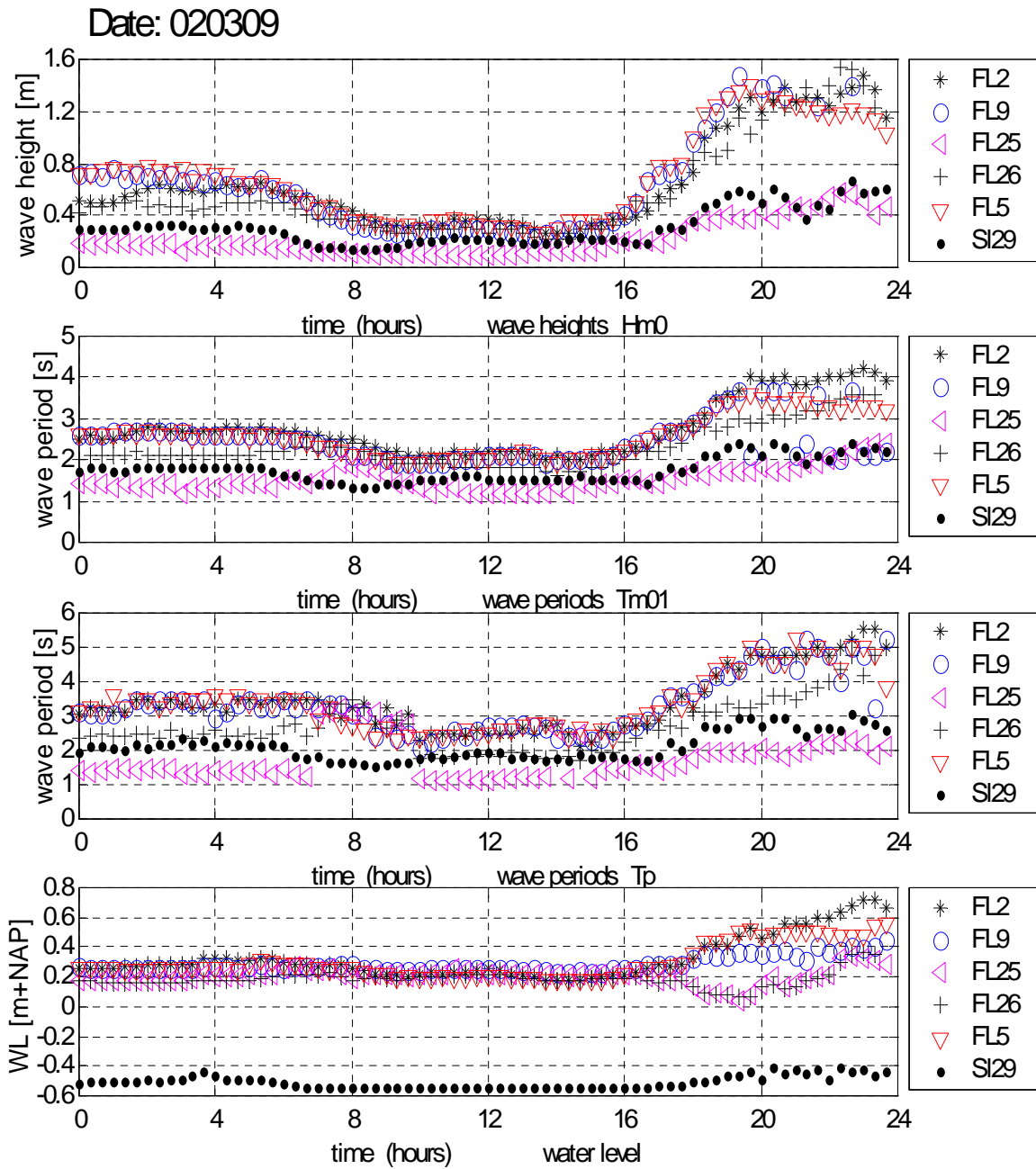
Lijst met figuren

Figuur F.1 Wind FL2, FL26, SL29, en Stav.-Haven, 9 en 10 maart 2002	F1
Figuur F.2 Golfhoogte, golfperiode en waterstand; alle stations; 9/3/2002	F2
Figuur F.3 Golfspectra 9/3/2002; gemiddelde 22h20-23h40 MET; alle stations	F3
Figuur F.4 Wind en golven FL2, 9-10 maart 2002	F4
Figuur F.5 Golven FL2 en golfploop Rott. Hoek, 9/3/2002	F5
Figuur F.6 Golfploop: 20-min. blok Rott. Hoek; 9/3/2002, v.a. 22h20 MET	F6
Figuur F.7 Golven: 20-min. blok FL2; 9/3/2002, v.a. 23h MET	F7
Figuur F.8 Histogram momentane waterstand FL2, 9/3/2002; 20-24h MET	F8
Figuur F.9 Wind FL2, FL26, SL29, en Wijdenes, 14 en 15 maart 2002	F9
Figuur F.10 Golfhoogte, golfperiode en waterstand; alle stations; 14/3/2002	F10
Figuur F.11 Golfspectra 14/3/2002; gemiddelde 21h-23h MET; alle stations	F11
Figuur F.12 Wind FL26 en golven FL25, 14-15 maart 2002)	F12
Figuur F.13 Golven: 20-min. blok FL25; 14/3/2002, v.a. 22h20 MET)	F13

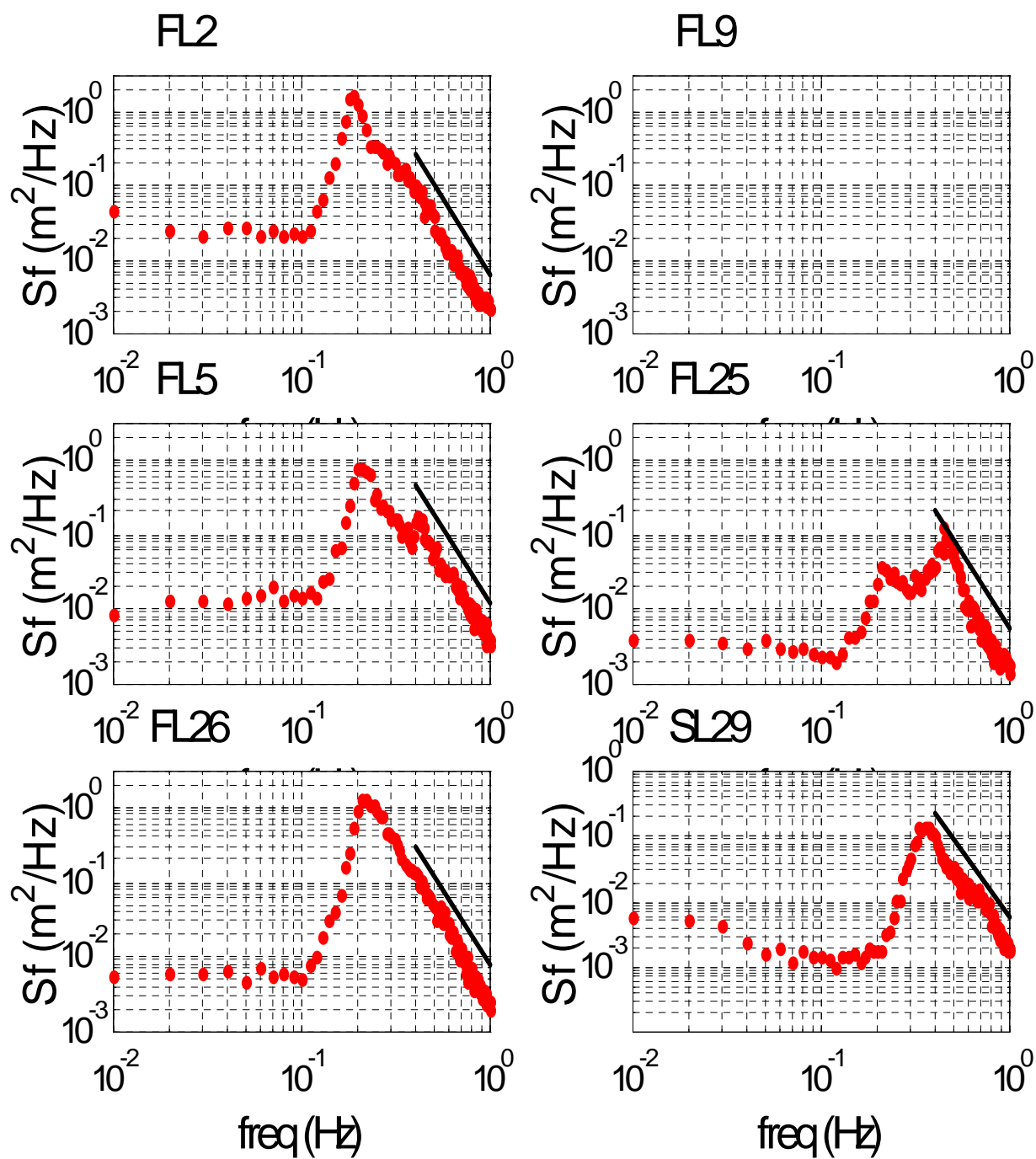
.....
 Figuur F.1 Wind FL2, FL26, SL29, en Stav.-
 Haven, 9 en 10 maart 2002



Figuur F.2 Golfhoogte, golfperiode en
waterstand; alle stations; 9/3/2002

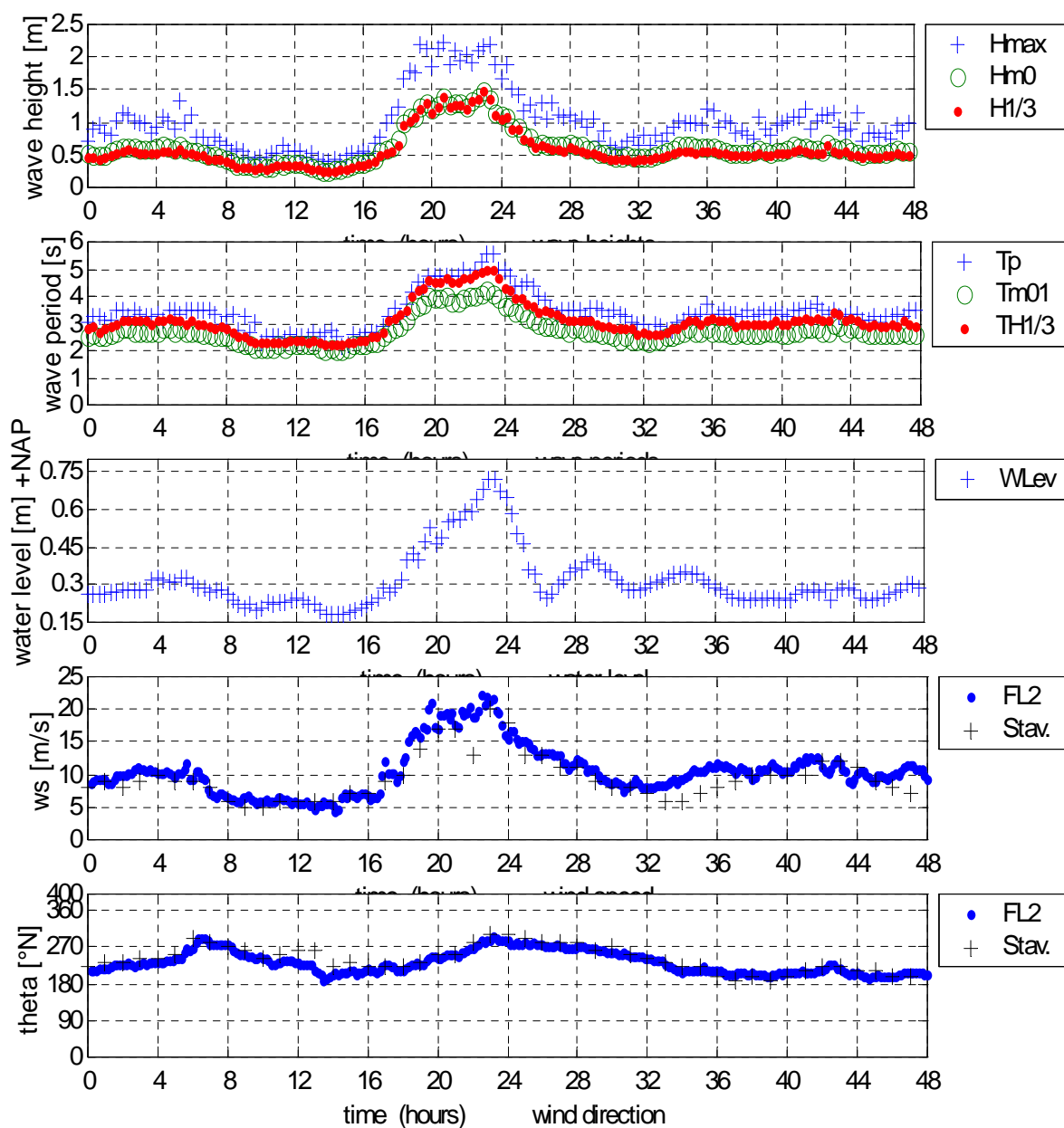


Figuur F.3 Golfspectra 9/3/2002; gemiddelde
22h20-23h40 MET; alle stations

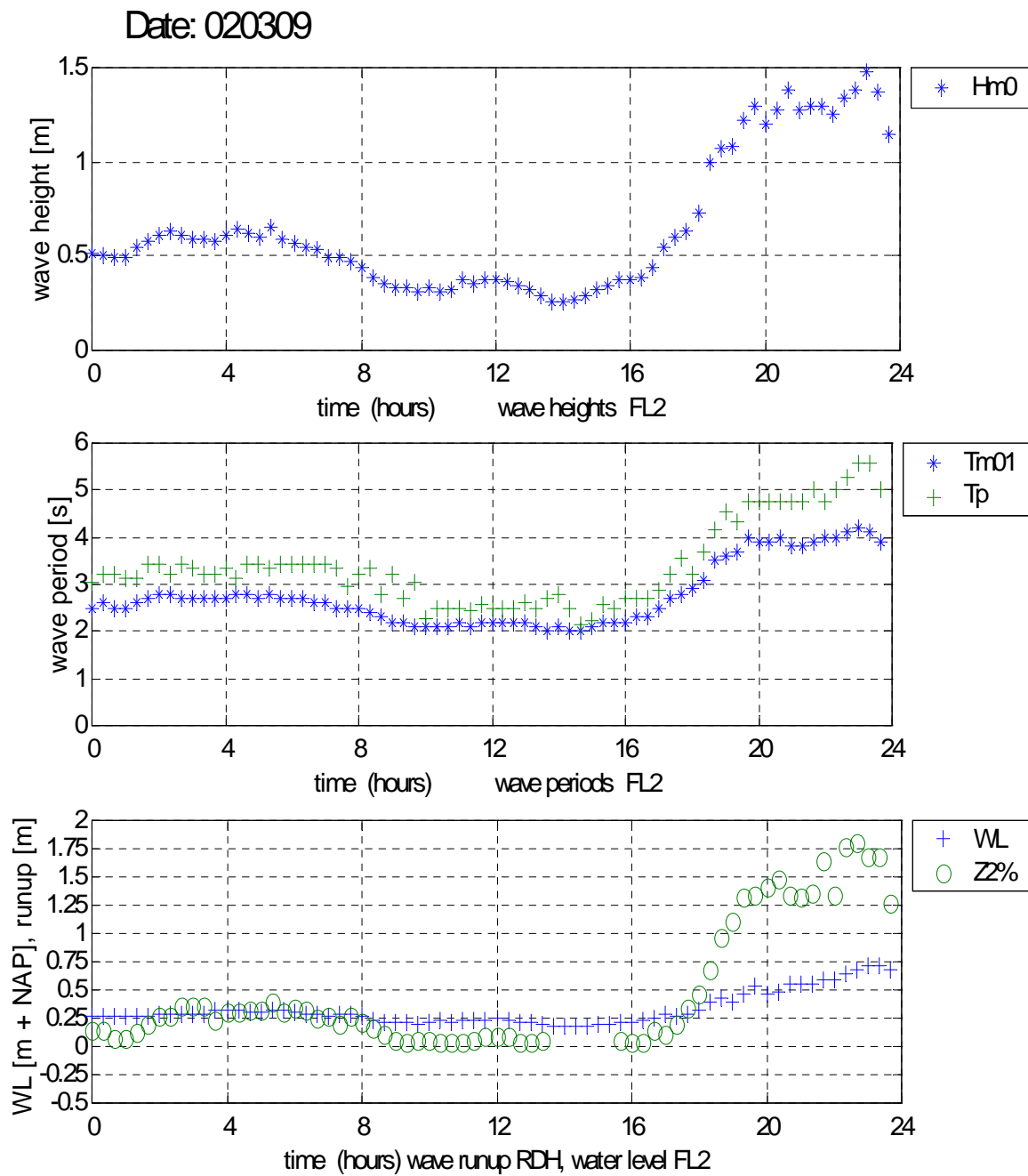


Figuur F.4 Wind en golven FL2, 9-10 maart 2002

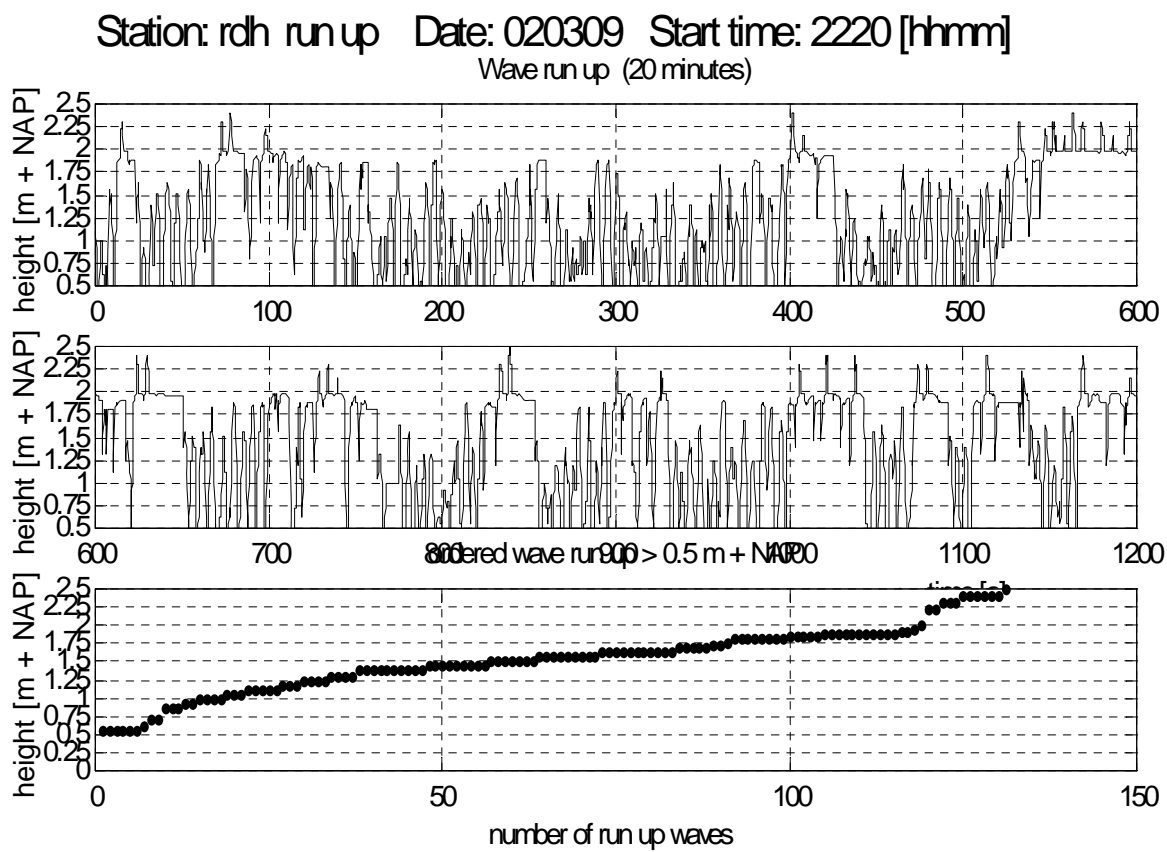
Station: FL2 capa Start Date: 020309 ; 2 meas. day(s)



.....
 Figuur F.5 Golven FL2 en golfoploop Rott. Hoek,
 9/3/2002



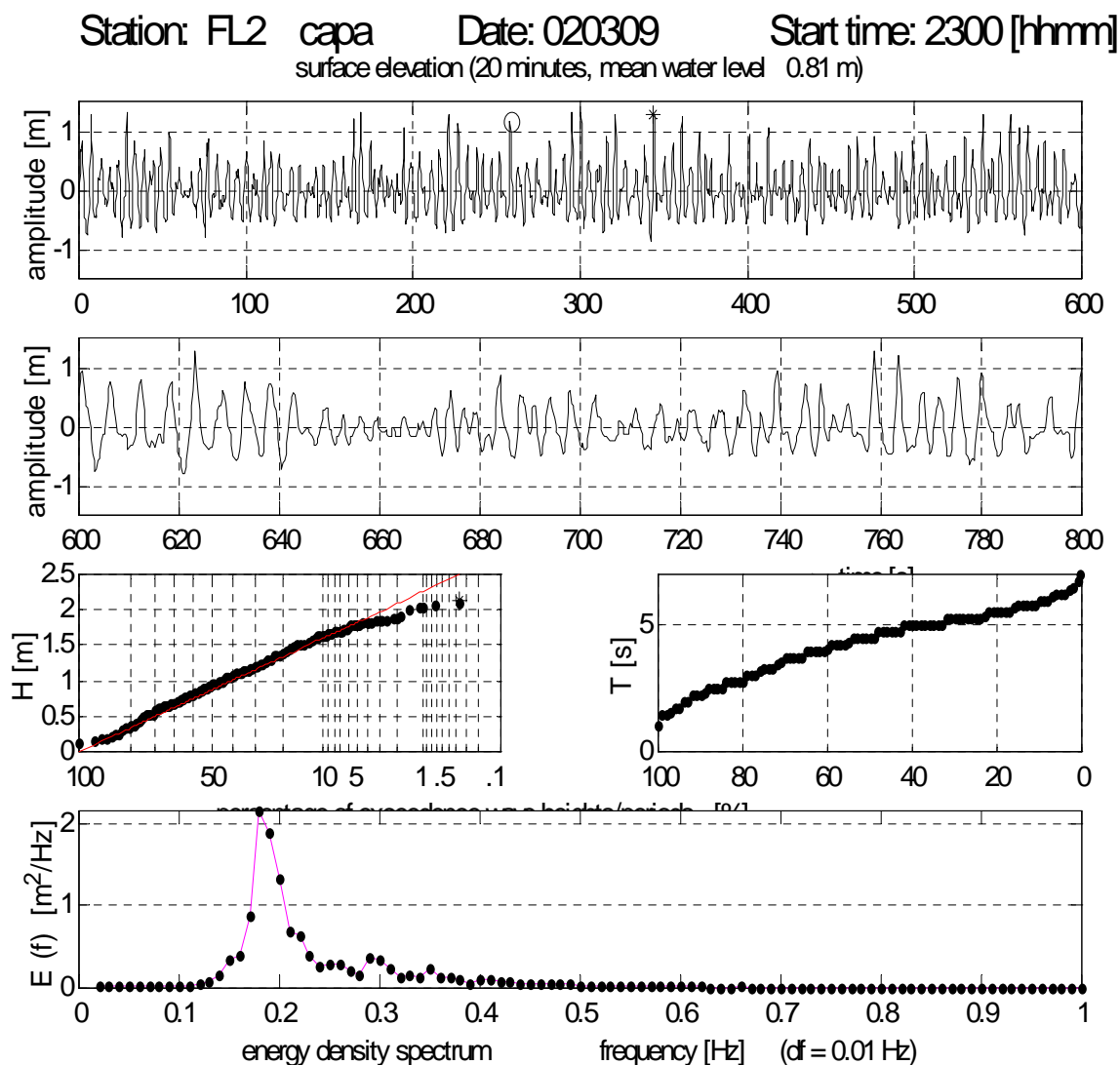
Figuur F.6 Golfoploop: 20-min. blok Rott. Hoek;
9/3/2002, v.a. 22h20 MET



hmax = 2.49 m + NAP
h1perc = 2.40 m + NAP
h2perc = 2.40 m + NAP
h5perc = 1.92 m + NAP
h10perc = 1.86 m + NAP
number = 131

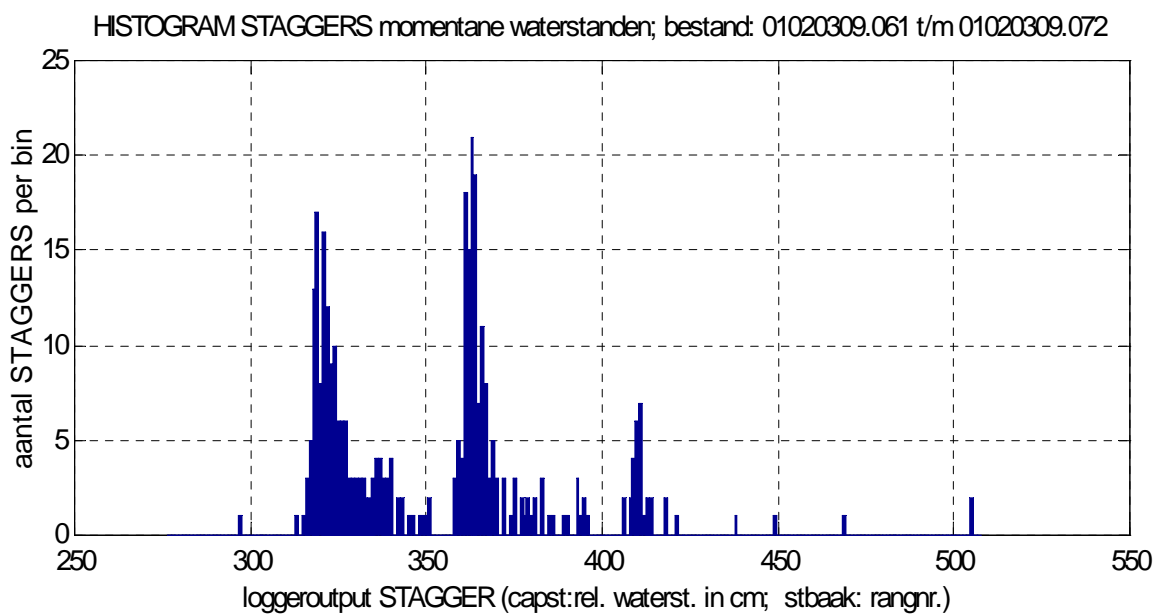
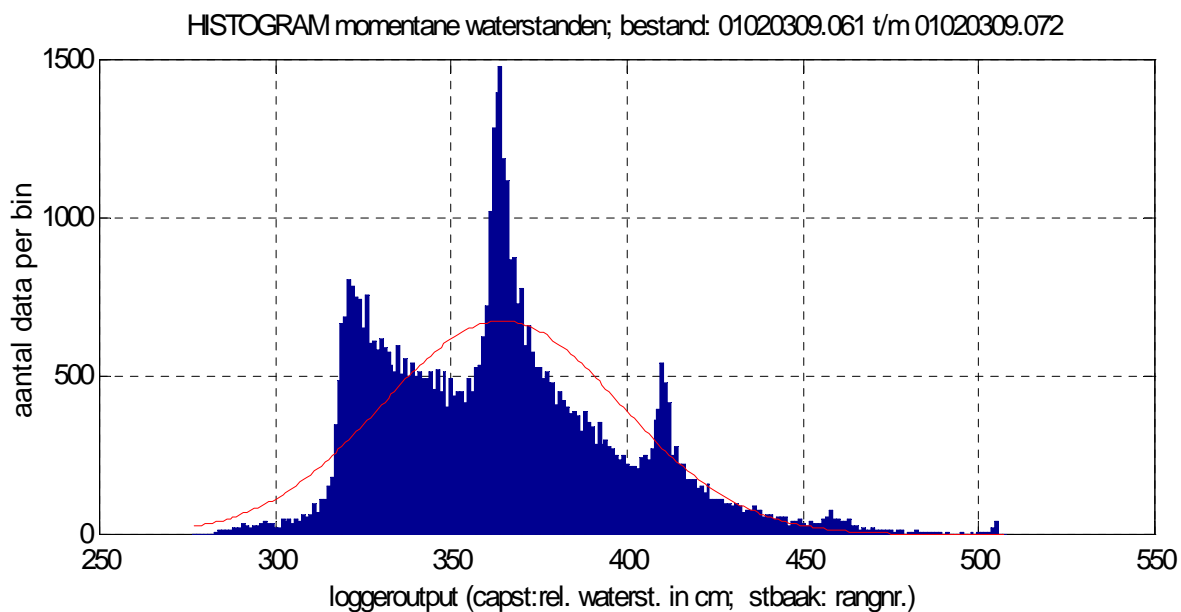
waterlevel = 0.64 m + NAP
Hm0 = 1.34 m
Tp = 5.00 s
number waves = 293
Z2perc = 1.76 m

Figuur F.7 Golven: 20-min. blok FL2; 9/3/2002,
v.a. 23h MET

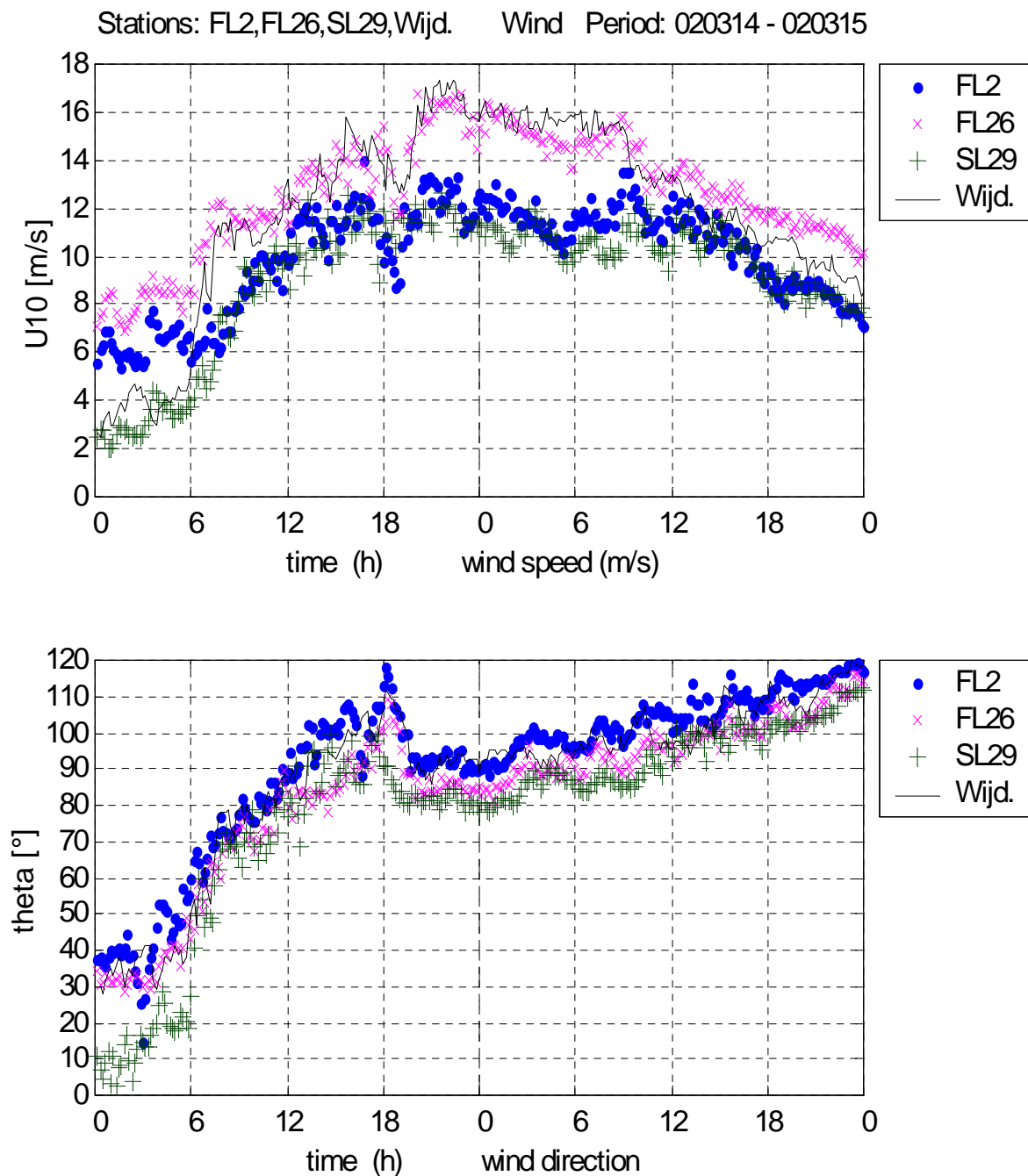


* $H_{max} = 2.15$ m	$T_{m-10} = 4.84$ s	o $T_{max} = 7.00$ s
$H_{1/50} = 2.05$ m	$T_{m01} = 4.17$ s	$T_p = 5.56$ s
$H_{1/10} = 1.82$ m	$T_{m02} = 3.80$ s	$T_{gem} = 4.30$ s
$H_{m0} = 1.48$ m	$T_{Hmax} = 4.25$ s	$SPGH = 0.47$ m
$H_{1/3} = 1.49$ m	$T_{H1/3} = 5.01$ s	$SPGT = 1.37$ s
$H_{gem} = 0.96$ m	$T_{1/3} = 5.71$ s	number = 277

.....
 Figuur F.8 Histogram momentane waterstand
 FL2, 9/3/2002; 20-24h MET

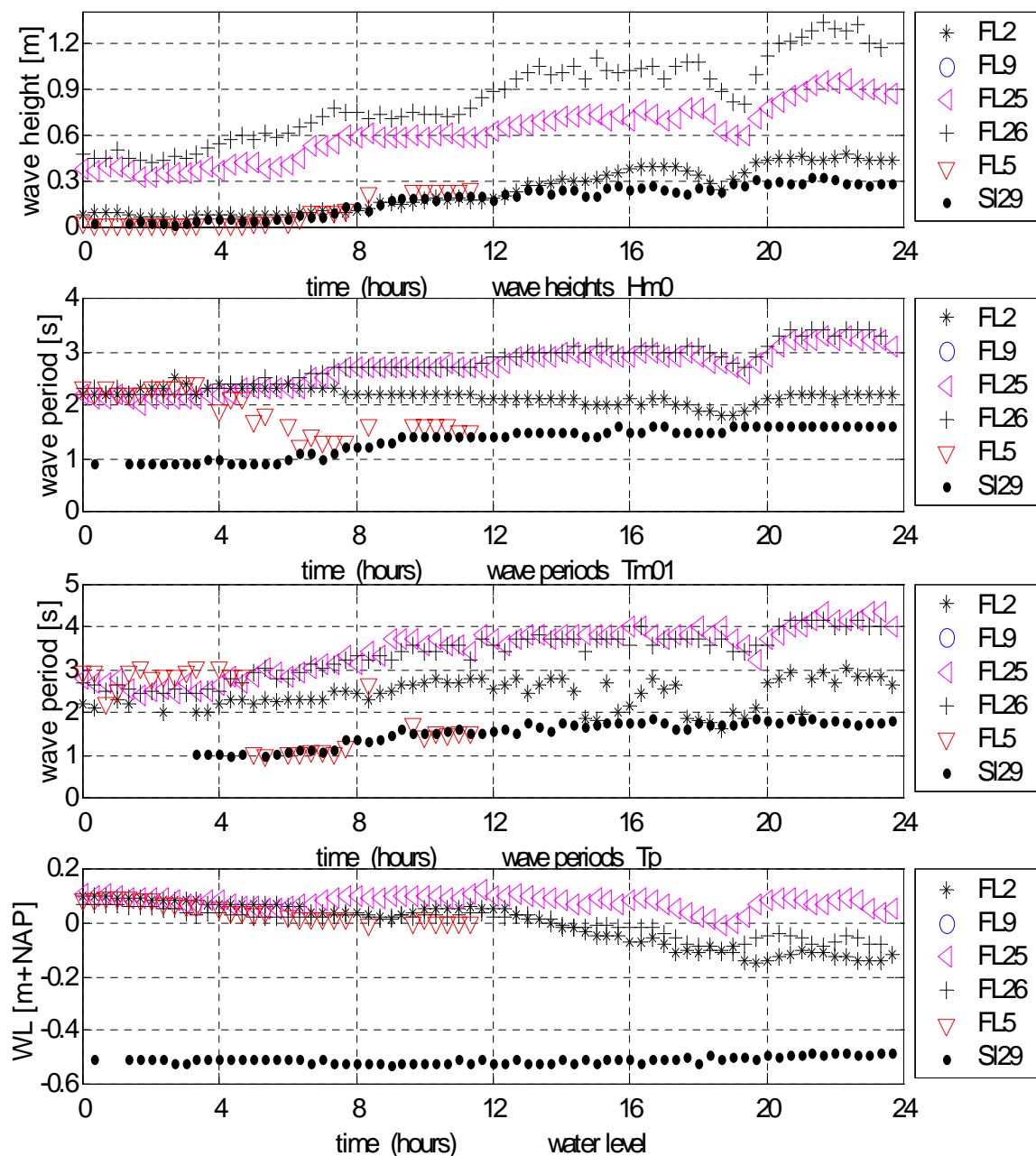


.....
 Figuur F. 9 Wind FL2, FL26, SL29, en Wijdenes,
 14-15 maart 2002

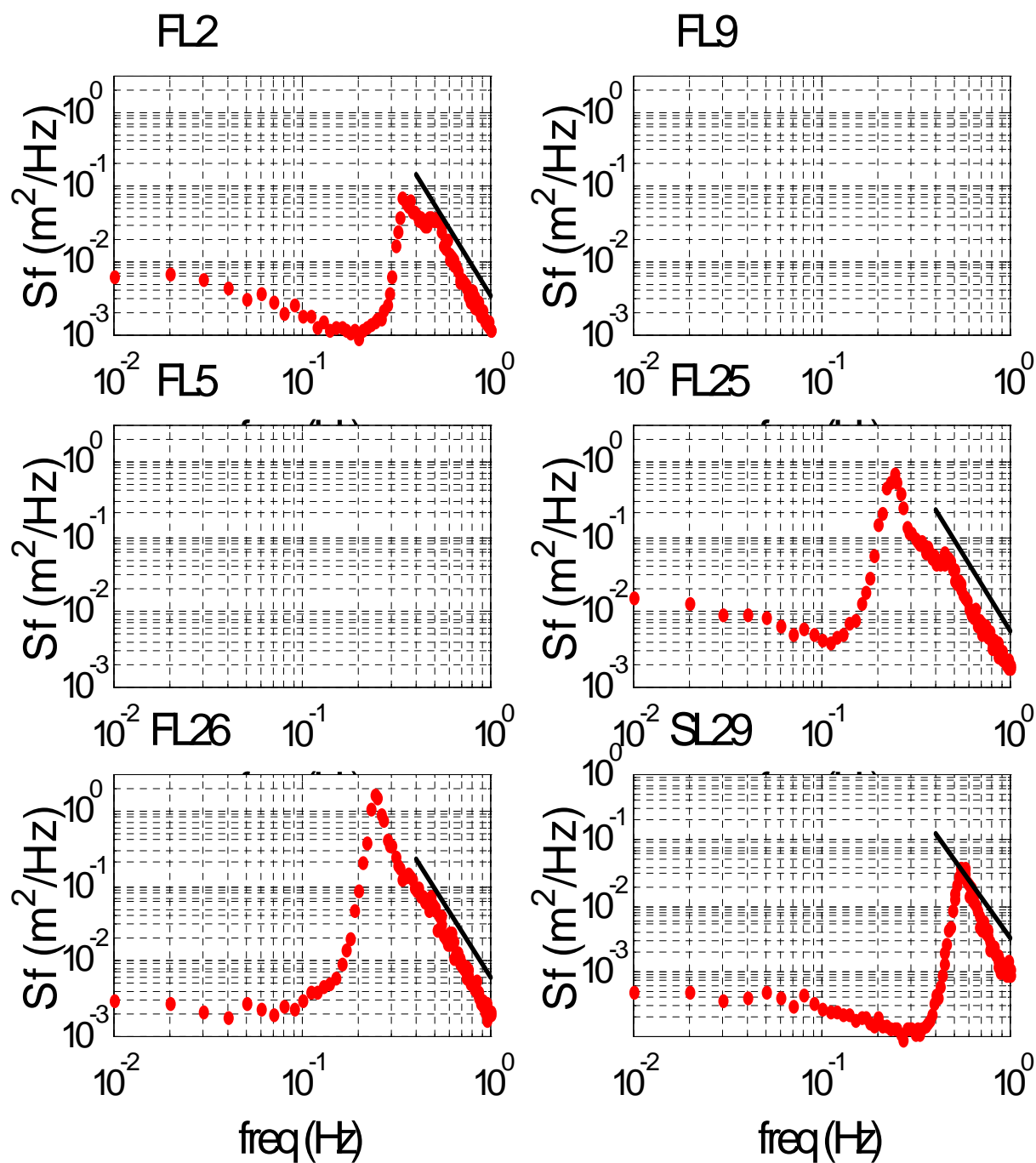


Figuur F.10 Golfhoogte, golfperiode en
waterstand; alle stations; 14/3/2002

Date: 020314

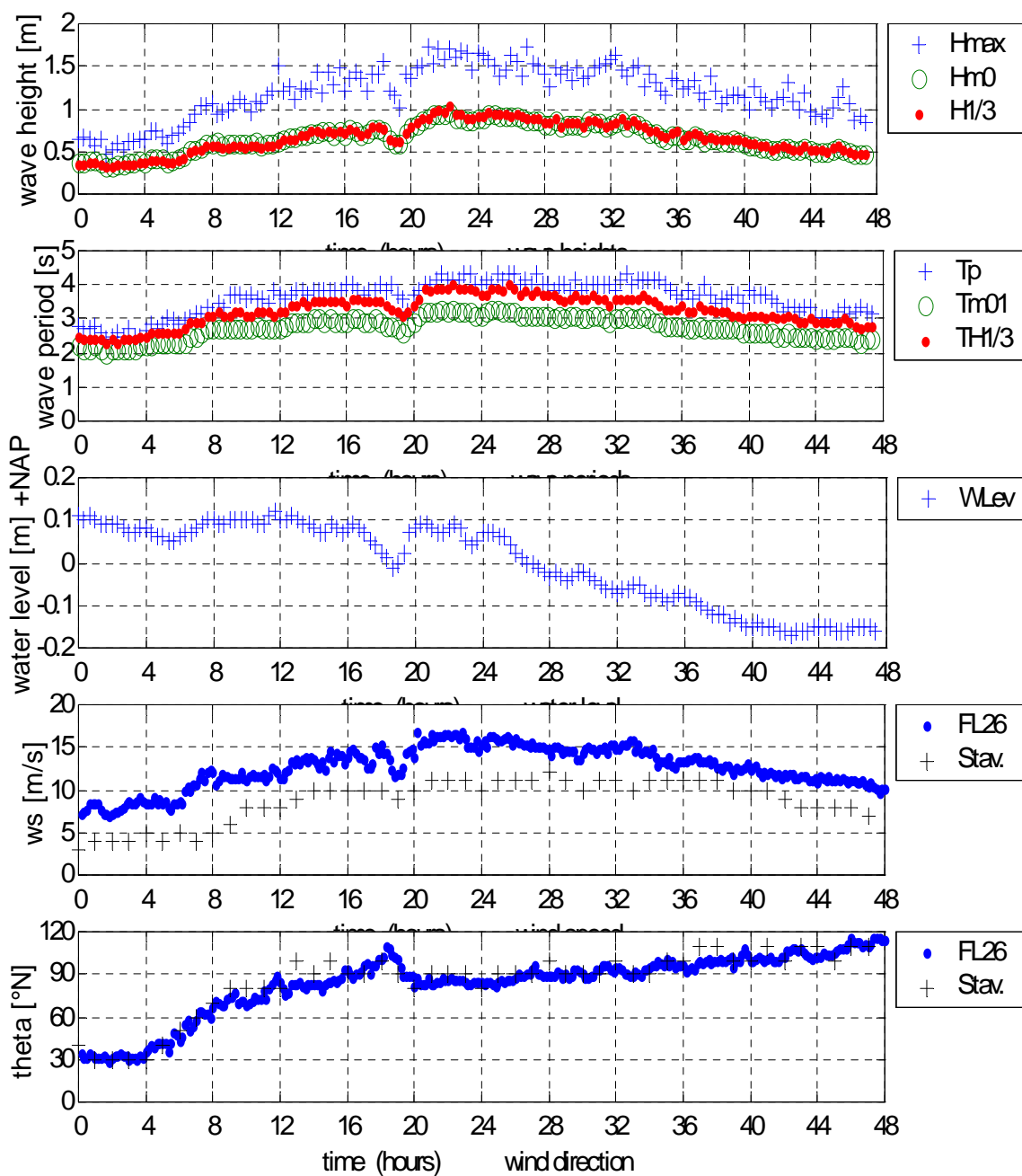


.....
 Figuur F.11 Golfspectra 14/3/2002; gemiddelde
 21h-23h MET; alle stations



Figuur F.12 Wind FL26 en golven FL25, 14-15
maart 2002

Station: FL25 capa Start Date: 020314 ; 2 meas. day(s)



Figuur F.13 Golven: 20-min. blok FL25;
14/3/2002, v.a. 22h20 MET

