

---

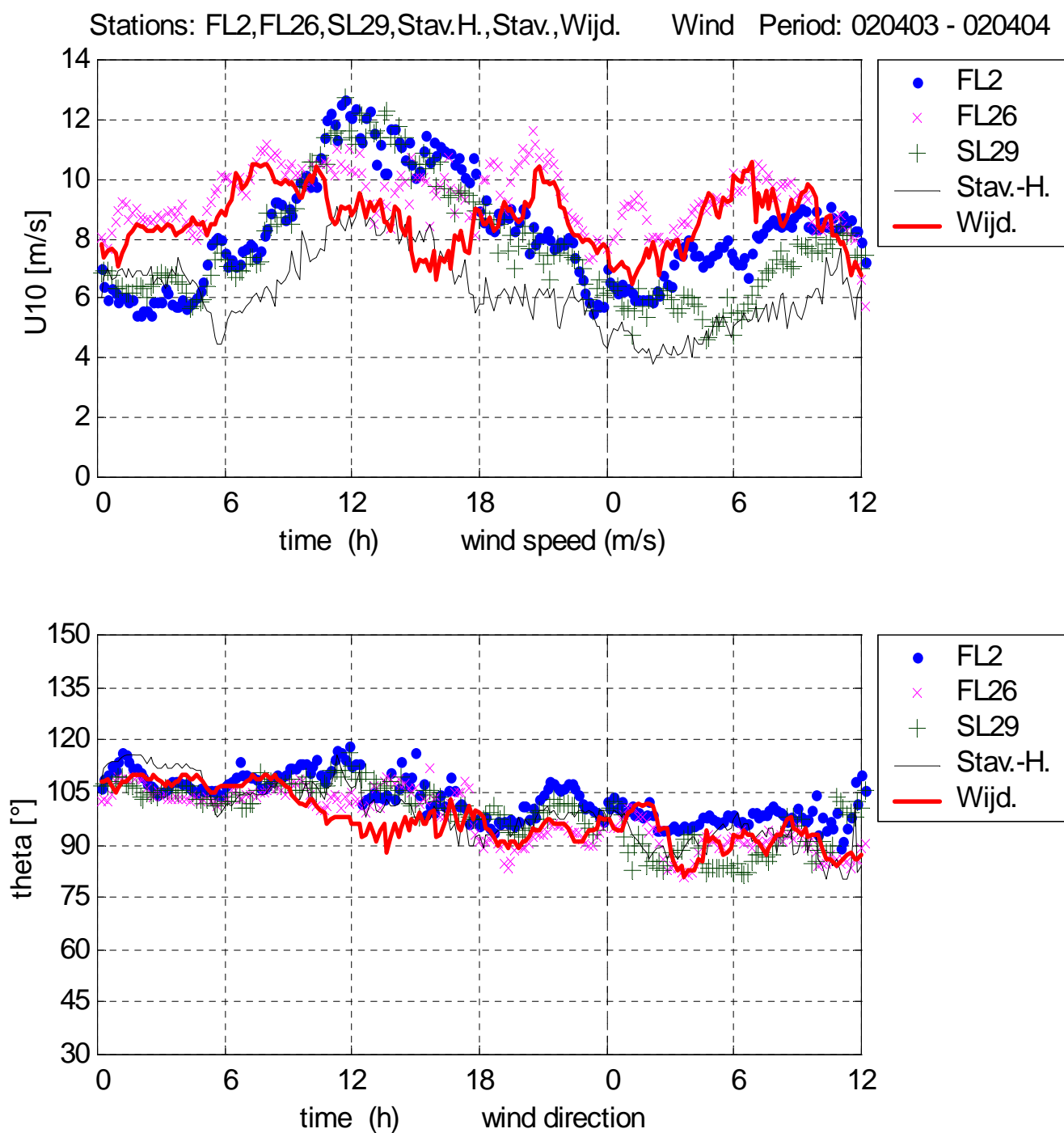
## Bijlage G Overige grafieken stormseizoen 2001-2002

---

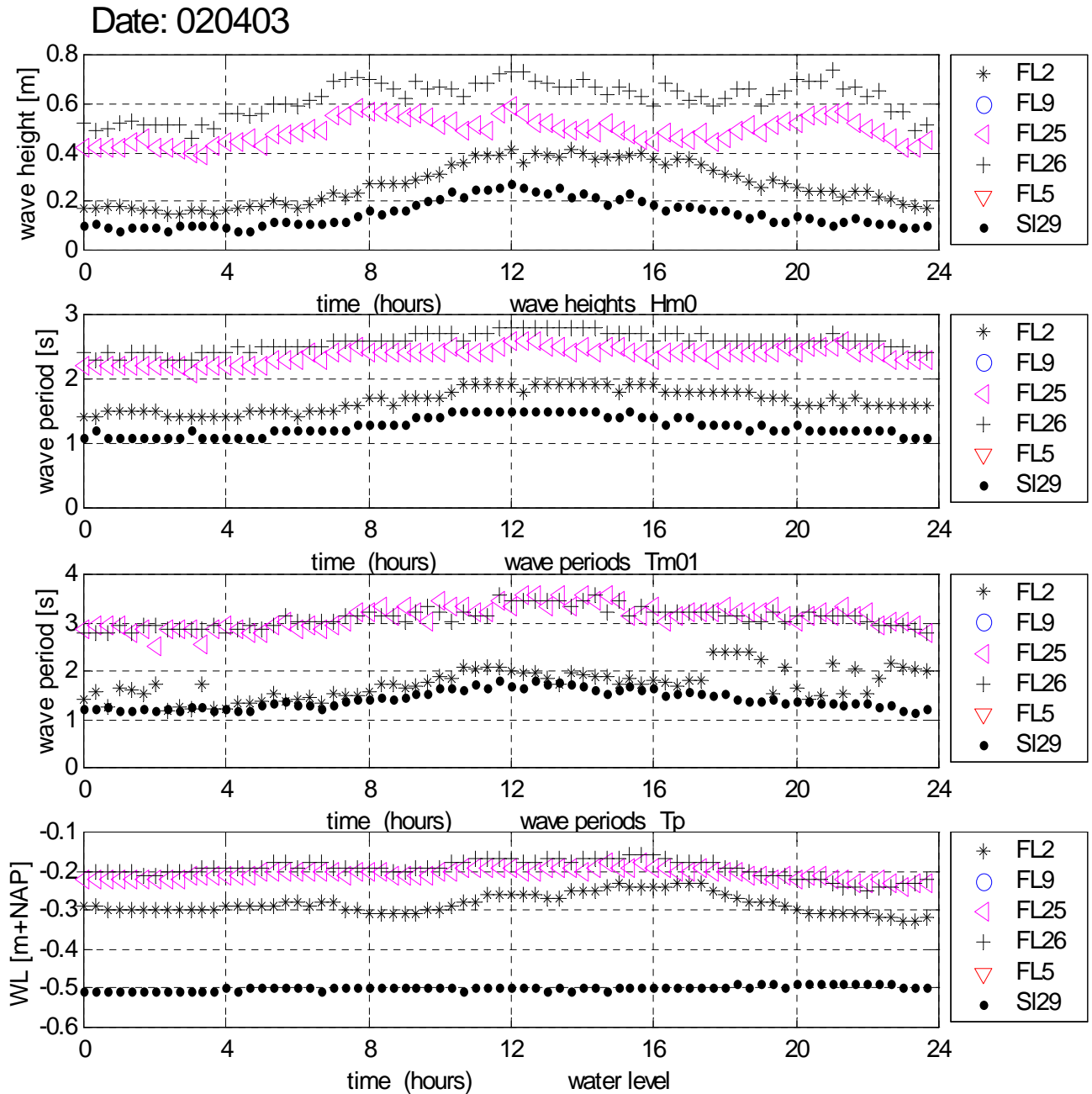
### Lijst met figuren

Figuur G.1 Wind FL2 , FL26, SL29, Stav.-Haven en Wijdenes, 3-4 apr. 2002	G1
Figuur G.2 Golfhoogte, golfperiode en waterstand; alle stations; 3 april 2002	G2
Figuur G.3 Wind en golven FL26, 16-17 juli 2001	G3
Figuur G.4 Golven: 20-min. blok FL26; 17/7/ 2001, v.a. 11h40 MET (voor schoonmaak)	G4
Figuur G.5 Momentane waterstand en 15-sec. gem.; SL29; 27/11/2001; 11h-13h20 MET	G5
Figuur G.6 Momentane waterstand en 15-sec. gem.; FL25; 27/11/2001; 10h20-12h40 MET	G6
Figuur G.7 Momentane waterstand en 15-sec. gem.; FL26; 18/12/2001; 11h40-15h40 MET	G7

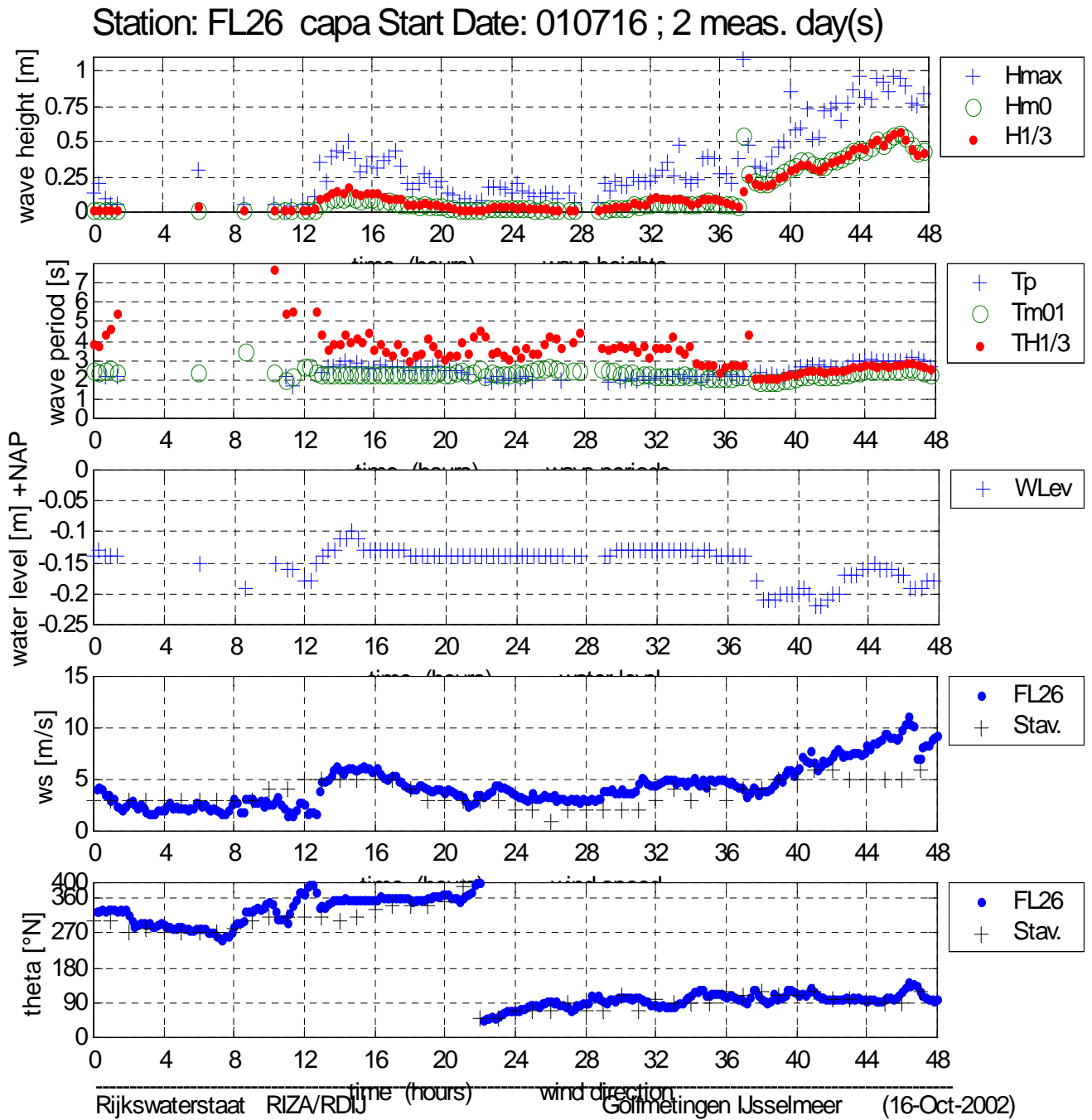
.....  
 Figuur G.1 Wind FL2 , FL26, SL29, Stav.-  
 Haven en Wijdenes, 3-4 apr. 2002



Figuur G.2 Golfhoogte, golfperiode en  
waterstand; alle stations; 3 april  
2002

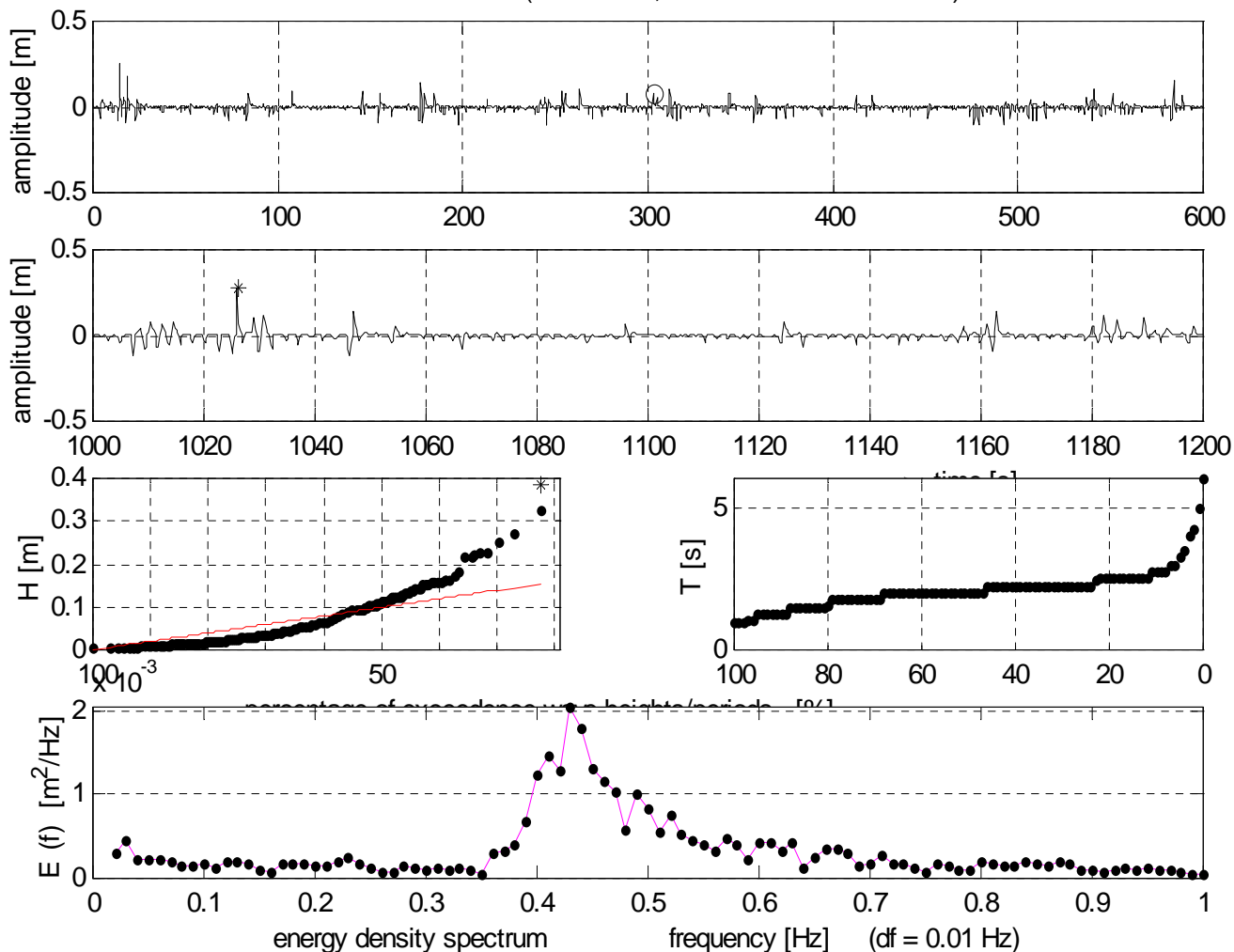


Figuur G.3 Wind en golven FL26, 16-17 juli 2001



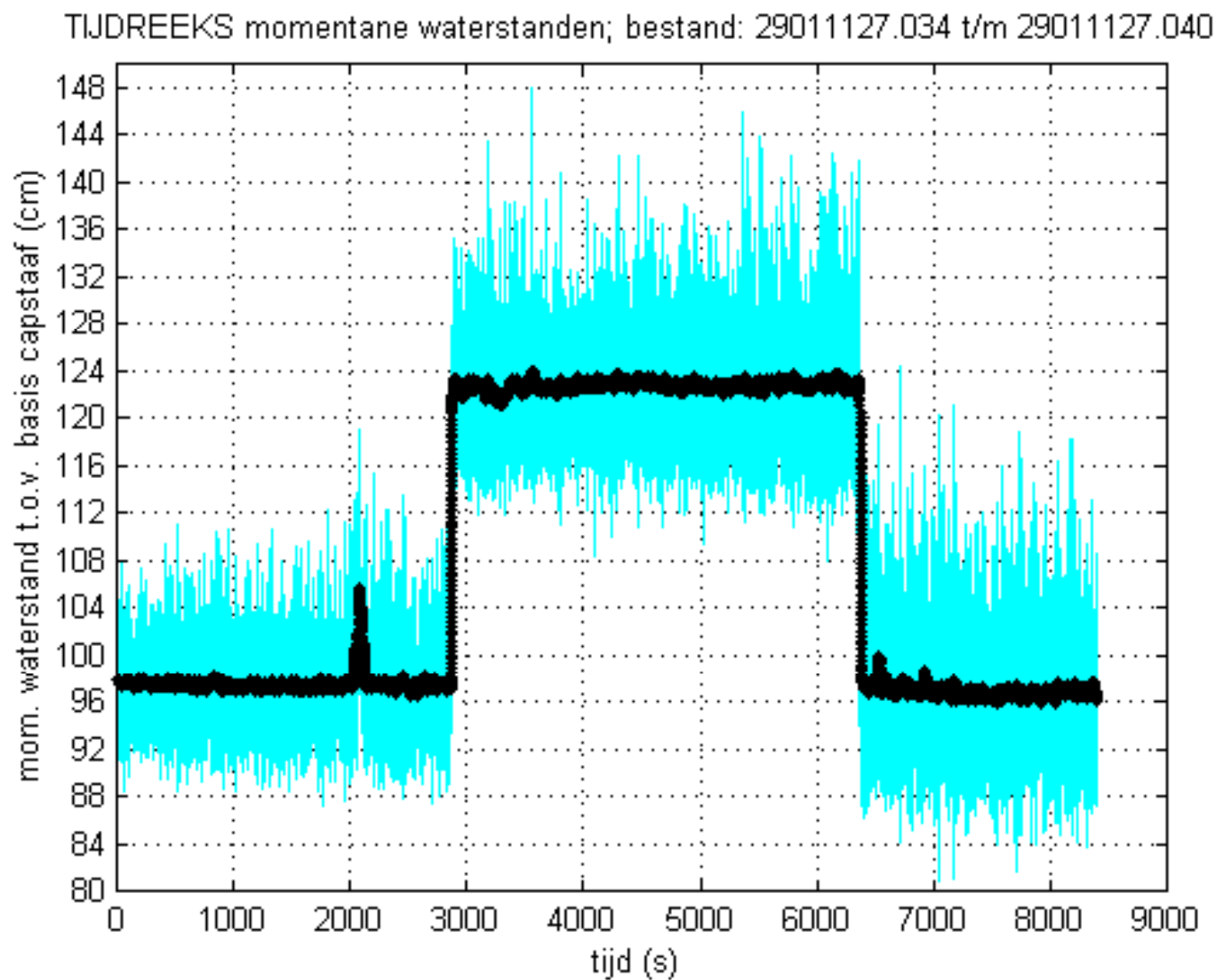
Figuur G.4 Golven: 20-min. blok FL26; 17/7/  
2001, v.a. 11h40 MET (voor  
schoonmaak)

Station: FL26 capa Date: 010717 Start time: 1140 [hhmm]  
surface elevation (20 minutes, mean water level -0.14 m)

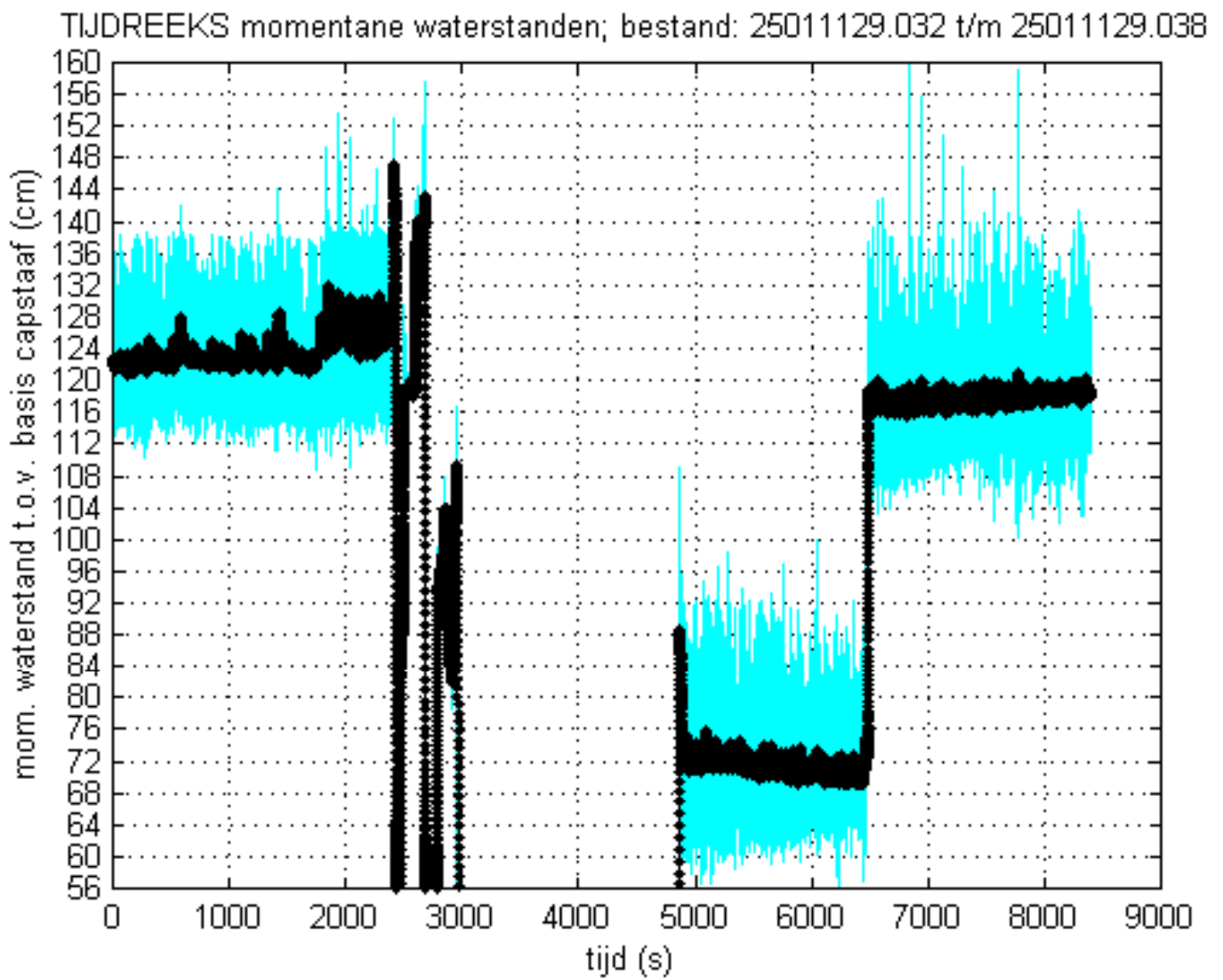


* $H_{max} = 0.38$ m	$T_{m-10} = 3.15$ s	o $T_{max} = 6.00$ s
$H_{1/50} = 0.24$ m	$T_{m01} = 2.08$ s	$T_p = 2.33$ s
$H_{1/10} = 0.15$ m	$T_{m02} = 1.93$ s	$T_{gem} = 2.12$ s
$H_{m0} = 0.07$ m	$TH_{max} = 2.25$ s	$SPGH = 0.04$ m
$H_{1/3} = 0.09$ m	$TH_{1/3} = 2.44$ s	$SPGT = 0.71$ s
$H_{gem} = 0.04$ m	$T_{1/3} = 2.77$ s	number = 562

.....  
 Figuur G.5 Momentane waterstand (—) en  
 15-sec. gem. (—); SL29;  
 27/11/2001; 11h-13h20 MET.



.....  
 Figuur G.6 Momentane waterstand (—) en  
 15-sec. gem. (—); FL25;  
 27/11/2001; 10h20-12h40 MET.



Figuur G.7 Momenteane waterstand (■) en  
15-sec. gem. (—); FL26;  
18/12/2001; 11h40-15h40 MET.

