

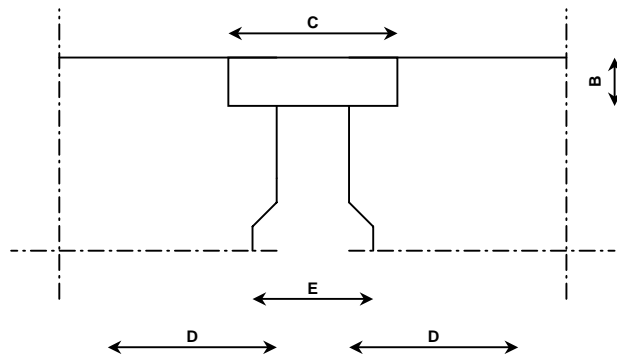
# **OVERZICHT VOEGOVERGANGEN**

**PD3**  
**d.d. 27 mei 2004**

# INHOUD

FLEXIBELE MASSAVOEGEN	1
GEMODIFICEERDE VOEGEN	7
MATTENVOEGEN	10
RANDPROFIELVOEGEN	16
UITKRAGENDE VOEGEN	36

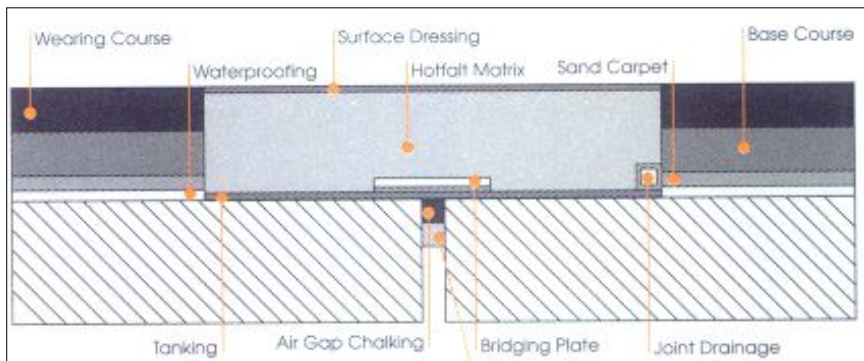
# FLEXIBELE MASSAVOEGEN



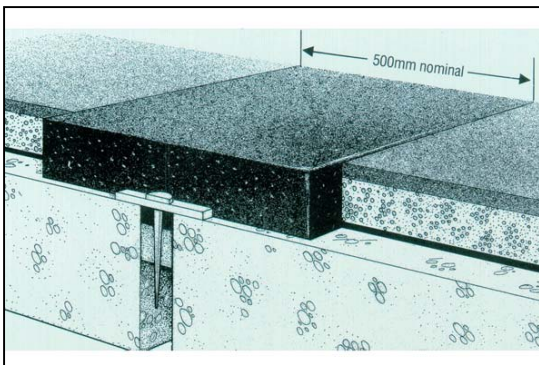
## Flexibele massavoegen

### ASL CONTRACTS

#### Hotfalt



#### Bitumineuze voeg



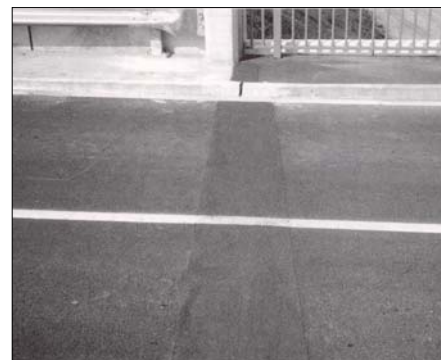
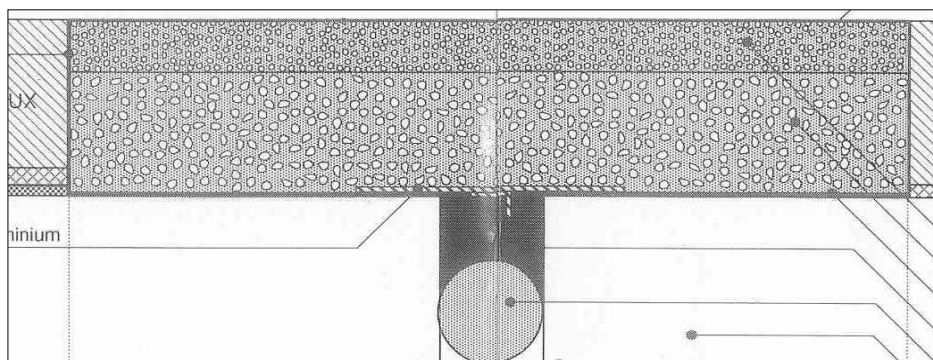
## Flexibele massavoegen

---

**BTPS**

**BETAFLEX S**

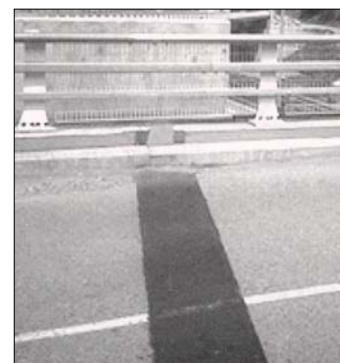
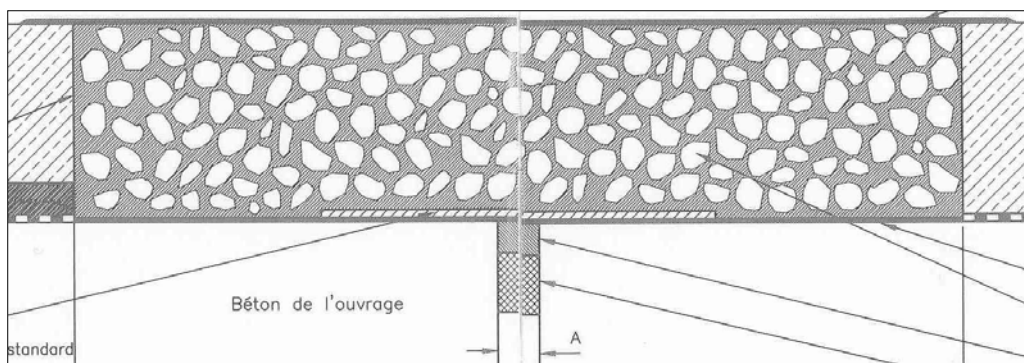
**Bitumineuze voeg**



**CIPEC**

**WS**

**Bitumineuze voeg**

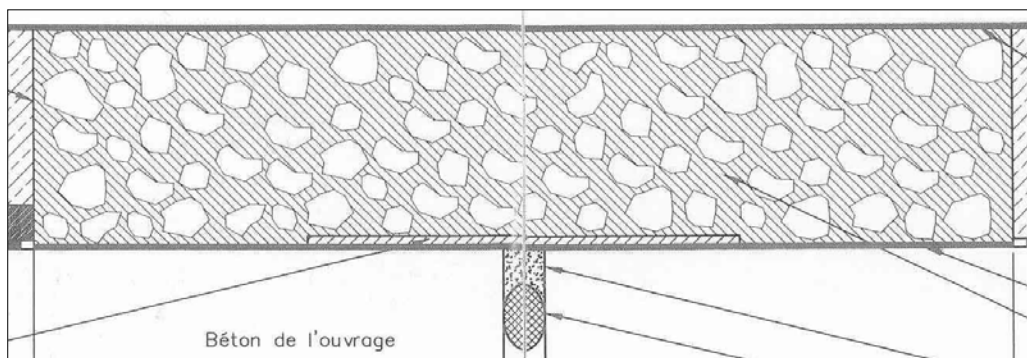


## Flexibele massavoegen

**Freyssinet**

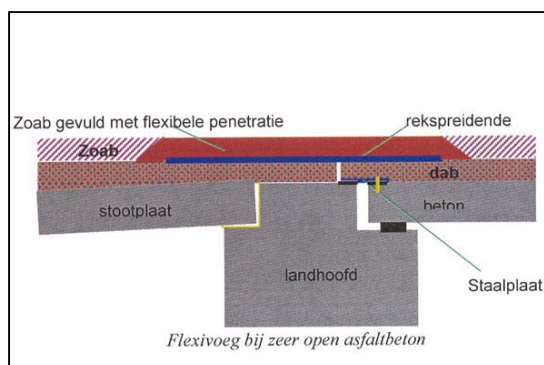
**Viajoint**

**Bitumineuze voeg**



**Heijmans**

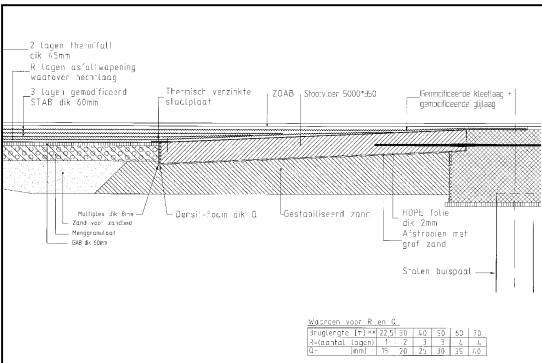
**Flexivoeg**



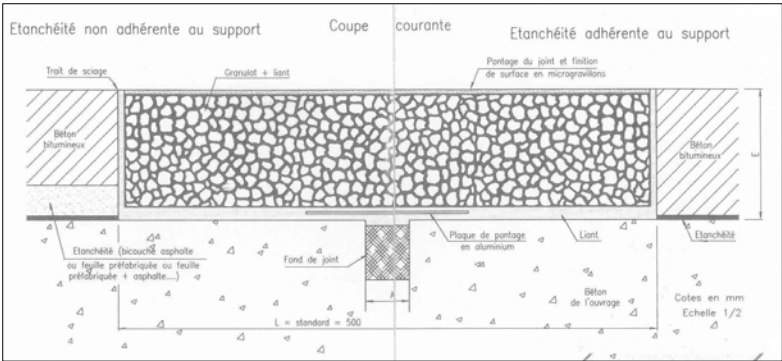


# Flexibele massavoegen

## Oomsvoeg

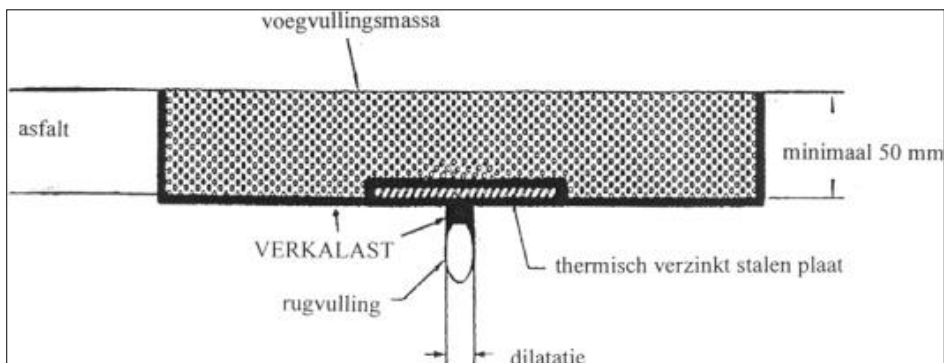


## RCA Polyjoint

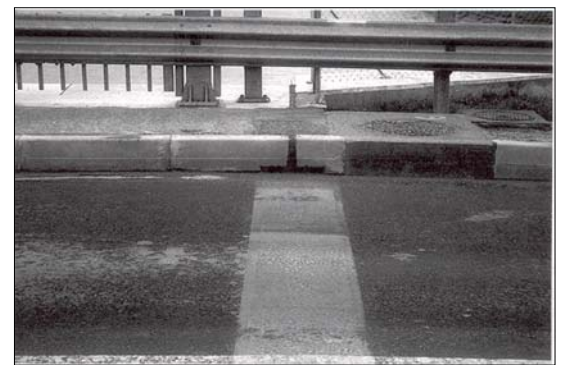
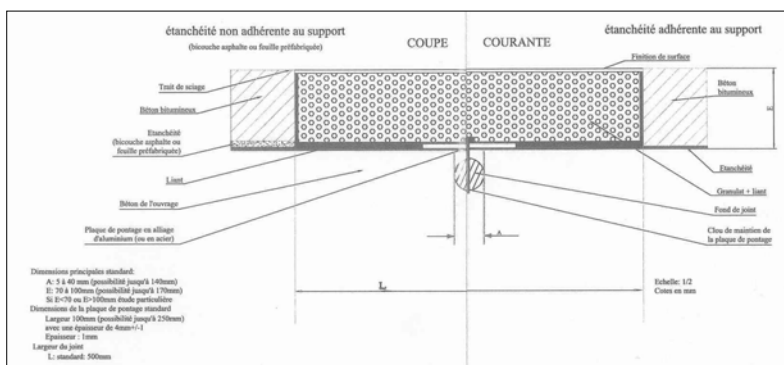


## Flexibele massavoegen

### Smits Neuchatel Multijoint

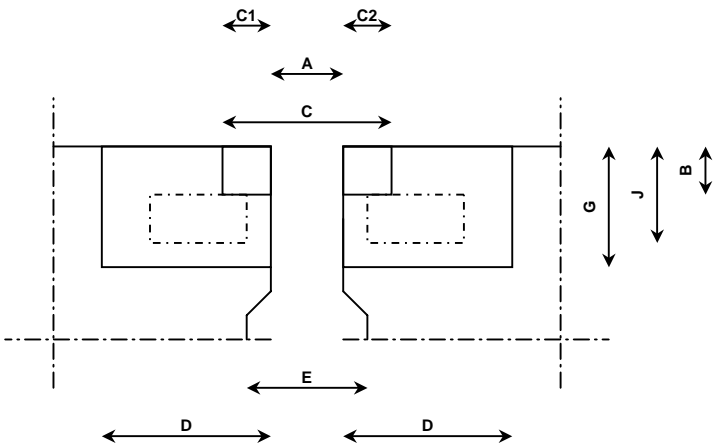


### Thormack Euro joint/Thormajoint



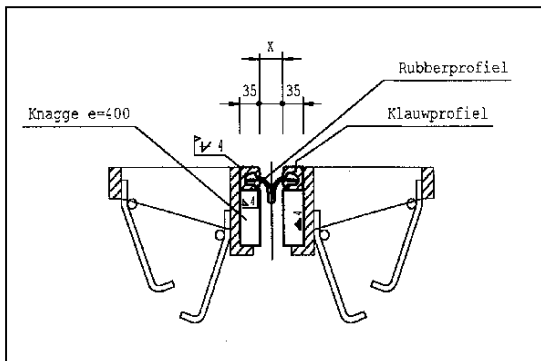


# GEMODIFICEERDE VOEGEN

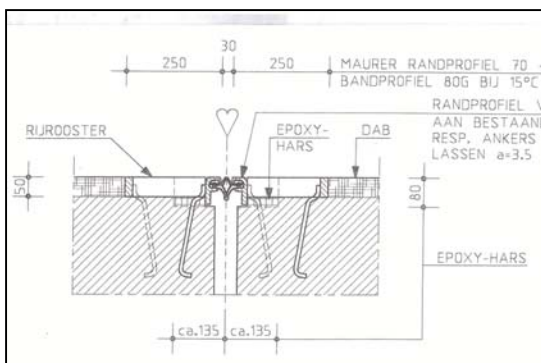


# Gemodificeerde voegen

## EGV-klauwvoeg

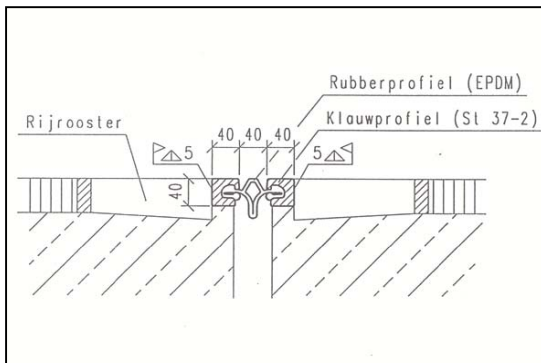


## EKV-klauwvoeg

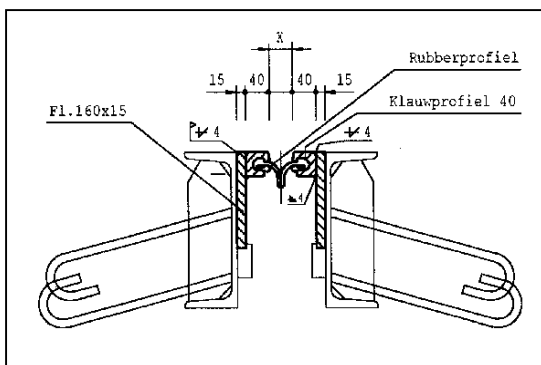


## Gemodificeerde voegen

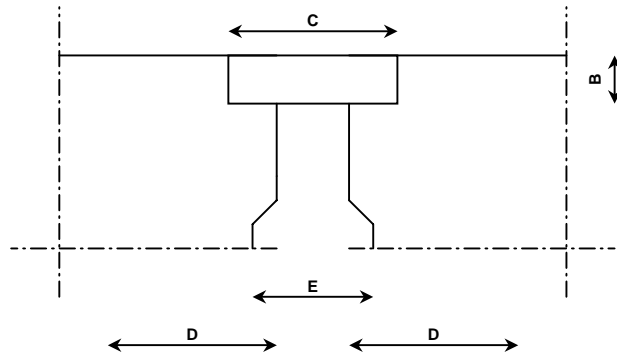
### Open voeg-Klauwvoeg



### RUB-Klauwvoeg



# MATTENVOEGEN



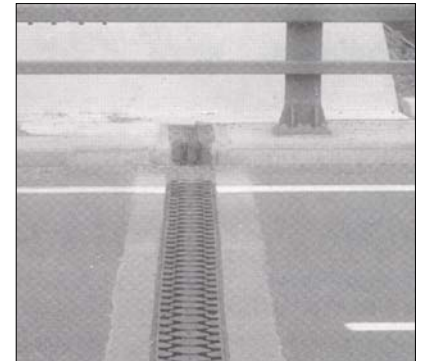
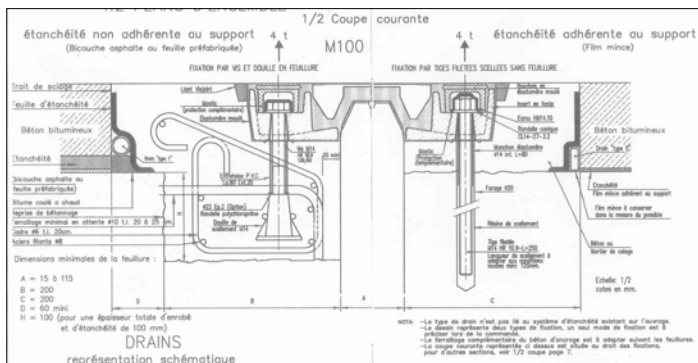
## Principes:

1. De dilataties worden opgenomen door verlenging en verkorting
2. De dilataties worden opgenomen door schuifvervorming

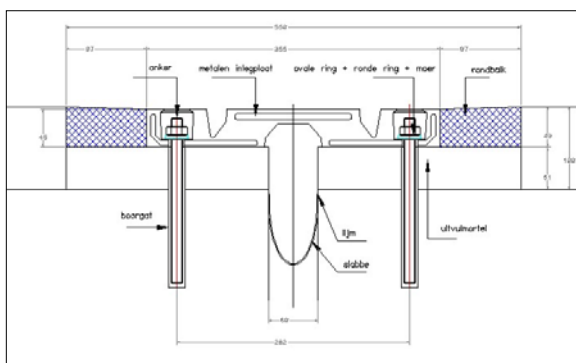
De enkele voegen zijn afhankelijk van type en fabrikaat geschikt voor dilataties tot ongeveer 180mm.

# Mattenvoegen

## Freyssinet M



## IBEMA DENSO Algaflex T 30-160



Tot op heden is alleen ervaring opgedaan met enkelvoudige typen Algaflex en Multiflex. Bij dubbele voegen in buitenland is waargenomen dat ze veel geluid produceren. **Ze zijn niet altijd volledig waterdicht.**

### Problemen:

1. De voegen zijn gevoelig voor slijtage, dit is vooral waarneembaar in bochten en locaties waar sterk wordt geremd of opgetrokken
2. Wanneer de verankering slecht wordt uitgevoerd kan deze loskomen of breken.
3. Kruip in kunsthars kan leiden tot loskomen van de ankers

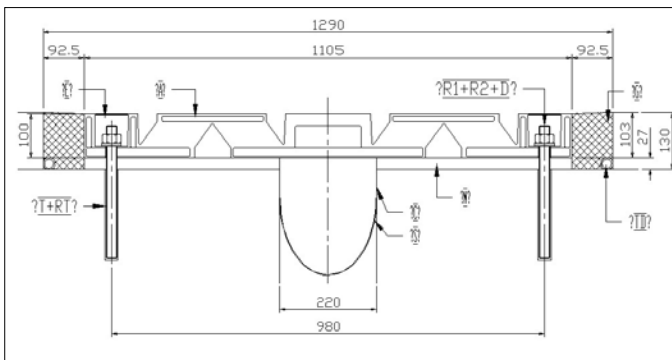
### Onderhoud en reparatie:

Mat vervangen (gaat vaak gepaard met opnieuw) aanbrengen van ankers in nieuwe gaten.

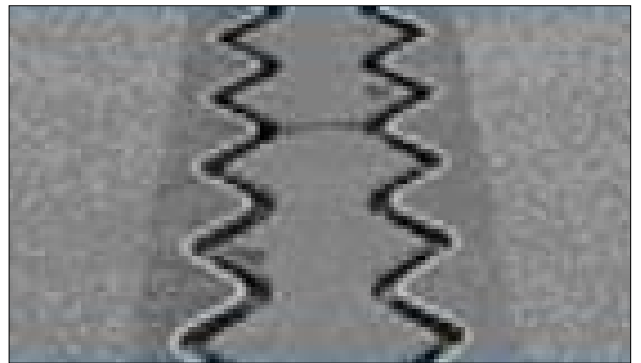
## Mattenvoegen

---

### IBEMA DENSO Algaflex T200-350



### Mageba Rubbermat Sinusplatten

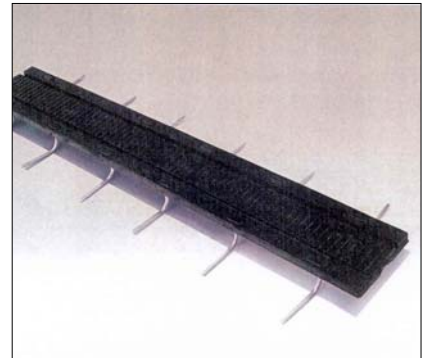
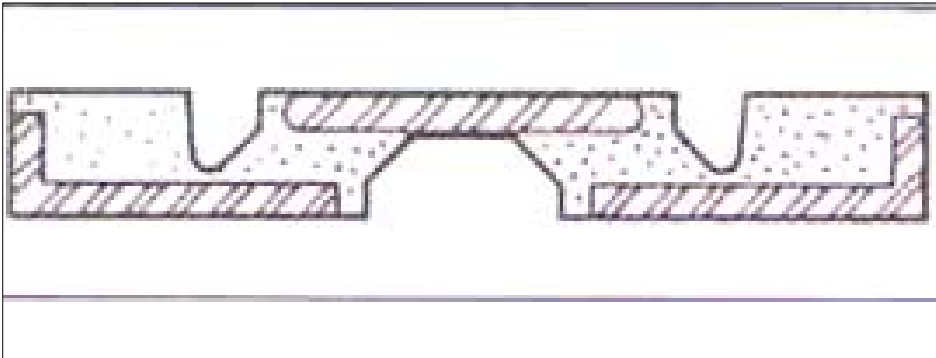




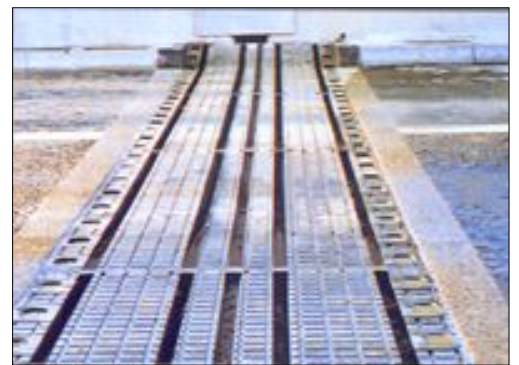
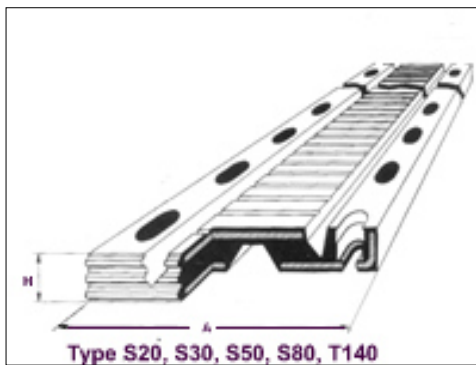
## Mattenvoegen

---

### Proceq Tensa TF joint



### Reisner & Wolff Engineering Multiflex T



Voorheen SHW profielen.

Firma overgenomen door SBT (Schwabische Brückentechnik)

Overgekocht door Freyssinet

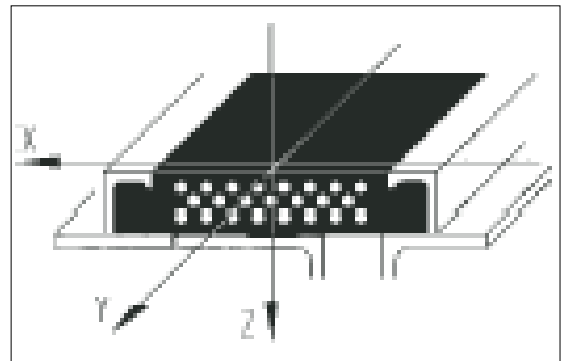
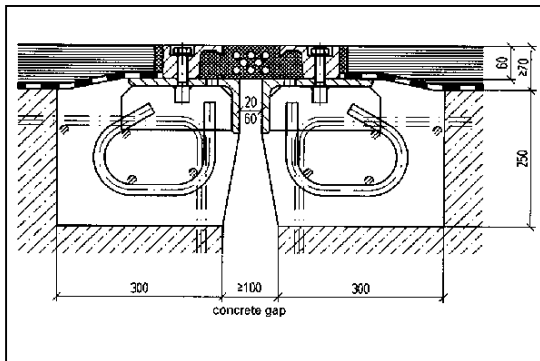
Tegenwoordig bestaat de firma niet meer.

Dezelfde profielen worden nu geleverd door Reisner & Wolff Engineering

# Mattenvoegen

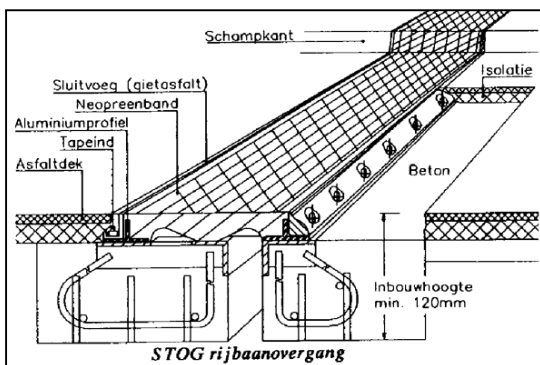
## Sollinger Hütte

### T



## Stog

### ST



Deze voegen zijn verkrijgbaar als “halve”, maar ook dubbele van het getoonde type. Bij de laatste is er een additionele beweegbare draagconstructie toegevoegd. Waterdicht. Dubbele STOG op onderslagconstructie niet toepassen.

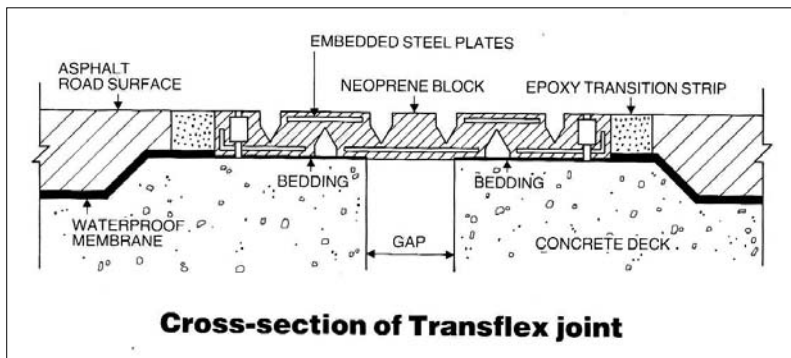
#### Problemen:

1. Boutverbinding lost
2. Scheurvorming boven T-profiel
3. Middendeel gaat klapperen door slijtage
4. Slijtage

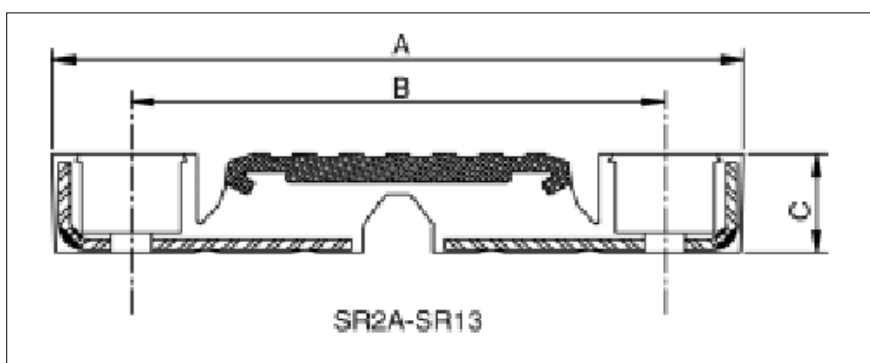
#### Onderhoud en reparatie:

1. Bouten vervangen
2. Mat vervangen

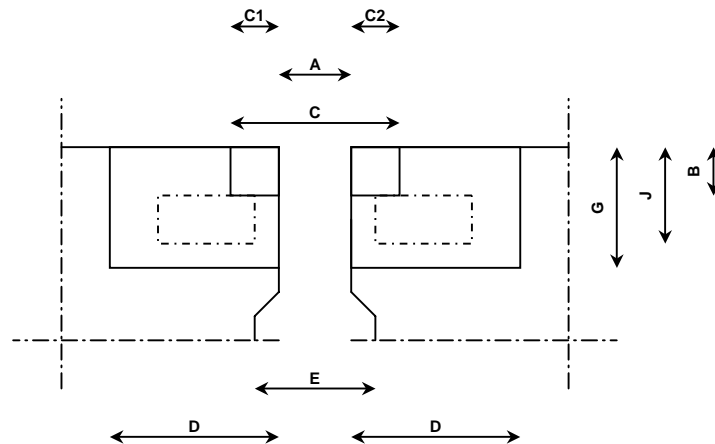
## WaBo Flex



## WaBo TransFlex



# RANDPROFIELVOEGEN



## Principe:

De randen (nosings) dragen de verkeersbelasting, het afdichtingsprofiel is aanwezig voor de waterdichtheid.

## Problemen:

1. Nosing joints van epoxy balken zijn niet schokbestendig
2. Lijmverbindingen van rubberprofielen met betonnen of epoxy nosings laten los.
3. Slecht verankerde nosing joints kunnen gaan loszitten
4. Corrosie stalen nosings
5. Lekkage

In Nederland is geen tot weinig ervaring met rubberen en aluminium nosing joints.

## Onderhoud:

2. Reinigen
3. Rubbers vervangen
4. Conservering herstellen

## Opmerking:

Duidelijk hoorbaar

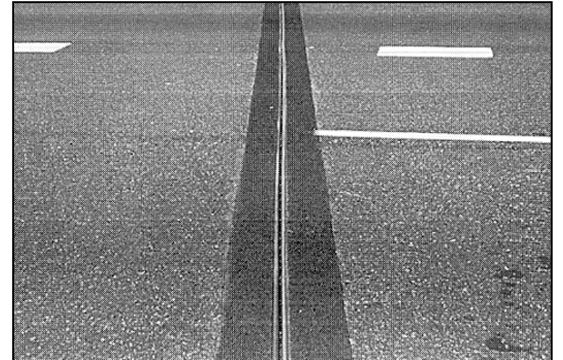
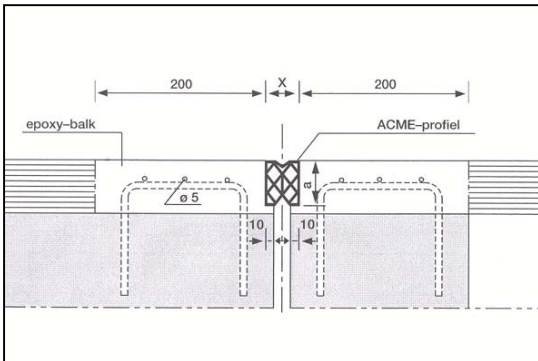
Geluidbeperkende maatregelen leiden tot vervuiling.

## Randprofielvoegen

**ACME**

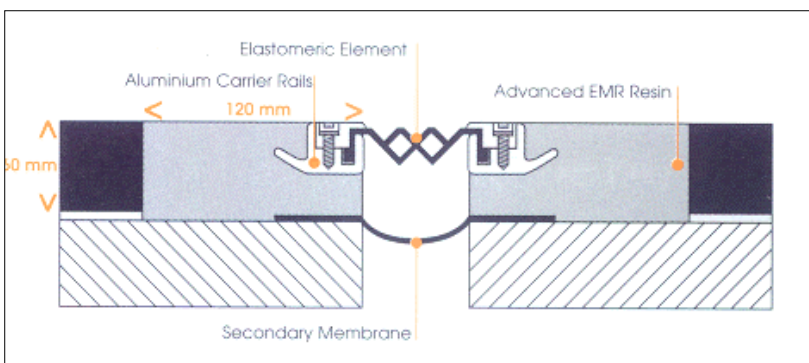
**AK**

**Kunstharsbalk**

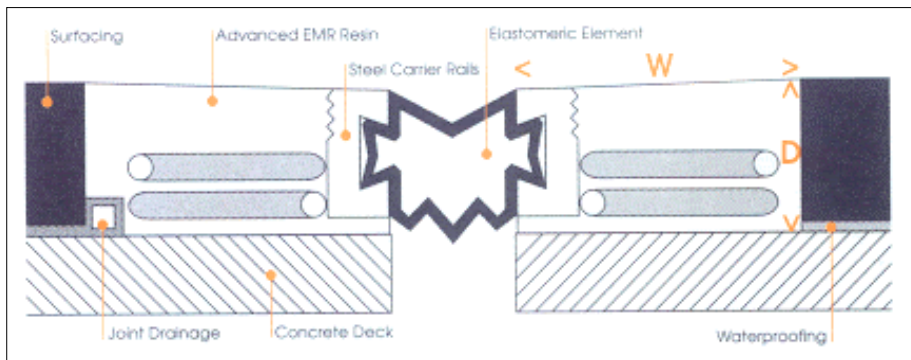


**ASL CONTRACTS**

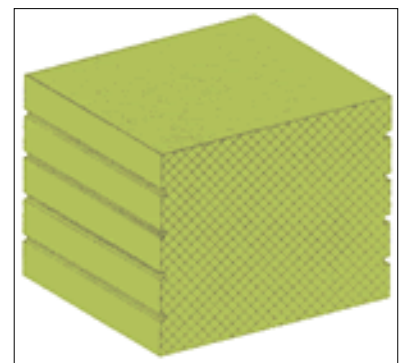
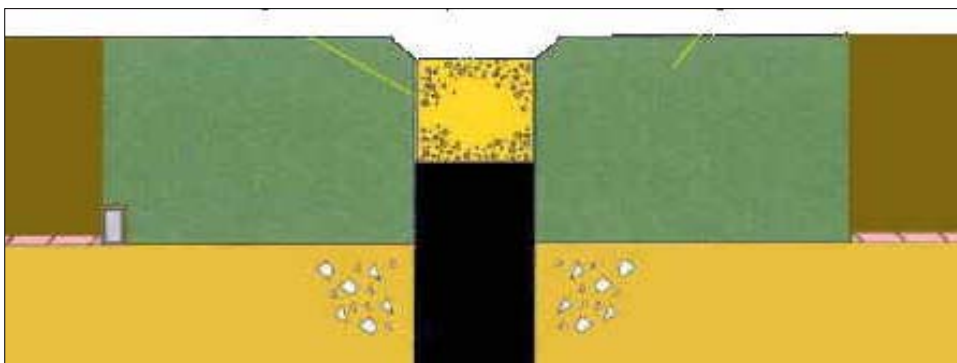
**ADVANCED EMR® RESIN**



### ASL CONTRACTS ADVANCED EMR®



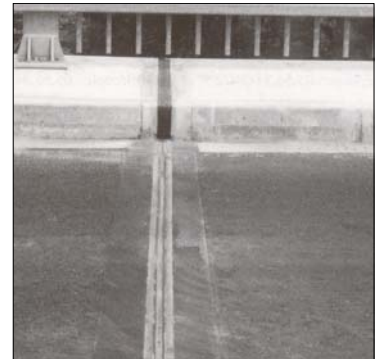
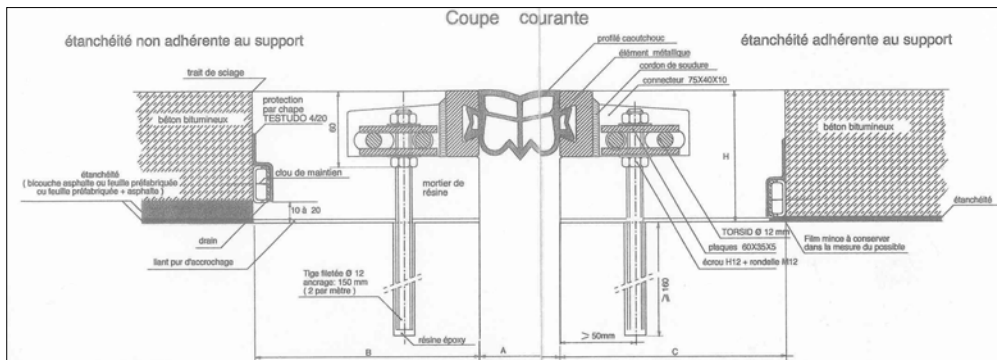
### ASL CONTRACTS ADVANCED Coldfoam nosing



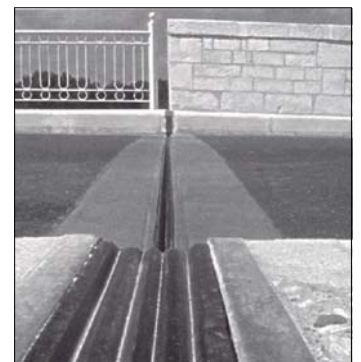
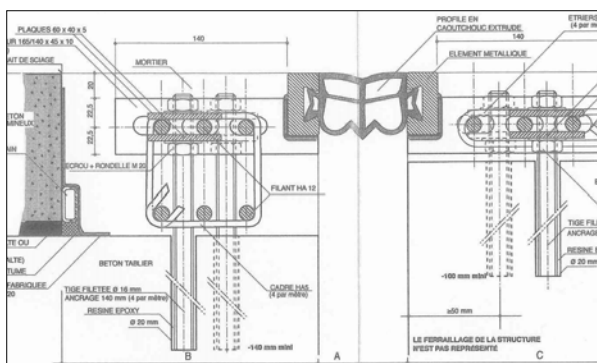


# Randprofielvoegen

## BTPS BETA 30/50



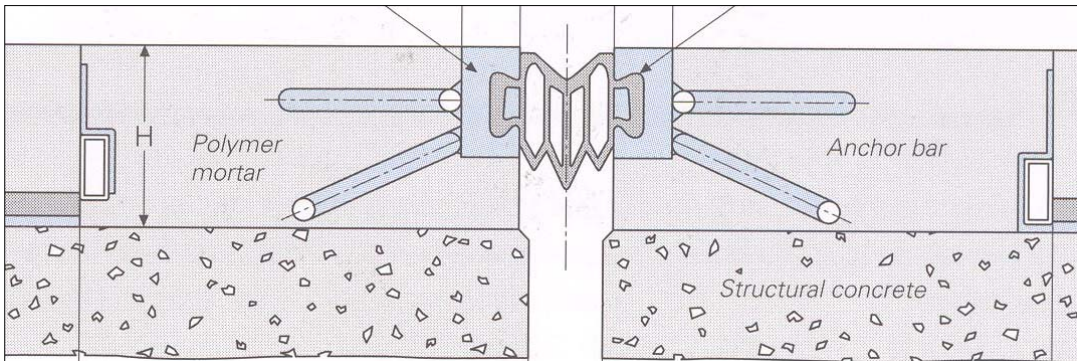
## BTPS BETA B30/50



CIPEC

JEP 3/5

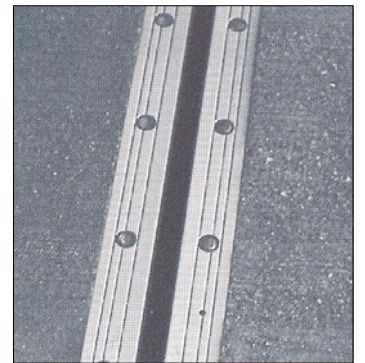
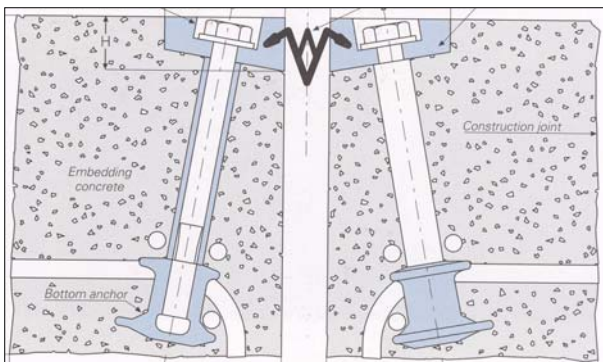
sinusoïde-verankering



CIPEC

WOSd

Boutverankering

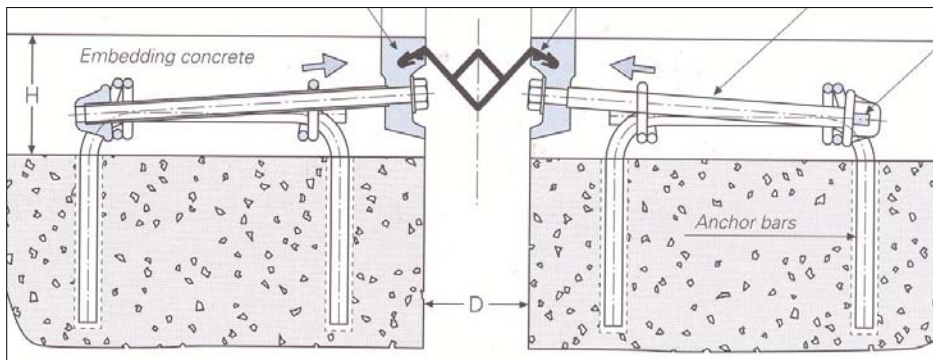


## Randprofielvoegen

CIPEC

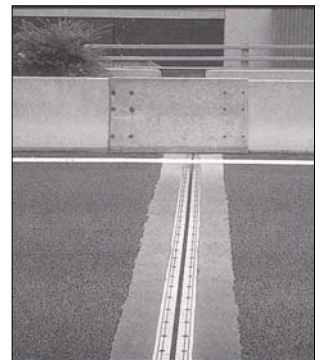
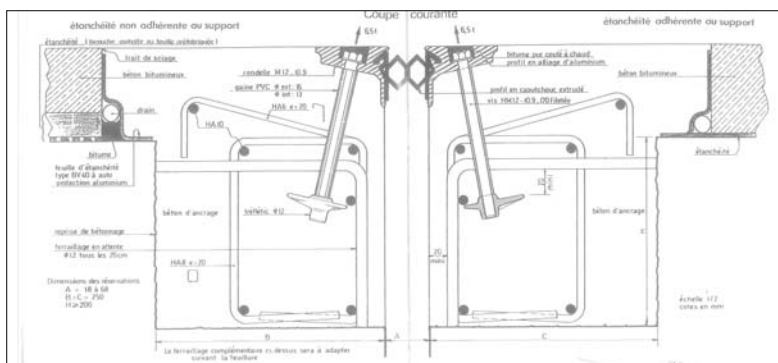
WR

Boutverankering

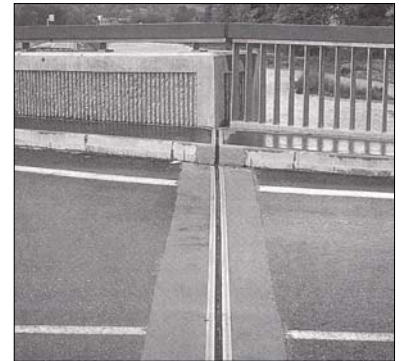
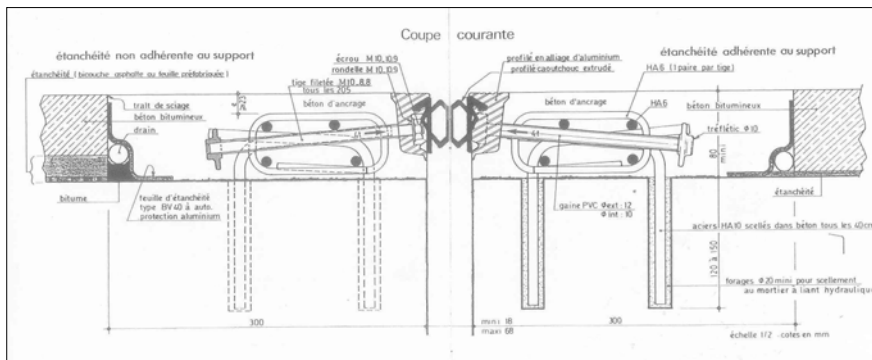


ETIC

EJ 50



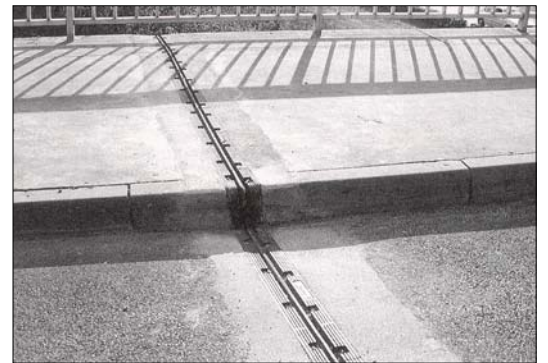
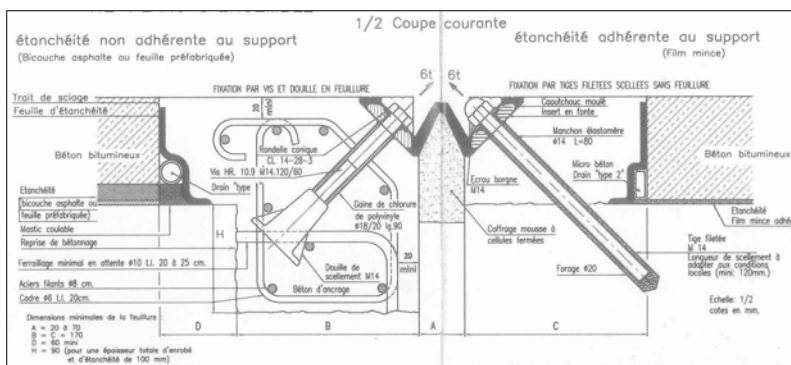
**ETIC**  
**EJ 50S**



# Freyssinet

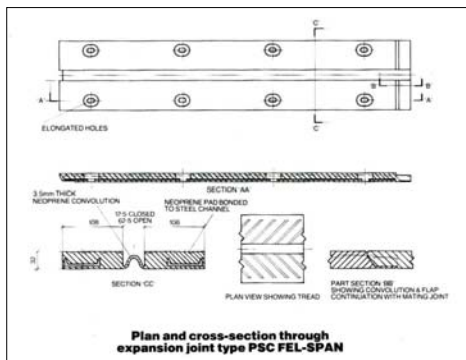
## N

### Boutverankering

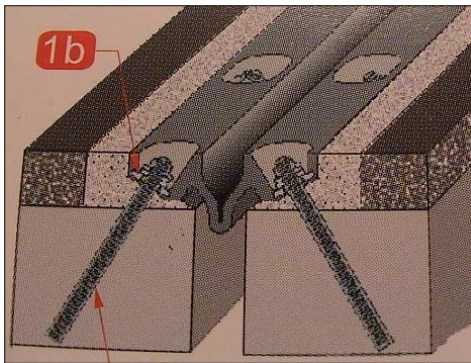




### Freyssinet PSC FEL-SPAN



### IBEMA DENSO Algaflex AW 100 rubber



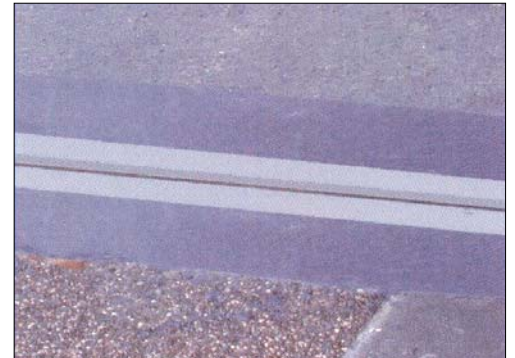
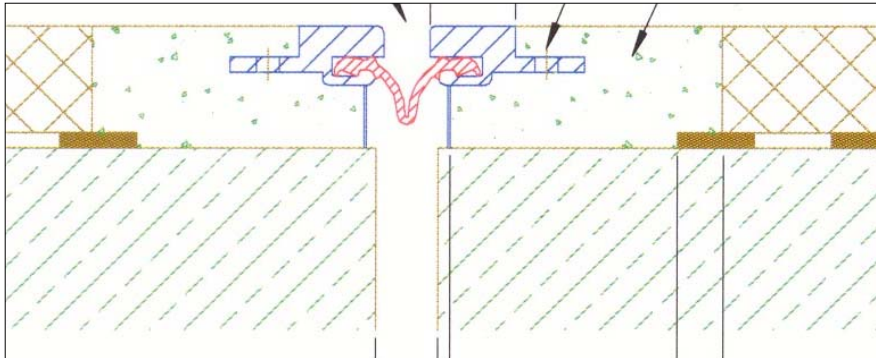
## Randprofielvoegen

---

**Mageba**

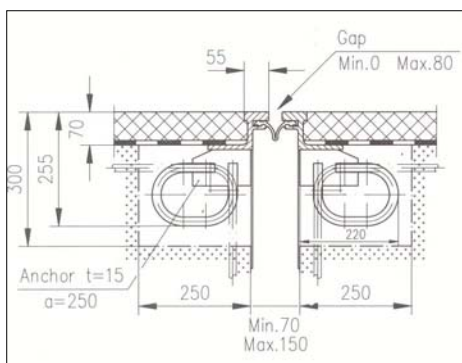
**RE**

**Polymeerbetonvoeg**



**Mageba**

**RS**



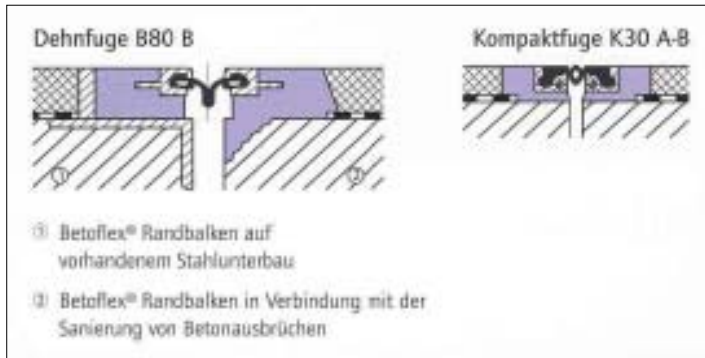


## Randprofielvoegen

**Maurer**

**Betoflex**

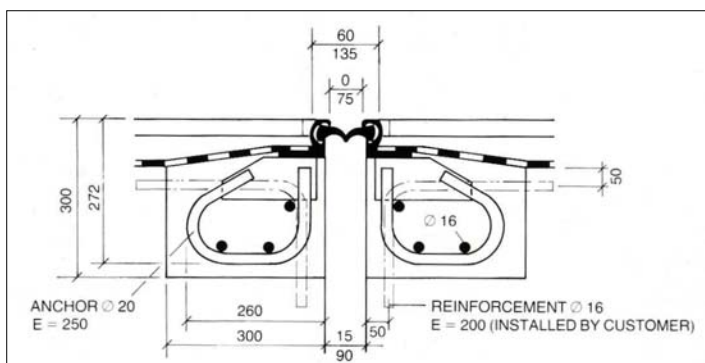
**Polymeerbetonvoeg**



**Maurer**

**D75**

**gekoppelde verankering**



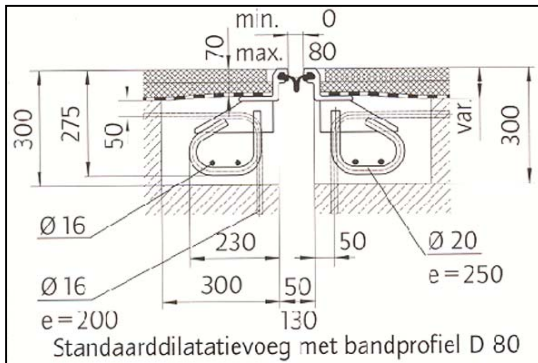
- Duitse toepassing bij maximale loopweg van 75 mm

## Randprofielvoegen

**Maurer**

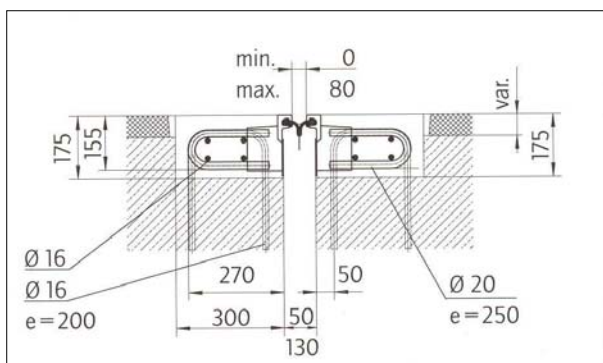
**D80, variant 1**

**Klawwprofiel met bandprofiel**



**Maurer**

**D80, variant 2**



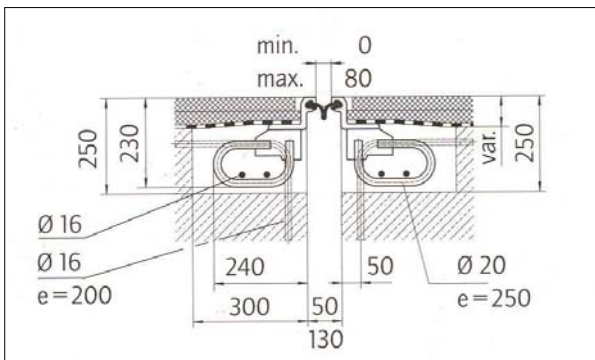
- **Fundering geïntegreerd met bovenbouw**
- **Renovatie-alternatief**

## Randprofielvoegen

---

**Maurer**

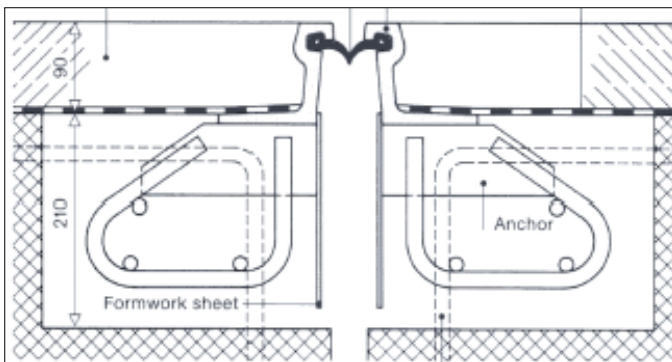
**D80, variant 3**



- Oostenrijks alternatief
- Grote inbouwhoogte mogelijk

**Proceq**

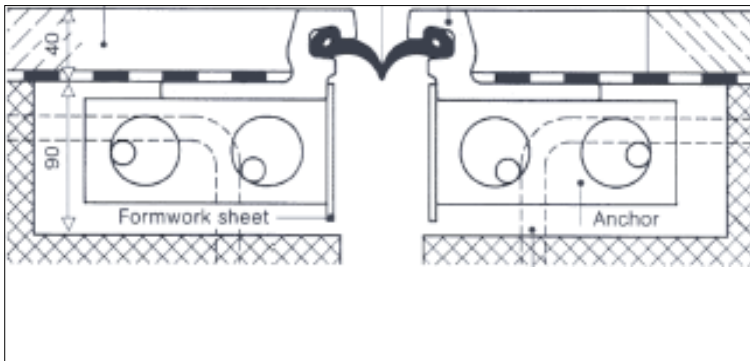
**Tensa grip GL**



## Randprofielvoegen

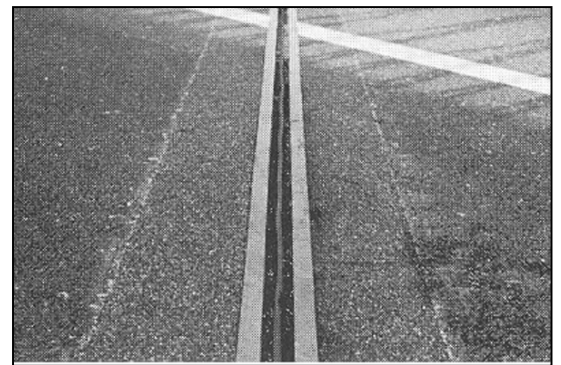
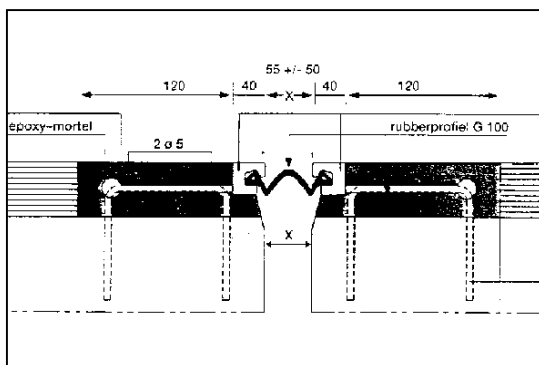
---

### Proceq Tensa grip GS

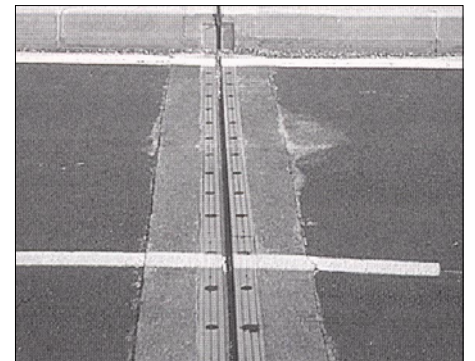
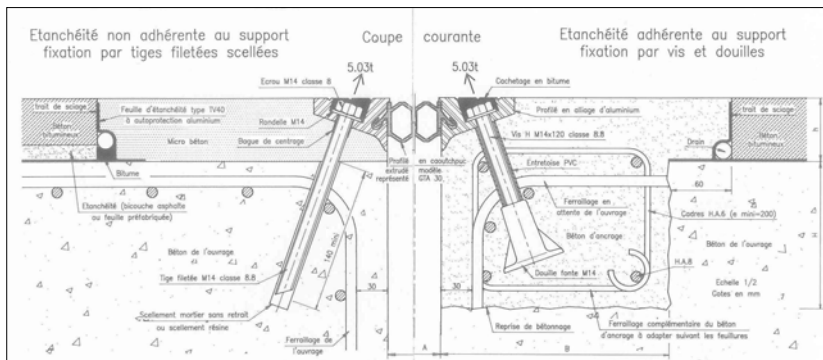


### voedpadoplossing

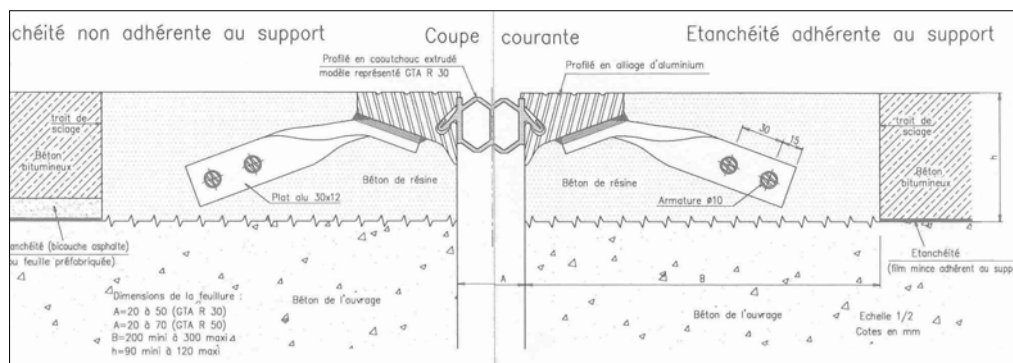
### Proceq Tensa klauw GSK Kunstharsbetonbalk



## RCA GTA



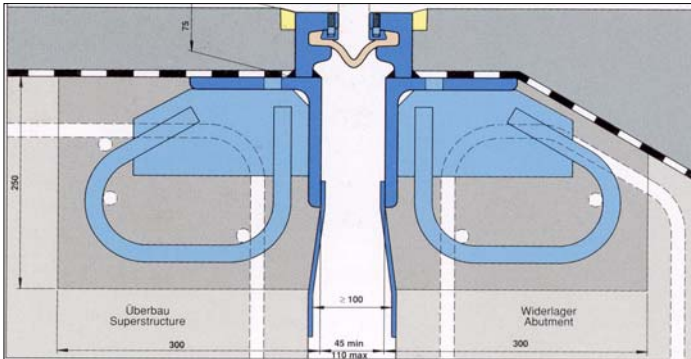
## RCA GTAR



## Randprofielvoegen

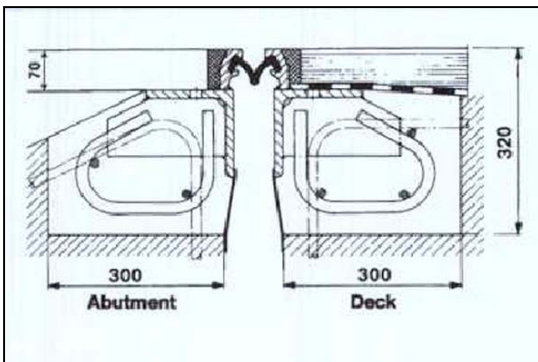
---

### Reisner & Wolff Engineering 3w



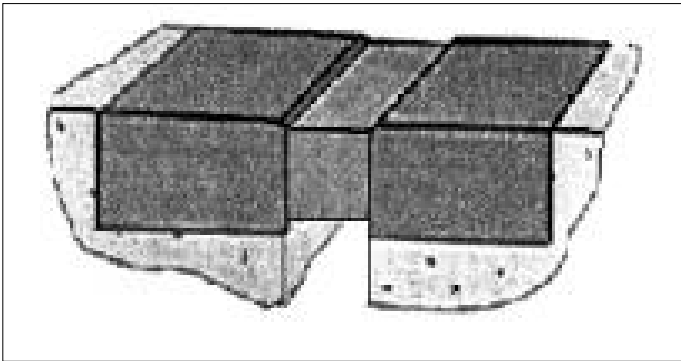
Voorheen SHW (Schwabische Hütte Werke)  
Firma overgenomen door SBT (Schwabische Brückentechnik)  
Overgekocht door Freyssinet  
Tegenwoordig bestaat de firma niet meer.  
Dezelfde profielen worden nu geleverd door Reisner & Wolff Engineering

### Sollinger Hütte WSF

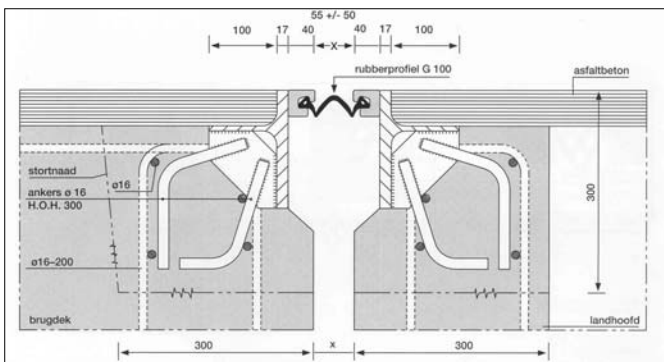




### SMITS NEUCHATEL PROFLEX



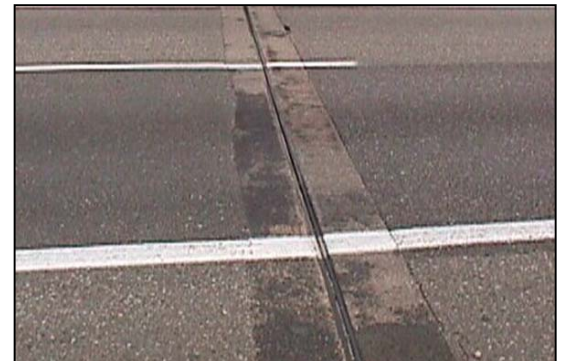
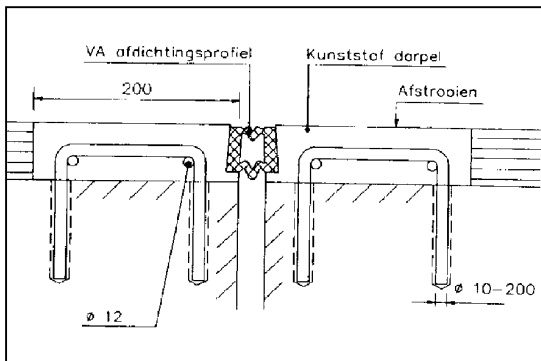
### Spanstaal Tensa grip AS Staal-epoxybetonbalk



## Randprofielvoegen

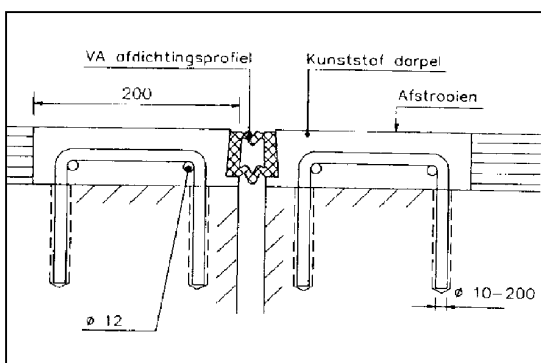
### Vredestein

#### Kunstharsbalk met VA-profiel



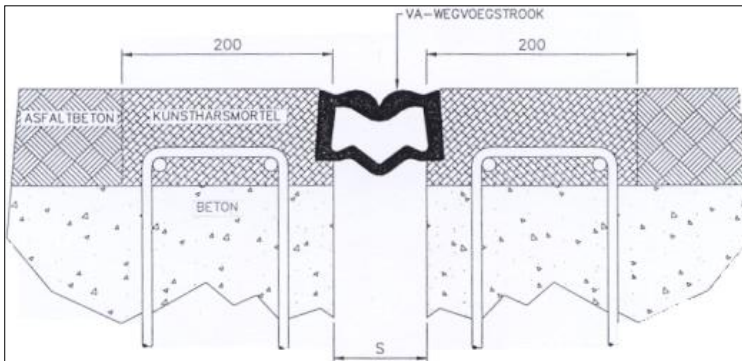
### Vredestein

#### Staalvezelbetonbalk met VA-profiel

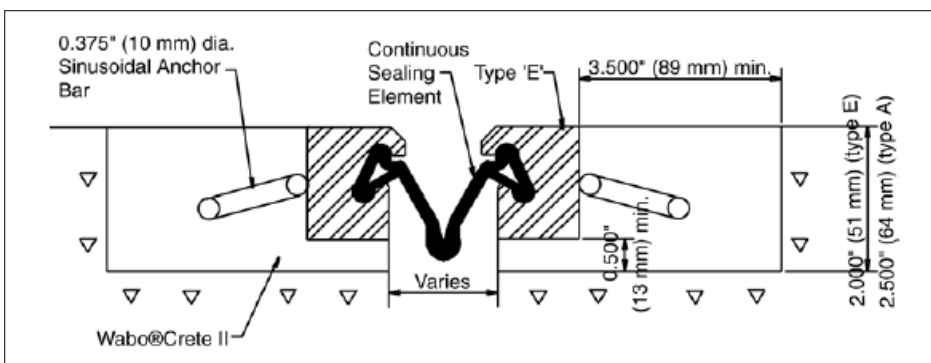


# Randprofielvoegen

## Vredestein VA voegstroken

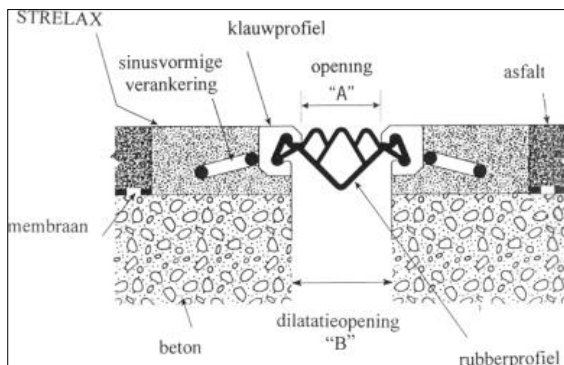


## WaBo (Crete) StripSeal

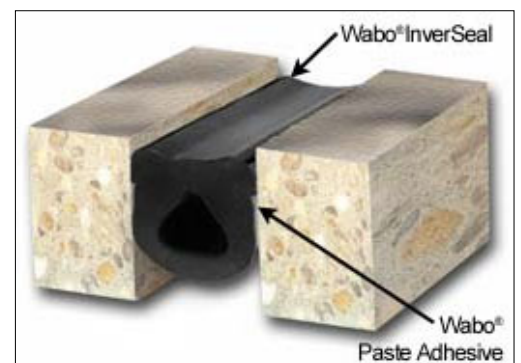
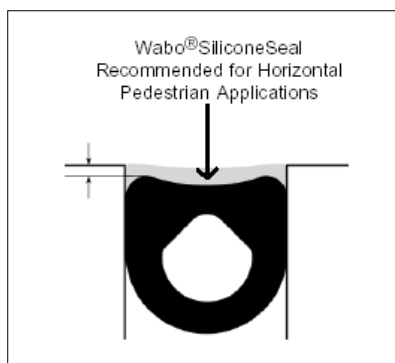


## Randprofielvoegen

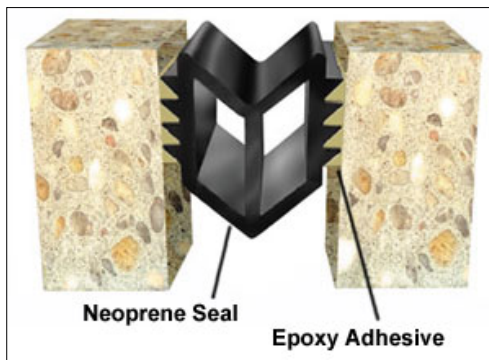
### WaBo ER



### WaBo InverSeal



### WaBo Jeene



#### TYPICAL APPLICATIONS:

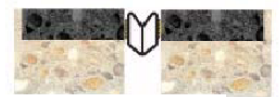
New Concrete Condition



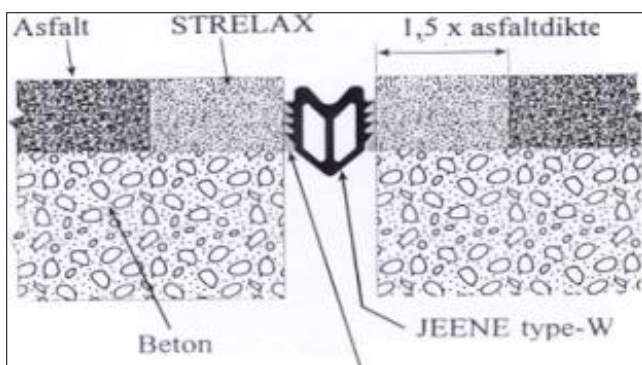
Armored Condition



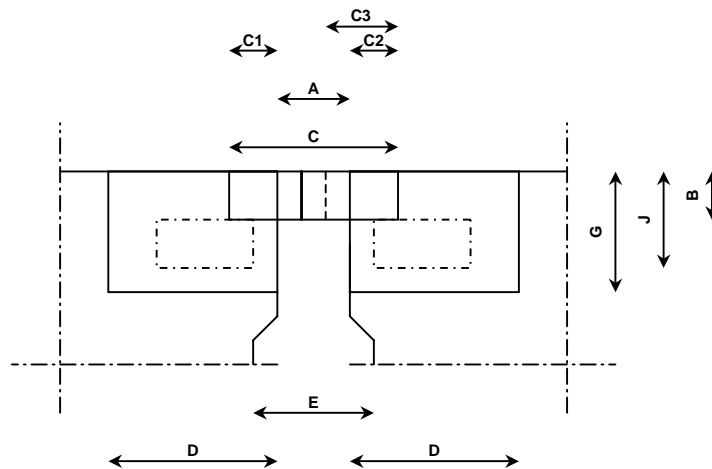
Rehab Condition



### WaBo Strelax met Jeene rubber



# UITKRAGENDE VOEGEN



## Principe:

De uitkragende tanden of vingers dragen de verkeersbelasting, de ruimte tussen de tanden wordt gebruikt voor het opnemen van de dilataties.

Er dient op gelet te worden dat de bewegingen van de brug geen onacceptabele hoogteverschillen tussen de vertande platen veroorzaken.

## Problemen:

1. Korte verankeringen kunnen vermoeiing vertonen.
2. Vervuiling

## Onderhoud en reparatie:

1. Reiniging
2. Vastzetten ankers

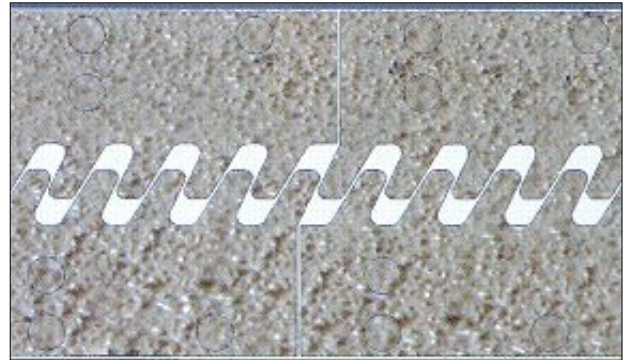
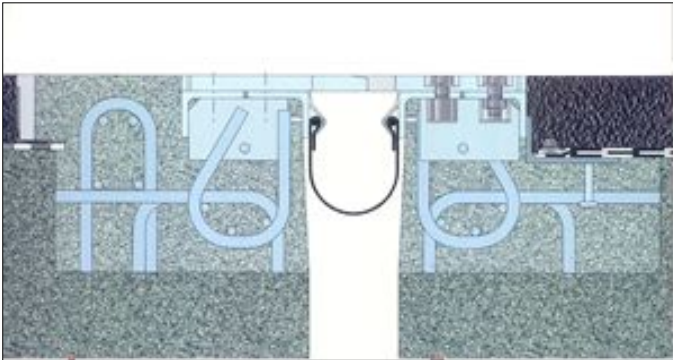
## Opmerking:

De voegen zijn stil, de waterafvoer moet gereinigd worden.

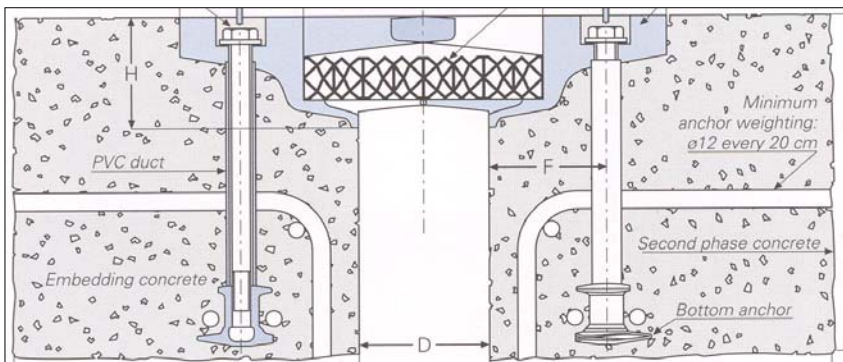


## Uitkragende voegen

### ASL CONTRACTS TRANSGRIP Finger joints

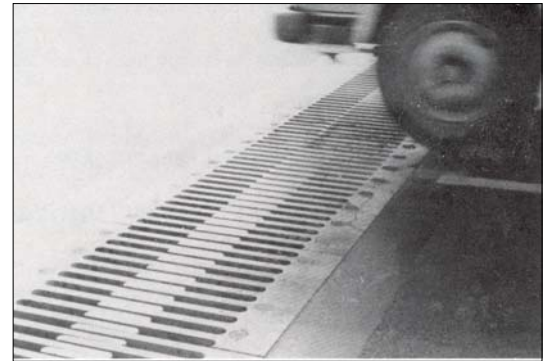
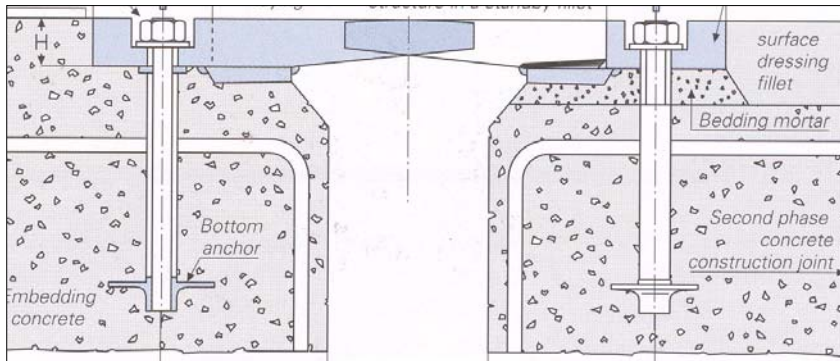


### CIPEC Wd TANDVOEG, waterdicht

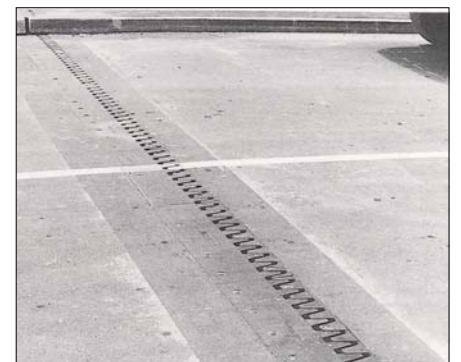
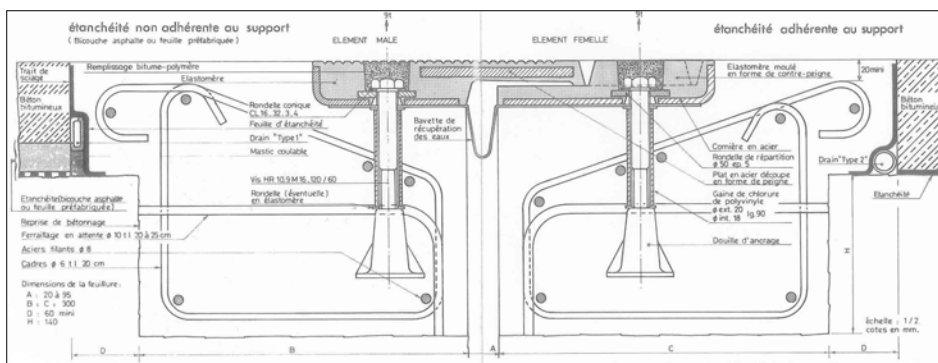


## Uitkragende voegen

### CIPEC WP VINGERVOEG



### Freyssinet FT TANDVOEG, waterdicht



## **Uitkragende voegen**

---

**Mageba**

**GF**

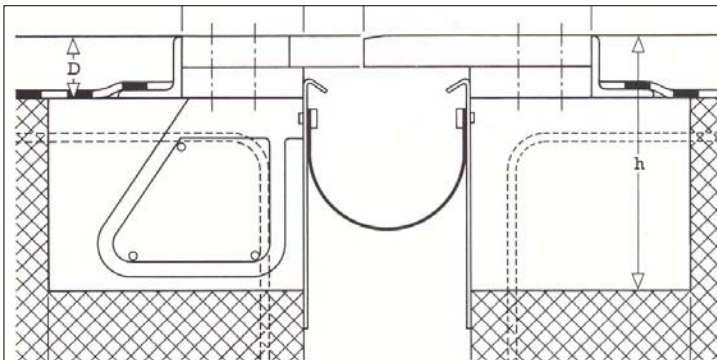
**Sliding finger joint**



**Proceq**

**Tensa Flexfinger K**

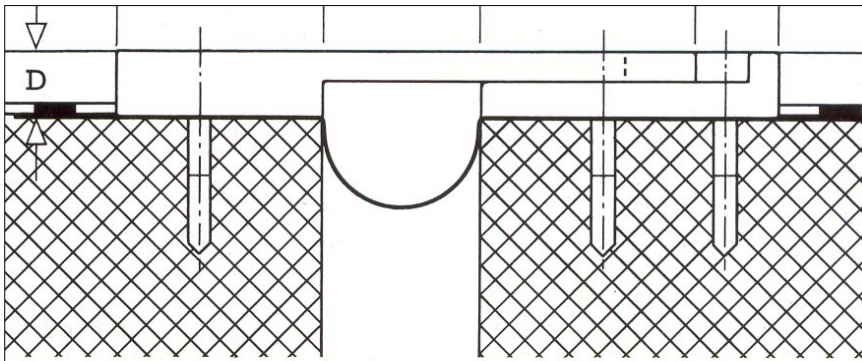
**uitkragend**



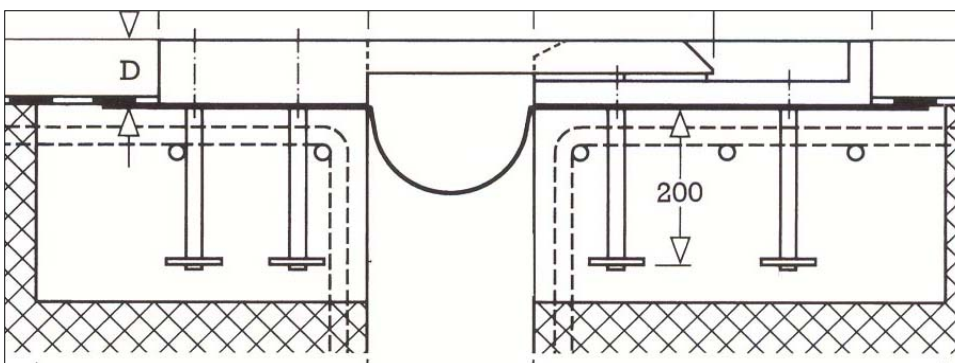
## Uitkragende voegen

---

### Proceq Tensa Flexfinger P Opgelegd



### Proceq Tensa Flexfinger R Opgelegd





### SOLLINGER HUETTE FS

