


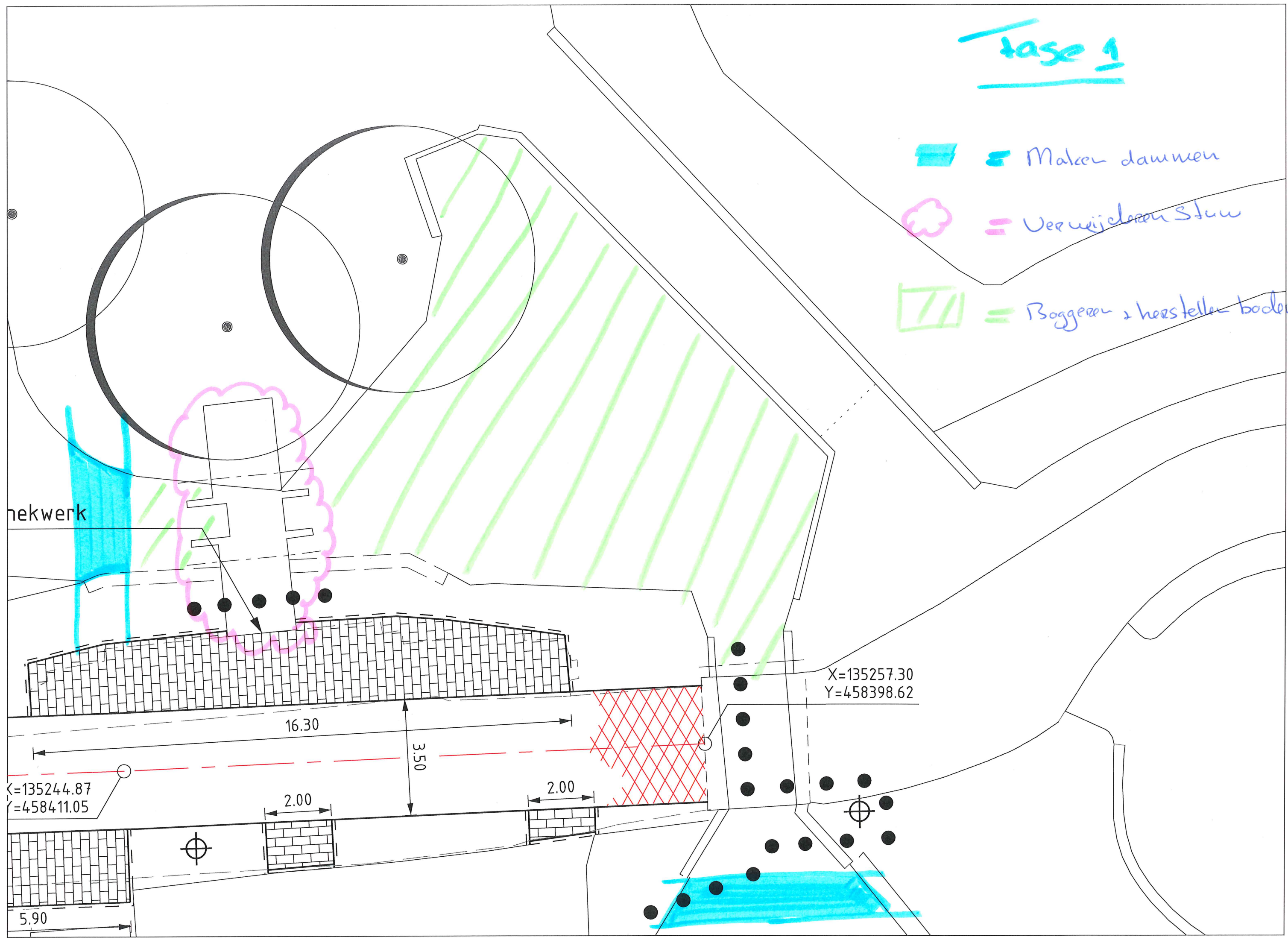


fase 1

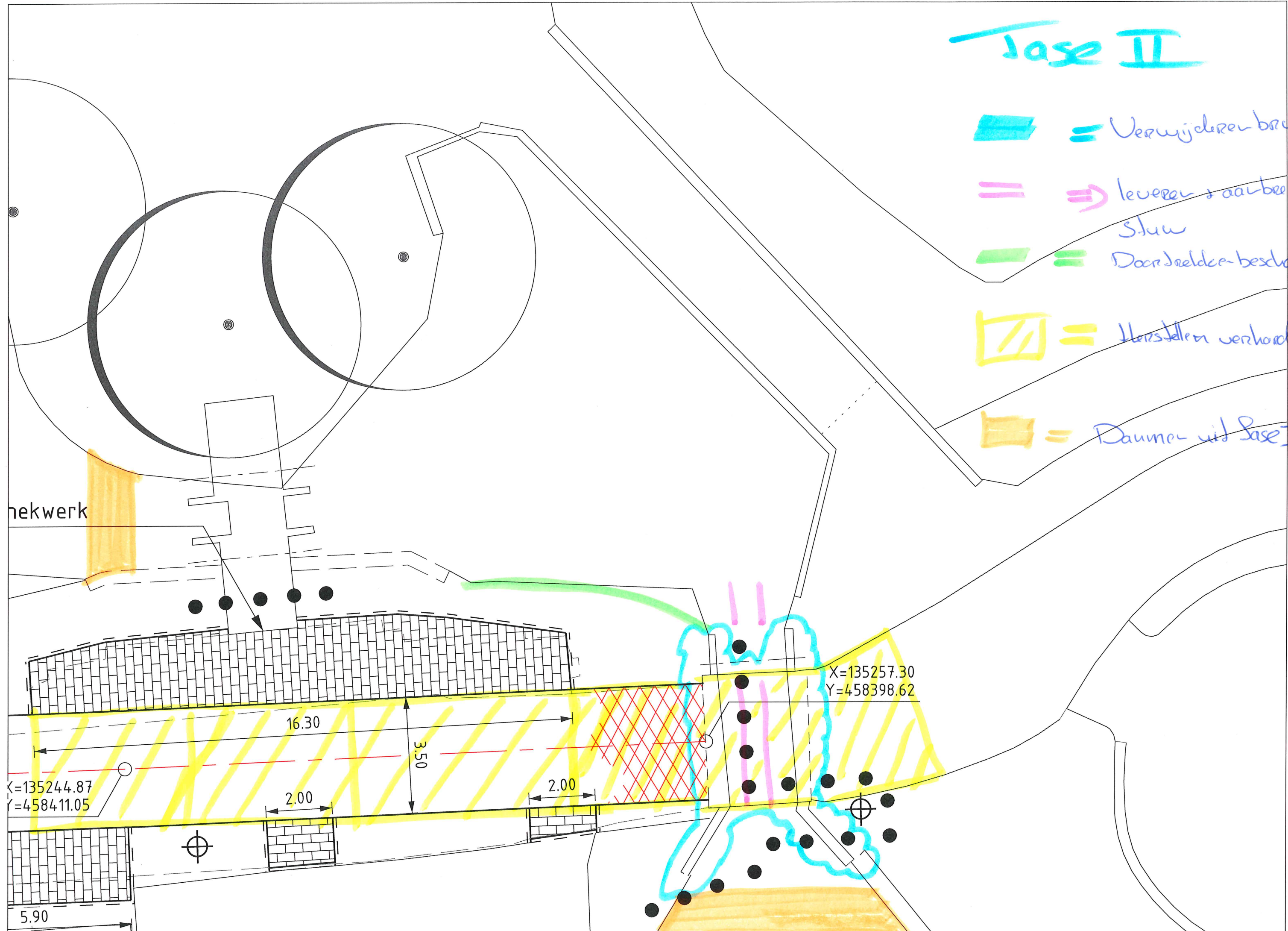
-  = Malen dammen
-  = Verwijderen Stuw
-  = Baggeren & herstellen bodem









# Tase II

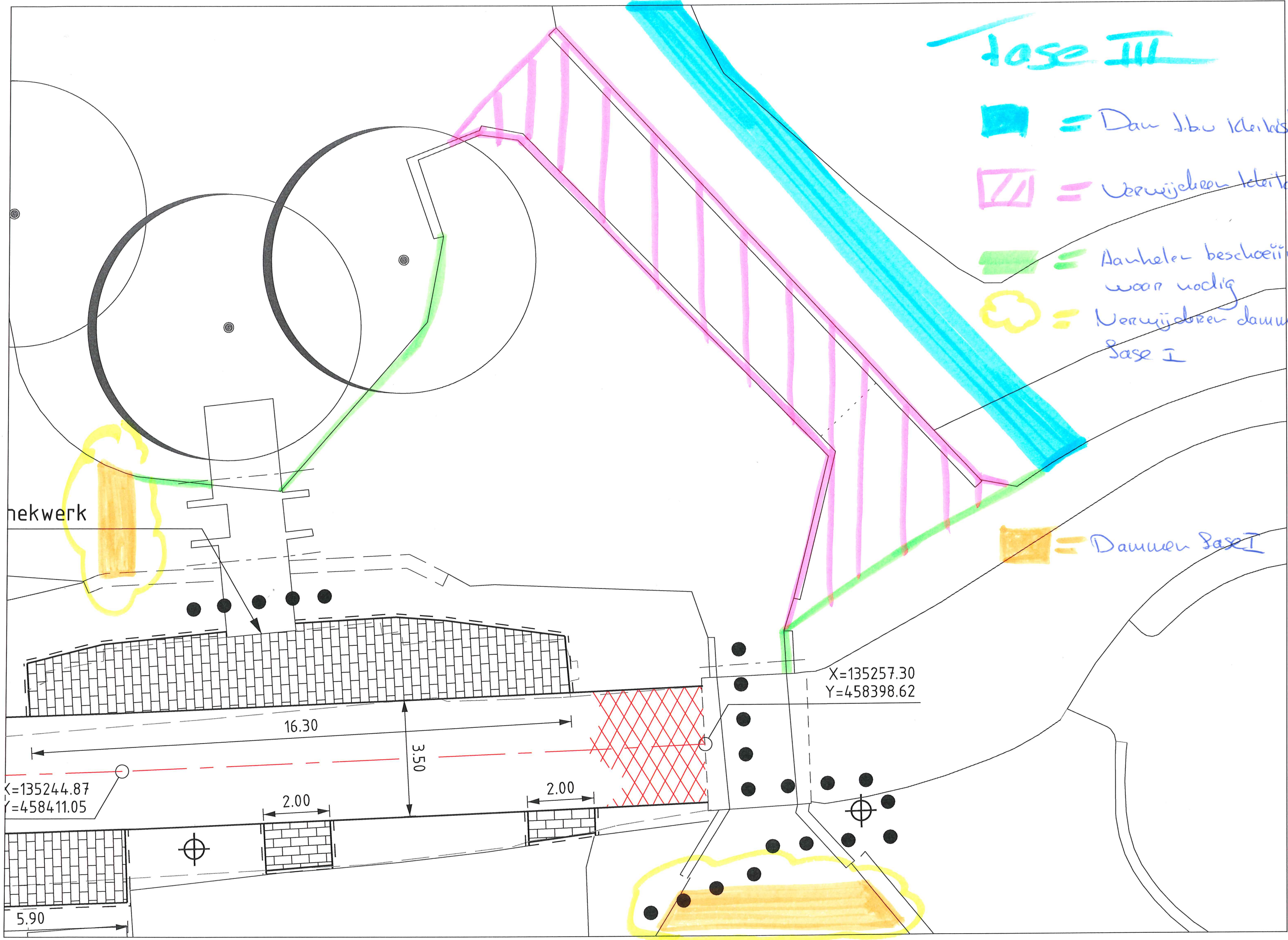
-  = Verwijderen brug
-  => lederen + aanbrengen  
Stuw
-  = Doorbreiden bescherming
-  = Herstellen verharding
-  = Dammen uit fase I





# fase III

-  = Dam I-bu kleirol
-  = Verwijderen kleirol
-  = Aanhele beschoeiing waar nodig
-  = Verwijderen dammen fase I





Eind situatie



hekwerk

