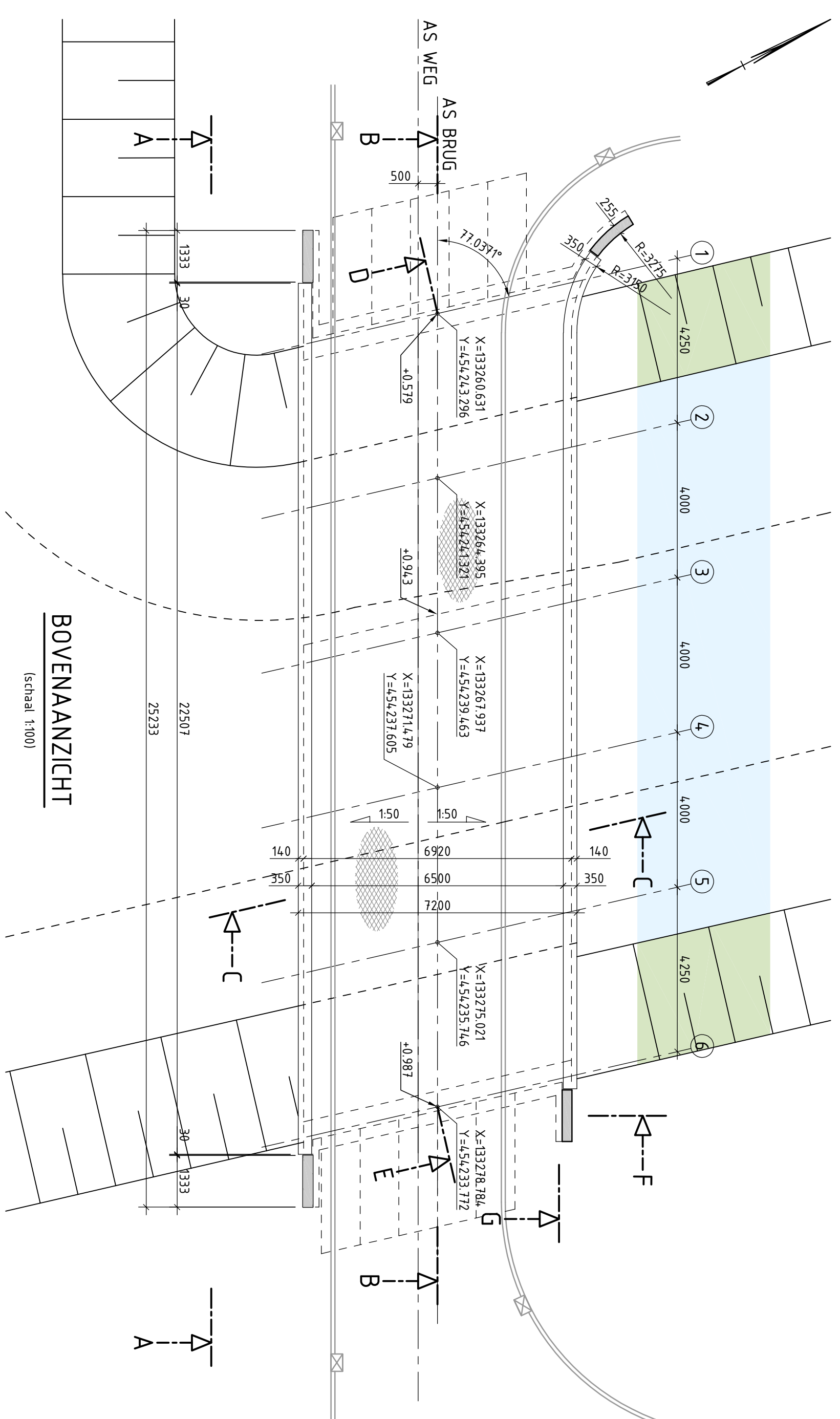
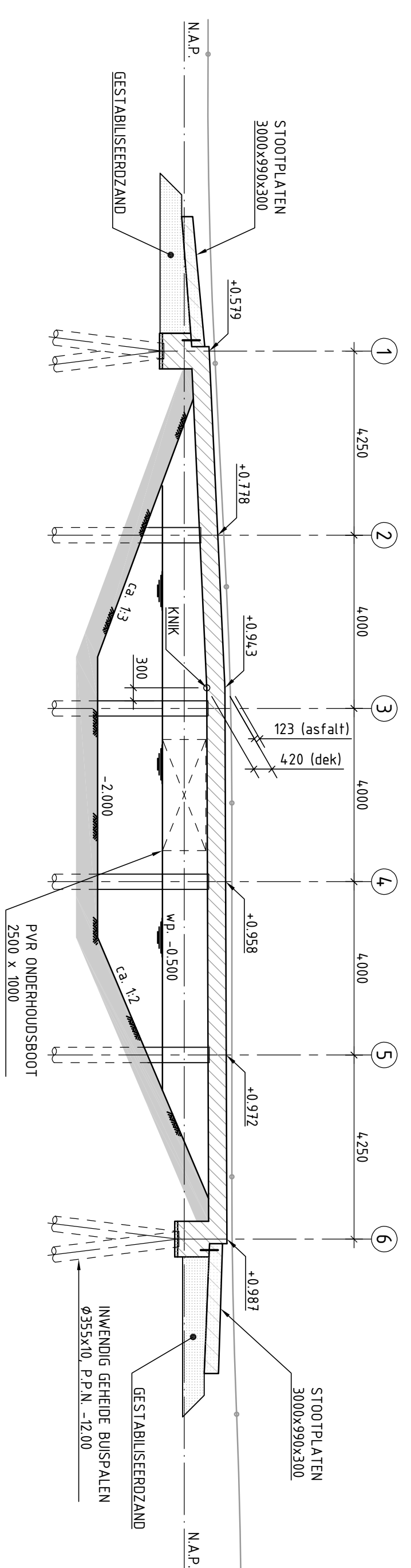


AANZICHT A-A

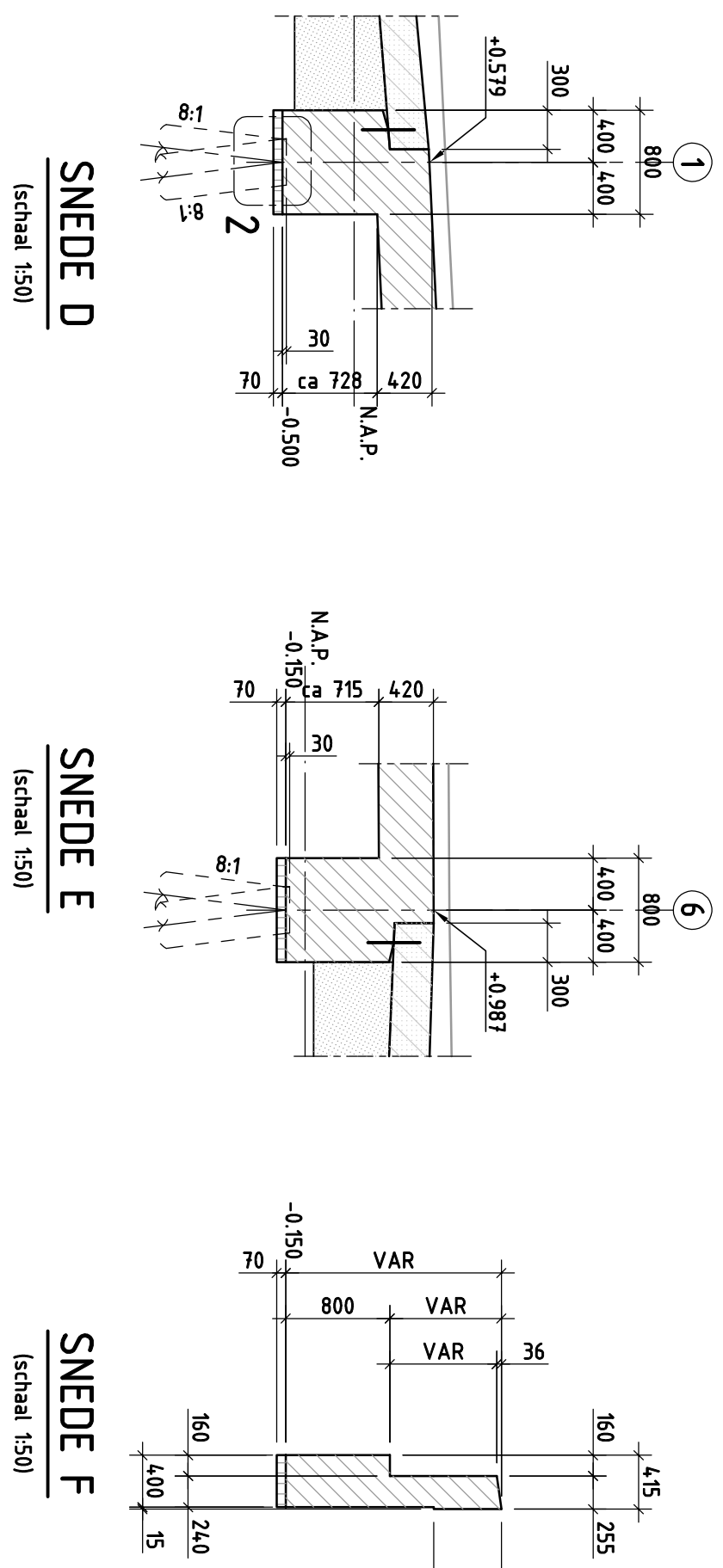


BOVENAANZICHT



LANGSDOORSNEDE B-B

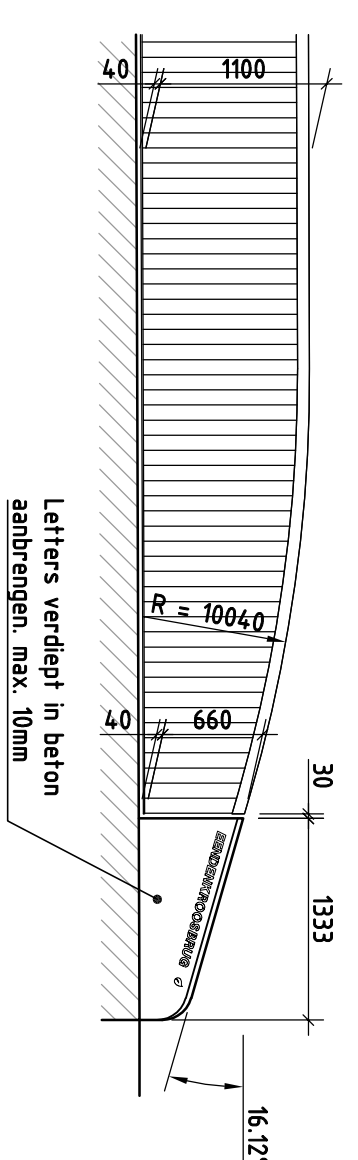
MAATVOERING IN AS BRUC



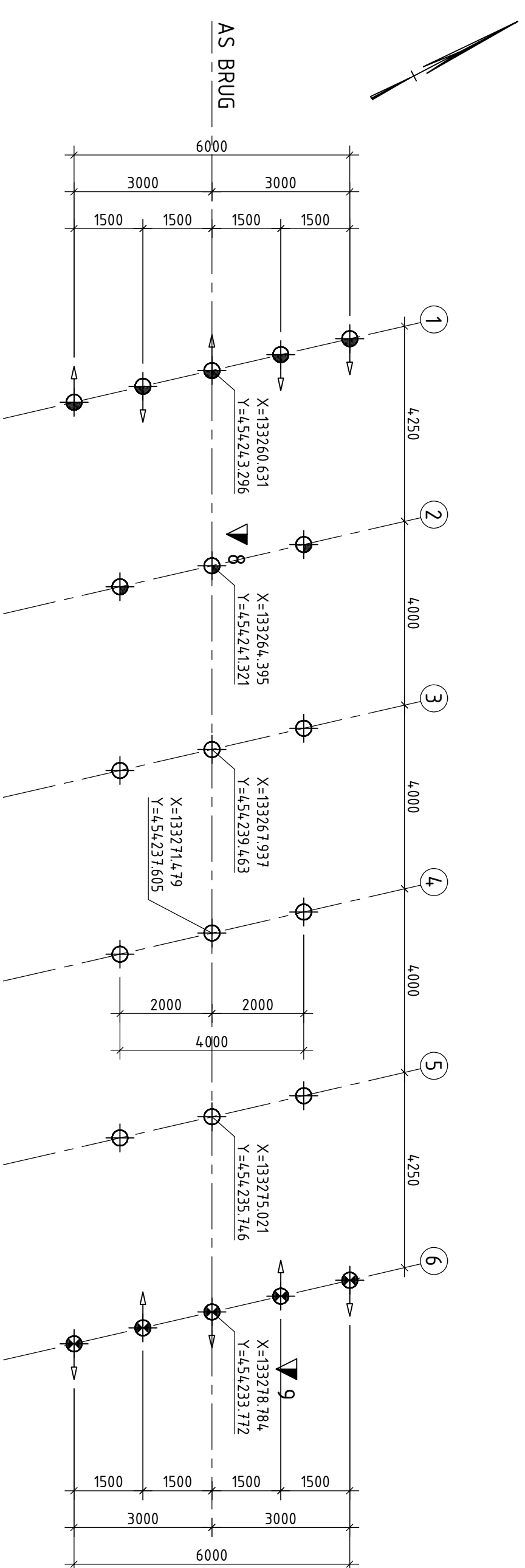
SNEDE D

SNEDE E

SNEDE F

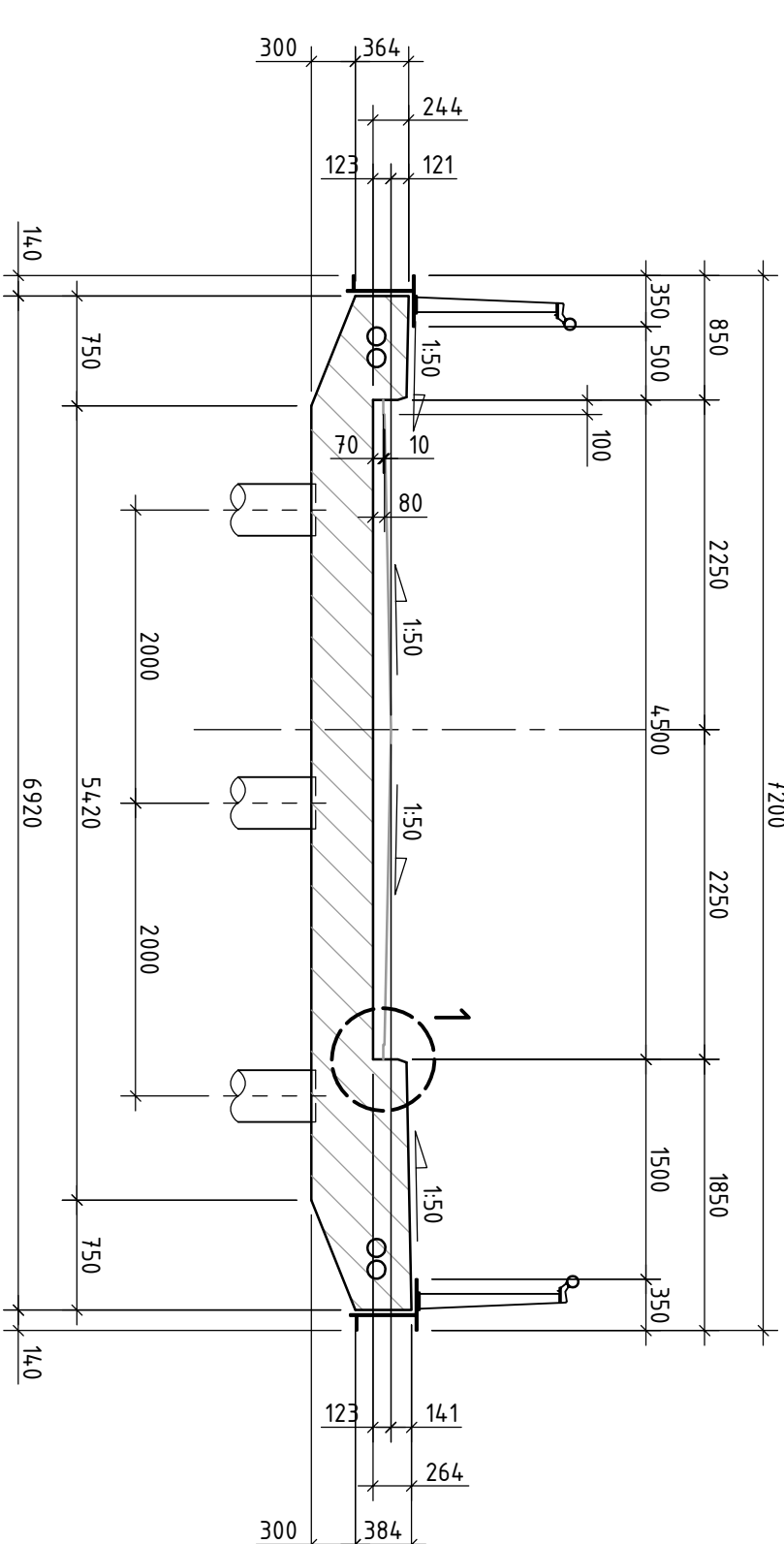


SNEDE G



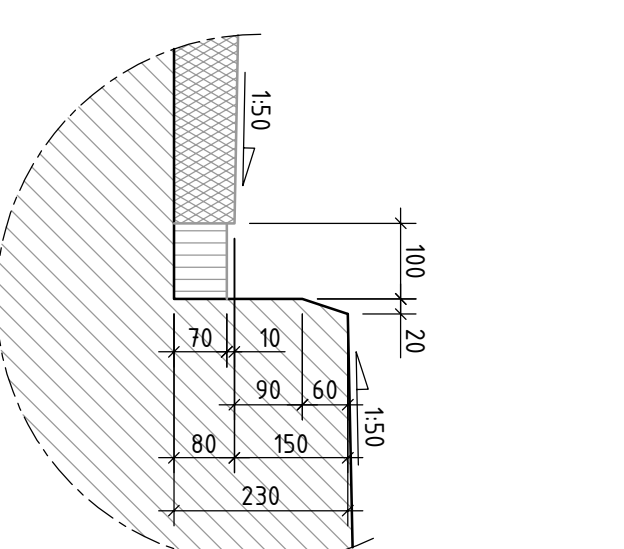
FUNDERINGSPLAN

| STAALN BUSPAAI 935x100 S355 VULLEN MET BETON (30/37) (VOERPLAAT 11 B, LEBERANIER) | | | | | | | | | |
|---|-----|-------------|-------------------------------|------------------------|---------|-------|-----------|----------------|------------|
| AS STEUNPUNT | REK | LENGTE IN M | PAALNUMERO IN M.T.O.V. K.A.P. | B. PAAL K.A.P. | HELING | ANVAL | KOPVERING | SPRAAIWIDENING | MEETKLASSE |
| AS 1 | → | 114,0 | -12,000 | -0,70 | 81 | 5 | 8° 20' | 8° 250 | X2 |
| AS 2 | → | 12,99 | -12,000 | +0,398 | TE L000 | 3 | 8° 20' | 8° 250 | X2 |
| AS 3 + 4 + 5 | → | 12,99 | -12,000 | +0,55 / +0,56 / +0,582 | TE L000 | 9 | 6° 6' | 8° 250 | X2 |
| AS 6 | → | 12,000 | -12,000 | -0,70 | 81 | 5 | 8° 20' | 8° 250 | X2 |



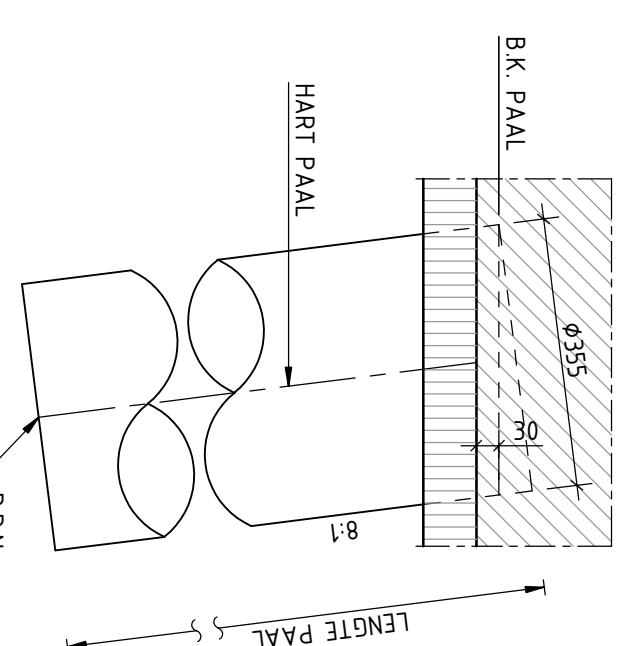
DWARSDOORSNEDE C-0

(schaal 1:50)



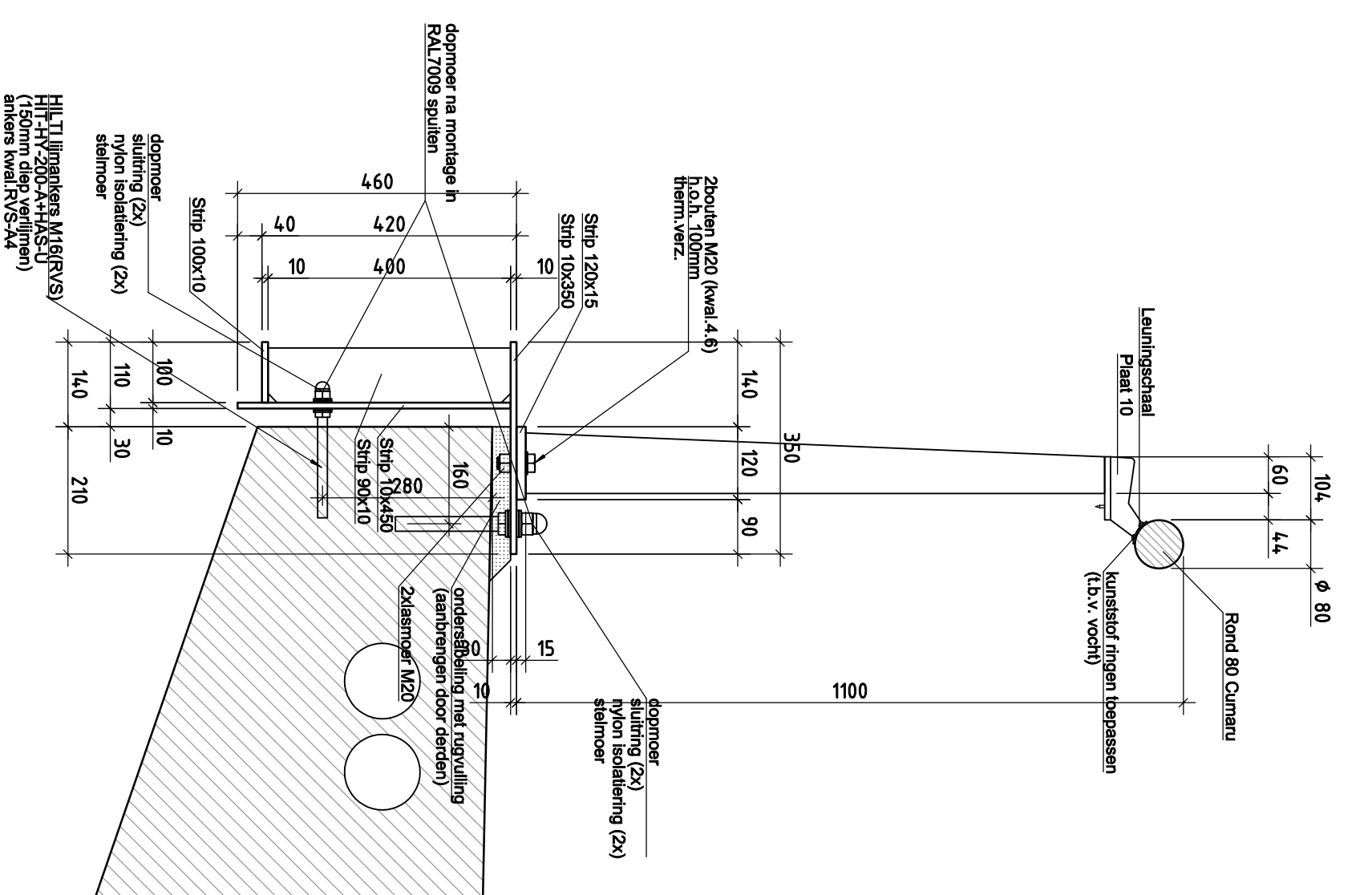
DETAIL 1

(1 schaal 1-10)



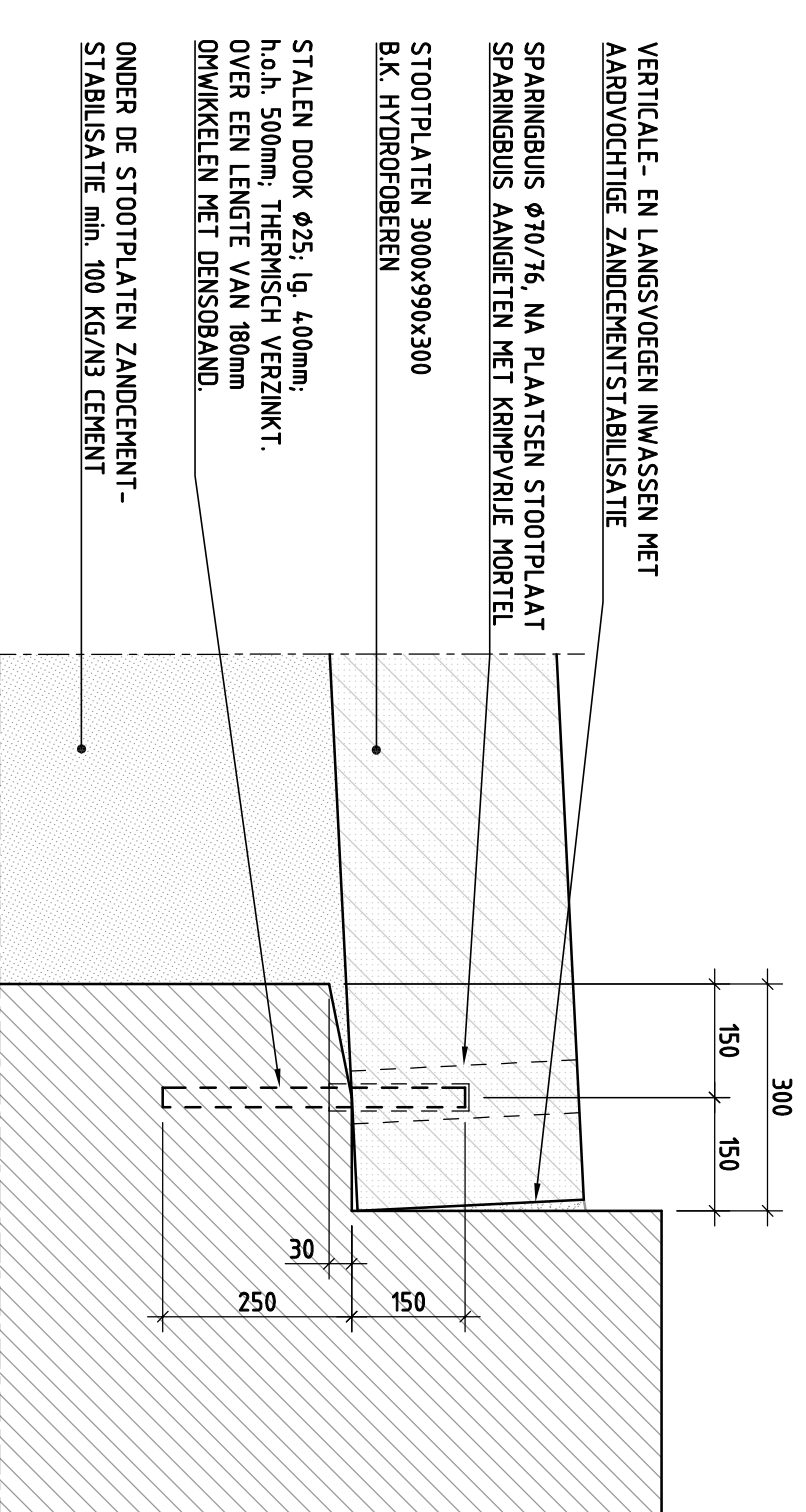
DETAIL 2

(school 13)



PRINCIPE RANDDETAIL

1 E:10



PRINCIPE PREFAB STOOTPLAAT

ISCHAAL 1:10

| | | | | | |
|------|------------|-----------------|---------|---------|---------|
| + | | | | | |
| - | | | | | |
| 1 | 21.10.2022 | DEPARTÉ GENERAL | | | |
| REV. | DATE | OBJET/REVISIONS | PREPARE | REVISER | VALIDER |

0506-620139


Gemeente Utrecht
Bouwopgave Leidsche Rijn

**VAN WILK
NIEUWEGEIN**



proo.fct

Bruggen Rijnvliet Utrecht



W-intra b.v.
Nieuwegein 10
3-16 ZZ Nieuwegein
Nederland
T +31 88 943 1200
www.w-intra.nl

| | |
|--------------|---------------|
| VERSION | 1 |
| CALVER | 23-10-2016 |
| GESTOR: | EDUARDO ALVES |
| PAG | 1 |
| FECH: | MAR 2017 |
| Nº | 100 |
| PROJETO | |
| INFR 2004/13 | |

[illegible]