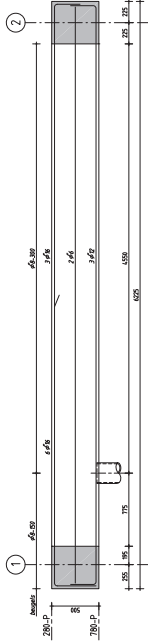
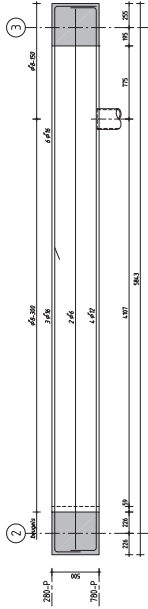


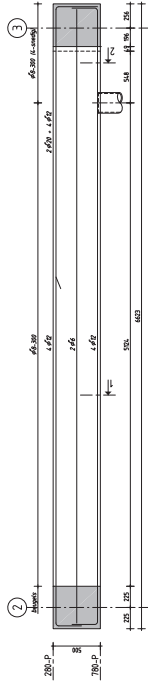
Drsn Balk F01



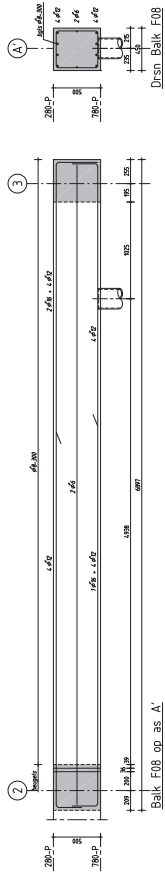
Drsn Balk F03



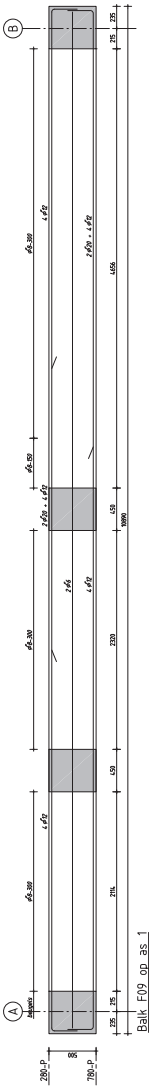
Drsn Balk F05



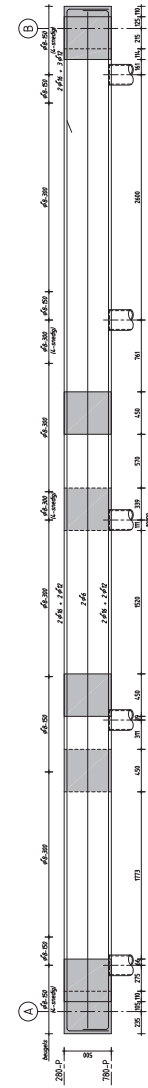
Drsn 1 Balk F07



Drsn Balk F08

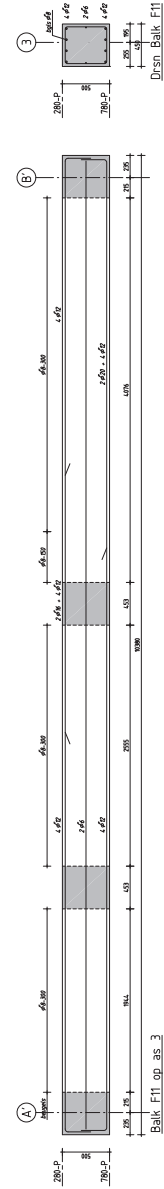


Drsn Balk F09

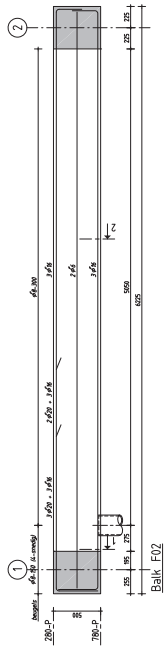


Drsn 2 Balk F10

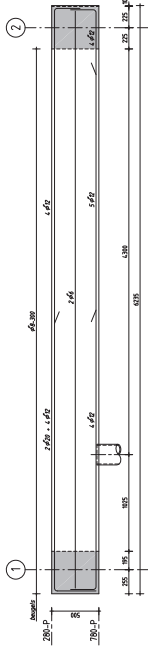
op afzonderlijke bega



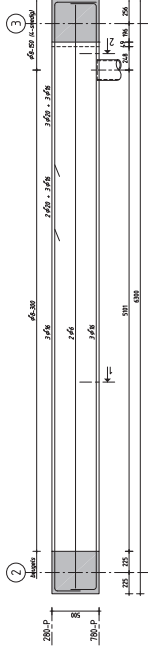
Drsn Balk F11



Drsn 1 Balk F02



Drsn Balk F04



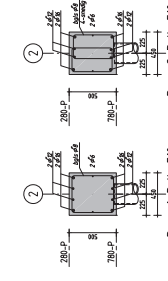
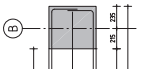
Drsn 1 Balk F06



Drsn 2 Balk F07

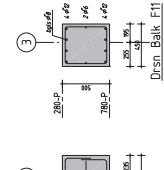


Drsn Balk F09

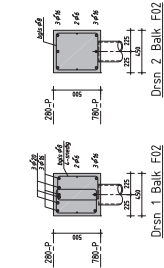


Drsn 2 Balk F10

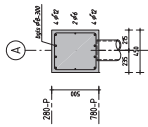
op afzonderlijke bega



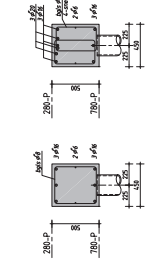
Drsn Balk F11



Drsn 1 Balk F02



Drsn Balk F04



Drsn 2 Balk F06

uitvoering betonconstructies volgens NEN 6722 + NEN-EN 206-1	
betonwafel	: CDV25 milieulasse XC2
betonstaal	: B500A, gebroed hardstaal, ook voor de beugels
deling	: B500A, bouwstaalreinen
ligging staven	: 30° max
lasterlaag	: 50 x diameter staaf
verhuur	: dik 50 mm, tenzij anders vermeld
maaktvoering	: in het werk te controleren

DEFINITIEF

Project Naam	8628	W02
Plaats	8628	W02
Opdrachtgever	Funderingsbalken woning W1 + W2	
Ontwerper	JTB Architecten	
Beoordelaar	VAN DE MEERENDONK BV	
Beoordelaar	INDUSTRIEL-CONSTRUCT	
Beoordelaar	POSTBUS 372 3200 AJ	
Beoordelaar	TEL 0411 631038	
Beoordelaar	EMAIL info@mearendonk.nl	