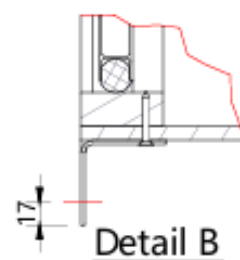


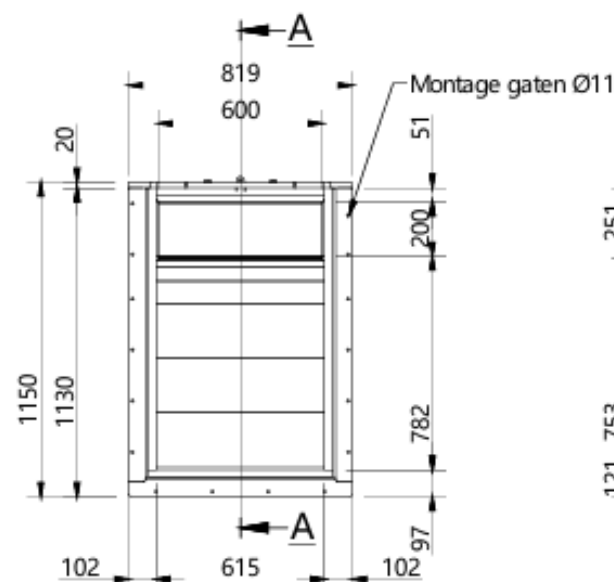
Bovenaanzicht



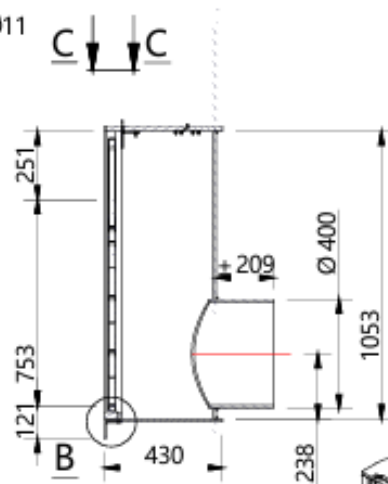
Doorsnede C-C



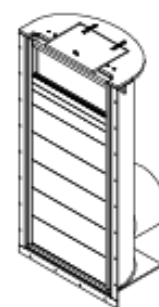
Detail B



Vooraanzicht



Doorsnede A-A

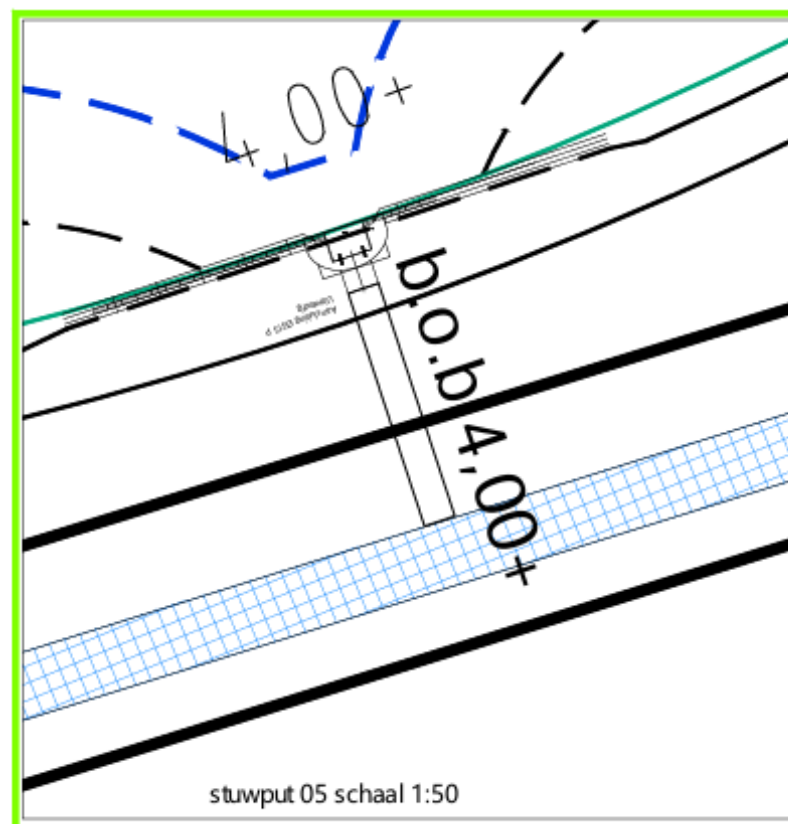
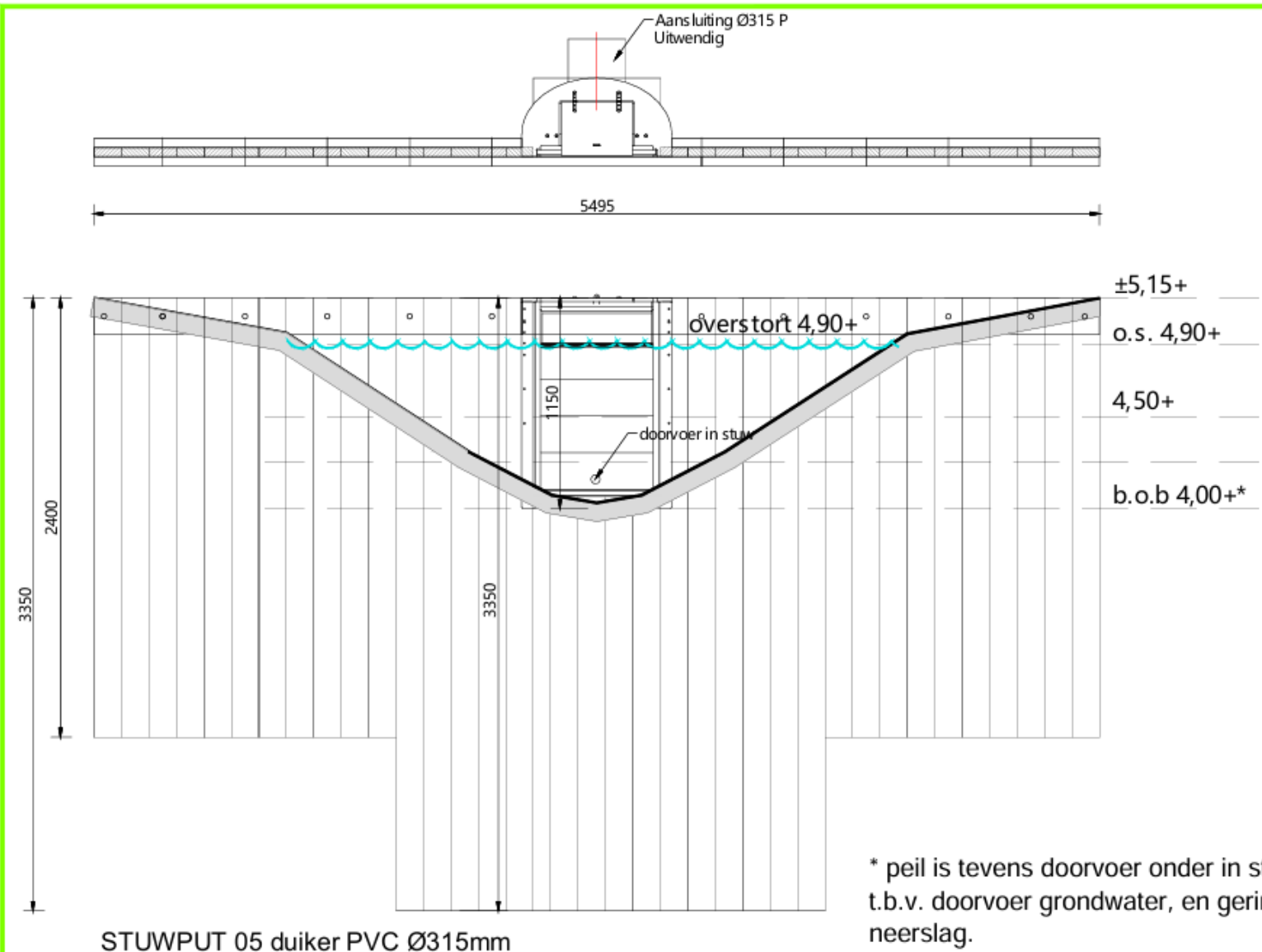


- Materiaal ;
- Alle stalen onderdelen zijn AISI 304 (L), tenzij anders aangegeven.
 - Alle bevestigingsmiddelen zijn AISI 316 (A4).
 - Alle kunststof onderdelen zijn HDPE, tenzij anders aangegeven.
 - EPDM afdichtrubber en MS-polymer afdichtkit.

Totaal 59 kg

Company	KWT Waterbeheersing B.V.			The design and technical information appearing on this drawing is the property of the KWT Holding and is disclosed in confidence. It is not to be copied, reproduced, revealed, or appropriated by others, either in whole or in part, without prior access written consent from the KWT Holding.			
Project company	KWT overstorten						
Project KWT	KWT overstortput type KOP						
Description	KOP 600x1200x200x400P						
 <div>Wentploeg 42 8256 SN Biddinghuizen The Netherlands</div> <div>Tel. : +31 (0)321 33 55 66 Fax : +31 (0)321 33 55 76 E-mail : info@kwtgroup.nl Internet : http://www.kwtgroup.nl</div> <div>Member of  Bergsc henhoek group</div>				Designed by	RD	Date	20-4-2010
				Checked by		Date	
				Sheet / size	1 / 1	A4	Measurements in mm Maatvoering in mm
				Projection		Revision	
				Drawing nr.		312Y06001500N0QP	

Principe Stuwput 05



953388-C1
Detail stuwput 05